

CALIFORNIA REGIONAL WATER QUALITY CONTROL BOARD
CENTRAL VALLEY REGION

MONITORING AND REPORTING PROGRAM NO. R5-2005-0067
FOR
COUNTY OF FRESNO
FOR
CONSTRUCTION AND OPERATION
AMERICAN AVENUE MUNICIPAL SOLID WASTE LANDFILL
FRESNO COUNTY

Compliance with this Monitoring and Reporting Program, with Title 27, California Code of Regulations, Section 20005, et seq. (hereafter Title 27), and with the *Standard Provisions and Reporting Requirements for Waste Discharge Requirements for Nonhazardous Solid Waste Discharges Regulated by Title 27 and/or Subtitle D (27 CCR §20005 et seq. and 40 CFR 258)*, dated April 2000, is ordered by Waste Discharge Requirements Order No. R5-2005-0067.

A. **REQUIRED MONITORING REPORTS**

<u>Report</u>	<u>Due</u>
1. Groundwater Monitoring (Section D.1)	See Table I
2. Annual Monitoring Summary Report (Section E.5.)	Annually
3. Unsaturated Zone Monitoring (Section D.2)	See Table II
4. Leachate Monitoring (Section D.3)	See Table III
5. Facility Monitoring (Section D.4)	As necessary
6. Response to a Release (Standard Provisions and Reporting Requirements)	As necessary

B. **REPORTING**

The Discharger shall report monitoring data and information as required in this Monitoring and Reporting Program and as required in Order No. R5-2005-0067 and the Standard Provisions and Reporting Requirements. Reports which do not comply with the required format will be **REJECTED** and the Discharger shall be deemed to be in noncompliance with the waste discharge requirements. In reporting the monitoring data required by this program, the Discharger shall arrange the data in tabular form so that the

MONITORING AND REPORTING PROGRAM NO. R5-2005-0067
COUNTY OF FRESNO
FOR CONSTRUCTION AND OPERATION
AMERICAN AVENUE MUNICIPAL SOLID WASTE LANDFILL
FRESNO COUNTY

-2-

date, the constituents, the concentrations, and the units are readily discernible. The data shall be summarized in such a manner so as to illustrate clearly the compliance with waste discharge requirements or the lack thereof. Data shall also be submitted in a digital format acceptable to the Executive Officer.

Each monitoring report shall include a compliance evaluation summary as specified in E. Reporting Requirements, of this Monitoring and Reporting Program.

Field and laboratory tests shall be reported in each monitoring report. Monthly, quarterly, semiannual, and annual monitoring reports shall be submitted to the Regional Board in accordance with the following schedule for the calendar period in which samples were taken or observations made.

<u>Sampling Frequency</u>	<u>Reporting Frequency</u>	<u>Reporting Periods End</u>	<u>Report Date Due</u>
Monthly	Quarterly	Last Day of Month	by Quarterly Schedule
Quarterly	Quarterly	31 March 30 June 30 September 31 December	31 May 31 August 30 November 28 February
Semiannually	Semiannually	30 June 31 December	31 August 28 February
Annually	Annually	31 December	28 February
Pentannually	Pentannually	31 December	28 February*

*Years ending in 20x8 or 20x3

The Discharger shall submit an **Annual Monitoring Summary Report** to the Regional Board covering the previous monitoring year. The annual report shall contain the information specified in E. Reporting Requirements, of this Monitoring and Reporting Program, and a discussion of compliance with the waste discharge requirements and the Water Quality Protection Standard.

The results of **all monitoring** conducted at the site shall reported to the Regional Board in accordance with the reporting schedule above for the calendar period in which samples were taken or observations made.

C. WATER QUALITY PROTECTION STANDARD AND COMPLIANCE PERIOD

1. Water Quality Protection Standard Report

For each waste management unit (Unit), the Water Quality Protection Standard shall consist of all constituents of concern, the concentration limit for each constituent of concern, the point of compliance, and all water quality monitoring points.

The Water Quality Protection Standard for naturally occurring waste constituents consists of the constituents of concern, the concentration limits, and the point of compliance and all monitoring points. The Executive Officer shall review and approve the Water Quality Protection Standard, or any modification thereto, for each monitored medium.

The report shall:

- a. Identify **all distinct bodies of surface and ground water** that could be affected in the event of a release from a Unit or portion of a Unit. This list shall include at least the uppermost aquifer and any permanent or ephemeral zones of perched groundwater underlying the facility.
- b. Include a map showing the monitoring points and background monitoring points for the surface water monitoring program, groundwater monitoring program, and the unsaturated zone monitoring program. The map shall include the point of compliance in accordance with §20405 of Title 27.
- c. Evaluate the perennial direction(s) of groundwater movement within the uppermost groundwater zone(s).

If subsequent sampling of the background monitoring point(s) indicates significant water quality changes due to either seasonal fluctuations or other reasons unrelated to waste management activities at the site, the Discharger may request modification of the Water Quality Protection Standard.

2. Constituents of Concern

The constituents of concern include all the waste constituents, their reaction products, and hazardous constituents that are reasonably expected to be in or derived from waste contained in the Unit. The constituents of concern for all Units at the facility are those listed in Tables I through III for the specified monitored medium, and Table V. The Discharger shall monitor all constituents of

concern every five years, or more frequently as required in accordance with a Corrective Action Program.

a. Monitoring Parameters

Monitoring parameters are constituents of concern that are the waste constituents, reaction products, hazardous constituents, and physical parameters that provide a reliable indication of a release from a Unit. The monitoring parameters for all Units are those listed in Tables I through IV for the specified monitored medium.

3. Concentration Limits

For a naturally occurring constituent of concern, the concentration limit for each constituent of concern shall be determined as follows:

- a. By calculation in accordance with a statistical method pursuant to §20415 of Title 27; or
- b. By an alternate statistical method acceptable to the Executive Officer in accordance with §20415 of Title 27.

4. Point of Compliance

The point of compliance for the water standard at each Unit is a vertical surface located at the hydraulically downgradient limit of the Unit that extends through the uppermost aquifer underlying the Unit.

5. Compliance Period

The compliance period for each Unit shall be the number of years equal to the active life of the Unit plus the closure period. The compliance period is the minimum period during which the Discharger shall conduct a water quality monitoring program subsequent to a release from the Unit. The compliance period shall begin anew each time the Discharger initiates an evaluation monitoring program.

D. MONITORING

The Discharger shall comply with the detection monitoring program provisions of Title 27 for groundwater and the unsaturated zone, in accordance with Detection Monitoring Specification E.1 and E.3 of Waste Discharge Requirements, Order No. R5-2005-0067. Detection monitoring for a new facility or a new Unit shall be

installed, operational, and one year of monitoring data collected **prior to** the discharge of wastes. All monitoring shall be conducted in accordance with a Sample Collection and Analysis Plan, which includes quality assurance/quality control standards, that is acceptable to the Executive Officer.

All point of compliance monitoring wells established for the detection monitoring program shall constitute the monitoring points for the groundwater Water Quality Protection Standard. All detection monitoring program groundwater monitoring wells, unsaturated zone monitoring devices, leachate, and surface water monitoring points shall be sampled and analyzed for monitoring parameters and constituents of concern as indicated and listed in Tables I through III.

Method detection limits and practical quantitation limits shall be reported. All peaks shall be reported, including those which cannot be quantified and/or specifically identified. Metals shall be analyzed in accordance with the methods listed in Table V.

The Discharger may, with the approval of the Executive Officer, use alternative analytical test methods, including new USEPA approved methods, provided the methods have method detection limits equal to or lower than the analytical methods specified in this Monitoring and Reporting Program.

1. Groundwater

The Discharger shall operate and maintain a groundwater detection monitoring system that complies with the applicable provisions of §20415 and §20420 of Title 27 in accordance with a Detection Monitoring Program approved by the Executive Officer. The Discharger shall collect, preserve, and transport groundwater samples in accordance with the approved Sample Collection and Analysis Plan.

The Discharger shall determine the groundwater flow rate and direction in the uppermost aquifer and in any zones of perched water and in any additional zone of saturation monitored pursuant to this Monitoring and Reporting Program, and report the results semiannually, including the times of highest and lowest elevations of the water levels in the wells.

Hydrographs of each well shall be submitted showing the elevation of groundwater with respect to the elevations of the top and bottom of the screened interval and the elevation of the pump intake. Hydrographs of each well shall be prepared quarterly and submitted annually.

Groundwater samples shall be collected from the point-of-compliance wells, background wells, and any additional wells added as part of the approved groundwater monitoring system. Samples shall be collected and analyzed for the monitoring parameters in accordance with the methods and frequency specified in Table I.

The monitoring parameters shall also be evaluated each reporting period with regards to the cation/anion balance, and the results shall be graphically presented using a Stiff diagram, a Piper graph, or a Schueller plot. Samples for the constituents of concern specified in Table I shall be collected and analyzed in accordance with the methods listed in Table V every five years.

2. Unsaturated Zone Monitoring

The Discharger shall operate and maintain an unsaturated zone detection monitoring system that complies with the applicable provisions of §20415 and §20420 of Title 27 in accordance with a detection monitoring plan approved by the Executive Officer. The Discharger shall collect, preserve, and transport samples in accordance with the quality assurance/quality control standards contained in the approved Sample Collection and Analysis Plan.

Unsaturated zone samples shall be collected from the monitoring devices and background monitoring devices of the approved unsaturated zone monitoring system. The collected samples shall be analyzed for the listed constituents in accordance with the methods and frequency specified in Table II. All monitoring parameters shall be graphed so as to show historical trends at each monitoring point. Samples for the constituents of concern specified in Table II shall be collected and analyzed in accordance with the methods listed in Table V every five years.

The pan lysimeters shall be checked monthly for liquid and monitoring shall also include the total volume of liquid removed from the system. Unsaturated zone monitoring reports shall be included with the corresponding semiannual groundwater monitoring and shall include an evaluation of potential impacts of the facility on the unsaturated zone and compliance with the Water Quality Protection Standard.

3. Leachate Monitoring

All Unit leachate collection and removal system sumps shall be inspected monthly for leachate generation. Upon detection of leachate in a previously dry leachate collection and removal system, leachate shall be sampled **immediately** and analyzed for the constituents listed in Table III. Leachate shall then be sampled

and analyzed annually during the fourth quarter thereafter, with a retest during the following second quarter if constituents are detected that have not been previously detected. Leachate samples shall be collected and analyzed for the listed constituents in accordance with the methods and frequency specified in Table III. The constituents of concern list shall include all constituents listed in Table V. The quantity of leachate pumped from each sump shall be measured and reported monthly as Leachate Flow Rate (in gallons).

Leachate that seeps to the surface from the Unit shall be sampled and analyzed for the constituents listed in Table III upon detection. The quantity of leachate shall be *estimated* and reported as Leachate Flow Rate (in gallons/day).

4. Facility Monitoring

a. Facility Inspection

Annually, prior to the anticipated rainy season, but no later than **30 September**, the Discharger shall conduct an inspection of the facility. The inspection shall assess damage to the drainage control system, groundwater monitoring equipment (including wells, etc.), and shall include the Standard Observations contained in section E.3.f. of this Monitoring and Reporting Program. Any necessary construction, maintenance, or repairs shall be completed by **31 October**. By **15 November** of each year, the Discharger shall submit an annual report describing the results of the inspection and the repair measures implemented, including photographs of the problem and the repairs.

b. Storm Events

The Discharger shall inspect all precipitation, diversion, and drainage facilities for damage **within 7 days** following *major storm events*. Necessary repairs shall be completed **within 30 days** of the inspection. The Discharger shall report any damage and subsequent repairs within 45 days of completion of the repairs, including photographs of the problem and the repairs.

E. REPORTING REQUIREMENTS

1. The Discharger shall retain records of all monitoring information, including all calibration and maintenance records, all original strip chart recordings of continuous monitoring instrumentation, copies of all reports required by this Order, and records of all

MONITORING AND REPORTING PROGRAM NO. R5-2005-0067
COUNTY OF FRESNO
FOR CONSTRUCTION AND OPERATION
AMERICAN AVENUE MUNICIPAL SOLID WASTE LANDFILL
FRESNO COUNTY

-8-

data used to complete the application for this Order. Records shall be maintained throughout the life of the facility including the postclosure period.

Such legible records shall show the following for each sample:

- a. Sample identification and the monitoring point or background monitoring point from which it was taken, along with the identity of the individual who obtained the sample;
 - b. Date, time, and manner of sampling;
 - c. Date and time that analyses were started and completed, and the name of the personnel and laboratory performing each analysis;
 - d. Complete procedure used, including method of preserving the sample, and the identity and volumes of reagents used;
 - e. Calculation of results; and
 - f. Results of analyses, and the MDL and PQL for each analysis.
2. A transmittal letter explaining the essential points shall accompany each report. At a minimum, the transmittal letter shall identify any violations found since the last report was submitted, and if the violations were corrected. If no violations have occurred since the last submittal, this shall be stated in the transmittal letter. The transmittal letter shall also state that a discussion of any violations found since the last report was submitted, and a description of the actions taken or planned for correcting those violations, including any references to previously submitted time schedules, is contained in the accompanying report.
3. Each monitoring report shall include a compliance evaluation summary. The summary shall contain at least:
- a. For each monitoring point and background monitoring point addressed by the report, a description of:
 - 1) The time of water level measurement;
 - 2) The type of pump - or other device - used for purging and the elevation of the pump intake relative to the elevation of the screened interval;
 - 3) The method of purging (the pumping rate; the equipment and methods used to monitor field pH, temperature, and conductivity during purging; the calibration of the field equipment; results of the pH, temperature, conductivity, and turbidity testing; and the method of disposing of the purge water) to remove all portions of the water that was in the well bore while the sample was being taken;

- 4) The type of pump - or other device - used for sampling, if different than the pump or device used for purging; and
 - 5) A statement that the sampling procedure was conducted in accordance with the approved Sampling and Analysis Plan.
- b. A map or aerial photograph showing the locations of observation stations, monitoring points, and background monitoring points.
 - c. For each groundwater body, a description and graphical presentation of the gradient and direction of groundwater flow under/around the Unit, and the groundwater flow rate, based upon water level elevations taken prior to the collection of the water quality data submitted in the report.
 - d. Laboratory statements of results of all analyses evaluating compliance with requirements.
 - e. An evaluation of the effectiveness of the leachate monitoring and control facilities, and of the run-off/run-on control facilities.
 - f. A summary and certification of completion of all **Standard Observations** for the Unit(s), for the perimeter of the Unit, and for the receiving waters. The Standard Observations shall include:
 - 1) For the Unit:
 - a) Evidence of ponded water at any point on the facility (show affected area on map);
 - b) Evidence of odors - presence or absence, characterization, source, and distance of travel from source; and
 - c) Evidence of erosion and/or of day-lighted refuse.
 - 2) Along the perimeter of the Unit:
 - a) Evidence of liquid leaving or entering the Unit, estimated size of affected area, and flow rate (show affected area on map);
 - b) Evidence of odors - presence or absence, characterization, source, and distance of travel from source; and
 - c) Evidence of erosion and/or of day-lighted refuse.

- g. The quantity and types of wastes discharged and the locations in the Unit where waste has been placed since submittal of the last such report.
4. The Discharger shall report by telephone any seepage from the disposal area **immediately** after it is discovered. A written report shall be filed with the Regional Board **within seven days**, containing at least the following information:
- a. A map showing the location(s) of seepage;
 - b. An estimate of the flow rate;
 - c. A description of the nature of the discharge (e.g., all pertinent observations and analyses);
 - d. Verification that samples have been submitted for analyses of the Constituents of Concern and Monitoring Parameters, and an estimated date that the results will be submitted to the Regional Board; and
 - e. Corrective measures underway or proposed, and corresponding time schedule.
5. The Discharger shall submit an **Annual Monitoring Summary Report** to the Regional Board covering the reporting period of the previous monitoring year. This report shall contain:
- a. All monitoring parameters and constituents of concern shall be graphed so as to show historical trends at each monitoring point and background monitoring point, for all samples taken within at least the previous five calendar years. Each such graph shall plot the concentration of one or more constituents for the period of record for a given monitoring point or background monitoring point, at a scale appropriate to show trends or variations in water quality. The graphs shall plot each datum, rather than plotting mean values. For any given constituent or parameter, the scale for background plots shall be the same as that used to plot downgradient data. Graphical analysis of monitoring data may be used to provide significant evidence of a release.
 - b. Unless otherwise exempted by the Executive Officer, all monitoring analytical data obtained during the previous two six-month reporting periods, shall be submitted in tabular form as well as in a digital file format acceptable to the Executive Officer. The Regional Board regards the submittal of data in hard copy and in digital format as "...the form necessary for..." statistical analysis [Title 27 CCR Section 20420(h)], in that this facilitates periodic review by the Regional Board.
 - c. A comprehensive discussion of the compliance record, and the result of any corrective actions taken or planned which may be needed to bring the Discharger into full compliance with the waste discharge requirements.

MONITORING AND REPORTING PROGRAM NO. R5-2005-0067
COUNTY OF FRESNO
FOR CONSTRUCTION AND OPERATION
AMERICAN AVENUE MUNICIPAL SOLID WASTE LANDFILL
FRESNO COUNTY

-11-

- d. A map showing the area and elevations in which filling has been completed during the previous calendar year and a comparison to final closure design contours.
- e. A written summary of the monitoring results, indicating any changes made or observed since the previous annual report.
- f. An evaluation of the effectiveness of the leachate monitoring/control facilities.

The Discharger shall implement the above monitoring program on the effective date of this Program.

Ordered by: Thomas R Pinkos
THOMAS R. PINKOS, Executive Officer

29 April 2005

(Date)

DEE:dee/rac

TABLE I
GROUNDWATER DETECTION MONITORING PROGRAM

<u>Parameter</u>	<u>Units</u>	<u>Frequency</u>
Field Parameters		
Groundwater Elevation	Ft. & hundredths, M.S.L.	Quarterly
Temperature	°C	Semiannual
Electrical Conductivity	µmhos/cm	Semiannual
pH	pH units	Semiannual
Turbidity	Turbidity units	Semiannual
Monitoring Parameters		
Total Dissolved Solids (TDS)	mg/L	Semiannual
Chloride	mg/L	Semiannual
Carbonate	mg/L	Semiannual
Bicarbonate	mg/L	Semiannual
Nitrate - Nitrogen	mg/L	Semiannual
Sulfate	mg/L	Semiannual
Calcium	mg/L	Semiannual
Magnesium	mg/L	Semiannual
Potassium	mg/L	Semiannual
Sodium	mg/L	Semiannual
Volatile Organic Compounds (USEPA Method 8260, see Table IV)	µg/L	Semiannual
Constituents of Concern (see Table V)		
Total Organic Carbon	mg/L	5 years
Inorganics (dissolved)	mg/L	5 years
Volatile Organic Compounds (USEPA Method 8260B, extended list)	µg/L	5 years
Semi-Volatile Organic Compounds (USEPA Method 8270C)	µg/L	5 years
Chlorophenoxy Herbicides (USEPA Method 8151A)	µg/L	5 years
Organophosphorus Compounds (USEPA Method 8141A)	µg/L	5 years

TABLE II

UNSATURATED ZONE DETECTION MONITORING PROGRAM

PAN LYSIMETERS (or other vadose zone monitoring device)

<u>Parameter</u>	<u>Units</u>	<u>Frequency</u>
Field Parameters		
Electrical Conductivity	µmhos/cm	Semiannual
pH	pH units	Semiannual
Monitoring Parameters		
Total Dissolved Solids (TDS)	mg/L	Semiannual
Chloride	mg/L	Semiannual
Carbonate	mg/L	Semiannual
Bicarbonate	mg/L	Semiannual
Nitrate - Nitrogen	mg/L	Semiannual
Sulfate	mg/L	Semiannual
Calcium	mg/L	Semiannual
Magnesium	mg/L	Semiannual
Potassium	mg/L	Semiannual
Sodium	mg/L	Semiannual
Volatile Organic Compounds (USEPA Method 8260B, see Table IV)	µg/L	Semiannual
Constituents of Concern (see Table V)		
Total Organic Carbon	mg/L	5 years
Inorganics (dissolved)	mg/L	5 years
Volatile Organic Compounds (USEPA Method 8260B, extended list)	µg/L	5 years
Semi-Volatile Organic Compounds (USEPA Method 8270C)	µg/L	5 years
Chlorophenoxy Herbicides (USEPA Method 8151A)	µg/L	5 years
Organophosphorus Compounds (USEPA Method 8141A)	µg/L	5 years

TABLE III
LEACHATE DETECTION MONITORING PROGRAM

<u>Parameter</u>	<u>Units</u>	<u>Frequency</u>
Field Parameters		
Total Flow	Gallons	Monthly
Flow Rate	Gallons/Day	Monthly
Electrical Conductivity	µmhos/cm	Monthly
pH	pH units	Monthly
Monitoring Parameters		
Total Dissolved Solids (TDS)	mg/L	Annually
Chloride	mg/L	Annually
Carbonate	mg/L	Annually
Bicarbonate	mg/L	Annually
Nitrate - Nitrogen	mg/L	Annually
Sulfate	mg/L	Annually
Calcium	mg/L	Annually
Magnesium	mg/L	Annually
Potassium	mg/L	Annually
Sodium	mg/L	Annually
Volatile Organic Compounds (USEPA Method 8260B, see Table IV)	µg/L	Annually
Constituents of Concern (see Table V)		
Total Organic Carbon	mg/L	5 years
Inorganics (dissolved)	mg/L	5 years
Volatile Organic Compounds (USEPA Method 8260B, extended list)	µg/L	5 years
Semi-Volatile Organic Compounds (USEPA Method 8270C)	µg/L	5 years
Chlorophenoxy Herbicides (USEPA Method 8151A)	µg/L	5 years
Organophosphorus Compounds (USEPA Method 8141A)	µg/L	5 years

TABLE IV

MONITORING PARAMETERS FOR DETECTION MONITORING

Surrogates for Metallic Constituents:

pH
Total Dissolved Solids
Electrical Conductivity
Chloride
Sulfate
Nitrate nitrogen

Constituents included in VOC:

USEPA Method 8260B

Acetone
Acrylonitrile
Benzene
Bromochloromethane
Bromodichloromethane
Bromoform (Tribromomethane)
Carbon disulfide
Carbon tetrachloride
Chlorobenzene
Chloroethane (Ethyl chloride)
Chloroform (Trichloromethane)
Dibromochloromethane (Chlorodibromomethane)
1,2-Dibromo-3-chloropropane (DBCP)
1,2-Dibromoethane (Ethylene dibromide; EDB)
o-Dichlorobenzene (1,2-Dichlorobenzene)
m-Dichlorobenzene (1,3-Dichlorobenzene)
p-Dichlorobenzene (1,4-Dichlorobenzene)
trans-1,4-Dichloro-2-butene
Dichlorodifluoromethane (CFC-12)
1,1-Dichloroethane (Ethylidene chloride)
1,2-Dichloroethane (Ethylene dichloride)
1,1 -Dichloroethylene (1,1 -Dichloroethene; Vinylidene chloride)
cis-1,2-Dichloroethylene (cis-1,2-Dichloroethene)
trans-1,2-Dichloroethylene (trans-1,2-Dichloroethene)
1,2-Dichloropropane (Propylene dichloride)
cis-1,3-Dichloropropene
trans-1,3-Dichloropropene
Di-isopropylether (DIPE)
Ethanol
Ethyltertiary butyl ether
Ethylbenzene
2-Hexanone (Methyl butyl ketone)
Hexachlorobutadiene

TABLE IV

MONITORING PARAMETERS FOR DETECTION MONITORING

Continued

Hexachloroethane
Methyl bromide (Bromomethene)
Methyl chloride (Chloromethane)
Methylene bromide (Dibromomethane)
Methylene chloride (Dichloromethane)
Methyl ethyl ketone (MEK: 2-Butanone)
Methyl iodide (Iodomethane)
Methyl t-butyl ether
4-Methyl-2-pentanone (Methyl isobutylketone)
Naphthalene
Styrene
Tertiary amyl methyl ether
Tertiary butyl alcohol
1,1,1,2-Tetrachloroethane
1,1,2,2-Tetrachloroethane
Tetrachloroethylene (Tetrachloroethene; Perchloroethylene)
Toluene
1,2,4-Trichlorobenzene
1,1,1-Trichloroethane (Methylchloroform)
1,1,2-Trichloroethane
Trichloroethylene (Trichloroethene)
Trichlorofluoromethane (CFC- 11)
1,2,3-Trichloropropane
Vinyl acetate
Vinyl chloride
Xylenes

MONITORING AND REPORTING PROGRAM NO. R5-2005-0067
COUNTY OF FRESNO
FOR CONSTRUCTION AND OPERATION
AMERICAN AVENUE MUNICIPAL SOLID WASTE LANDFILL
FRESNO COUNTY

-17-

TABLE V

CONSTITUENTS OF CONCERN & APPROVED USEPA ANALYTICAL METHODS

Inorganics (dissolved):

USEPA Method

Aluminum	6010
Antimony	7041
Barium	6010
Beryllium	6010
Cadmium	7131A
Chromium	6010
Cobalt	6010
Copper	6010
Silver	6010
Tin	6010
Vanadium	6010
Zinc	6010
Iron	6010
Manganese	6010
Arsenic	7062
Lead	7421
Mercury	7470A
Nickel	7521
Selenium	7742
Thallium	7841
Cyanide	9010B
Sulfide	9030B

Volatile Organic Compounds:

USEPA Method 8260

Acetone
Acetonitrile (Methyl cyanide)
Acrolein
Acrylonitrile
Allyl chloride (3-Chloropropene)
Benzene
Bromochloromethane (Chlorobromomethane)
Bromodichloromethane (Dibromochloromethane)
Bromoform (Tribromomethane)
Carbon disulfide
Carbon tetrachloride
Chlorobenzene
Chloroethane (Ethyl chloride)
Chloroform (Trichloromethane)
Chloroprene
Dibromochloromethane (Chlorodibromomethane)

TABLE V

CONSTITUENTS OF CONCERN & APPROVED USEPA ANALYTICAL METHODS

Continued

1,2-Dibromo-3-chloropropane (DBCP)
1,2-Dibromoethane (Ethylene dibromide; EDB)
o-Dichlorobenzene (1,2-Dichlorobenzene)
m-Dichlorobenzene (1,3-Dichlorobenzene)
p-Dichlorobenzene (1,4-Dichlorobenzene)
trans- 1,4-Dichloro-2-butene
Dichlorodifluoromethane (CFC 12)
1,1 -Dichloroethane (Ethylidene chloride)
1,2-Dichloroethane (Ethylene dichloride)
1,1 -Dichloroethylene (1, 1-Dichloroethene; Vinylidene chloride)
cis- 1,2-Dichloroethylene (cis- 1,2-Dichloroethene)
trans- 1,2-Dichloroethylene (trans- 1,2-Dichloroethene)
1,2-Dichloropropane (Propylene dichloride)
1,3-Dichloropropane (Trimethylene dichloride)
2,2-Dichloropropane (Isopropylidene chloride)
1,1 -Dichloropropene
cis- 1,3-Dichloropropene
trans- 1,3-Dichloropropene
Di-isopropylether (DIPE)
Ethanol
Ethyltertiary butyl ether
Ethylbenzene
Ethyl methacrylate
Hexachlorobutadiene
Hexachloroethane
2-Hexanone (Methyl butyl ketone)
Isobutyl alcohol
Methacrylonitrile
Methyl bromide (Bromomethane)
Methyl chloride (Chloromethane)
Methyl ethyl ketone (MEK; 2-Butanone)
Methyl iodide (Iodomethane)
Methyl t-butyl ether
Methyl methacrylate
4-Methyl-2-pentanone (Methyl isobutyl ketone)
Methylene bromide (Dibromomethane)
Methylene chloride (Dichloromethane)
Naphthalene
Propionitrile (Ethyl cyanide)
Styrene
Tertiary amyl methyl ether
Tertiary butyl alcohol
1,1,1,2-Tetrachloroethane
1,1,2,2-Tetrachloroethane

TABLE V

CONSTITUENTS OF CONCERN & APPROVED USEPA ANALYTICAL METHODS

Continued

Tetrachloroethylene (Tetrachloroethene; Perchloroethylene; PCE)
Toluene
1,2,4-Trichlorobenzene
1,1,1 -Trichloroethane, Methylchloroform
1,1,2-Trichloroethane
Trichloroethylene (Trichloroethene; TCE)
Trichlorofluoromethane (CFC- 11)
1,2,3-Trichloropropane
Vinyl acetate
Vinyl chloride (Chloroethene)
Xylene (total)

Semi-Volatile Organic Compounds:

USEPA Method 8270 - base, neutral, & acid extractables

Acenaphthene
Acenaphthylene
Acetophenone
2-Acetylaminofluorene (2-AAF)
Aldrin
4-Aminobiphenyl
Anthracene
Benzo[a]anthracene (Benzanthracene)
Benzo[b]fluoranthene
Benzo[k]fluoranthene
Benzo[g,h,i]perylene
Benzo[a]pyrene
Benzyl alcohol
Bis(2-ethylhexyl) phthalate
alpha-BHC
beta-BHC
delta-BHC
gamma-BHC (Lindane)
Bis(2-chloroethoxy)methane
Bis(2-chloroethyl) ether (Dichloroethyl ether)
Bis(2-chloro-1-methylethyl) ether (Bis(2-chloroisopropyl) ether; DCIP)
4-Bromophenyl phenyl ether
Butyl benzyl phthalate (Benzyl butyl phthalate)
Chlordane
p-Chloroaniline
Chlorobenzilate
p-Chloro-m-cresol (4-Chloro-3-methylphenol)
2-Chloronaphthalene

TABLE V

CONSTITUENTS OF CONCERN & APPROVED USEPA ANALYTICAL METHODS

Continued

2-Chlorophenol
4-Chlorophenyl phenyl ether
Chrysene
o-Cresol (2-methylphenol)
m-Cresol (3-methylphenol)
p-Cresol (4-methylphenol)
4,4'-DDD
4,4'-DDE
4,4'-DDT
Diallate
Dibenz[a,h]anthracene
Dibenzofuran
Di-n-butyl phthalate
3,3'-Dichlorobenzidine
2,4-Dichlorophenol
2,6-Dichlorophenol
Dieldrin
Diethyl phthalate
p-(Dimethylamino)azobenzene
7,12-Dimethylbenz[a]anthracene
3,3'-Dimethylbenzidine
2,4-Dimethylphenol (m-Xylenol)
Dimethyl phthalate
m-Dinitrobenzene
4,6-Dinitro-o-cresol (4,6-Dinitro-2-methylphenol)
2,4-Dinitrophenol
2,4-Dinitrotoluene
2,6-Dinitrotoluene
Di-n-octyl phthalate
Diphenylamine
Endosulfan I
Endosulfan II
Endosulfan sulfate
Endrin
Endrin aldehyde
Ethyl methanesulfonate
Famphur
Fluoranthene
Fluorene
Heptachlor
Heptachlor epoxide
Hexachlorobenzene
Hexachlorocyclopentadiene
Hexachloropropene

TABLE V

CONSTITUENTS OF CONCERN & APPROVED USEPA ANALYTICAL METHODS

Continued

Indeno(1,2,3-c,d)pyrene
Isodrin
Isophorone
Isosafrole
Kepone
Methapyrilene
Methoxychlor
3-Methylcholanthrene
Methyl methanesulfonate
2-Methylnaphthalene
1,4-Naphthoquinone
1-Naphthylamine
2-Naphthylamine
o-Nitroaniline (2-Nitroaniline)
m-Nitroaniline (3-Nitroaniline)
p-Nitroaniline (4-Nitroaniline)
Nitrobenzene
o-Nitrophenol (2-Nitrophenol)
p-Nitrophenol (4-Nitrophenol)
N-Nitrosodi-n-butylamine (Di-n-butylnitrosamine)
N-Nitrosodiethylamine (Diethylnitrosamine)
N-Nitrosodimethylamine (Dimethylnitrosamine)
N-Nitrosodiphenylamine (Diphenylnitrosamine)
N-Nitrosodipropylamine (N-Nitroso-N-dipropylamine; Di-n-propylnitrosamine)
N-Nitrosomethylethylamine (Methylethylnitrosamine)
N-Nitrosopiperidine
N-Nitrosopyrrolidine
5-Nitro-o-toluidine
Pentachlorobenzene
Pentachloronitrobenzene (PCNB)
Pentachlorophenol
Phenacetin
Phenanthrene
Phenol
p-Phenylenediamine
Polychlorinated biphenyls (PCBs; Aroclors)
Pronamide
Pyrene
Safrole
1,2,4,5-Tetrachlorobenzene
2,3,4,6-Tetrachlorophenol
o-Toluidine
Toxaphene

TABLE V

CONSTITUENTS OF CONCERN & APPROVED USEPA ANALYTICAL METHODS

Continued

sym-Trinitrobenzene
2,4,5-Trichlorophenol
0,0,0-Triethyl phosphorothioate

Chlorophenoxy Herbicides:

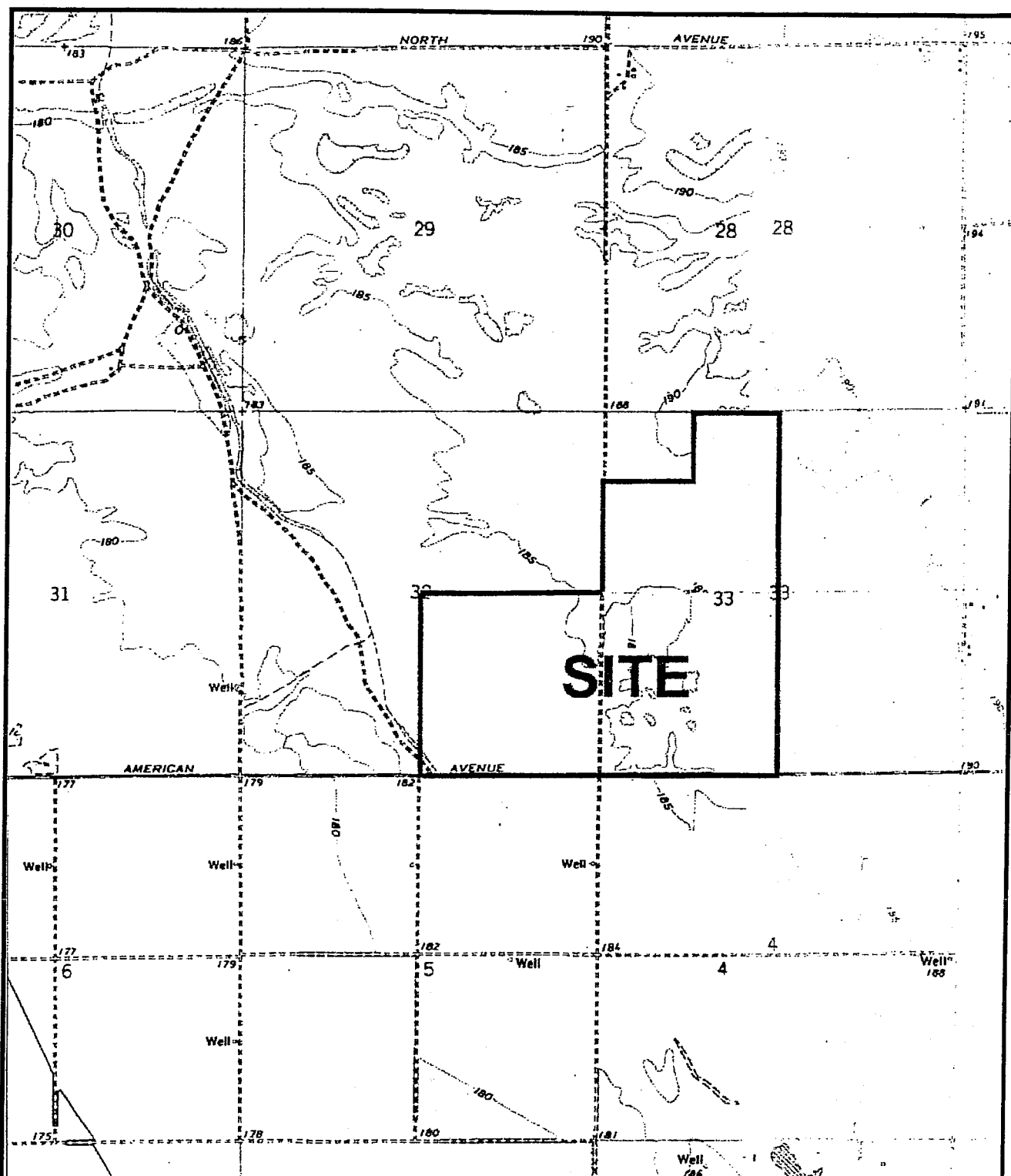
USEPA Method 8151A

2,4-D (2,4-Dichlorophenoxyacetic acid)
Dinoseb (DNBP; 2-sec-Butyl-4,6-dinitrophenol)
Silvex (2,4,5-Trichlorophenoxypropionic acid; 2,4,5-TP)
2,4,5-T (2,4,5-Trichlorophenoxyacetic acid)

Organophosphorus Compounds:

USEPA Method 8141A

Atrazine
Chlorpyrifos
0,0-Diethyl 0-2-pyrazinyl phosphorothioate (Thionazin)
Diazinon
Dimethoate
Disulfoton
Ethion
Methyl parathion (Parathion methyl)
Parathion
Phorate
Simazine



ATTACHMENT A

ORDER NO. R5-2005-0067
WASTE DISCHARGE REQUIREMENTS
FOR COUNTY OF FRESNO
AMERICAN AVENUE MUNICIPAL SOLID WASTE LANDFILL
FRESNO COUNTY



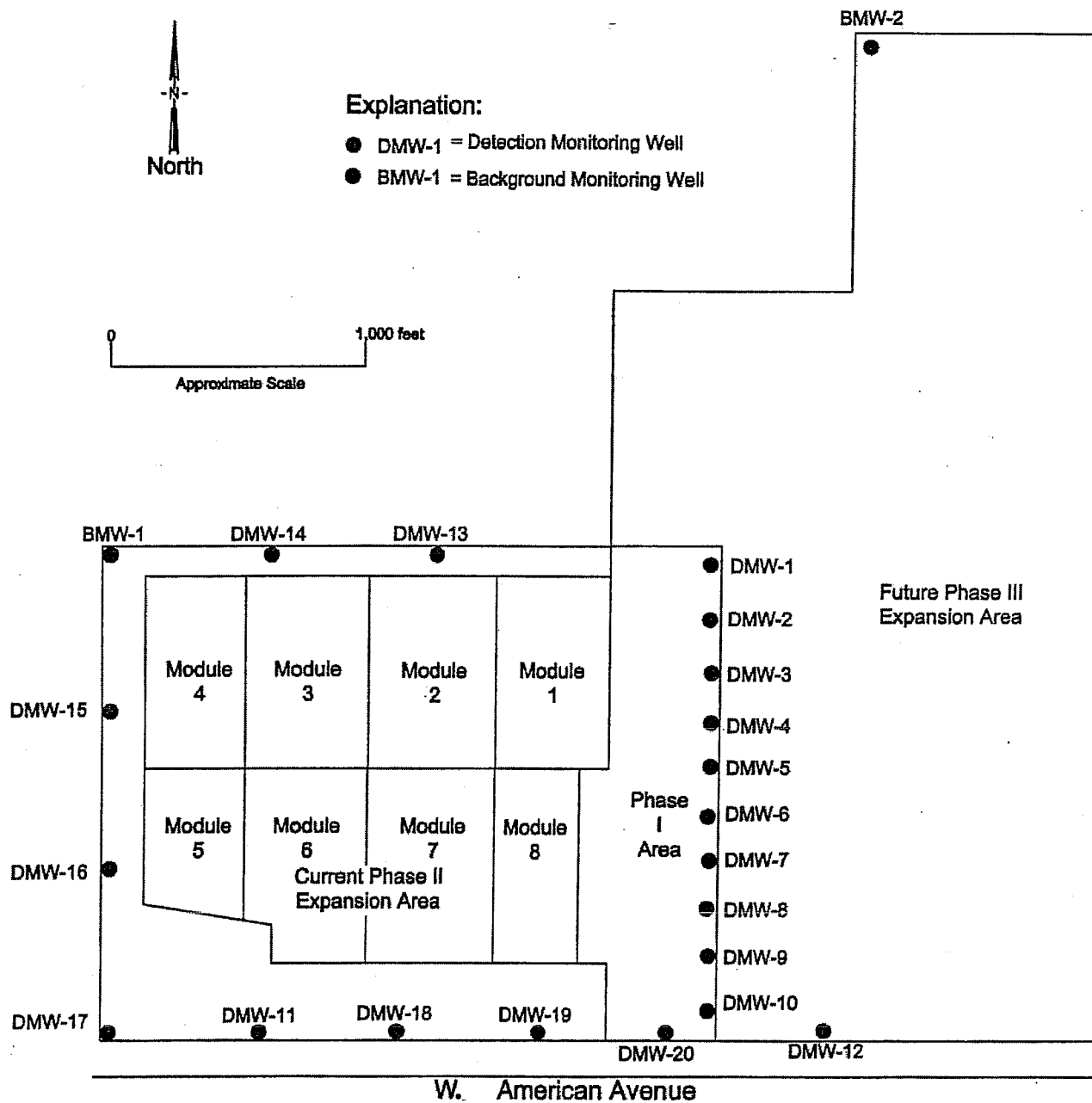
Approximate Scale: 1" = 2,200'

Sections 32 and 33, T14S, R17E, MDB&M



Explanation:

- DMW-1 = Detection Monitoring Well
- BMW-1 = Background Monitoring Well



ATTACHMENT B

ORDER NO. R5-2005-0067
WASTE DISCHARGE REQUIREMENTS
FOR COUNTY OF FRESNO
AMERICAN AVENUE MUNICIPAL SOLID WASTE LANDFILL
FRESNO COUNTY

INFORMATION SHEET

ORDER NO. R5-2005-0067
WASTE DISCHARGE REQUIREMENTS
COUNTY OF FRESNO
FOR OPERATION AND CONSTRUCTION
AMERICAN AVENUE MUNICIPAL SOLID WASTE LANDFILL
FRESNO COUNTY

The County of Fresno (hereafter Discharger) owns and operates a municipal solid waste landfill approximately five miles southwest of the City of Kerman. The 440-acre waste management facility consists of an unlined waste management unit covering 30 acres (Phase I) and a 160-acre composite-lined waste management unit (Phase II). The Discharger proposes to expand the waste management facility by constructing Phase III (250 acres) upon completion of Phase II.

The facility is situated in a topographically flat region of the San Joaquin Valley. Soils underlying the site are interbedded sands, silty-sands, sandy-silts, and silts. In-situ soil permeabilities are reported to be in the range of 1×10^{-3} and 1×10^{-5} cm/s. Groundwater is found below 100 feet in depth. The groundwater gradient in the area of the site is about 2.5 feet in 1,000 feet toward the southeast. The quality of underlying groundwater is highly variable with electrical conductivity ranging from 350 to 940 umhos/cm.

The Discharger proposes to clean-close the existing inactive unlined waste management unit (Phase II) by excavating and sorting solid waste from soils within the unlined cell, as a means of mitigating known landfill releases and to provide additional soil needs for landfill operations. Finer materials that pass through a screening process will be used as daily cover material on the landfill's active face. Objects that do not pass the screening process will be discharged into a composite-lined landfill cell. Excavation of the unlined unit will continue until the entire unlined waste cell is removed. The Discharger proposes to begin constructing a composite liner system in the place of the former unlined waste management unit once the unlined unit has been clean-closed, which will be contiguous with existing Phase II and proposed Phase III.

The Discharger submitted a landfill liner design performance report for the proposed Phase III waste management unit to demonstrate that the proposed engineered alternative design would meet the performance standard contained in Section 20310(c) of Title 27 for a Class III landfill. The demonstration utilized a model to predict the performance of the proposed liner design and the fate and transport of a release of waste constituents from Phase III. To ensure proper installation of the engineered alternative landfill liner system, the Discharger has agreed to perform an electronic leak detection survey (ELDS) over the entire base of the liner system subsequent to placement of the operations layer on the liner and leachate collection and removal system to detect and repair any liner defects prior to placing waste. In addition to performing the ELDS, the County will place select waste over the operations layer to reduce the potential damage to the base liner during initial refuse filling operations. Based on the results of the model showing that the engineered alternative liner design would contain the wastes discharged to the Unit, and the design and construction features of the engineered alternative liner system, the Regional Board finds that the engineered alternative liner meets the performance standard contained in Title 27. The Discharger has also demonstrated that the proposed liner system meets the approval criteria set forth in Section 20080(b) of Title 27 for engineered alternative designs.

COUNTY OF FRESNO
FOR CONSTRUCTION AND OPERATION
AMERICAN AVENUE MUNICIPAL SOLID WASTE LANDFILL
FRESNO COUNTY

The Discharger proposes to accept treated wood waste at the American Avenue Landfill. Existing law regulates the control of hazardous waste, but exempts from the hazardous waste control laws, wood waste that is exempt from regulation under the federal Resource Conservation and Recovery Act of 1976, as amended (RCRA), if the wood waste is disposed of in a municipal landfill that meets certain requirements imposed pursuant to the Porter-Cologne Water Quality Control Act for the classification of disposal sites, and the landfill meets other specified requirements outlined in Sections 25143.1.5, 25150.7, and 25150.8 of the Health and Safety Code. The Discharger has indicated that all treated wood waste accepted at the American Avenue Landfill will be handled and disposed of in accordance with the provisions outlined in Sections 25143.1.5, 25150.7, and 25150.8 of the Health and Safety Code. The American Avenue Landfill appears to meet the necessary requirements imposed pursuant to the Porter-Cologne Water Quality Control Act. This order therefore allows the disposal of treated wood waste in accordance with the conditions imposed pursuant to the Health and Safety Code.

Groundwater quality is monitored by 15 monitoring wells located near the facility's point of compliance. This order requires the installation of additional monitoring wells to bring the existing groundwater monitoring system into compliance with Title 27 regulations as the construction of proposed Phase III progresses.

Volatile organic compounds were first detected in groundwater when the detection monitoring wells were installed and continue to be detected sporadically in the detection monitoring wells at concentrations below primary water quality standards. The Discharger is currently conducting evaluation monitoring in accordance with Cleanup and Abatement Order No. 98-702. However, the final evaluation monitoring report has not been submitted to date. This order rescinds Order No. 98-702 and requires timely completion of the evaluation monitoring program and implementation of a feasibility study for corrective action.

The action to update WDRs for this facility is exempt from the provisions of the California Environmental Quality Act (Public Resources Code, Section 21000, et seq.), in accordance with 14 CCR, Section 15301.

DEE:dee/rac:4/29/2005

CALIFORNIA REGIONAL WATER QUALITY CONTROL BOARD
CENTRAL VALLEY REGION

MONITORING AND REPORTING PROGRAM NO. 5-00-233

FOR
COUNTY OF FRESNO
AND
CHEVRON USA, INC.

FOR
OPERATION
COALINGA SOLID WASTE DISPOSAL SITE
FRESNO COUNTY

Compliance with this Monitoring and Reporting Program, with Title 27, California Code of Regulations, Section 20005, et seq. (hereafter Title 27), and with the *Standard Provisions and Reporting Requirements for Waste Discharge Requirements for Nonhazardous Solid Waste Discharges Regulated by Title 27 and/or Subtitle D (27 CCR §20005 et seq. and 40 CFR 258)*, dated April 2000, is ordered by Waste Discharge Requirements Order No. 5-00-233.

A. REQUIRED MONITORING REPORTS

<u>Report</u>	<u>Due</u>
1. Groundwater Monitoring (Section D.1)	See Table I
2. Annual Monitoring Summary Report (Order No. 5-00-233, F.6.)	Annually
3. Unsaturated Zone Monitoring (Section D.2)	See Table II
4. Leachate Monitoring (Section D.3)	See Table III
5. Facility Monitoring (Section D.4)	As necessary
6. Response to a Release (Standard Provisions and Reporting Requirements)	As necessary

B. REPORTING

The Discharger shall report monitoring data and information as required in this Monitoring and Reporting Program and as required in Order No. 5-00-233 and the Standard Provisions and Reporting Requirements. Reports which do not comply with the

MONITORING AND REPORTING PROGRAM NO. 5-00-233
COUNTY OF FRESNO AND
CHEVRON USA, INC.
FOR OPERATION
COALINGA SOLID WASTE DISPOSAL SITE
FRESNO COUNTY

2

required format will be **REJECTED** and the Discharger shall be deemed to be in noncompliance with the waste discharge requirements. In reporting the monitoring data required by this program, the Discharger shall arrange the data in tabular form so that the date, the constituents, the concentrations, and the units are readily discernible. The data shall be summarized in such a manner so as to illustrate clearly the compliance with waste discharge requirements or the lack thereof. Data shall also be submitted in a digital format acceptable to the Executive Officer.

Each monitoring report shall include a compliance evaluation summary as specified in F. Reporting Requirements, of Order No. 5-00-233.

Field and laboratory tests shall be reported in each monitoring report. Monthly, quarterly, semiannual, and annual monitoring reports shall be submitted to the Board in accordance with the following schedule for the calendar period in which samples were taken or observations made.

<u>Sampling Frequency</u>	<u>Reporting Frequency</u>	<u>Reporting Periods End</u>	<u>Report Date Due</u>
Monthly	Quarterly	Last Day of Month	by Semiannual Schedule
Quarterly	Quarterly	31 March 30 June 30 September 31 December	31 May 30 August 30 November 28 February
Semiannually	Semiannually	30 June 31 December	30 August 28 February
Annually	Annually	31 December	28 February

The Discharger shall submit an **Annual Monitoring Summary Report** to the Board covering the previous monitoring year. The annual report shall contain the information specified in F. Reporting Requirements, of Order No. 5-00-233, and a discussion of compliance with the waste discharge requirements and the Water Quality Protection Standard.

The results of **all monitoring** conducted at the site shall be reported to the Board in accordance with the reporting schedule above for the calendar period in which samples were taken or observations made.

C. WATER QUALITY PROTECTION STANDARD AND COMPLIANCE PERIOD

1. Water Quality Protection Standard Report

For each waste management unit (Unit), the Water Quality Protection Standard shall consist of all constituents of concern, the concentration limit for each constituent of concern, the point of compliance, and all water quality monitoring points.

The Water Quality Protection Standard for naturally occurring waste constituents consists of the constituents of concern, the concentration limits, and the point of compliance and all monitoring points. The Executive Officer shall review and approve the Water Quality Protection Standard, or any modification thereto, for each monitored medium.

The report shall:

- a. Identify **all distinct bodies of surface and ground water** that could be affected in the event of a release from a Unit or portion of a Unit. This list shall include at least the uppermost aquifer and any permanent or ephemeral zones of perched groundwater underlying the facility.
- b. Include a map showing the monitoring points and background monitoring points for the surface water monitoring program, groundwater monitoring program, and the unsaturated zone monitoring program. The map shall include the point of compliance in accordance with §20405 of Title 27.
- c. Evaluate the perennial direction(s) of groundwater movement within the uppermost groundwater zone(s).

If subsequent sampling of the background monitoring point(s) indicates significant water quality changes due to either seasonal fluctuations or other reasons unrelated to waste management activities at the site, the Discharger may request modification of the Water Quality Protection Standard.

2. Constituents of Concern

The constituents of concern include all the waste constituents, their reaction products, and hazardous constituents that are reasonably expected to be in or derived from waste contained in the Unit. The constituents of concern for all Units at the facility are those listed in Tables I through III for the specified monitored medium, and Table V. The Discharger shall monitor all constituents of

concern every five years, or more frequently as required in accordance with a Corrective Action Program.

a. Monitoring Parameters

Monitoring parameters are constituents of concern that are the waste constituents, reaction products, hazardous constituents, and physical parameters that provide a reliable indication of a release from a Unit. The monitoring parameters for all Units are those listed in Tables I through IV for the specified monitored medium.

3. Concentration Limits

For a naturally occurring constituent of concern, the concentration limit for each constituent of concern shall be determined as follows:

- a. By calculation in accordance with a statistical method pursuant to §20415 of Title 27; or
- b. By an alternate statistical method acceptable to the Executive Officer in accordance with §20415 of Title 27.

4. Point of Compliance

The point of compliance for the water standard at each Unit is a vertical surface located at the hydraulically downgradient limit of the Unit that extends through the uppermost aquifer underlying the Unit.

5. Compliance Period

The compliance period for each Unit shall be the number of years equal to the active life of the Unit plus the closure period. The compliance period is the minimum period during which the Discharger shall conduct a water quality monitoring program subsequent to a release from the Unit. The compliance period shall begin anew each time the Discharger initiates an evaluation monitoring program.

D. MONITORING

The Discharger shall comply with the detection monitoring program provisions of Title 27 for groundwater, surface water, and the unsaturated zone, in accordance with Detection Monitoring Specification E.2 and E.4 of Waste Discharge Requirements, Order No. 5-00-233. All monitoring shall be conducted in accordance with a Sample Collection and Analysis Plan, which includes quality assurance/quality control standards, that is acceptable to the Executive Officer.

All point of compliance monitoring wells established for the detection monitoring program shall constitute the monitoring points for the groundwater Water Quality Protection Standard. All detection monitoring program groundwater monitoring wells, unsaturated zone monitoring devices, leachate, and surface water monitoring points shall be sampled and analyzed for monitoring parameters and constituents of concern as indicated and listed in Tables I through III.

Method detection limits and practical quantitation limits shall be reported. All peaks shall be reported, including those which cannot be quantified and/or specifically identified. Metals shall be analyzed in accordance with the methods listed in Table V.

The Discharger may, with the approval of the Executive Officer, use alternative analytical test methods, including new USEPA approved methods, provided the methods have method detection limits equal to or lower than the analytical methods specified in this Monitoring and Reporting Program.

1. Groundwater

The Discharger shall install and operate a groundwater detection monitoring system that complies with the applicable provisions of §20415 and §20420 of Title 27 in accordance with a Detection Monitoring Program approved by the Executive Officer. The Discharger shall collect, preserve, and transport groundwater samples in accordance with the approved Sample Collection and Analysis Plan.

The Discharger shall determine the groundwater flow rate and direction in the uppermost aquifer and in any zones of perched water and in any additional zone of saturation monitored pursuant to this Monitoring and Reporting Program, and report the results semiannually, including the times of highest and lowest elevations of the water levels in the wells.

Hydrographs of each well shall be submitted showing the elevation of groundwater with respect to the elevations of the top and bottom of the screened

interval and the elevation of the pump intake. Hydrographs of each well shall be prepared quarterly and submitted annually.

Groundwater samples shall be collected from the point-of-compliance wells, background wells, and any additional wells added as part of the approved groundwater monitoring system. Samples shall be collected and analyzed for the monitoring parameters in accordance with the methods and frequency specified in Table I.

The monitoring parameters shall also be evaluated each reporting period with regards to the cation/anion balance, and the results shall be graphically presented using a Stiff diagram, a Piper graph, or a Schueller plot. Samples for the constituents of concern specified in Table I shall be collected and analyzed in accordance with the methods listed in Table V every five years.

2. Unsaturated Zone Monitoring

The Discharger shall install and operate an unsaturated zone detection monitoring system that complies with the applicable provisions of §20415 and §20420 of Title 27 in accordance with a detection monitoring plan approved by the Executive Officer. The Discharger shall collect, preserve, and transport samples in accordance with the quality assurance/quality control standards contained in the approved Sample Collection and Analysis Plan.

Unsaturated zone samples shall be collected from the monitoring devices and background monitoring devices of the approved unsaturated zone monitoring system. The collected samples shall be analyzed for the listed constituents in accordance with the methods and frequency specified in Table II. All monitoring parameters shall be graphed so as to show historical trends at each monitoring point. Samples for the constituents of concern specified in Table II shall be collected and analyzed in accordance with the methods listed in Table V every five years.

3. Leachate Monitoring

Leachate which seeps to the surface from the Unit shall be sampled and analyzed for the constituents listed in Table III upon detection. The quantity of leachate shall be *estimated* and reported as Leachate Flow Rate (in gallons/day).

4. Facility Monitoring

a. Facility Inspection

Annually, prior to the anticipated rainy season, but no later than **30 September**, the Discharger shall conduct an inspection of the facility. The inspection shall assess damage to the drainage control system, groundwater monitoring equipment (including wells, etc.), and shall include the Standard Observations contained in section F.4.f. of Order No. 5-00-233. Any necessary construction, maintenance, or repairs shall be completed by **31 October**. By **15 November** of each year, the Discharger shall submit an annual report describing the results of the inspection and the repair measures implemented, including photographs of the problem and the repairs.

b. Storm Events

The Discharger shall inspect all precipitation, diversion, and drainage facilities for damage **within 7 days** following *major storm events*. Necessary repairs shall be completed **within 30 days** of the inspection. The Discharger shall report any damage and subsequent repairs within 45 days of completion of the repairs, including photographs of the problem and the repairs.

The Discharger shall implement the above monitoring program on the effective date of this Program.

Ordered by: Thomas R. Pinter
for GARY M. CARLTON, Executive Officer

27 October 2000
(Date)

CLR:clr/rac

TABLE I
GROUNDWATER DETECTION MONITORING PROGRAM

<u>Parameter</u>	<u>Units</u>	<u>Frequency</u>
Field Parameters		
Groundwater Elevation	Ft. & hundredths, M.S.L.	Quarterly
Temperature	°C	Semiannual
Electrical Conductivity	µmhos/cm	Semiannual
pH	pH units	Semiannual
Turbidity	Turbidity units	Semiannual
Monitoring Parameters		
Total Dissolved Solids (TDS)	mg/L	Semiannual
Chloride	mg/L	Semiannual
Carbonate	mg/L	Semiannual
Bicarbonate	mg/L	Semiannual
Nitrate - Nitrogen	mg/L	Semiannual
Sulfate	mg/L	Semiannual
Calcium	mg/L	Semiannual
Magnesium	mg/L	Semiannual
Potassium	mg/L	Semiannual
Sodium	mg/L	Semiannual
Volatile Organic Compounds (USEPA Method 8260, see Table IV)	µg/L	Semiannual
Constituents of Concern (see Table V)		
Total Organic Carbon	mg/L	5 years
Inorganics (dissolved)	mg/L	5 years
Volatile Organic Compounds (USEPA Method 8260, extended list)	µg/L	5 years
Semi-Volatile Organic Compounds (USEPA Method 8270)	µg/L	5 years
Chlorophenoxy Herbicides (USEPA Method 8150)	µg/L	5 years
Organophosphorus Compounds (USEPA Method 8141)	µg/L	5 years

TABLE II
UNSATURATED ZONE DETECTION MONITORING PROGRAM

SOIL-PORE GAS

<u>Parameter</u>	<u>Units</u>	<u>Frequency</u>
Monitoring Parameters		
Volatile Organic Compounds (USEPA Method TO-14)	µg/cm ³	Semiannual
Methane	%	Semiannual

PAN LYSIMETERS (or other vadose zone monitoring device)

<u>Parameter</u>	<u>Units</u>	<u>Frequency</u>
Field Parameters		
Electrical Conductivity	µmhos/cm	Semiannual
pH	pH units	Semiannual

Monitoring Parameters

Total Dissolved Solids (TDS)	mg/L	Semiannual
Chloride	mg/L	Semiannual
Carbonate	mg/L	Semiannual
Bicarbonate	mg/L	Semiannual
Nitrate - Nitrogen	mg/L	Semiannual
Sulfate	mg/L	Semiannual
Calcium	mg/L	Semiannual
Magnesium	mg/L	Semiannual
Potassium	mg/L	Semiannual
Sodium	mg/L	Semiannual
Volatile Organic Compounds (USEPA Method 8260, see Table IV)	µg/L	Semiannual

Constituents of Concern (see Table V)

Total Organic Carbon	mg/L	5 years
Inorganics (dissolved)	mg/L	5 years
Volatile Organic Compounds (USEPA Method 8260, extended list)	µg/L	5 years

TABLE II
UNSATURATED ZONE DETECTION MONITORING PROGRAM

Continued

<u>Parameter</u>	<u>Units</u>	<u>Frequency</u>
Semi-Volatile Organic Compounds (USEPA Method 8270)	µg/L	5 years
Chlorophenoxy Herbicides (USEPA Method 8150)	µg/L	5 years
Organophosphorus Compounds (USEPA Method 8141)	µg/L	5 years

TABLE III
LEACHATE DETECTION MONITORING PROGRAM

<u>Parameter</u>	<u>Units</u>	<u>Frequency</u>
Field Parameters		
Total Flow	Gallons	Monthly
Flow Rate	Gallons/Day	Monthly
Electrical Conductivity	µmhos/cm	Monthly
pH	pH units	Monthly
Monitoring Parameters		
Total Dissolved Solids (TDS)	mg/L	Annually
Chloride	mg/L	Annually
Carbonate	mg/L	Annually
Bicarbonate	mg/L	Annually
Nitrate - Nitrogen	mg/L	Annually
Sulfate	mg/L	Annually
Calcium	mg/L	Annually
Magnesium	mg/L	Annually
Potassium	mg/L	Annually
Sodium	mg/L	Annually
Volatile Organic Compounds (USEPA Method 8260, see Table IV)	µg/L	Annually
Constituents of Concern (see Table V)		
Total Organic Carbon	mg/L	5 years
Inorganics (dissolved)	mg/L	5 years
Volatile Organic Compounds (USEPA Method 8260, extended list)	µg/L	5 years
Semi-Volatile Organic Compounds (USEPA Method 8270)	µg/L	5 years
Chlorophenoxy Herbicides (USEPA Method 8150)	µg/L	5 years
Organophosphorus Compounds (USEPA Method 8141)	µg/L	5 years

TABLE IV

MONITORING PARAMETERS FOR DETECTION MONITORING

Surrogates for Metallic Constituents:

pH
Total Dissolved Solids
Electrical Conductivity
Chloride
Sulfate
Nitrate nitrogen

Constituents included in VOC:

USEPA Method 8260

Acetone
Acrylonitrile
Benzene
Bromochloromethane
Bromodichloromethane
Bromoform (Tribromomethane)
Carbon disulfide
Carbon tetrachloride
Chlorobenzene
Chloroethane (Ethyl chloride)
Chloroform (Trichloromethane)
Dibromochloromethane (Chlorodibromomethane)
1,2-Dibromo-3-chloropropane (DBCP)
1,2-Dibromoethane (Ethylene dibromide; EDB)
o-Dichlorobenzene (1,2-Dichlorobenzene)
p-Dichlorobenzene (1,4-Dichlorobenzene)
trans-1,4-Dichloro-2-butene
1,1-Dichloroethane (Ethylidene chloride)
1,2-Dichloroethane (Ethylene dichloride)
1,1-Dichloroethylene (1,1-Dichloroethene; Vinylidene chloride)
cis-1,2-Dichloroethylene (cis-1,2-Dichloroethene)
trans-1,2-Dichloroethylene (trans-1,2-Dichloroethene)
1,2-Dichloropropane (Propylene dichloride)
cis-1,3-Dichloropropene
trans-1,3-Dichloropropene
Ethylbenzene
2-Hexanone (Methyl butyl ketone)
Methyl bromide (Bromomethane)

TABLE IV
MONITORING PARAMETERS FOR DETECTION MONITORING
Continued

Methyl chloride (Chloromethane)
Methylene bromide (Dibromomethane)
Methylene chloride (Dichloromethane)
Methyl ethyl ketone (MEK: 2-Butanone)
Methyl iodide (Iodomethane)
4-Methyl-2-pentanone (Methyl isobutylketone)
Styrene
1,1,1,2-Tetrachloroethane
1,1,2,2-Tetrachloroethane
Tetrachloroethylene (Tetrachloroethene; Perchloroethylene)
Toluene
1,1,1-Trichloroethane (Methylchloroform)
1,1,2-Trichloroethane
Trichloroethylene (Trichloroethene)
Trichlorofluoromethane (CFC- 11)
1,2,3-Trichloropropane
Vinyl acetate
Vinyl chloride
Xylenes

47

TABLE V
CONSTITUENTS OF CONCERN & APPROVED USEPA ANALYTICAL METHODS

<u>Inorganics:</u>	<u>USEPA Method</u>
Aluminum	6010
Antimony	6010
Barium	6010
Beryllium	6010
Cadmium	6010
Chromium	6010
Cobalt	6010
Copper	6010
Silver	6010
Tin	6010
Vanadium	6010
Zinc	6010
Iron	6010
Manganese	6010
Arsenic	7062
Lead	7421
Mercury	7470
Nickel	7520
Selenium	7742
Thallium	7841
Cyanide	9010
Sulfide	9030

Volatile Organic Compounds:

USEPA Method 8260

Acetone
Acetonitrile (Methyl cyanide)
Acrolein
Acrylonitrile
Allyl chloride (3-Chloropropene)
Benzene
Bromochloromethane (Chlorobromomethane)
Bromodichloromethane (Dibromochloromethane)
Bromoform (Tribromomethane)
Carbon disulfide
Carbon tetrachloride
Chlorobenzene
Chloroethane (Ethyl chloride)
Chloroform (Trichloromethane)
Chloroprene

TABLE V

CONSTITUENTS OF CONCERN & APPROVED USEPA ANALYTICAL METHODS

Continued

Dibromochloromethane (Chlorodibromomethane)
1,2-Dibromo-3-chloropropane (DBCP)
1,2-Dibromoethane (Ethylene dibromide; EDB)
o-Dichlorobenzene (1,2-Dichlorobenzene)
m-Dichlorobenzene (1,3-Dichlorobenzene)
p-Dichlorobenzene (1,4-Dichlorobenzene)
trans- 1,4-Dichloro-2-butene
Dichlorodifluoromethane (CFC 12)
1,1 -Dichloroethane (Ethylidene chloride)
1,2-Dichloroethane (Ethylene dichloride)
1,1 -Dichloroethylene (1, 1-Dichloroethene; Vinylidene chloride)
cis- 1,2-Dichloroethylene (cis- 1,2-Dichloroethene)
trans- 1,2-Dichloroethylene (trans- 1,2-Dichloroethene)
1,2-Dichloropropane (Propylene dichloride)
1,3-Dichloropropane (Trimethylene dichloride)
2,2-Dichloropropane (Isopropylidene chloride)
1,1 -Dichloropropene
cis- 1,3-Dichloropropene
trans- 1,3-Dichloropropene
Ethylbenzene
Ethyl methacrylate
Hexachlorobutadiene
2-Hexanone (Methyl butyl ketone)
Isobutyl alcohol
Methacrylonitrile
Methyl bromide (Bromomethane)
Methyl chloride (Chloromethane)
Methyl ethyl ketone (MEK; 2-Butanone)
Methyl iodide (Iodomethane)
Methyl methacrylate
4-Methyl-2-pentanone (Methyl isobutyl ketone)
Methylene bromide (Dibromomethane)
Methylene chloride (Dichloromethane)
Naphthalene
Propionitrile (Ethyl cyanide)
Styrene
1,1,1,2-Tetrachloroethane
1,1,2,2-Tetrachloroethane
Tetrachloroethylene (Tetrachloroethene; Perchloroethylene; PCE)
Toluene
1,2,4-Trichlorobenzene
1,1,1 -Trichloroethane, Methylchloroform

42

TABLE V

CONSTITUENTS OF CONCERN & APPROVED USEPA ANALYTICAL METHODS

Continued

1,1,2-Trichloroethane
Trichloroethylene (Trichloroethene; TCE)
Trichlorofluoromethane (CFC- 11)
1,2,3-Trichloropropane
Vinyl acetate
Vinyl chloride (Chloroethene)
Xylene (total)

Semi-Volatile Organic Compounds:

USEPA Method 8270 - base, neutral, & acid extractables

Acenaphthene
Acenaphthylene
Acetophenone
2-Acetylaminofluorene (2-AAF)
Aldrin
4-Aminobiphenyl
Anthracene
Benzo[a]anthracene (Benzanthracene)
Benzo[b]fluoranthene
Benzo[k]fluoranthene
Benzo[g,h,i]perylene
Benzo[a]pyrene
Benzyl alcohol
Bis(2-ethylhexyl) phthalate
alpha-BHC
beta-BHC
delta-BHC
gamma-BHC (Lindane)
Bis(2-chloroethoxy)methane
Bis(2-chloroethyl) ether (Dichloroethyl ether)
Bis(2-chloro-1-methylethyl) ether (Bis(2-chloroisopropyl) ether; DCIP)
4-Bromophenyl phenyl ether
Butyl benzyl phthalate (Benzyl butyl phthalate)
Chlordane
p-Chloroaniline
Chlorobenzilate
p-Chloro-m-cresol (4-Chloro-3-methylphenol)
2-Chloronaphthalene
2-Chlorophenol
4-Chlorophenyl phenyl ether
Chrysene
o-Cresol (2-methylphenol)

TABLE V
CONSTITUENTS OF CONCERN & APPROVED USEPA ANALYTICAL METHODS

Continued

m-Cresol (3-methylphenol)
p-Cresol (4-methylphenol)
4,4'-DDD
4,4'-DDE
4,4'-DDT
Diallate
Dibenz[a,h]anthracene
Dibenzofuran
Di-n-butyl phthalate
o-Dichlorobenzene (1,2-Dichlorobenzene)
m-Dichlorobenzene (1,3-Dichlorobenzene)
p-Dichlorobenzene (1,4-Dichlorobenzene)
3,3'-Dichlorobenzidine
2,4-Dichlorophenol
2,6-Dichlorophenol
Dieldrin
Diethyl phthalate
p-(Dimethylamino)azobenzene
7,12-Dimethylbenz[a]anthracene
3,3'-Dimethylbenzidine
2,4-Dimethylphenol (m-Xylenol)
Dimethyl phthalate
m-Dinitrobenzene
4,6-Dinitro-o-cresol (4,6-Dinitro-2-methylphenol)
2,4-Dinitrophenol
2,4-Dinitrotoluene
2,6-Dinitrotoluene
Di-n-octyl phthalate
Diphenylamine
Endosulfan I
Endosulfan II
Endosulfan sulfate
Endrin
Endrin aldehyde
Ethyl methanesulfonate
Famphur
Fluoranthene
Fluorene
Heptachlor
Heptachlor epoxide
Hexachlorobenzene
Hexachlorobutadiene

TABLE V

CONSTITUENTS OF CONCERN & APPROVED USEPA ANALYTICAL METHODS

Continued

Hexachlorocyclopentadiene
Hexachloroethane
Hexachloropropene
Indeno(1,2,3-c,d)pyrene
Isodrin
Isophorone
Isosafrole
Kepone
Methapyrilene
Methoxychlor
3-Methylcholanthrene
Methyl methanesulfonate
2-Methylnaphthalene
Naphthalene
1,4-Naphthoquinone
1-Naphthylamine
2-Naphthylamine
o-Nitroaniline (2-Nitroaniline)
m-Nitroaniline (3-Nitroaniline)
p-Nitroaniline (4-Nitroaniline)
Nitrobenzene
o-Nitrophenol (2-Nitrophenol)
p-Nitrophenol (4-Nitrophenol)
N-Nitrosodi-n-butylamine (Di-n-butylnitrosamine)
N-Nitrosodiethylamine (Diethylnitrosamine)
N-Nitrosodimethylamine (Dimethylnitrosamine)
N-Nitrosodiphenylamine (Diphenylnitrosamine)
N-Nitrosodipropylamine (N-Nitroso-N-dipropylamine; Di-n-propylnitrosamine)
N-Nitrosomethylethylamine (Methylethylnitrosamine)
N-Nitrosopiperidine
N-Nitrosopyrrolidine
5-Nitro-o-toluidine
Pentachlorobenzene
Pentachloronitrobenzene (PCNB)
Pentachlorophenol
Phenacetin
Phenanthrene
Phenol
p-Phenylenediamine
Polychlorinated biphenyls (PCBs; Aroclors)
Pronamide

TABLE V

CONSTITUENTS OF CONCERN & APPROVED USEPA ANALYTICAL METHODS

Continued

Pyrene
Safrole
1,2,4,5-Tetrachlorobenzene
2,3,4,6-Tetrachlorophenol
o-Toluidine
Toxaphene
1,2,4-Trichlorobenzene
2,4,5-Trichlorophenol
2,4,6-Trichlorophenol
0,0,0-Triethyl phosphorothioate
sym-Trinitrobenzene

Chlorophenoxy Herbicides:

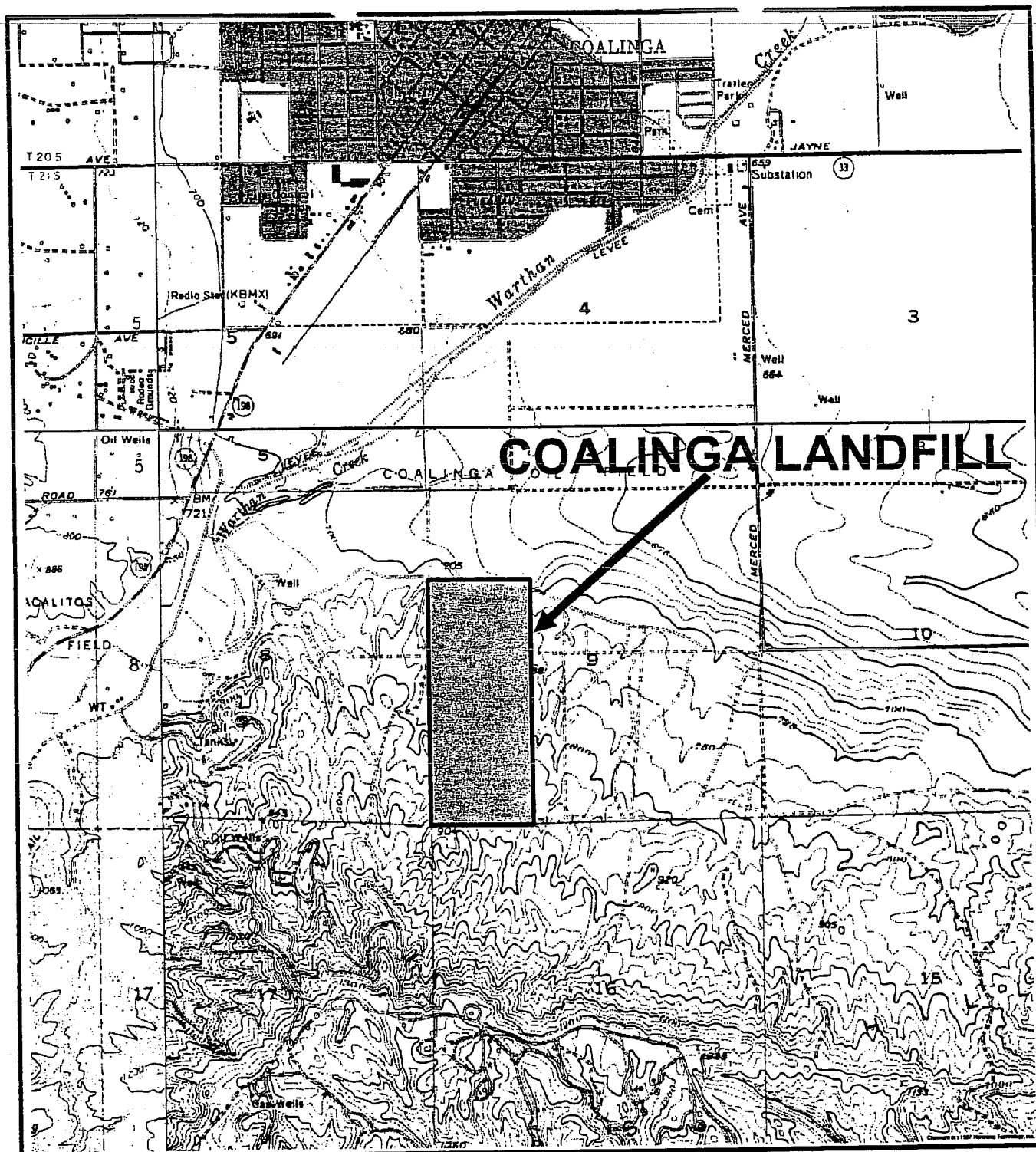
USEPA Method 8150

2,4-D (2,4-Dichlorophenoxyacetic acid)
Dinoseb (DNBP; 2-sec-Butyl-4,6-dinitrophenol)
Silvex (2,4,5-Trichlorophenoxypropionic acid; 2,4,5-TP)
2,4,5-T (2,4,5-Trichlorophenoxyacetic acid)

Organophosphorus Compounds:

USEPA Method 8141

0,0-Diethyl 0-2-pyrazinyl phosphorothioate (Thionazin)
Dimethoate
Disulfoton
Methyl parathion (Parathion methyl)
Parathion
Phorate



LEGEND



WASTE MANAGEMENT FACILITY BOUNDARY

1200 0 2400
FEET



BASE MAP SOURCE: USGS 7.5' KREYENHAGEN HILLS QUADRANGLE

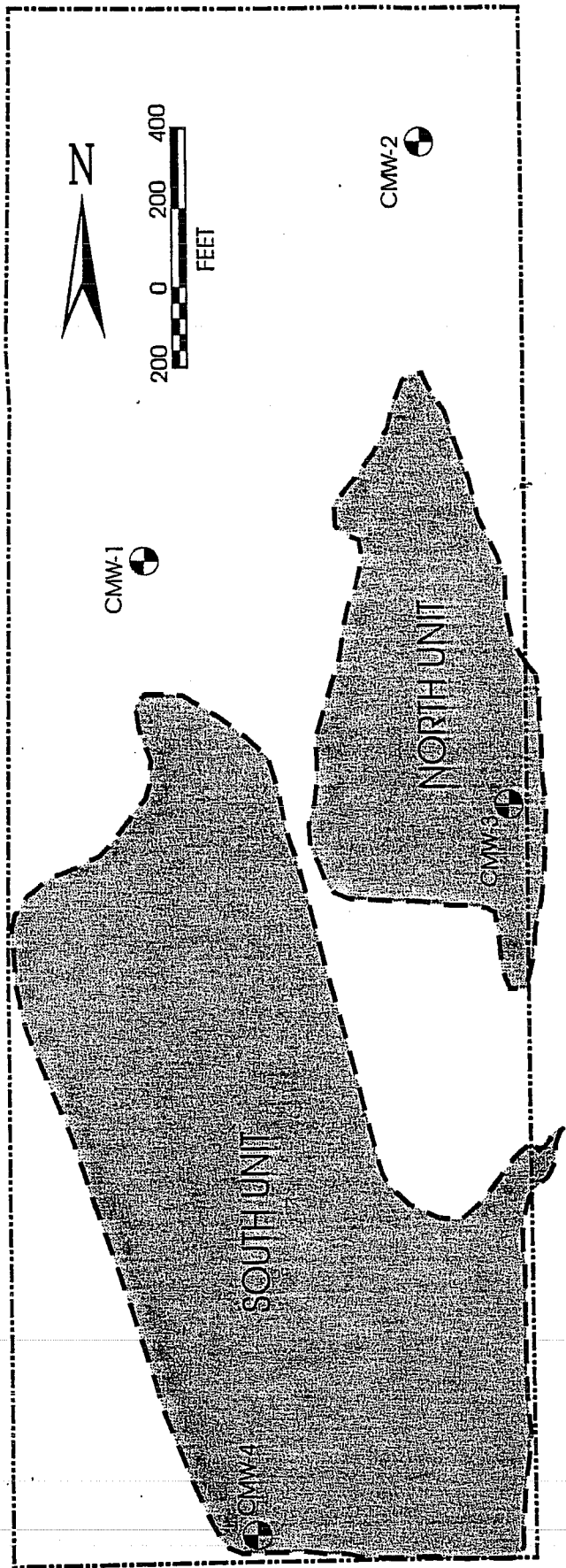
(11/1/00)

(CLR)

ATTACHMENT A
ORDER NO. 5-00-233

WASTE DISCHARGE REQUIREMENTS
FOR
COUNTY OF FRESNO AND
CHEVRON USA, INC.
FOR
OPERATION
COALINGA SOLID WASTE DISPOSAL SITE
FRESNO COUNTY

LOCATION MAP



LEGEND

WASTE MANAGEMENT UNIT

MONITORING WELL LOCATION

WASTE DISPOSAL BOUNDARY

PROPERTY BOUNDARY



ATTACHMENT B
ORDER NO. 5-00-233

WASTE DISCHARGE REQUIREMENTS
FOR
COUNTY OF FRESNO AND
CHEVRON USA, INC.
FOR
OPERATION
COALINGA SOLID WASTE DISPOSAL SITE
FRESNO COUNTY

SITE MAP

(CLR)

(11/1/00)

CALIFORNIA REGIONAL WATER QUALITY CONTROL BOARD
CENTRAL VALLEY REGION

MONITORING AND REPORTING PROGRAM NO. R5-2002-0199

FOR
COUNTY OF FRESNO
AND
RIVER RANCH, L.L.C.
FOR
CLEAN CLOSURE
MENDOTA SOLID WASTE DISPOSAL SITE
FRESNO COUNTY

Compliance with this Monitoring and Reporting Program, with Title 27, California Code of Regulations, Section 20005, et seq. (hereafter Title 27), and with the *Standard Provisions and Reporting Requirements for Waste Discharge Requirements for Nonhazardous Solid Waste Discharges Regulated by Title 27 and/or Subtitle D (27 CCR §20005 et seq. and 40 CFR 258)*, dated April 2000, is ordered by Waste Discharge Requirements Order No. R5-2002-0199.

A. REQUIRED MONITORING REPORTS

<u>Report</u>	<u>Due</u>
1. Groundwater Monitoring (Section D.1)	See Table I
2. Annual Monitoring Summary Report (Order No. R5-2002-0199, E.6.	Annually
3. Surface Water Monitoring (Section D.2)	See Table II
4. Facility Monitoring (Section D.3)	As necessary
5. Response to a Release (Standard Provisions and Reporting Requirements)	As necessary

B. REPORTING

The Discharger shall report monitoring data and information as required in this Monitoring and Reporting Program and as required in Order No. R5-2002-0199 and the Standard Provisions and Reporting Requirements. Reports which do not comply with the required format will be **REJECTED** and the Discharger shall be deemed to be in noncompliance with the waste discharge requirements. In reporting the monitoring data required by this program, the Discharger shall arrange the data in tabular form so that the date, the constituents, the concentrations, and the units are readily discernible. The data

MONITORING AND REPORTING PROGRAM NO. R5-2002-0199
COUNTY OF FRESNO AND
RIVER RANCH, L.L.C.
FOR CLEAN CLOSURE
MENDOTA MUNICIPAL SOLID DISPOSAL SITE
FRESNO COUNTY

-2-

shall be summarized in such a manner so as to illustrate clearly the compliance with waste discharge requirements or the lack thereof. Data shall also be submitted in a digital format acceptable to the Executive Officer.

Each monitoring report shall include a compliance evaluation summary as specified in E. Reporting Requirements, of Order No. R5-2002-0199.

Field and laboratory tests shall be reported in each monitoring report. Monthly, quarterly, semiannual, and annual monitoring reports shall be submitted to the Regional Board in accordance with the following schedule for the calendar period in which samples were taken or observations made.

<u>Sampling Frequency</u>	<u>Reporting Frequency</u>	<u>Reporting Periods End</u>	<u>Report Due Date</u>
Monthly	Quarterly	Last Day of Month	by Semiannual Schedule
Quarterly	Quarterly	31 March	31 August
		30 June	31 August
		30 September	28 February
		31 December	28 February
Semiannually	Semiannually	30 June	31 August
		31 December	28 February
Annually	Annually	31 December	28 February

The Discharger shall submit an **Annual Monitoring Summary Report** to the Regional Board covering the previous monitoring year. The annual report shall contain the information specified in E. Reporting Requirements, of Order No. R5-2002-0199, and a discussion of compliance with the waste discharge requirements and the Water Quality Protection Standard.

The results of **all monitoring** conducted at the site shall reported to the Regional Board in accordance with the reporting schedule above for the calendar period in which samples were taken or observations made.

C. WATER QUALITY PROTECTION STANDARD AND COMPLIANCE PERIOD

1. Water Quality Protection Standard Report

For each waste management unit (Unit), the Water Quality Protection Standard shall consist of all constituents of concern, the concentration limit for each constituent of concern, the point of compliance, and all water quality monitoring points.

The Water Quality Protection Standard for naturally occurring waste constituents consists of the constituents of concern, the concentration limits, and the point of compliance and all monitoring points. The Executive Officer shall review and approve the Water Quality Protection Standard, or any modification thereto, for each monitored medium.

The report shall:

- a. Identify **all distinct bodies of surface and ground water** that could be affected in the event of a release from a Unit or portion of a Unit. This list shall include at least the uppermost aquifer and any permanent or ephemeral zones of perched groundwater underlying the facility.
- b. Include a map showing the monitoring points and background monitoring points for the surface water monitoring program, and groundwater monitoring program. The map shall include the point of compliance in accordance with §20405 of Title 27.
- c. Evaluate the perennial direction(s) of groundwater movement within the uppermost groundwater zone(s).

If subsequent sampling of the background monitoring point(s) indicates significant water quality changes due to either seasonal fluctuations or other reasons unrelated to waste management activities at the site, the Discharger may request modification of the Water Quality Protection Standard.

2. Constituents of Concern

The constituents of concern include all the waste constituents, their reaction products, and hazardous constituents that are reasonably expected to be in or derived from waste contained in the Unit. The constituents of concern for all Units at the facility are those listed in Tables I through III for the specified monitored medium, and Table IV. The Discharger shall monitor all constituents

of concern every five years, or more frequently as required in accordance with a Corrective Action Program.

a. **Monitoring Parameters**

Monitoring parameters are constituents of concern that are the waste constituents, reaction products, hazardous constituents, and physical parameters that provide a reliable indication of a release from a Unit. The monitoring parameters for all Units are those listed in Tables I through II for the specified monitored medium and Table III.

3. **Concentration Limits**

For a naturally occurring constituent of concern, the concentration limit for each constituent of concern shall be determined as follows:

- a. By calculation in accordance with a statistical method pursuant to §20415 of Title 27; or
- b. By an alternate statistical method acceptable to the Executive Officer in accordance with §20415 of Title 27.

The concentration limits for naturally occurring constituents of concern, as established by the Regional Board, are listed in Table V.

The Discharger may propose alternative concentration limits based on site specific data for Executive Officer review and approval.

4. **Point of Compliance**

The point of compliance for the water standard at each Unit is a vertical surface located at the hydraulically downgradient limit of the Unit that extends through the uppermost aquifer underlying the Unit.

5. **Compliance Period**

The compliance period for each Unit shall be the number of years equal to the active life of the Unit plus the closure period. The compliance period is the minimum period during which the Discharger shall conduct a water quality monitoring program subsequent to a release from the Unit. The compliance period shall begin anew each time the Discharger initiates an evaluation monitoring program.

D. MONITORING

The Discharger shall comply with the detection monitoring program provisions of Title 27 for groundwater, and surface water, in accordance with Detection Monitoring Specification D.1 and D.4 of Waste Discharge Requirements, Order No. R5-2002-0199. All monitoring shall be conducted in accordance with a Sample Collection and Analysis Plan, which includes quality assurance/quality control standards, that is acceptable to the Executive Officer.

All point of compliance monitoring wells established for the detection monitoring program shall constitute the monitoring points for the groundwater Water Quality Protection Standard. All detection monitoring program groundwater monitoring wells and surface water monitoring points shall be sampled and analyzed for monitoring parameters and constituents of concern as indicated and listed in Tables I through II.

Method detection limits and practical quantitation limits shall be reported. All peaks shall be reported, including those which cannot be quantified and/or specifically identified. Metals shall be analyzed in accordance with the methods listed in Table IV.

The Discharger may, with the approval of the Executive Officer, use alternative analytical test methods, including new USEPA approved methods, provided the methods have method detection limits equal to or lower than the analytical methods specified in this Monitoring and Reporting Program.

1. Groundwater

The Discharger shall operate and maintain a groundwater detection monitoring system that complies with the applicable provisions of §20415 and §20420 of Title 27 in accordance with a Detection Monitoring Program approved by the Executive Officer. The Discharger shall collect, preserve, and transport groundwater samples in accordance with the approved Sample Collection and Analysis Plan.

The Discharger shall determine the groundwater flow rate and direction in the uppermost aquifer and in any zones of perched water and in any additional zone of saturation monitored pursuant to this Monitoring and Reporting Program, and report the results semiannually, including the times of highest and lowest elevations of the water levels in the wells.

Hydrographs of each well shall be submitted showing the elevation of groundwater with respect to the elevations of the top and bottom of the screened

interval and the elevation of the pump intake. Hydrographs of each well shall be prepared quarterly and submitted annually.

Groundwater samples shall be collected from the point-of-compliance wells, background wells, and any additional wells added as part of the approved groundwater monitoring system. Samples shall be collected and analyzed for the monitoring parameters in accordance with the methods and frequency specified in Table I.

The monitoring parameters shall also be evaluated each reporting period with regards to the cation/anion balance, and the results shall be graphically presented using a Stiff diagram, a Piper graph, or a Schueller plot. Samples for the constituents of concern specified in Table I shall be collected and analyzed in accordance with the methods listed in Table IV every five years.

2. Surface Water Monitoring

The Discharger shall install and operate a surface water detection monitoring system where appropriate that complies with the applicable provisions of §20415 and §20420 of Title 27 and has been approved by the Executive Officer.

For all monitoring points and background monitoring points assigned to surface water detection monitoring, samples shall be collected and analyzed for the monitoring parameters in accordance with the methods and frequency specified in Table II. All surface water monitoring samples shall be collected and analyzed for the constituents of concern specified in Table II every five years. All monitoring parameters shall be graphed so as to show historical trends at each sample location.

3. Facility Monitoring

a. Facility Inspection

Annually, prior to the anticipated rainy season, but no later than **30 September**, the Discharger shall conduct an inspection of the facility. The inspection shall assess damage to the drainage control system, groundwater monitoring equipment (including wells, etc.), and shall include the Standard Observations contained in section E.4.f. of Order No. R5-2002-0199. Any necessary construction, maintenance, or repairs shall be completed by **31 October**. By **15 November** of each year, the Discharger shall submit an annual report describing the results of the inspection and

MONITORING AND REPORTING PROGRAM NO. R5-2002-0199
COUNTY OF FRESNO AND
RIVER RANCH, L.L.C.
FOR CLEAN CLOSURE
MENDOTA MUNICIPAL SOLID DISPOSAL SITE
FRESNO COUNTY

-7-

the repair measures implemented, including photographs of the problem and the repairs.

b. **Storm Events**

The Discharger shall inspect all precipitation, diversion, and drainage facilities for damage **within 7 days** following *major storm events*.

Necessary repairs shall be completed **within 30 days** of the inspection.

The Discharger shall report any damage and subsequent repairs within 45 days of completion of the repairs, including photographs of the problem and the repairs.

The Discharger shall implement the above monitoring program on the effective date of this Program.

Ordered by: Thomas R Pinkos
THOMAS R. PINKOS, Acting Executive Officer

18 October 2002

(Date)

PAO:pao/rac

TABLE I
GROUNDWATER DETECTION MONITORING PROGRAM

<u>Parameter</u>	<u>Units</u>	<u>Frequency</u>
Field Parameters		
Groundwater Elevation	Ft. & hundredths, M.S.L.	Quarterly
Temperature	°C	Semiannual
Electrical Conductivity	µmhos/cm	Semiannual
pH	pH units	Semiannual
Turbidity	Turbidity units	Semiannual
Monitoring Parameters		
Total Dissolved Solids (TDS)	mg/L	Quarterly
Chloride	mg/L	Quarterly
Carbonate	mg/L	Quarterly
Bicarbonate	mg/L	Quarterly
Nitrate - Nitrogen	mg/L	Quarterly
Sulfate	mg/L	Quarterly
Calcium	mg/L	Quarterly
Magnesium	mg/L	Quarterly
Potassium	mg/L	Quarterly
Sodium	mg/L	Quarterly
Volatile Organic Compounds (USEPA Method 8260, see Table III)	µg/L	Quarterly
Constituents of Concern (see Table IV)		
Total Organic Carbon	mg/L	5 years
Inorganics (dissolved)	mg/L	5 years
Volatile Organic Compounds (USEPA Method 8260, extended list)	µg/L	5 years
Semi-Volatile Organic Compounds (USEPA Method 8270)	µg/L	5 years
Chlorophenoxy Herbicides (USEPA Method 8150)	µg/L	5 years
Organophosphorus Compounds (USEPA Method 8141)	µg/L	5 years

TABLE II
SURFACE WATER DETECTION MONITORING PROGRAM

<u>Parameter</u>	<u>Units</u>	<u>Frequency</u>
Field Parameters		
Temperature	°C	Quarterly
Electrical Conductivity	µmhos/cm	Quarterly
pH	pH units	Quarterly
Turbidity	Turbidity units	Quarterly
Monitoring Parameters		
Total Dissolved Solids (TDS)	mg/L	Quarterly
Carbonate	mg/L	Quarterly
Bicarbonate	mg/L	Quarterly
Chloride	mg/L	Quarterly
Nitrate - Nitrogen	mg/L	Quarterly
Sulfate	mg/L	Quarterly
Calcium	mg/L	Quarterly
Magnesium	mg/L	Quarterly
Potassium	mg/L	Quarterly
Sodium	mg/L	Quarterly
Volatile Organic Compounds (USEPA Method 8260, see Table III)	mg/L	Quarterly
Constituents of Concern (see Table IV)		
Total Organic Carbon	mg/L	5 years
Inorganics (dissolved)	mg/L	5 years
Volatile Organic Compounds (USEPA Method 8260, extended list)	µg/L	5 years
Semi-Volatile Organic Compounds (USEPA Method 8270)	µg/L	5 years
Chlorophenoxy Herbicides (USEPA Method 8150)	µg/L	5 years
Organophosphorus Compounds (USEPA Method 8141)	µg/L	5 years

TABLE III
MONITORING PARAMETERS FOR DETECTION MONITORING

Surrogates for Metallic Constituents:

pH
Total Dissolved Solids
Electrical Conductivity
Chloride
Sulfate
Nitrate nitrogen

Constituents included in VOC:

USEPA Method 8260

Acetone
Acrylonitrile
Benzene
Bromochloromethane
Bromodichloromethane
Bromoform (Tribromomethane)
Carbon disulfide
Carbon tetrachloride
Chlorobenzene
Chloroethane (Ethyl chloride)
Chloroform (Trichloromethane)
Dibromochloromethane (Chlorodibromomethane)
1,2-Dibromo-3-chloropropane (DBCP)
1,2-Dibromoethane (Ethylene dibromide; EDB)
o-Dichlorobenzene (1,2-Dichlorobenzene)
p-Dichlorobenzene (1,4-Dichlorobenzene)
trans-1,4-Dichloro-2-butene
Dichlorodifluoromethane (CFC-12)
1,1-Dichloroethane (Ethylidene chloride)
1,2-Dichloroethane (Ethylene dichloride)
1,1 -Dichloroethylene (1,1 -Dichloroethene; Vinylidene chloride)
cis- 1,2-Dichloroethylene (cis- 1,2-Dichloroethene)
trans-1,2-Dichloroethylene (trans-1,2-Dichloroethene)
1,2-Dichloropropane (Propylene dichloride)
cis- 1,3-Dichloropropene
trans- 1,3-Dichloropropene
Ethylbenzene
2-Hexanone (Methyl butyl ketone)
Methyl bromide (Bromomethane)

TABLE III
MONITORING PARAMETERS FOR DETECTION MONITORING
Continued

Methyl chloride (Chloromethane)
Methylene bromide (Dibromomethane)
Methylene chloride (Dichloromethane)
Methyl ethyl ketone (MEK: 2-Butanone)
Methyl iodide (Iodomethane)
4-Methyl-2-pentanone (Methyl isobutylketone)
Styrene
1,1,1,2-Tetrachloroethane
1,1,2,2-Tetrachloroethane
Tetrachloroethylene (Tetrachloroethene; Perchloroethylene)
Toluene
1,1,1-Trichloroethane (Methylchloroform)
1,1,2-Trichloroethane
Trichloroethylene (Trichloroethene)
Trichlorofluoromethane (CFC- 11)
1,2,3-Trichloropropane
Vinyl acetate
Vinyl chloride
Xylenes

TABLE IV
CONSTITUENTS OF CONCERN & APPROVED USEPA ANALYTICAL METHODS

<u>Inorganics (dissolved):</u>	<u>USEPA Method</u>
--------------------------------	---------------------

Aluminum	6010
Antimony	6010
Barium	6010
Beryllium	6010
Cadmium	6010
Chromium	6010
Cobalt	6010
Copper	6010
Silver	6010
Tin	6010
Vanadium	6010
Zinc	6010
Iron	6010
Manganese	6010
Arsenic	7062
Lead	7421
Mercury	7470
Nickel	7520
Selenium	7742
Thallium	7841
Cyanide	9010
Sulfide	9030

Volatile Organic Compounds:

USEPA Method 8260

Acetone
Acetonitrile (Methyl cyanide)
Acrolein
Acrylonitrile
Allyl chloride (3-Chloropropene)
Benzene
Bromochloromethane (Chlorobromomethane)
Bromodichloromethane (Dibromochloromethane)
Bromoform (Tribromomethane)
Carbon disulfide
Carbon tetrachloride
Chlorobenzene
Chloroethane (Ethyl chloride)
Chloroform (Trichloromethane)
Chloroprene
Dibromochloromethane (Chlorodibromomethane)

TABLE IV

CONSTITUENTS OF CONCERN & APPROVED USEPA ANALYTICAL METHODS

Continued

1,2-Dibromo-3-chloropropane (DBCP)
1,2-Dibromoethane (Ethylene dibromide; EDB)
o-Dichlorobenzene (1,2-Dichlorobenzene)
m-Dichlorobenzene (1,3-Dichlorobenzene)
p-Dichlorobenzene (1,4-Dichlorobenzene)
trans- 1,4-Dichloro-2-butene
Dichlorodifluoromethane (CFC 12)
1,1 -Dichloroethane (Ethylidene chloride)
1,2-Dichloroethane (Ethylene dichloride)
1,1 -Dichloroethylene (1, 1-Dichloroethene; Vinylidene chloride)
cis- 1,2-Dichloroethylene (cis- 1,2-Dichloroethene)
trans- 1,2-Dichloroethylene (trans- 1,2-Dichloroethene)
1,2-Dichloropropane (Propylene dichloride)
1,3-Dichloropropane (Trimethylene dichloride)
2,2-Dichloropropane (Isopropylidene chloride)
1,1 -Dichloropropene
cis- 1,3-Dichloropropene
trans- 1,3-Dichloropropene
Ethylbenzene
Ethyl methacrylate
Hexachlorobutadiene
2-Hexanone (Methyl butyl ketone)
Isobutyl alcohol
Methacrylonitrile
Methyl bromide (Bromomethane)
Methyl chloride (Chloromethane)
Methyl ethyl ketone (MEK; 2-Butanone)
Methyl iodide (Iodomethane)
Methyl methacrylate
4-Methyl-2-pentanone (Methyl isobutyl ketone)
Methylene bromide (Dibromomethane)
Methylene chloride (Dichloromethane)
Naphthalene
Propionitrile (Ethyl cyanide)
Styrene
1,1,1,2-Tetrachloroethane
1,1,2,2-Tetrachloroethane
Tetrachloroethylene (Tetrachloroethene; Perchloroethylene; PCE)
Toluene
1,2,4-Trichlorobenzene
1,1,1 -Trichloroethane, Methylchloroform
1,1,2-Trichloroethane
Trichloroethylene (Trichloroethene; TCE)
Trichlorofluoromethane (CFC- 11)

TABLE IV

CONSTITUENTS OF CONCERN & APPROVED USEPA ANALYTICAL METHODS

Continued

1,2,3-Trichloropropane
Vinyl acetate
Vinyl chloride (Chloroethene)
Xylene (total)

Semi-Volatile Organic Compounds:

USEPA Method 8270 - base, neutral, & acid extractables

Acenaphthene
Acenaphthylene
Acetophenone
2-Acetylaminofluorene (2-AAF)
Aldrin
4-Aminobiphenyl
Anthracene
Benzo[a]anthracene (Benzanthracene)
Benzo[b]fluoranthene
Benzo[k]fluoranthene
Benzo[g,h,i]perylene
Benzo[a]pyrene
Benzyl alcohol
Bis(2-ethylhexyl) phthalate
alpha-BHC
beta-BHC
delta-BHC
gamma-BHC (Lindane)
Bis(2-chloroethoxy)methane
Bis(2-chloroethyl) ether (Dichloroethyl ether)
Bis(2-chloro-1-methylethyl) ether (Bis(2-chloroisopropyl) ether; DCIP)
4-Bromophenyl phenyl ether
Butyl benzyl phthalate (Benzyl butyl phthalate)
Chlordane
p-Chloroaniline
Chlorobenzilate
p-Chloro-m-cresol (4-Chloro-3-methylphenol)
2-Chloronaphthalene
2-Chlorophenol
4-Chlorophenyl phenyl ether
Chrysene
o-Cresol (2-methylphenol)
m-Cresol (3-methylphenol)
p-Cresol (4-methylphenol)
4,4'-DDD

TABLE IV

CONSTITUENTS OF CONCERN & APPROVED USEPA ANALYTICAL METHODS

Continued

4,4'-DDE
4,4'-DDT
Diallate
Dibenz[a,h]anthracene
Dibenzofuran
Di-n-butyl phthalate
o-Dichlorobenzene (1,2-Dichlorobenzene)
m-Dichlorobenzene (1,3-Dichlorobenzene)
p-Dichlorobenzene (1,4-Dichlorobenzene)
3,3'-Dichlorobenzidine
2,4-Dichlorophenol
2,6-Dichlorophenol
Dieldrin
Diethyl phthalate
p-(Dimethylamino)azobenzene
7,12-Dimethylbenz[a]anthracene
3,3'-Dimethylbenzidine
2,4-Dimethylphenol (m-Xylenol)
Dimethyl phthalate
m-Dinitrobenzene
4,6-Dinitro-o-cresol (4,6-Dinitro-2-methylphenol)
2,4-Dinitrophenol
2,4-Dinitrotoluene
2,6-Dinitrotoluene
Di-n-octyl phthalate
Diphenylamine
Endosulfan I
Endosulfan II
Endosulfan sulfate
Endrin
Endrin aldehyde
Ethyl methanesulfonate
Famphur
Fluoranthene
Fluorene
Heptachlor
Heptachlor epoxide
Hexachlorobenzene
Hexachlorobutadiene
Hexachlorocyclopentadiene
Hexachloroethane
Hexachloropropene
Indeno(1,2,3-c,d)pyrene
Isodrin

TABLE IV

CONSTITUENTS OF CONCERN & APPROVED USEPA ANALYTICAL METHODS

Continued

Isophorone
Isosafrole
Kepone
Methapyrilene
Methoxychlor
3-Methylcholanthrene
Methyl methanesulfonate
2-Methylnaphthalene
Naphthalene
1,4-Naphthoquinone
1-Naphthylamine
2-Naphthylamine
o-Nitroaniline (2-Nitroaniline)
m-Nitroaniline (3-Nitroaniline)
p-Nitroaniline (4-Nitroaniline)
Nitrobenzene
o-Nitrophenol (2-Nitrophenol)
p-Nitrophenol (4-Nitrophenol)
N-Nitrosodi-n-butylamine (Di-n-butylnitrosamine)
N-Nitrosodiethylamine (Diethylnitrosamine)
N-Nitrosodimethylamine (Dimethylnitrosamine)
N-Nitrosodiphenylamine (Diphenylnitrosamine)
N-Nitrosodipropylamine (N-Nitroso-N-dipropylamine; Di-n-propylnitrosamine)
N-Nitrosomethylethylamine (Methylethylnitrosamine)
N-Nitrosopiperidine
N-Nitrosopyrrolidine
5-Nitro-o-toluidine
Pentachlorobenzene
Pentachloronitrobenzene (PCNB)
Pentachlorophenol
Phenacetin
Phenanthrene
Phenol
p-Phenylenediamine
Polychlorinated biphenyls (PCBs; Aroclors)
Pronamide
Pyrene
Safrole
1,2,4,5-Tetrachlorobenzene
2,3,4,6-Tetrachlorophenol
o-Toluidine
Toxaphene
1,2,4-Trichlorobenzene
2,4,5-Trichlorophenol

TABLE IV

CONSTITUENTS OF CONCERN & APPROVED USEPA ANALYTICAL METHODS

Continued

2,4,6-Trichlorophenol
0,0,0-Triethyl phosphorothioate
sym-Trinitrobenzene

Chlorophenoxy Herbicides:

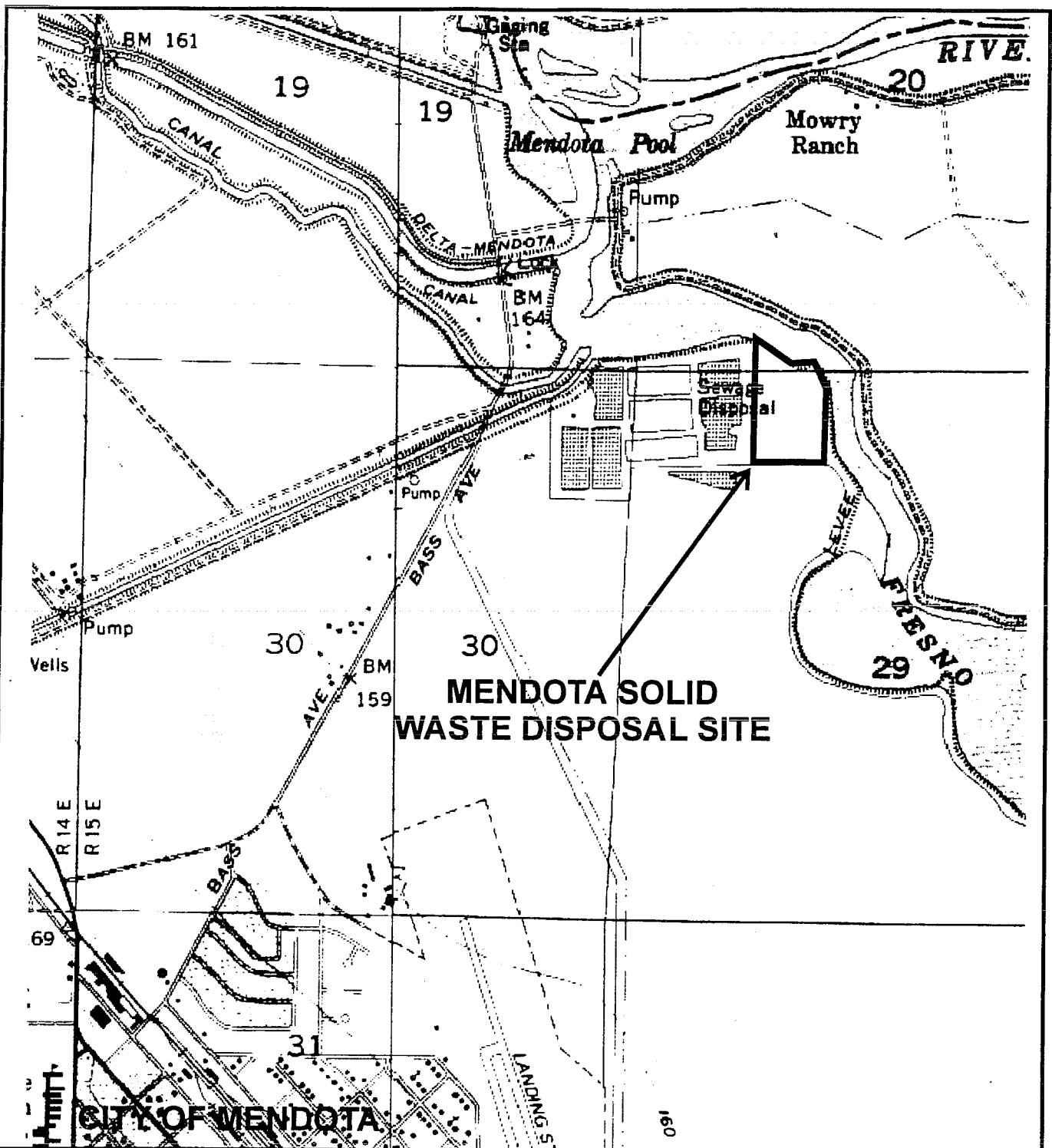
USEPA Method 8150

2,4-D (2,4-Dichlorophenoxyacetic acid)
Dinoseb (DNBP; 2-sec-Butyl-4,6-dinitrophenol)
Silvex (2,4,5-Trichlorophenoxypropionic acid; 2,4,5-TP)
2,4,5-T (2,4,5-Trichlorophenoxyacetic acid)

Organophosphorus Compounds:

USEPA Method 8141

0,0-Diethyl 0-2-pyrazinyl phosphorothioate (Thionazin)
Dimethoate
Disulfoton
Methyl parathion (Parathion methyl)
Parathion
Phorate



LEGEND



APPROXIMATE SITE BOUNDARY



MILES



Map Source: MENDOTA USGS 7 1/2' Quadrangle.

(04/25/02)

(PAO)

ATTACHMENT A

ORDER NO. R5-2002-0199

WASTE DISCHARGE REQUIREMENTS
FOR

COUNTY OF FRESNO AND RIVER RANCH, L.L.C.

FOR

CLEAN CLOSURE

MENDOTA SOLID WASTE DISPOSAL SITE

FRESNO COUNTY

LOCATION MAP

INFORMATION SHEET

ORDER NO. R5-2002-0199
COUNTY OF FRESNO AND
RIVER RANCH, L.L.C.
FOR CLEAN CLOSURE
MENDOTA SOLID WASTE DISPOSAL SITE
FRESNO COUNTY

The County of Fresno maintains an inactive municipal solid waste landfill on land covering two parcels. One parcel is owned by the County of Fresno with a smaller parcel owned by River Ranch, L.L.C., a California limited liability company. The approximate 22-acre facility contains one approximate 21-acre unlined waste management unit (Unit). The landfill is about one and a half miles northeast of the City of Mendota, and one mile southeast of the Mendota Dam, which creates a pool along the Fresno Slough. The landfill is immediately south and west of this pool and is within the 100-year floodplain according to FEMA maps.

Land uses within 1,000 feet of the site are agriculture, wastewater treatment, and recreation. The climate is semi-arid with hot, dry summers and cool winters. The average annual precipitation is 6.59 inches with an average annual pan evaporation of 79.21 inches.

The facility is currently regulated by Waste Discharge Requirements Order No. 91-225. The detection monitoring program is deficient because the facility does not have adequate groundwater or surface water detection monitoring systems. Currently, there is an insufficient number of groundwater monitoring wells to represent the background groundwater quality. A water quality protection standard has not been established, preventing a determination of groundwater impacts by inorganic waste constituents.

The Discharger has evaluated and identified clean closure of the landfill as the preferred closure method. The purpose of this Order is to establish a time schedule for clean closure of the landfill, and requires the Discharger to install an adequate groundwater detection monitoring system, submit a water quality protection standard, and determine whether the Unit has caused a release to groundwater, in accordance with Title 27, CCR, Section 20005 et seq. (Title 27).

The landfill is located on Quaternary floodplain deposits comprised of a heterogeneous mixture of sands, silts, and clays. First encountered groundwater is unconfined and exists at a depth of five to twenty feet below the native ground surface. Groundwater has historically been present within the refuse.

Groundwater is encountered in the Tertiary sediments under confined and unconfined conditions. Water samples collected from a nearby domestic well and the Fresno Slough

INFORMATION SHEET - ORDER NO. R5-2002-0199
COUNTY OF FRESNO AND
RIVER RANCH, L.L.C.
FOR CLEAN CLOSURE
MENDOTA MUNICIPAL SOLID DISPOSAL SITE
FRESNO COUNTY

-2-

indicate the both groundwater and surface water have an electrical conductivity of about 800 micromhos/cm.

Non-naturally occurring waste constituents have been detected sporadically in groundwater. The infrequent nature of the detections of non-naturally occurring waste constituents is problematic for determining whether groundwater degradation by these waste constituents was caused by a release from the Unit. The Discharger's detection monitoring program is inadequate because there is no background groundwater monitoring data, and surface water is not being monitored.

Volatile organic compounds are often detected in a release from a landfill, and are the primary waste constituents detected in groundwater beneath a municipal solid waste landfill. Since volatile organic compounds are not usually naturally occurring, and thus usually have no background value, they are not amenable to the statistical analysis procedures contained in Title 27 for the determination of a release of wastes from a Unit. Title 27 does provide for the non-statistical evaluation of monitoring data that will provide the best assurance of the earliest possible detection of a release from a Unit. However, Title 27 does not specify a specific method for non-statistical evaluation of monitoring data.

The Regional Board may specify a non-statistical data analysis method pursuant to Section 20080(a)(1) of Title 27. In order to provide the best assurance of the earliest possible detection of a release of non-naturally occurring waste constituents from a Unit, this Order specifies a non-statistical method for the evaluation of monitoring data.

The specified non-statistical method for evaluation of monitoring data in this Order provides two criteria (or triggers) for making the determination that there has been a release of waste constituents from a Unit. The presence of two waste constituents above their respective method detection limit (MDL), or one waste constituent detected above its practical quantitation limit (PQL), indicates that a release of waste from the Unit has occurred. Following an indication of a release, verification testing will be conducted to determine whether there has been a release from the Unit, or there is a source of the detected constituents other than the landfill, or the detection was a false detection. Although the detection of one waste constituent above its MDL is sufficient to provide for the earliest possible detection of a release in accordance with Title 27, the detection of two waste constituents above the MDL as a trigger is appropriate due the higher risk of false positive analytical results and the corresponding increase in sampling and analytical expenses from the use of detection one waste constituent above its MDL as a trigger.

On 9 October 1991, the United States Environmental Protection Agency promulgated regulations (Title 40, Code of Federal Regulations, Parts 257 and 258, "federal municipal solid waste [MSW] regulations" or "Subtitle D") that apply, in California, to dischargers who own or operate Class II or Class III landfill units at which municipal solid waste is

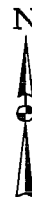
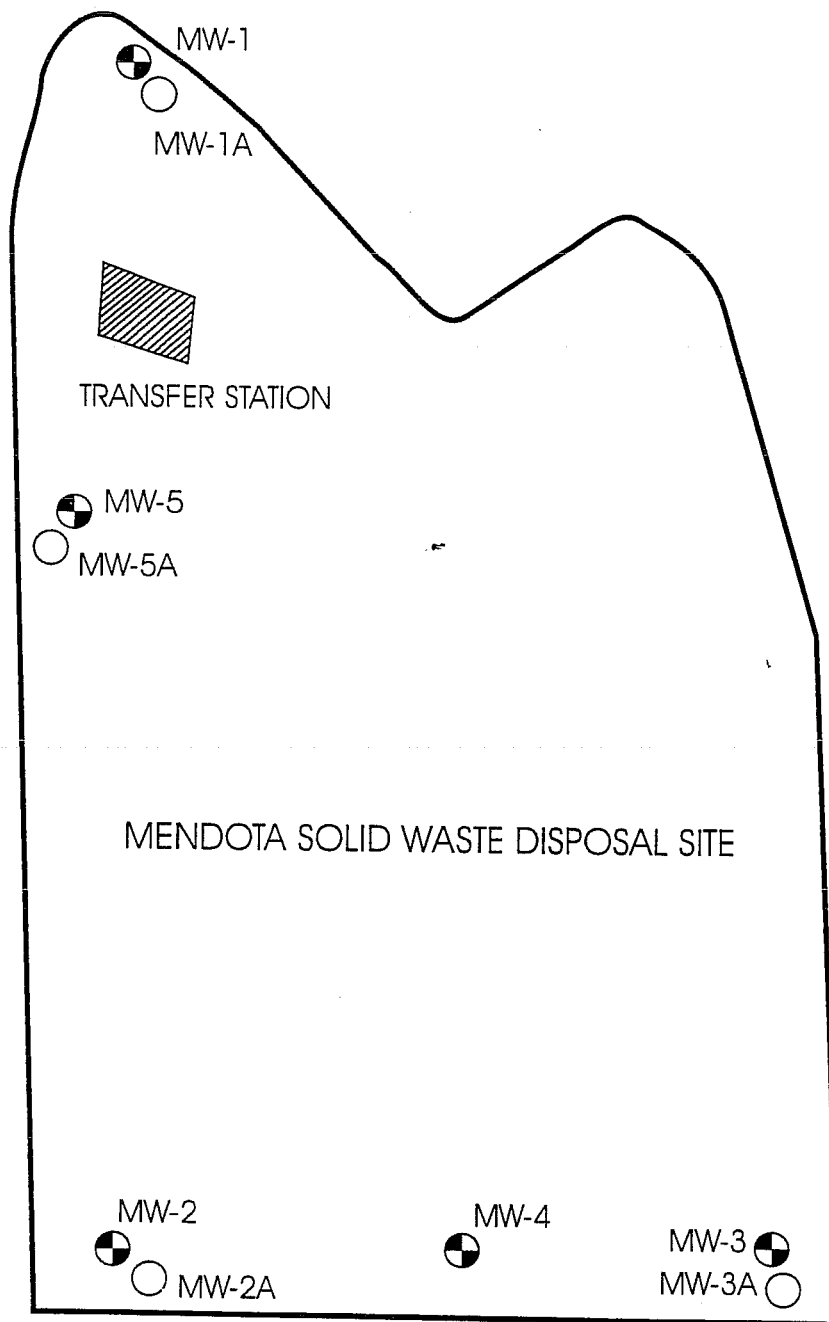
INFORMATION SHEET - ORDER NO. R5-2002-0199
COUNTY OF FRESNO AND
RIVER RANCH, L.L.C.
FOR CLEAN CLOSURE
MENDOTA MUNICIPAL SOLID DISPOSAL SITE
FRESNO COUNTY

-3-

discharged. Section 258.1(c) of Subtitle D states that Subtitle D regulations do not apply to municipal solid waste landfills that do not receive waste after 9 October 1991. The facility ceased discharge in 1981. Therefore, the provisions of Subtitle D do not apply to this Unit.

The action to revise waste discharge requirements for this existing facility is exempt from the provisions of the California Environmental Quality Act (CEQA), Public Resource Code §21000, et seq., and the CEQA guidelines, in accordance with Title 14, CCR, §15301. Revision of the waste discharge requirements updates the requirements to conform with the California Water Code and Title 27, California Code of Regulations, §20005 et seq.

PAO:pao/rac:10/18/02



NOT TO SCALE

MENDOTA SOLID WASTE DISPOSAL SITE

LEGEND



APPROXIMATE SITE BOUNDARY



EXISTING MONITORING WELL LOCATION



NEW MONITORING WELL LOCATION

ATTACHMENT B

ORDER NO R5-2002-0199
WASTE DISCHARGE REQUIREMENTS
FOR
COUNTY OF FRESNO AND RIVER RANCH, L.L.C.
FOR
CLEAN CLOSURE
MENDOTA SOLID WASTE DISPOSAL SITE
FRESNO COUNTY
SITE MAP

CALIFORNIA REGIONAL WATER QUALITY CONTROL BOARD
CENTRAL VALLEY REGION

MONITORING AND REPORTING PROGRAM NO. 99-124
FOR
SOUTHEAST REGIONAL SOLID WASTE COMMISSION
FOR
POST-CLOSURE MAINTENANCE
SOUTHEAST REGIONAL MUNICIPAL SOLID WASTE LANDFILL
FRESNO COUNTY

Compliance with this Monitoring and Reporting Program, with Title 27, California Code of Regulations, Section 20005, et seq. (hereafter Title 27), and with the Standard Provisions and Reporting Requirements dated August 1997, is ordered by Waste Discharge Requirements Order No. 99-124.

Failure to comply with this Program, or with the Standard Provisions and Reporting Requirements, constitutes noncompliance with the Waste Discharge Requirements and with the California Water Code, which can result in the imposition of civil monetary liability.

A. REQUIRED MONITORING REPORTS

<u>Report</u>	<u>Due</u>
1. Groundwater Monitoring (Section D.1)	See Table I
2. Annual Monitoring Summary Report (Standard Provisions and Reporting Requirements)	Annually
3. Facility Monitoring (Section D.5)	As necessary
4. Response to a Release (Standard Provisions and Reporting Requirements)	As necessary

B. REPORTING

The Discharger shall report monitoring data and information as required in this Monitoring and Reporting Program and as required in the Standard Provisions and Reporting Requirements. Reports which do not comply with the required format will be **REJECTED** and the Discharger shall be deemed to be in noncompliance with the waste discharge requirements. In reporting the monitoring data required by this program, the Discharger shall arrange the data in tabular form so that the date, the constituents, the concentrations, and the units are readily discernible. Data shall also be submitted in a digital database format acceptable to the Executive Officer. The data shall be summarized in such a manner so as to illustrate clearly the compliance with waste discharge requirements or the lack

MONITORING AND REPORTING PROGRAM NO. 99-124
SOUTHEAST REGIONAL SOLID WASTE COMMISSION
POST-CLOSURE MAINTENANCE
SOUTHEAST REGIONAL MUNICIPAL SOLID WASTE LANDFILL
FRESNO COUNTY

-2-

thereof. A short discussion of the monitoring results, including notations of any water quality violations, shall precede the tabular summaries.

Field and laboratory tests shall be reported in each monitoring report. Monthly, quarterly, semiannual, and annual monitoring reports shall be submitted to Board staff in accordance with the following schedule for the calendar period in which samples were taken or observations made. The results of any monitoring done more frequently than required at the locations specified herein shall be reported to Board staff.

<u>Sampling Frequency</u>	<u>Reporting Frequency</u>	<u>Reporting Periods End</u>	<u>Report Date Due</u>
Monthly	Quarterly	Last Day of Month	by Quarterly Schedule
Quarterly	Quarterly	31 March	31 August
		30 June	31 August
		30 September	28 February
		31 December	28 February
Semi-Annually	Semi-Annually	30 June	31 August
		31 December	28 February
Annually	Annually	31 December	28 February

The annual report to be submitted to Board staff shall contain both tabular and graphical summaries of the monitoring data obtained during the previous twelve months, so as to show historical trends at each well. The report shall include a discussion of compliance with the waste discharge requirements and the water quality protection standard.

C. WATER QUALITY PROTECTION STANDARD AND COMPLIANCE PERIOD

1. Water Quality Protection Standard Report

For each waste management unit, the water quality protection standard consists of a list of constituents of concern and monitoring parameters, concentration limits for each constituent of concern, the point of compliance, and all monitoring points.

The Discharger shall submit a proposed water quality protection standard for review and approval within one year from the date of adoption of this Monitoring and Reporting Program by the Board. The Executive Officer shall review the data and the proposed water quality protection standard in determining the final water quality protection standard for each monitored medium.

MONITORING AND REPORTING PROGRAM No. 99-124
SOUTHEAST REGIONAL SOLID WASTE COMMISSION
POST-CLOSURE MAINTENANCE
SOUTHEAST REGIONAL MUNICIPAL SOLID WASTE LANDFILL
FRESNO COUNTY

-3-

The report shall:

- a) Identify **all distinct bodies of ground water** that could be affected in the event of a release from a waste management unit or portion of a waste management unit. This list shall include at least the uppermost aquifer and any permanent or ephemeral zones of perched groundwater underlying the waste management facility.
- b) Include a map showing the monitoring points and background monitoring points for the saturated zone(s) and showing the point of compliance in accordance with §20405 of Title 27.
- c) Evaluate the perennial direction(s) of groundwater movement within the uppermost groundwater zone(s).

If subsequent sampling of the background monitoring point(s) indicates significant water quality changes due to either seasonal fluctuations or other reasons unrelated to waste management activities at the site, the Discharger may request modification of the water quality protection standard.

2. Constituents of Concern

The constituents of concern are the waste constituents, reaction products, and hazardous constituents that are reasonably expected to be in or derived from waste contained in the waste management unit. The constituents of concern for all waste management units at the facility are those listed in Table IV. The Discharger shall monitor all constituents of concern in Table IV every five years, or more frequently as required in accordance with a Corrective Action Program.

a. Monitoring Parameters

Monitoring parameters are the waste constituents, reaction products, hazardous constituents, and physical parameters that provide a reliable indication of a release from a waste management unit. The monitoring parameters for all waste management units are those listed in Tables I through IV for the specified monitored medium.

3. Concentration Limits

The concentration limits for each constituent of concern are as follows:

- a. for naturally occurring constituents of concern, the concentration limit shall be the calculated statistical concentration limit.

MONITORING AND REPORTING PROGRAM NO. 99-124
SOUTHEAST REGIONAL SOLID WASTE COMMISSION
POST-CLOSURE MAINTENANCE
SOUTHEAST REGIONAL MUNICIPAL SOLID WASTE LANDFILL
FRESNO COUNTY

-4-

- b. for anthropogenic (not naturally occurring) constituents, which have no natural and, therefore, no background values, the concentration limit (water quality protection standard) shall be the detection limit of the analytical method(s) used.

The Discharger shall use the statistical method approved by the Executive Officer and the groundwater quality data obtained from the detection monitoring program to revise the concentration limits annually. The Discharger shall submit the revised concentration limits to the Executive Officer for review and approval in the annual monitoring report.

4. Point of Compliance

The point of compliance for each waste management unit is the vertical surface located at the hydraulically downgradient limit of the waste management unit that extends through the uppermost aquifer underlying the unit.

a. Monitoring Points

All downgradient wells established for groundwater monitoring shall constitute the monitoring points for the groundwater quality protection standard. All approved monitoring wells and leachate monitoring points shall be sampled and analyzed for monitoring parameters and constituents of concern as indicated and listed in Tables I through IV.

5. Compliance Period

The compliance period for each waste management unit shall be the number of years equal to the active life of the waste management unit plus the closure period. The compliance period is the minimum period during which the Discharger shall conduct a water quality monitoring program subsequent to a release from the unit. The compliance period shall begin anew each time the Discharger initiates an evaluation monitoring program.

D. MONITORING

The Discharger shall comply with the detection monitoring provisions of Title 27 for groundwater in accordance with Detection Monitoring Specification D.2 and D.3 of Waste Discharger Requirements Order No. 99-124. All monitoring shall be conducted in accordance with a Sample Collection and Analysis Plan, which includes quality assurance/quality control standards, that is acceptable to the Executive Officer.

MONITORING AND REPORTING PROGRAM No. 99-124
SOUTHEAST REGIONAL SOLID WASTE COMMISSION
POST-CLOSURE MAINTENANCE
SOUTHEAST REGIONAL MUNICIPAL SOLID WASTE LANDFILL
FRESNO COUNTY

-5-

Method detection limits and practical quantitation limits shall be reported. All peaks shall be reported, including those which cannot be quantified and/or specifically identified. Metals shall be analyzed in accordance with the methods listed in Table IV.

The Discharger may use alternative analytical test methods, including new EPA approved methods, provided the methods have method detection limits equal to or lower than the analytical methods specified in this Monitoring and Reporting Program.

1. Groundwater

The Discharger shall install and operate a groundwater detection monitoring system that complies with the applicable provisions of §20415 and §20420 of Title 27 in accordance with a Detection Monitoring Plan approved by the Executive Officer. The Discharger shall collect, preserve, and transport groundwater samples in accordance with the approved Sample Collection and Analysis Plan.

The Discharger shall determine groundwater flow rate and direction in the uppermost aquifer and in any zones of perched water and in any additional zone of saturation monitored pursuant to this Monitoring and Reporting Program, and report the results quarterly, including the times of highest and lowest elevations of the water levels in the wells.

Groundwater samples shall be collected from the point of compliance wells, background wells, and any additional wells added as part of the approved groundwater monitoring system. Samples shall be collected and analyzed for the monitoring parameters in accordance with the methods and frequency specified in Table I. All monitoring parameters shall be graphed so as to show historical trends at each well. The monitoring parameters shall also be evaluated annually with regards to the cation/anion balance, and the results shall be graphically presented using a Stiff diagram or a Piper graph. Samples for the constituents of concern specified in Table I shall be collected and analyzed in accordance with the methods listed in Table IV every five years.

2. Facility Monitoring

a. Facility Inspection

Annually, no later than 30 September and within 7 days following a major storm event, the Discharger shall conduct an inspection of the facility. The inspection shall assess damage to the drainage control system, groundwater monitoring equipment (including wells, etc.), and shall include the Standard Observations defined in the Standard Provisions and Reporting Requirements (Definition 24). Any necessary construction, maintenance, or repairs shall be

Aug. '97

MONITORING AND REPORTING PROGRAM NO. 99-124
SOUTHEAST REGIONAL SOLID WASTE COMMISSION
POST-CLOSURE MAINTENANCE
SOUTHEAST REGIONAL MUNICIPAL SOLID WASTE LANDFILL
FRESNO COUNTY

-6-

completed by 31 October and within 30 days of a major storm event. By 15 November of each year, and within 45 days of a major storm event, the Discharger shall submit an annual report describing the results of the inspection and the repair measures implemented.

b. Storm Events

The Discharger shall inspect all precipitation, diversion, and drainage facilities for damage within 7 days following *major storm events*. Necessary repairs shall be completed within 30 days of the inspection. The Discharger shall report any damage and subsequent repairs within 45 days of completion of the repairs.

The Discharger shall implement the above monitoring program on the effective date of this Program.

Ordered by:


GARY M. CARLTON, Executive Officer

17 September 1999

(Date)

DEE

MONITORING AND REPORTING PROGRAM No. 99-124
 SOUTHEAST REGIONAL SOLID WASTE COMMISSION
 POST-CLOSURE MAINTENANCE
 SOUTHEAST REGIONAL MUNICIPAL SOLID WASTE LANDFILL
 FRESNO COUNTY

-7-

TABLE I
GROUNDWATER DETECTION MONITORING PROGRAM

<u>Parameter</u>	<u>Units</u>	<u>Frequency</u>
Field Parameters		
Groundwater Elevation	Ft. & hundredths, M.S.L.	Quarterly
Temperature	°C	Quarterly
Specific Conductance	µmhos/cm	Quarterly
pH	pH units	Quarterly
Turbidity	Turbidity units	Quarterly
Monitoring Parameters		
Total Dissolved Solids (TDS)	mg/L	Semi-annual
Chloride	mg/L	Semi-annual
Carbonate	mg/L	Semi-annual
Bicarbonate	mg/L	Semi-annual
Nitrate - Nitrogen	mg/L	Semi-annual
Sulfate	mg/L	Semi-annual
Calcium	mg/L	Semi-annual
Magnesium	mg/L	Semi-annual
Potassium	mg/L	Semi-annual
Sodium	mg/L	Semi-annual
Volatile Organic Compounds (USEPA Methods 601/602, see Table III)	µg/L	Semi-annual
Constituents of Concern (see Table IV)		
Total Organic Carbon	mg/L	5 years
Inorganics (dissolved)	mg/L	5 years
Volatile Organic Compounds (USEPA Method 8260, extended list)	µg/L	5 years
Semi-Volatile Organic Compounds (USEPA Method 8270)	µg/L	5 years
Chlorophenoxy Herbicides (USEPA Method 8150)	µg/L	5 years
Organophosphorus Compounds (USEPA Method 8141)	µg/L	5 years

MONITORING AND REPORTING PROGRAM NO. 99-124
 SOUTHEAST REGIONAL SOLID WASTE COMMISSION
 POST-CLOSURE MAINTENANCE
 SOUTHEAST REGIONAL MUNICIPAL SOLID WASTE LANDFILL
 FRESNO COUNTY

-8-

TABLE II
LEACHATE DETECTION MONITORING PROGRAM

<u>Parameter</u>	<u>Units</u>	<u>Frequency</u>
Field Parameters		
Total Flow	Gallons	Quarterly
Flow Rate	Gallons/Day	Quarterly
Specific Conductance	µmhos/cm	Quarterly
pH	pH units	Quarterly
Monitoring Parameters		
Total Dissolved Solids (TDS)	mg/L	Quarterly
Chloride	mg/L	Quarterly
Sulfate	mg/L	Quarterly
Nitrate - Nitrogen	mg/L	Quarterly
Volatile Organic Compounds (USEPA Methods 601/602, see Table III)	µg/L	Quarterly
Constituents of Concern (see Table IV)		
Total Organic Carbon	mg/L	5 years
Carbonate	mg/L	5 years
Bicarbonate Alkalinity	mg/L	5 years
Inorganics (dissolved)	mg/L	5 years
Volatile Organic Compounds (USEPA Method 8260, extended list)	µg/L	5 years
Semi-Volatile Organic Compounds (USEPA Method 8270)	µg/L	5 years
Chlorophenoxy Herbicides (USEPA Method 8150)	µg/L	5 years
Organophosphorus Compounds (USEPA Method 8141)	µg/L	5 years

TABLE III
MONITORING PARAMETERS FOR DETECTION MONITORING

Constituents included in VOC:

USEPA Methods 601 and 602 Benzene
Bromodichloromethane
Bromoform (Tribromomethane)
Bromomethane
Carbon tetrachloride
Chlorobenzene
Chloroethane (Ethyl chloride)
Chloroform (Trichloromethane)
Chloromethane
Dibromochloromethane (Chlorodibromomethane)
o-Dichlorobenzene (1,2-Dichlorobenzene)
1,3-Dichlorobenzene
p-Dichlorobenzene (1,4-Dichlorobenzene)
Dichlorodifluoromethane
1,1-Dichloroethane (Ethylidene chloride)
1,2-Dichloroethane (Ethylene dichloride)
1,1 -Dichloroethylene (1,1 -Dichloroethene; Vinylidene chloride)
trans-1,2-Dichloroethylene (trans-1,2-Dichloroethene)
1,2-Dichloropropane (Propylene dichloride)
cis- 1,3-Dichloropropene
trans-1,3-Dichloropropene
Ethylbenzene
Methylene chloride (Dichloromethane)
1,1,2,2-Tetrachloroethane
Tetrachloroethylene (Tetrachloroethene; Perchloroethylene)
Toluene
1,1,1-Trichloroethane (Methylchloroform)
1,1,2-Trichloroethane
Trichloroethylene (Trichloroethene)
Trichlorofluoromethane (CFC- 11)
Vinyl chloride
Xylene(s)

TABLE IV

CONSTITUENTS OF CONCERN & APPROVED USEPA ANALYTICAL METHODS

Inorganics (dissolved):

USEPA Method

Aluminum	6010
Antimony	6010
Barium	6010
Beryllium	6010
Cadmium	6010
Chromium	6010
Cobalt	6010
Copper	6010
Silver	6010
Tin	6010
Vanadium	6010
Zinc	6010
Iron	6010
Manganese	6010
Arsenic	7061
Lead	7421
Mercury	7470
Nickel	7520
Selenium	7741
Thallium	7841
Cyanide	9010
Sulfide	9030

Volatile Organic Compounds:

USEPA Method 8260

Acetone
Acetonitrile (Methyl cyanide)
Acrolein
Acrylonitrile
Allyl chloride (3-Chloropropene)
Benzene
Bis(2-ethylhexyl) phthalate
Bromochloromethane (Chlorobromomethane)
Bromodichloromethane (Dibromochloromethane)
Bromoform (Tribromomethane)
Carbon disulfide
Carbon tetrachloride
Chlorobenzene
Chloroethane (Ethyl chloride)
Chloroform (Trichloromethane)
Chloroprene

TABLE IV
CONSTITUENTS OF CONCERN & APPROVED USEPA ANALYTICAL METHODS
(Continued)

Dibromochloromethane (Chlorodibromomethane)
1,2-Dibromo-3-chloropropane (DBCP)
1,2-Dibromoethane (Ethylene dibromide; EDB)
o-Dichlorobenzene (1,2-Dichlorobenzene)
m-Dichlorobenzene (1,3-Dichlorobenzene)
p-Dichlorobenzene (1,4-Dichlorobenzene)
trans- 1,4-Dichloro-2-butene
Dichlorodifluoromethane (CFC 12)
1,1 -Dichloroethane (Ethylidene chloride)
1,2-Dichloroethane (Ethylene dichloride)
1,1 -Dichloroethylene (1, 1-Dichloroethene; Vinylidene chloride)
cis- 1,2-Dichloroethylene (cis- 1,2-Dichloroethene)
trans- 1,2-Dichloroethylene (trans- 1,2-Dichloroethene)
1,2-Dichloropropane (Propylene dichloride)
1,3-Dichloropropane (Trimethylene dichloride)
2,2-Dichloropropane (Isopropylidene chloride)
1,1 -Dichloropropene
cis- 1,3-Dichloropropene
trans- 1,3-Dichloropropene
Ethylbenzene
Hexachlorobutadiene
2-Hexanone (Methyl butyl ketone)
Isobutyl alcohol
Isodrin
Methacrylonitrile
Methyl bromide (Bromomethane)
Methyl chloride (Chloromethane)
Methyl ethyl ketone (MEK; 2-Butanone)
Methyl iodide (Iodomethane)
Methyl methacrylate
4-Methyl-2-pentanone (Methyl isobutyl ketone)
Methylene bromide (Dibromomethane)
Methylene chloride (Dichloromethane)
Naphthalene
Propionitrile (Ethyl cyanide)
Styrene
1,1,1,2-Tetrachloroethane
1,1,2,2-Tetrachloroethane
Tetrachloroethylene (Tetrachloroethene; Perchloroethylene; PCE)
Toluene 1,2,4-Trichlorobenzene
1,1,1 -Trichloroethane, Methylchloroform
1,1,2-Trichloroethane

TABLE IV

CONSTITUENTS OF CONCERN & APPROVED USEPA ANALYTICAL METHODS
(Continued)

Trichloroethylene (Trichloroethene; TCE)
Trichlorofluoromethane (CFC- 11)
1,2,3-Trichloropropane
Vinyl acetate
Vinyl chloride (Chloroethene)
Xylene (total)

Semi-Volatile Organic Compounds:

USEPA Method 8270 - base, neutral, & acid extractables

Acenaphthene
Acenaphthylene
Acetophenone
2-Acetylaminofluorene (2-AAF)
Aldrin
4-Aminobiphenyl
Anthracene
Benzo[a]anthracene (Benzanthracene)
Benzo[b]fluoranthene
Benzo[k]fluoranthene
Benzo[g,h,i]perylene
Benzo[a]pyrene
Benzyl alcohol
alpha-BHC
beta-BHC
delta-BHC
gamma-BHC (Lindane)
Bis(2-chloroethoxy)methane
Bis(2-chloroethyl) ether (Dichloroethyl ether)
Bis(2-chloro-1-methylethyl) ether (Bis(2-chloroisopropyl) ether; DCIP)
4-Bromophenyl phenyl ether
Butyl benzyl phthalate (Benzyl butyl phthalate)
Chlordane
p-Chloroaniline
Chlorobenzilate
p-Chloro-m-cresol (4-Chloro-3-methylphenol)
2-Chloronaphthalene
2-Chlorophenol
4-Chlorophenyl phenyl ether
Chrysene
o-Cresol (2-methylphenol)
m-Cresol (3-methylphenol)

TABLE IV
CONSTITUENTS OF CONCERN & APPROVED USEPA ANALYTICAL METHODS
(Continued)

p-Cresol (4-methylphenol)
4,4'-DDD
4,4'-DDE
4,4'-DDT
Diallate
Dibenz[a,h]anthracene
Dibenzofuran
Di-n-butyl phthalate
o-Dichlorobenzene (1,2-Dichlorobenzene)
m-Dichlorobenzene (1,3-Dichlorobenzene)
p-Dichlorobenzene (1,4-Dichlorobenzene)
3,3'-Dichlorobenzidine
2,4-Dichlorophenol
2,6-Dichlorophenol
Dieldrin
Diethyl phthalate
p-(Dimethylamino)azobenzene
7,12-Dimethylbenz[a]anthracene
3,3'-Dimethylbenzidine
2,4-Dimethylphenol (m-Xylenol)
Dimethyl phthalate
m-Dinitrobenzene
4,6-Dinitro-o-cresol (4,6-Dinitro-2-methylphenol)
2,4-Dinitrophenol
2,4-Dinitrotoluene
2,6-Dinitrotoluene
Di-n-octyl phthalate
Diphenylamine
Endosulfan I
Endosulfan II
Endosulfan sulfate
Endrin
Endrin aldehyde
Ethyl methacrylate
Ethyl methanesulfonate
Famphur
Fluoranthene
Fluorene
Heptachlor
Heptachlor epoxide
Hexachlorobenzene
Hexachlorobutadiene

TABLE IV
CONSTITUENTS OF CONCERN & APPROVED USEPA ANALYTICAL METHODS
(Continued)

Hexachlorocyclopentadiene
Hexachloroethane
Hexachloropropene
Indeno(1,2,3-c,d)pyrene
Isophorone
Isosafrole
Kepone
Methapyrilene
Methoxychlor
3-Methylcholanthrene
Methyl methanesulfonate
2-Methylnaphthalene
Naphthalene
1,4-Naphthoquinone
1-Naphthylamine
2-Naphthylamine
o-Nitroaniline (2-Nitroaniline)
m-Nitroaniline (3-Nitroaniline)
p-Nitroaniline (4-Nitroaniline)
Nitrobenzene
o-Nitrophenol (2-Nitrophenol)
p-Nitrophenol (4-Nitrophenol)
N-Nitrosodi-n-butylamine (Di-n-butylnitrosamine)
N-Nitrosodiethylamine (Diethylnitrosamine)
N-Nitrosodimethylamine (Dimethylnitrosamine)
N-Nitrosodiphenylamine (Diphenylnitrosamine)
N-Nitrosodipropylamine (N-Nitroso-N-dipropylamine; Di-n-propylnitrosamine)
N-Nitrosomethylethylamine (Methylethylnitrosamine)
N-Nitrosopiperidine
N-Nitrosopyrrolidine
5-Nitro-o-toluidine
Pentachlorobenzene
Pentachloronitrobenzene (PCNB)
Pentachlorophenol
Phenacetin
Phenanthrene
Phenol
p-Phenylenediamine
Polychlorinated biphenyls (PCBs; Aroclors)
Pronamide
Pyrene
Safrole

TABLE IV
CONSTITUENTS OF CONCERN & APPROVED USEPA ANALYTICAL METHODS
(Continued)

1,2,4,5-Tetrachlorobenzene
2,3,4,6-Tetrachlorophenol
o-Toluidine
Toxaphene
1,2,4-Trichlorobenzene
2,4,5-Trichlorophenol
1,2,4,6-Trichlorophenol
0,0,0-Triethyl phosphorothioate
sym-Trinitrobenzene

Chlorophenoxy Herbicides:

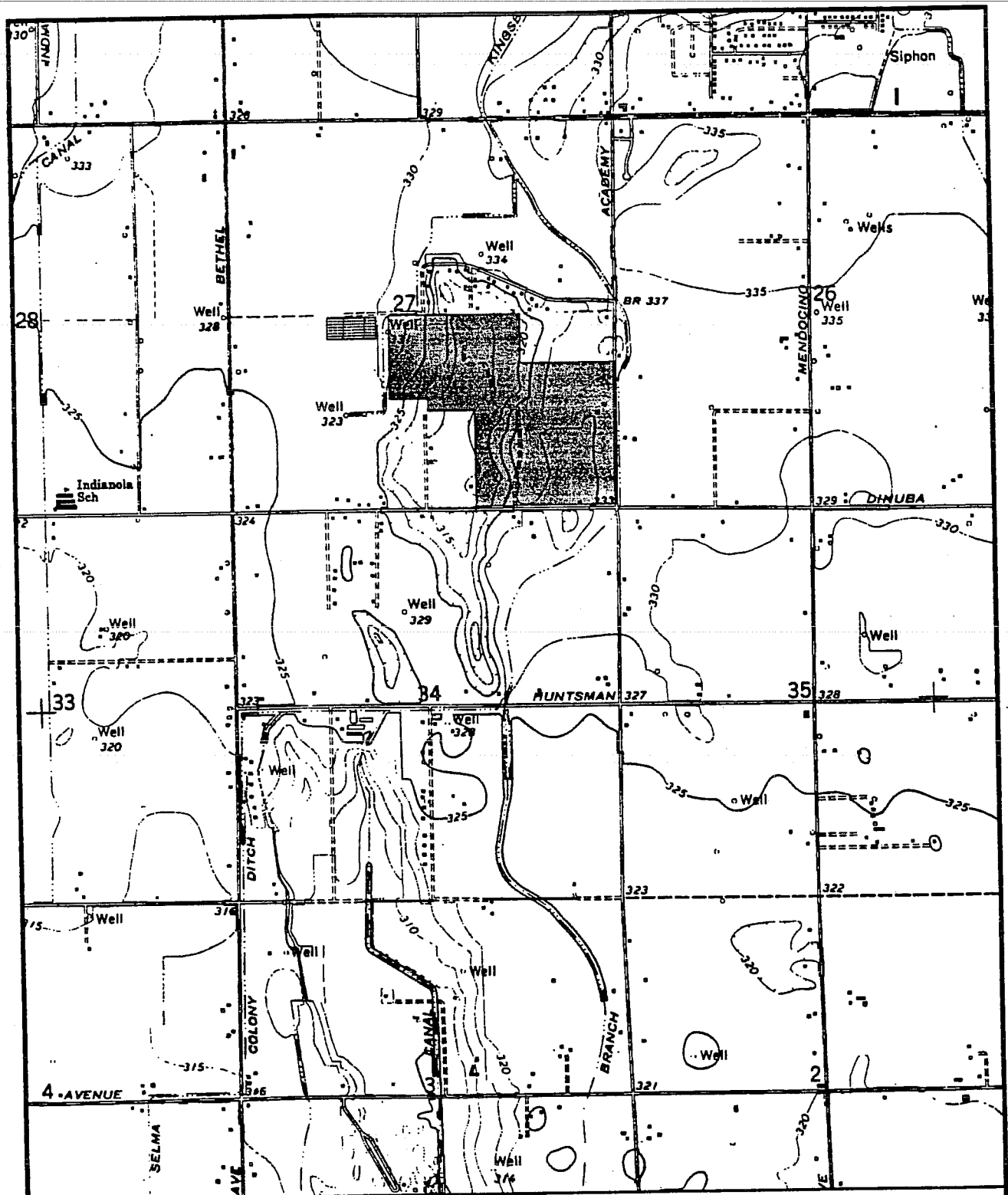
USEPA Method 8150

2,4-D (2,4-Dichlorophenoxyacetic acid)
Dinoseb (DNBP; 2-sec-Butyl-4,6-dinitrophenol)
Silvex (2,4,5-Trichlorophenoxypropionic acid; 2,4,5-TP)
2,4,5-T (2,4,5-Trichlorophenoxyacetic acid)

Organophosphorus Compounds:

USEPA Method 8141

0,0-Diethyl 0-2-pyrazinyl phosphorothioate (Thionazin)
Dimethoate
Disulfoton
Methyl parathion (Parathion methyl)
Parathion
Phorate



ATTACHMENT A

ORDER NO. _____

SOUTHEAST REGIONAL SOLID WASTE COMMISSION
SOUTHEAST REGIONAL MUNICIPAL SOLID WASTE LANDFILL
FRESNO COUNTY



1" = 2000'

Selma, CA U.S.G.S. 7 1/2 Min. Quadrangle