

Meadow Lakes

**Generator
Replacement
Project**

Pictorial Diagram

11-2012

County of Fresno



Outside View of the Building



Outside building Exhaust View. New Exhaust system must contain a spark arrestor per US Forestry Service requirement.



Vapor Propane Entrance 3/4"

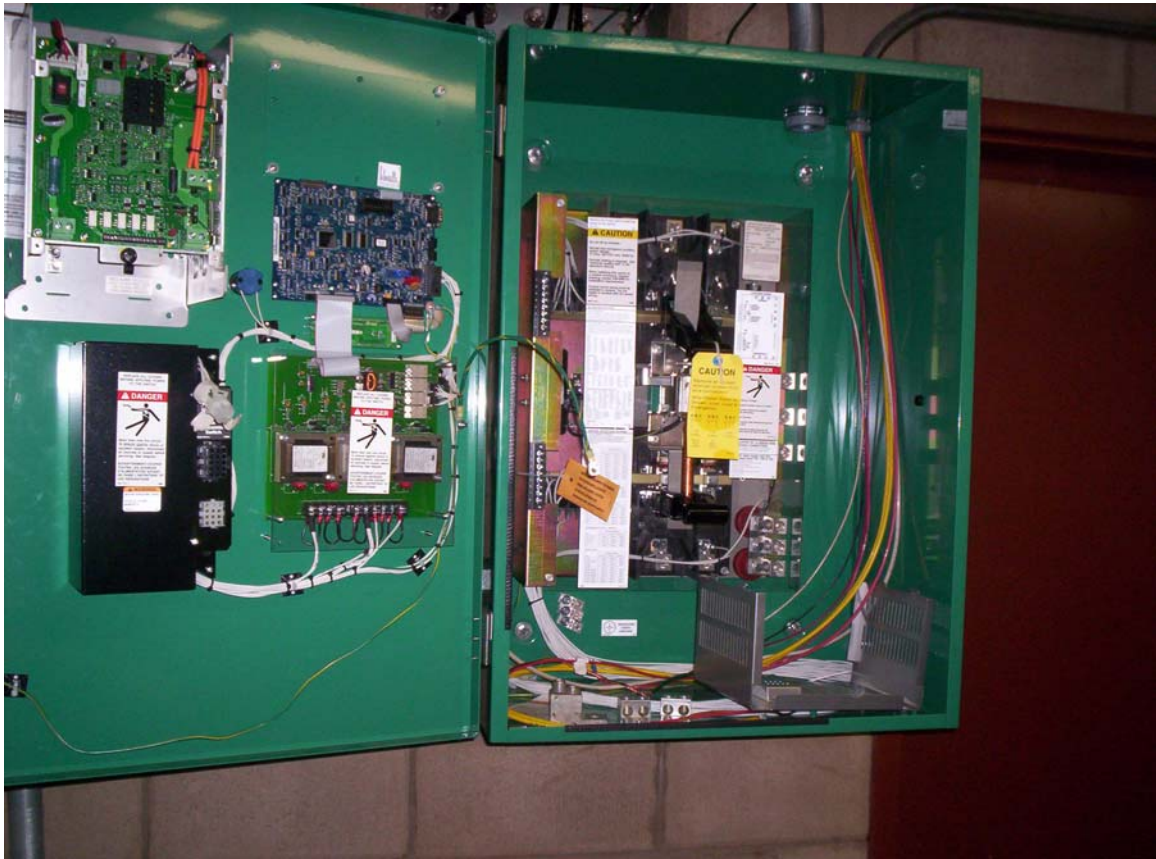


Existing Generator to be replaced by the project.



Transfer Switch 1" Conduit with Flex connecting to existing Generator.
To be replaced as part of the project.





New Transfer Switch Installed October 2012
Model Number OTPC-10529809 SN A120296297





Ventilation Inlet duct above Generator



Vapor Propane connection to existing Generator with Shutoff Valve $\frac{3}{4}$ "



5 Existing Intake Ventilation Ducts Placed around the Room for Air Intake



Site Door Entrance Access.