

SJVIA: Access to Care

San Joaquin Valley Insurance Authority
Network Review

August 2022



Network Value to SJVIA



94.7%

In-Network Paid %

59.5%

In-Network Discount %

Based on the geographic distribution of employees, Anthem has a **63%** cost of care advantage over the closest competitor

We are proud to focus on

Total Care**

33.8%

of Members with TC Relationship

60%*

of Total Dollars flow through value-based Contracts

Which equates to savings of

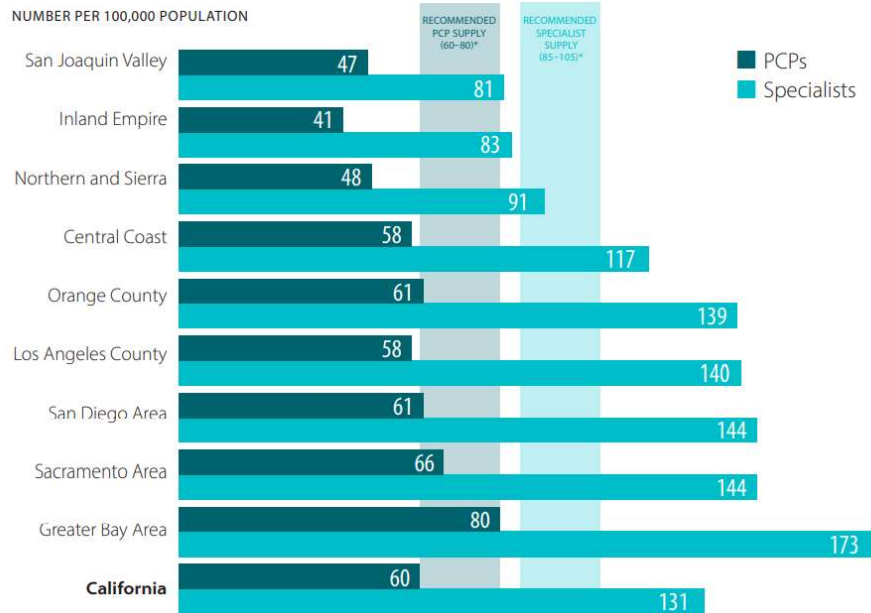
\$30m

*Anthem book of business

**Total Care Providers work under value-based payments and are held responsible for coordinating high-quality, cost-effective care.

Access Statistics by County

Primary Care Physicians and Specialists, by Region California, 2020



- Greater San Joaquin Valley falls below access recommendations, according to the California Physician's Almanac.

Anthem Blue Cross Provider Counts for County of Tulare

Primary Care Physicians	Internist	OB/GYN	Pediatrician	MH/SA Providers	Other Specialist Providers	Urgent Care Facilities	Outpatient Facility	MH/SA Facility	Hospitals
354	318	93	170	187	1215	6	1	1	5

Anthem Blue Cross Provider Counts for County of Fresno

Primary Care Physicians	Internist	OB/GYN	Pediatrician	MH/SA Providers	Other Specialist Providers	Urgent Care Facilities	Outpatient Facility	MH/SA Facility	Hospitals
616	977	188	386	381	4106	21	3	6	11

Count of Provider Class by Specialty

Tulare County Provider Types	# of Providers
ACUTE PSYCHIATRIC HOSPITAL	1
Acute/General Hospital	4
Ambulatory Surgery Center, Free Standing	9
Applied Behavior Analysis Group	3
Behavioral Health - Group/Practice	26
Hemodialysis Center, Freestanding	7
Home Health Agency, Hospital-based	1
Home Infusion Therapy	2
HOSPICE	3
INDEPENDENT LAB	719
Medical Group	722
MEDICAL SPECIALIST	1054
OTHER PROFESSIONAL SPECIALIST	614
OUTPATIENT PSYCHIATRIC FACILITY	1
PB DIAG IMAGING CNTR	6
PCP	806
Physical Rehabilitation Hospital, Inpatient	1
Primary Care - Group/Practice	1
Rural Health Clinic, Free Standing	1
Rural Health Clinic, Physician Based	3
Skilled Nursing Facility, Freestanding	13
Skilled Nursing Facility, Hospital-based	2
State Agency, Medicaid or HIPD Provider	1
Supplier - Durable Medical Equipment	271
Supplier - Orthotics & Prosthetics	2
Veterans Administration Professional Provider	2
Grand Total	4275

Fresno County Provider Type	# of Providers
ACUTE PSYCHIATRIC HOSPITAL	1
Acute/General Hospital	17
Adult Family Care Homes	1
Ambulatory Surgery Center, Free Standing	22
Applied Behavior Analysis Group	14
Behavioral Health - Group/Practice	82
FEDERALLY QUALIFIED HEALTH CENTER (FQHC)	2
Hemodialysis Center, Freestanding	21
Home Health Agency, Free Standing	18
Home Health Agency, Hospital-based	4
Home Infusion Therapy	1
HOSPICE	7
INDEPENDENT LAB	143
Medical Group	2453
MEDICAL SPECIALIST	4552
OPTOMETRY - Group/Practice	1
OTHER PROFESSIONAL SPECIALIST	2240
OUTPATIENT PSYCHIATRIC FACILITY	2
PB CLINICAL LAB	3
PB DIAG IMAGING CNTR	12
PCP	2679
PHARMACY	1
Psychiatric Health Facility	1
RESIDENTIAL TREATMENT CENTER	5
RETAIL HEALTH CLINIC	1
Rural Health Clinic, Physician Based	3
Skilled Nursing Facility, Freestanding	25
Skilled Nursing Facility, Hospital-based	2
Sleep Study Laboratory	2
State Agency, Medicaid or HIPD Provider	66
Supplier - Durable Medical Equipment	285
Supplier - Orthotics & Prosthetics	6
Urgent Care Medical Clinic	4
Veterans Administration Hospital	1
Veterans Administration Professional Provider	7
Grand Total	12684

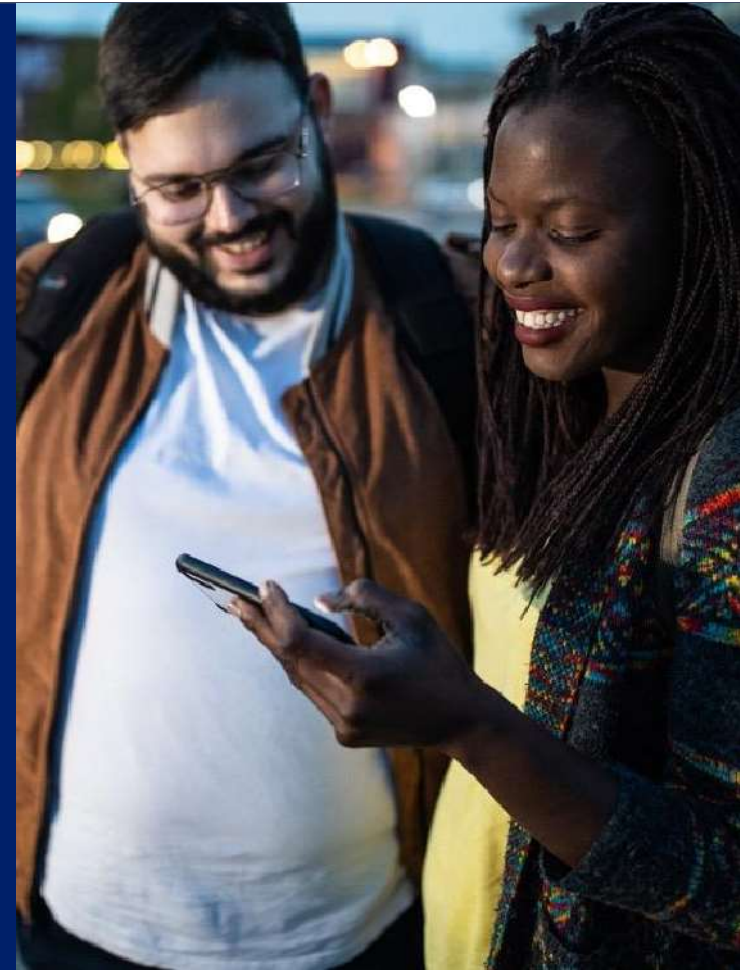
Hospital Contract Review by County

Column1	Column2
County of Tulare: Major Hospitals	Lapse in coverage?
ADVENTIST HEALTH - Including satellite campuses.	No
SIERRA VIEW DISTRICT HOSPITAL	No
KAWEAH DELTA MEDICAL CENTER - Including satellite campuses.	No

County of Fresno: Hospitals	Lapse in coverage?
SELMA COMMUNITY HOSPITAL	No
SAINT AGNES MEDICAL CENTER FRESNO - Including satellite campuses.	No
FRESNO SURGICAL HOSPITAL	No
COMMUNITY REGIONAL MEDICAL CENTERS - Including satellite campuses.	No
ADVENTIST HEALTH - Including satellite campuses.	No
COALINGA MEDICAL CENTER	No
CORONA REGIONAL MEDICAL CENTER	No

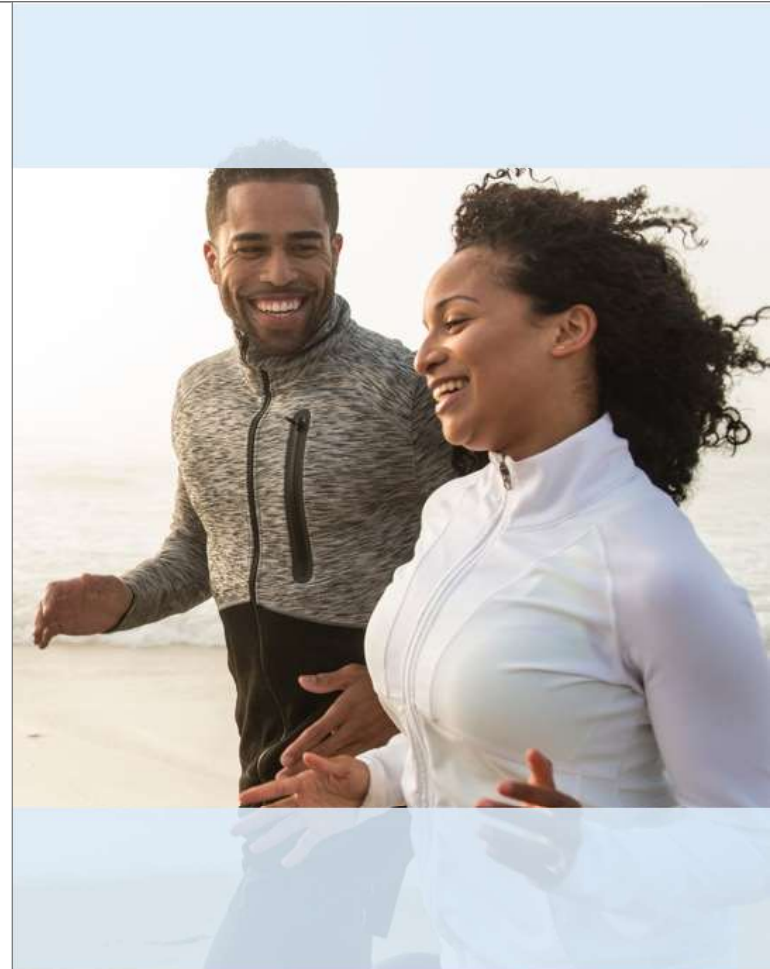
Anthem Insights

- Plan Design Consideration
- Virtual Primary Care



Plan Design Considerations

- Adding in specific language to allow members to see an out of network provider at the in network benefit level when a network provider isn't available within 15 miles of their home.
- Adding in Virtual Primary Care



SJVIA: Virtual Primary Care at no/low cost*



Comprehensive primary care for overall health. With the Sydney Health app, employees can meet their dedicated care team who will understand their health goals and create interactive care plans to manage their overall health and chronic conditions. As a health advisor in their pocket, the care team is also available for your employee's common health questions.



On-demand care at low or no cost. With the Sydney Health app, your employees can visit with a doctor 24/7, on-demand, with no appointment needed, and address day-to-day needs like prescription refills. With affordable cost and improved accessibility, more people can get the right care at the right time.



Empowered by personalized experiences. Your employees will receive personalized insights and recommendations to make more-informed decisions about their health. These insights are based on millions of medical records of people like them. In addition, we build your employees their own unique health blueprint, helping doctors provide continuity of care across your employees' healthcare journeys.

*Powered by K Health.

24/7 access to doctors

The doctor chat feature gives your employees control over their health with on-demand access to quality care for primary, preventive, and urgent care needs.

Powered by our partnership with K Health



Connect with a doctor within 15 minutes – no appointment needed



Available nationwide



Text-based, with video and voice if needed



No or low cost, depending on health plan



Available 24 hours a day, 7 days a week, 365 days a year



Preventive care, including wellness visits and establishing care plans with a doctor

85% of visits resolve the member's need.*

They don't have to go to a doctor's office in person.

**Thank you for
allowing us to be your
trusted healthcare partner.**

**We look forward to our continued
collaboration as we confidently develop
forward-thinking solutions to accomplish
your goals.**

