



P. O. Box 1538
Rancho Cordova, CA 95741

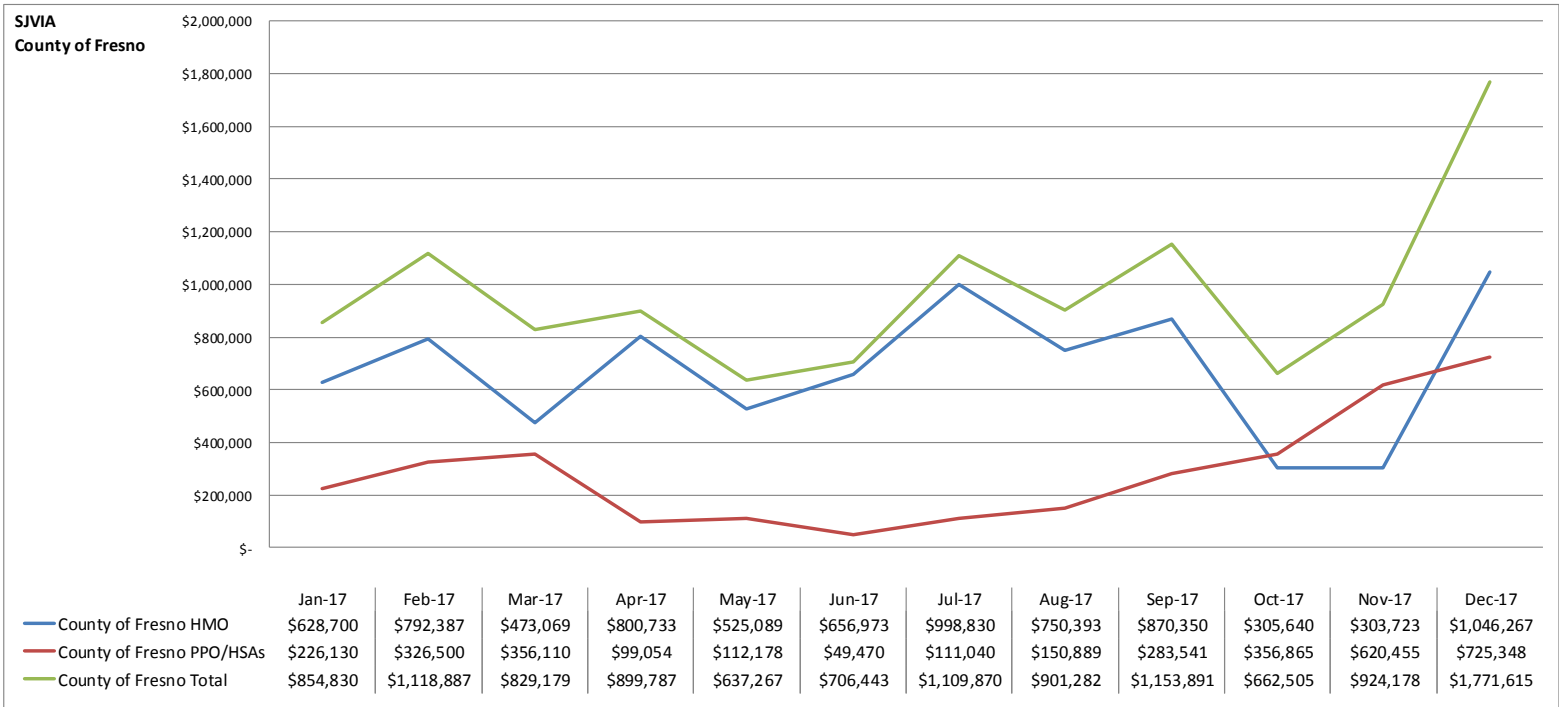
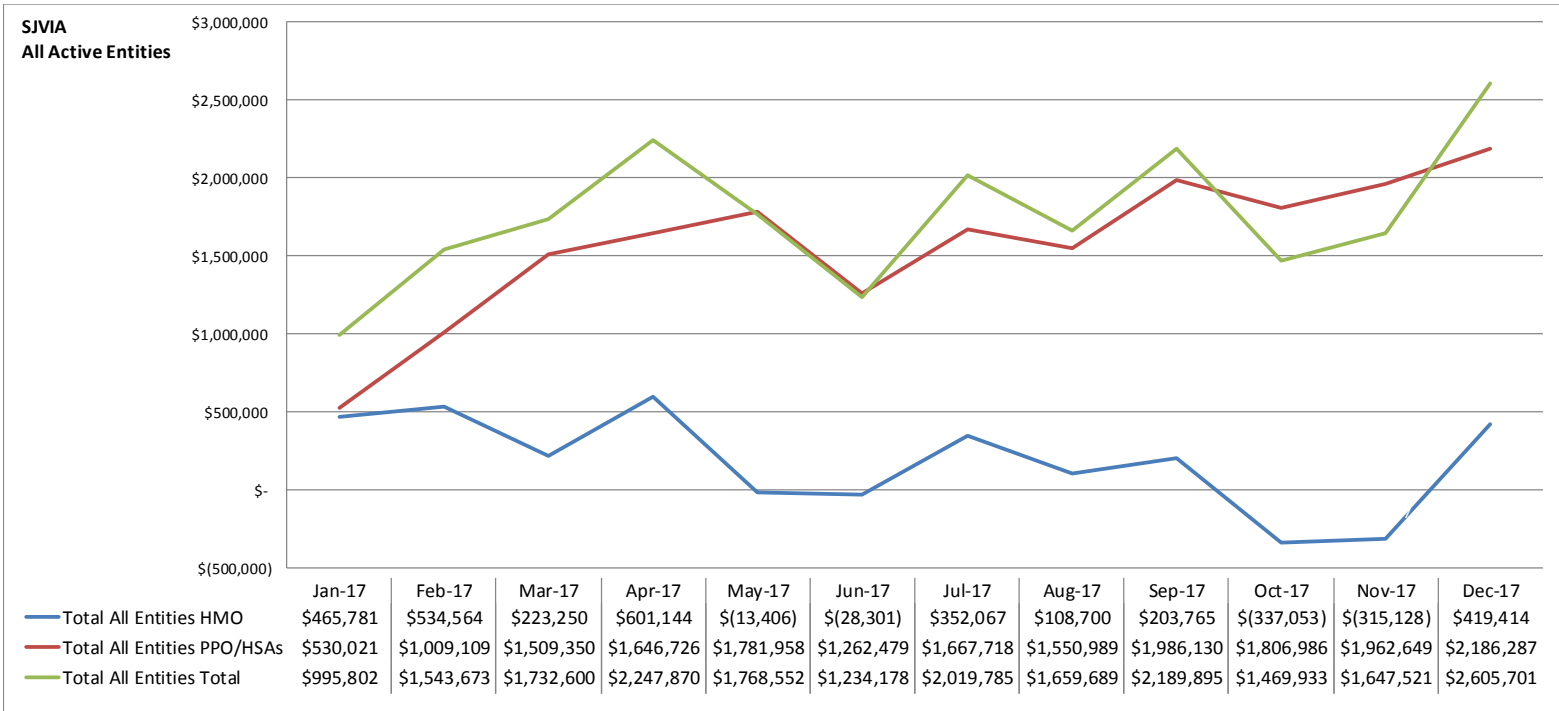
916 859-4900
916 859-7167 fax GS
www.keenan.com
License No. 0451271

February 23, 2018

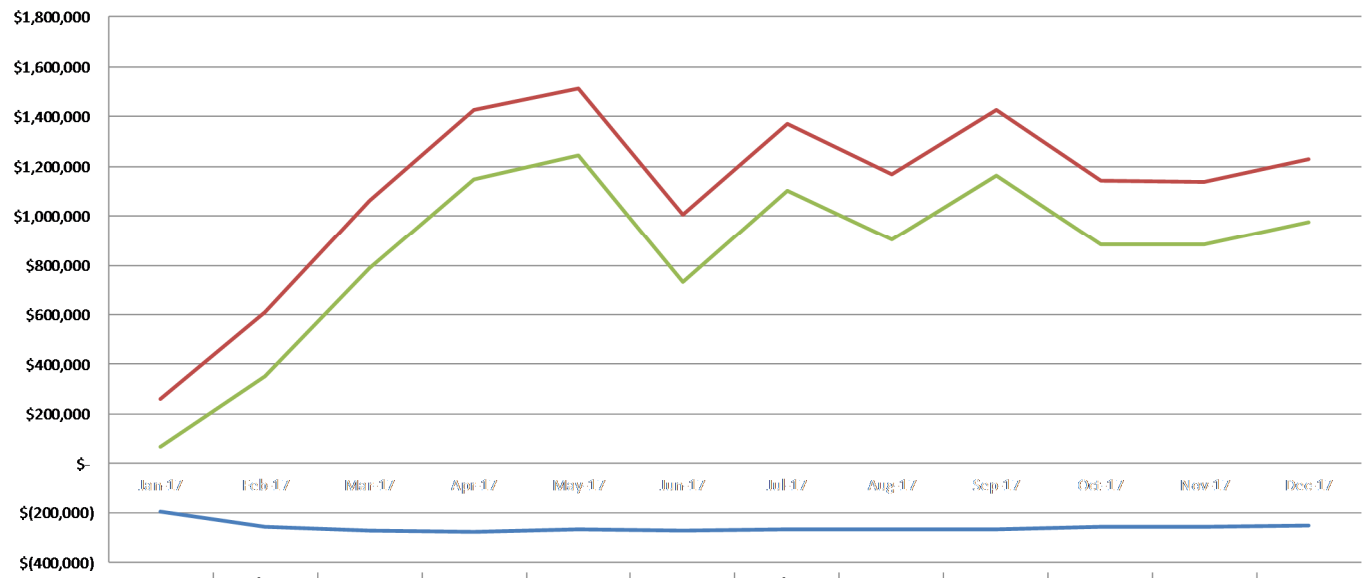
**SJVIA Board Meeting: Consultant's Report on Medical, Dental, and Vision Experience
Through December 2017**

The following pages provide a summary of the plan experience through December 2017. Keenan's last report to the SJVIA Board was based on claim experience through October 2017. The Anthem self-funded medical plan showed a surplus of \$1,469,937 which increased to \$1,647,521 for November and to \$2,605,706 through December. The EPO Plan starting December 18, 2017 for the County of Fresno contributed to the increase in the surplus position. While December premium for the EPO is shown, no paid claims against the premium was realized.

Please note minor differences may exist in the totals due to rounding.

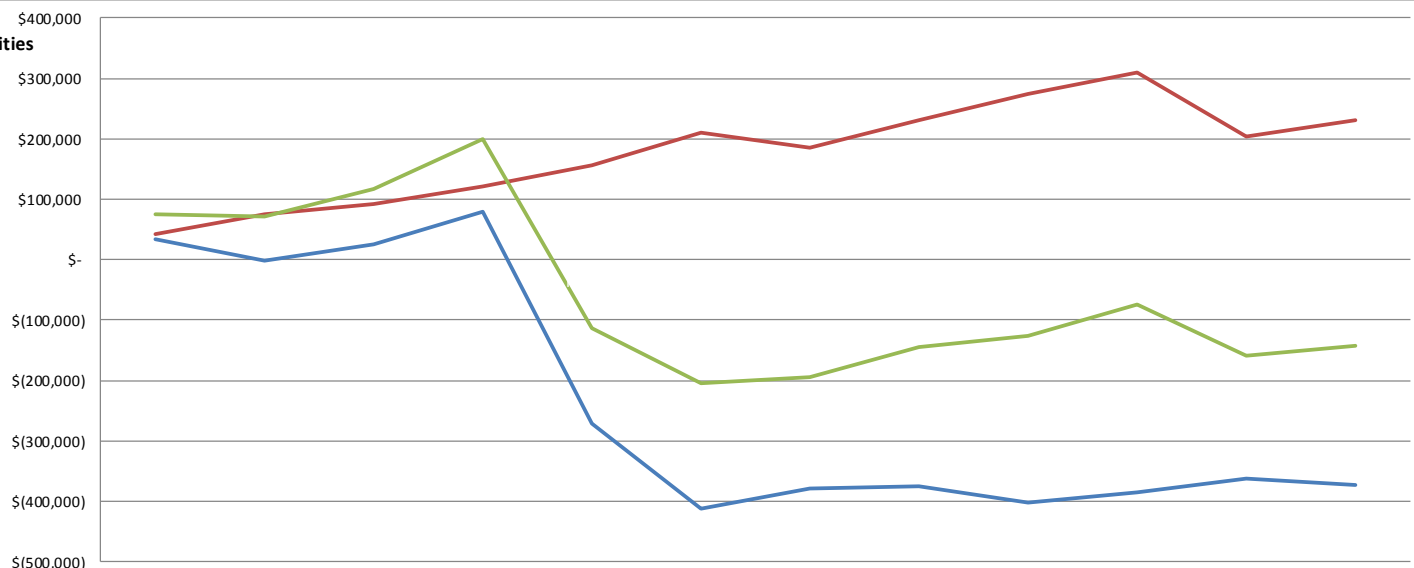


**SJIA
County of Tulare**



| | Jan-17 | Feb-17 | Mar-17 | Apr-17 | May-17 | Jun-17 | Jul-17 | Aug-17 | Sep-17 | Oct-17 | Nov-17 | Dec-17 |
|---------------------------|-------------|-------------|-------------|-------------|-------------|-------------|-------------|-------------|-------------|-------------|-------------|-------------|
| County of Tulare HMO* | \$(196,381) | \$(255,050) | \$(274,176) | \$(277,836) | \$(267,845) | \$(271,778) | \$(267,307) | \$(265,802) | \$(264,993) | \$(257,613) | \$(256,147) | \$(253,888) |
| County of Tulare PPO/HSAs | \$262,651 | \$608,039 | \$1,061,791 | \$1,426,608 | \$1,512,991 | \$1,004,017 | \$1,371,325 | \$1,169,478 | \$1,427,927 | \$1,140,171 | \$1,138,651 | \$1,229,914 |
| County of Tulare Total | \$66,270 | \$352,989 | \$787,615 | \$1,148,772 | \$1,245,146 | \$732,239 | \$1,104,018 | \$903,676 | \$1,162,934 | \$882,558 | \$882,504 | \$976,026 |

**SJIA
All Other Entities**



| | Jan-17 | Feb-17 | Mar-17 | Apr-17 | May-17 | Jun-17 | Jul-17 | Aug-17 | Sep-17 | Oct-17 | Nov-17 | Dec-17 |
|--------------------|----------|-----------|-----------|-----------|-------------|-------------|-------------|-------------|-------------|-------------|-------------|-------------|
| All Other HMO | \$33,462 | \$(2,773) | \$24,357 | \$78,247 | \$(270,650) | \$(413,496) | \$(379,456) | \$(375,891) | \$(401,592) | \$(385,080) | \$(362,704) | \$(372,965) |
| All Other PPO/HSAs | \$41,240 | \$74,570 | \$91,449 | \$121,064 | \$156,789 | \$208,992 | \$185,353 | \$230,622 | \$274,662 | \$309,950 | \$203,543 | \$231,025 |
| All Other Total | \$74,702 | \$71,797 | \$115,806 | \$199,311 | \$(113,861) | \$(204,504) | \$(194,103) | \$(145,269) | \$(126,930) | \$(75,130) | \$(159,161) | \$(141,940) |