



**San Joaquin Valley Insurance Authority (SJVIA)
Anthem Blue Cross Premium and Claims Report as of August 2018
All Districts Combined - All Medical**

MONTH-YEAR	ENROLLED	FUNDING / PREMIUM	CLAIMS EXPENSE						SURPLUS / (DEFICIT)	AVERAGE CLAIM COST PEPM	TOTAL EXPENSE LOSS RATIO
			MEDICAL	CAPITATION	RX	FIXED	POOLED CLAIMS	TOTAL EXPENSE			
Jan-16	7,415	\$6,292,296	\$2,587,064	\$1,131,645	\$1,422,769	\$564,686	\$0	\$5,706,164	\$586,132	\$693.39	90.7%
Feb-16	7,420	\$6,277,578	\$3,336,635	\$1,127,940	\$1,548,636	\$564,920	\$0	\$6,578,131	-\$300,553	\$810.41	104.8%
Mar-16	7,425	\$6,276,715	\$3,146,223	\$1,123,252	\$1,661,305	\$565,222	\$0	\$6,496,002	-\$219,287	\$798.76	103.5%
Apr-16	7,449	\$6,279,991	\$3,245,888	\$1,121,050	\$1,473,038	\$566,444	\$0	\$6,406,420	-\$126,429	\$783.99	102.0%
May-16	7,426	\$6,262,001	\$3,537,933	\$1,120,362	\$1,531,196	\$564,703	\$0	\$6,754,195	-\$492,194	\$833.49	107.9%
Jun-16	7,445	\$6,268,571	\$3,073,560	\$1,126,152	\$1,533,858	\$566,205	\$0	\$6,299,775	-\$31,205	\$770.12	100.5%
Jul-16	7,458	\$6,269,622	\$3,330,433	\$1,156,189	\$1,543,742	\$567,027	\$0	\$6,597,392	-\$327,769	\$808.58	105.2%
Aug-16	7,450	\$6,260,578	\$3,767,851	\$1,149,168	\$1,639,401	\$566,216	-\$75,525	\$7,047,112	-\$786,534	\$869.92	112.6%
Sep-16	7,434	\$6,240,249	\$2,836,114	\$1,149,991	\$1,504,675	\$565,162	\$0	\$6,055,943	\$184,306	\$738.60	97.0%
Oct-16	7,412	\$6,222,734	\$3,681,077	\$1,146,283	\$1,549,736	\$563,513	\$0	\$6,940,609	-\$717,875	\$860.37	111.5%
Nov-16	7,394	\$6,205,893	\$3,879,920	\$1,142,122	\$1,531,147	\$561,716	-\$45,491	\$7,069,413	-\$863,520	\$880.13	113.9%
Dec-16	7,377	\$6,184,827	\$4,806,350	\$1,103,713	\$1,576,951	\$560,212	-\$746,471	\$7,300,755	-\$1,115,928	\$913.72	118.0%
Jan-17	7,224	\$6,815,134	\$2,700,833	\$995,935	\$1,572,397	\$550,166	\$0	\$5,819,332	\$995,802	\$729.40	85.4%
Feb-17	7,200	\$6,787,681	\$3,258,550	\$991,948	\$1,441,160	\$548,152	\$0	\$6,239,810	\$547,871	\$790.51	91.9%
Mar-17	7,179	\$6,761,387	\$3,322,923	\$987,343	\$1,715,926	\$546,268	\$0	\$6,572,459	\$188,928	\$839.42	97.2%
Apr-17	7,013	\$6,592,653	\$3,063,951	\$977,033	\$1,503,577	\$532,822	\$0	\$6,077,383	\$515,271	\$790.61	92.2%
May-17	7,053	\$6,615,501	\$3,931,378	\$977,081	\$1,650,758	\$535,601	\$0	\$7,094,819	-\$479,318	\$929.99	107.2%
Jun-17	7,172	\$6,728,288	\$3,913,208	\$972,474	\$1,831,804	\$545,175	\$0	\$7,262,662	-\$534,374	\$936.63	107.9%
Jul-17	7,194	\$6,722,354	\$2,828,118	\$991,172	\$1,575,369	\$546,146	\$0	\$5,940,805	\$781,549	\$749.88	88.4%
Aug-17	7,188	\$6,713,191	\$3,679,724	\$988,909	\$1,864,173	\$545,668	\$0	\$7,078,475	-\$365,284	\$908.85	105.4%
Sep-17	7,198	\$6,710,435	\$2,832,780	\$985,584	\$1,817,473	\$546,161	\$0	\$6,181,998	\$528,436	\$782.97	92.1%
Oct-17	7,160	\$6,672,823	\$4,137,958	\$979,410	\$1,810,591	\$543,054	-\$75,682	\$7,395,330	-\$722,508	\$957.02	110.8%
Nov-17	7,193	\$6,689,463	\$3,302,717	\$974,921	\$1,692,587	\$545,451	-\$1,520	\$6,514,156	\$175,308	\$829.79	97.4%
Dec-17	7,112	\$6,646,325	\$2,856,439	\$976,822	\$1,642,821	\$847,464	\$0	\$6,323,546	\$322,779	\$769.98	95.1%
Jan-18	6,958	\$6,521,019	\$2,767,312	\$1,303	\$1,592,760	\$624,786	\$0	\$4,986,161	\$1,534,858	\$626.81	76.5%
Feb-18	6,955	\$6,519,818	\$2,974,163	\$392	\$1,519,979	\$624,534	\$0	\$5,119,068	\$1,400,750	\$646.23	78.5%
Mar-18	6,953	\$6,512,291	\$5,141,710	\$0	\$1,735,958	\$624,197	\$0	\$7,501,865	-\$989,574	\$989.17	115.2%
Apr-18	6,935	\$6,483,938	\$3,792,571	\$0	\$1,588,684	\$622,237	\$0	\$6,003,492	\$480,446	\$775.96	92.6%
May-18	6,963	\$6,487,562	\$4,141,750	\$0	\$1,713,470	\$624,258	\$0	\$6,479,478	\$8,084	\$840.90	99.9%
Jun-18	6,992	\$6,505,413	\$3,695,905	\$0	\$1,604,344	\$627,108	\$0	\$5,927,357	\$578,056	\$758.04	91.1%
Jul-18	7,002	\$6,502,601	\$3,881,831	\$0	\$1,767,041	\$628,080	-\$29,545	\$6,247,407	\$255,195	\$802.53	96.1%
Aug-18	6,995	\$6,491,104	\$4,156,725	\$0	\$1,852,242	\$627,065	-\$64,707	\$6,571,324	-\$80,220	\$849.79	101.2%
2015	7,857	\$73,183,304	\$43,280,340	\$15,057,894	\$18,042,745	\$7,747,452	-\$335,568	\$83,792,863	-\$10,609,560	\$806.54	114.5%
2016	7,425	\$75,041,054	\$41,229,048	\$13,597,868	\$18,516,456	\$6,776,025	-\$867,487	\$79,251,910	-\$4,210,855	\$813.38	105.6%
2017	7,157	\$80,455,233	\$39,828,579	\$11,798,633	\$20,118,638	\$6,832,128	-\$77,202	\$78,500,774	\$1,954,459	\$834.46	97.6%
2018 YTD	6,969	\$52,023,746	\$30,551,967	\$1,695	\$13,374,478	\$5,002,264	-\$94,252	\$48,836,152	\$3,187,595	\$786.22	93.9%
Current 12 Months	7,035	\$78,742,792	\$43,681,861	\$3,918,432	\$20,337,950	\$7,484,393	-\$171,454	\$75,251,182	\$3,491,610	\$802.77	95.6%

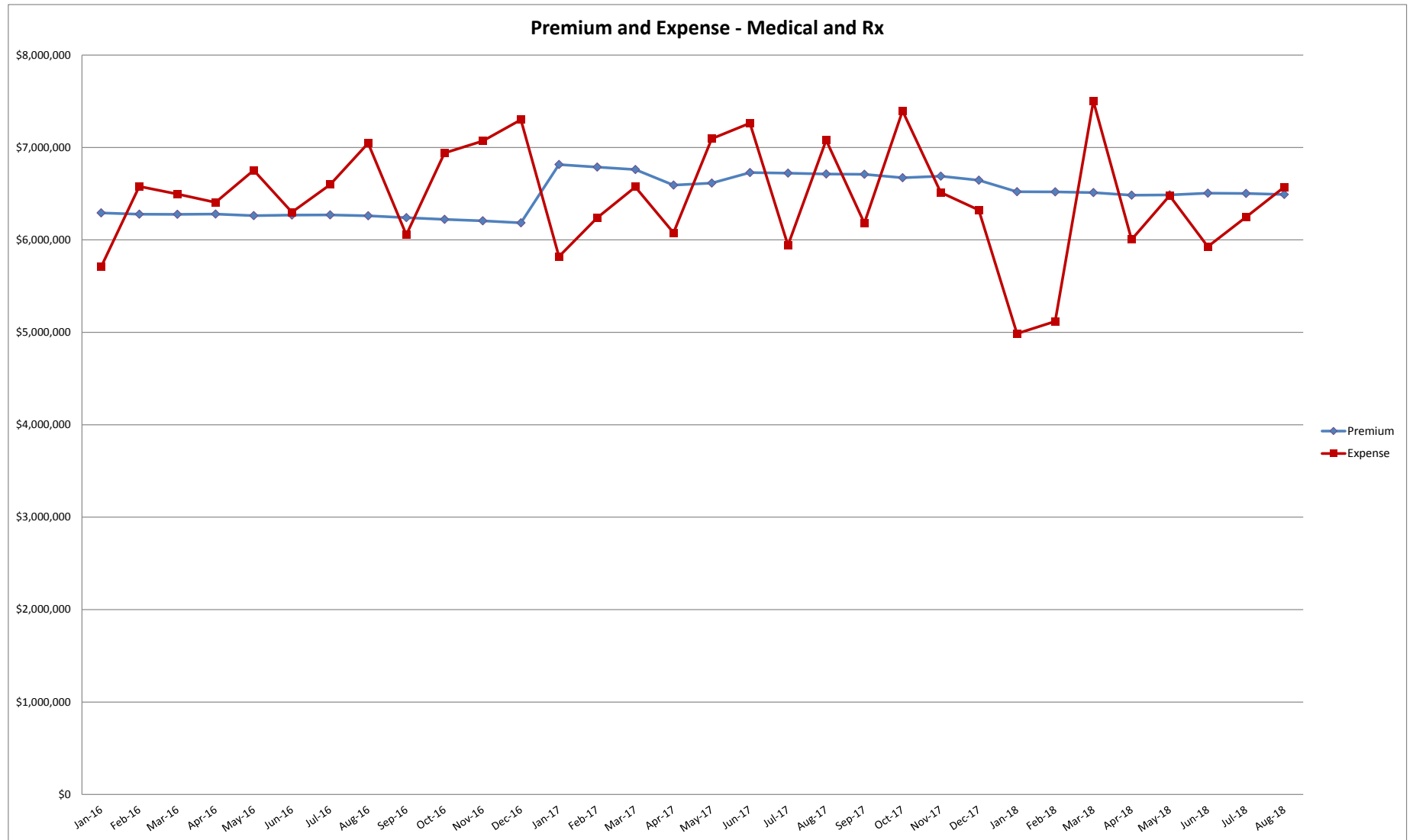
Data Sources:

Enrollment & Premium: Hourglass; Medical Claims & Capitation: Anthem CLR, Anthem MDP; Rx Claims: Envolve, EmpiRx, Anthem MDP; Fixed Cost Schedule: Appendix

Notes:

1. Fixed Cost Schedule: Appendix
2. Pooling Points: HMO = \$400,000 and EPO/PPO/HDHP = \$450,000.
3. EmpiRx PBM replaced Envolve PBM effective 1/1/2018
4. Fresno converted HMO to EPO plan effective 12/18/2017
5. Waterford and Ceres terminated from SJVIA effective 1/1/2018
6. All Others Claims include runout for Ceres and Waterford

**San Joaquin Valley Insurance Authority (SJVIA)
Anthem Blue Cross Premium and Claims Report as of August 2018
All Districts Combined - All Medical**





**San Joaquin Valley Insurance Authority (SJVIA)
Anthem Blue Cross Premium and Claims Report as of August 2018
All Districts Combined - HMO**

MONTH-YEAR	ENROLLED	FUNDING / PREMIUM	CLAIMS EXPENSE						SURPLUS / (DEFICIT)	AVERAGE CLAIM COST PEPM	TOTAL EXPENSE LOSS RATIO
			MEDICAL	CAPITATION	RX	FIXED	POOLED CLAIMS	TOTAL EXPENSE			
Jan-16	4,049	\$3,947,168	\$1,334,608	\$1,131,645	\$870,159	\$347,301	\$0	\$3,683,712	\$263,456	\$824.01	93.3%
Feb-16	4,045	\$3,931,981	\$1,959,178	\$1,127,940	\$894,530	\$346,958	\$0	\$4,328,606	-\$396,624	\$984.34	110.1%
Mar-16	4,044	\$3,930,093	\$1,481,310	\$1,123,252	\$1,001,187	\$346,872	\$0	\$3,952,621	-\$22,528	\$891.63	100.6%
Apr-16	4,028	\$3,914,357	\$1,612,225	\$1,121,050	\$870,482	\$345,512	\$0	\$3,949,269	-\$34,912	\$894.68	100.9%
May-16	4,016	\$3,902,235	\$1,957,496	\$1,120,362	\$859,069	\$344,482	\$0	\$4,281,409	-\$379,174	\$980.31	109.7%
Jun-16	4,029	\$3,909,977	\$1,709,598	\$1,126,152	\$902,316	\$345,598	\$0	\$4,083,664	-\$173,688	\$927.79	104.4%
Jul-16	4,028	\$3,900,668	\$1,782,613	\$1,156,189	\$904,071	\$345,512	\$0	\$4,188,386	-\$287,717	\$954.04	107.4%
Aug-16	4,014	\$3,886,089	\$2,517,765	\$1,149,168	\$917,188	\$344,312	-\$75,525	\$4,852,908	-\$966,819	\$1,123.22	124.9%
Sep-16	4,013	\$3,880,493	\$1,748,178	\$1,149,991	\$855,942	\$344,224	\$0	\$4,098,336	-\$217,843	\$935.49	105.6%
Oct-16	4,002	\$3,871,427	\$1,790,098	\$1,146,283	\$898,703	\$343,283	\$0	\$4,178,367	-\$306,941	\$958.29	107.9%
Nov-16	3,972	\$3,846,975	\$1,857,465	\$1,142,122	\$911,360	\$340,712	-\$45,491	\$4,206,167	-\$359,193	\$973.18	109.3%
Dec-16	3,953	\$3,827,552	\$3,334,337	\$1,103,713	\$892,519	\$339,081	-\$727,077	\$4,942,573	-\$1,115,021	\$1,164.56	129.1%
Jan-17	3,391	\$3,857,853	\$1,231,705	\$995,935	\$868,003	\$296,428	\$0	\$3,392,072	\$465,781	\$912.90	87.9%
Feb-17	3,371	\$3,829,484	\$1,695,358	\$991,948	\$778,716	\$294,679	\$0	\$3,760,701	\$68,783	\$1,028.19	98.2%
Mar-17	3,348	\$3,805,170	\$1,892,093	\$987,343	\$944,379	\$292,668	\$0	\$4,116,483	-\$311,314	\$1,142.12	108.2%
Apr-17	3,232	\$3,680,296	\$1,204,293	\$977,033	\$838,545	\$282,531	\$0	\$3,302,402	\$377,894	\$934.37	89.7%
May-17	3,238	\$3,685,382	\$2,117,425	\$977,081	\$922,366	\$283,059	\$0	\$4,299,931	-\$614,550	\$1,240.54	116.7%
Jun-17	3,318	\$3,768,088	\$1,533,203	\$972,474	\$987,256	\$290,050	\$0	\$3,782,983	-\$14,895	\$1,052.72	100.4%
Jul-17	3,295	\$3,733,939	\$1,257,109	\$991,172	\$817,251	\$288,039	\$0	\$3,353,572	\$380,367	\$930.36	89.8%
Aug-17	3,291	\$3,723,250	\$1,765,938	\$988,909	\$924,076	\$287,694	\$0	\$3,966,617	-\$243,367	\$1,117.87	106.5%
Sep-17	3,283	\$3,712,476	\$1,490,702	\$985,584	\$854,131	\$286,993	\$0	\$3,617,411	\$95,065	\$1,014.44	97.4%
Oct-17	3,255	\$3,681,354	\$2,128,613	\$979,410	\$905,280	\$284,550	-\$75,682	\$4,222,171	-\$540,818	\$1,209.71	114.7%
Nov-17	3,265	\$3,684,062	\$1,509,653	\$974,921	\$893,657	\$285,425	-\$1,520	\$3,662,136	\$21,926	\$1,034.21	99.4%
Dec-17	3,280	\$2,197,812	\$1,203,354	\$976,822	\$468,244	\$286,737	\$0	\$2,935,157	-\$737,345	\$807.45	133.5%
Jan-18	1	\$1,593	\$484,140	\$1,303	\$804	\$94	\$0	\$486,340	-\$484,747	\$486,246.58	30534.4%
Feb-18	1	\$1,593	\$267,307	\$392	\$0	\$94	\$0	\$267,793	-\$266,200	\$267,699.00	16813.1%
Mar-18	1	\$1,593	\$10,083	\$0	\$0	\$94	\$0	\$10,177	-\$8,584	\$10,083.00	638.9%
Apr-18	1	\$1,593	-\$142,685	\$0	\$0	\$94	\$0	-\$142,591	\$144,184	-\$142,685.00	-8952.5%
May-18	1	\$1,593	-\$9,714	\$0	\$0	\$94	\$0	-\$9,620	\$11,213	-\$9,714.00	-604.0%
Jun-18	1	\$1,593	-\$86	\$0	\$0	\$94	\$0	\$8	\$1,585	-\$86.00	0.5%
Jul-18	0	\$0	-\$29,862	\$0	\$0	\$0	\$0	-\$29,862	\$29,862	#DIV/0!	#DIV/0!
Aug-18	0	\$0	-\$29,755	\$0	\$0	\$0	\$0	-\$29,755	\$29,755	#DIV/0!	#DIV/0!
2015	4,605	\$47,200,812	\$27,086,366	\$15,057,894	\$10,956,150	\$5,003,196	-\$335,568	\$57,768,037	-\$10,567,225	\$954.76	122.4%
2016	4,016	\$46,749,016	\$23,084,871	\$13,597,868	\$10,777,527	\$4,133,848	-\$848,093	\$50,746,021	-\$3,997,005	\$967.20	108.5%
2017	3,297	\$43,359,166	\$19,029,446	\$11,798,633	\$10,201,906	\$3,458,854	-\$77,202	\$44,411,636	-\$1,052,471	\$1,035.02	102.4%
2018 YTD	1	\$9,557	\$549,428	\$1,695	\$804	\$561	\$0	\$552,488	-\$542,931	\$91,987.76	5781.2%
Current 12 Months	1,091	\$13,285,261	\$6,881,750	\$3,918,432	\$3,122,116	\$1,144,267	-\$77,202	\$14,989,363	-\$1,704,102	\$1,057.77	112.8%

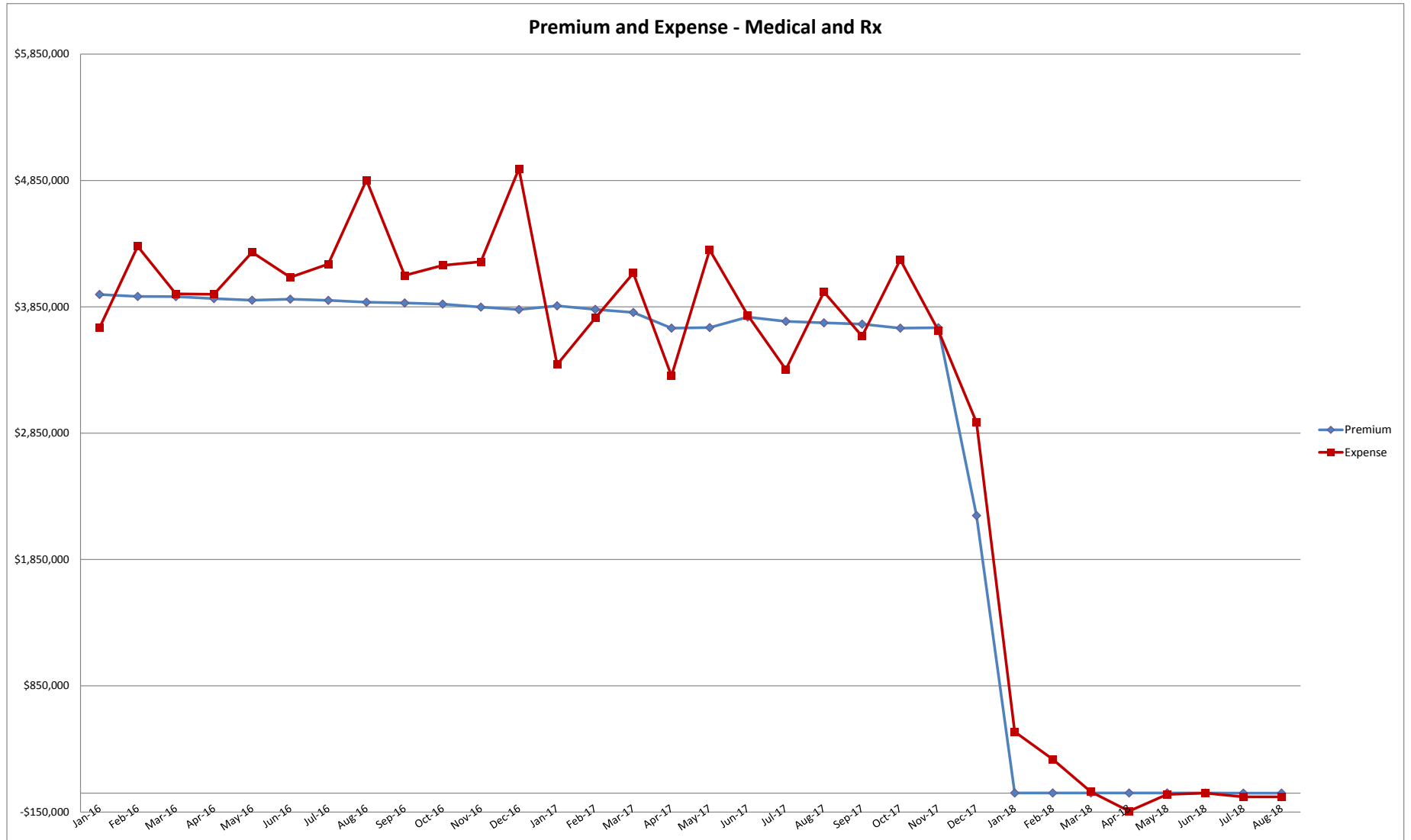
Data Sources:

Enrollment & Premium: Hourglass; Medical Claims & Capitation: Anthem CLR, Anthem MDP; Rx Claims: Envolve, EmpiRx, Anthem MDP; Fixed Cost Schedule: Appendix

Notes:

1. Fixed Cost Schedule: Appendix
2. Pooling Points: HMO = \$400,000 and EPO/PPO/HDHP = \$450,000.
3. EmpiRx PBM replaced Envolve PBM effective 1/1/2018
4. Fresno converted HMO to EPO plan effective 12/18/2017
5. Waterford and Ceres terminated from SJVIA effective 1/1/2018
6. All Others Claims include runout for Ceres and Waterford

San Joaquin Valley Insurance Authority (SJVIA)
Anthem Blue Cross Premium and Claims Report as of August 2018
All Districts Combined - HMO





**San Joaquin Valley Insurance Authority (SJVIA)
Anthem Blue Cross Premium and Claims Report as of August 2018
All Districts Combined - EPO**

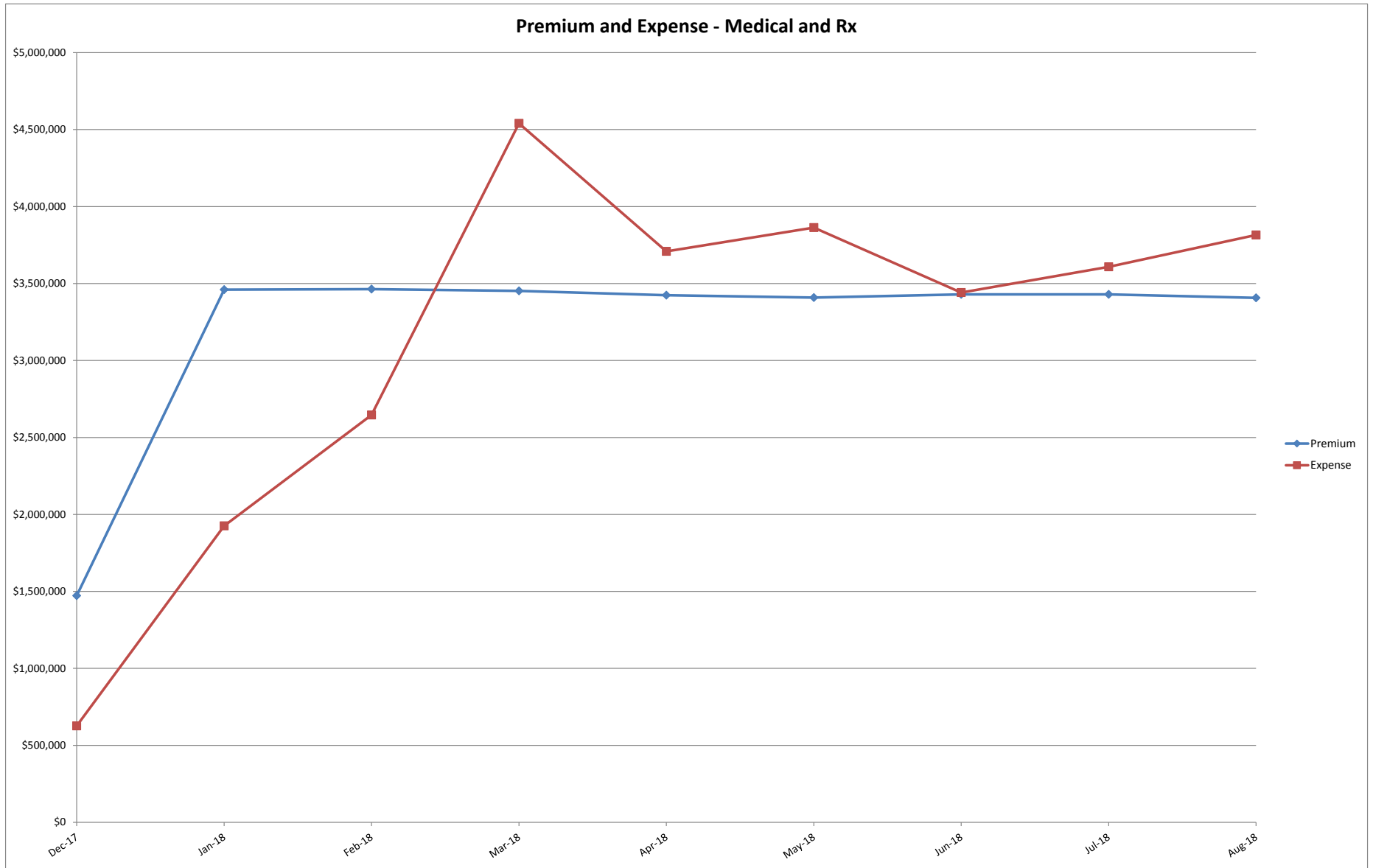
MONTH-YEAR	ENROLLED	FUNDING / PREMIUM	CLAIMS EXPENSE					SURPLUS / (DEFICIT)	AVERAGE CLAIM COST PEPM	TOTAL EXPENSE LOSS RATIO
			MEDICAL	RX	FIXED	POOLED CLAIMS	TOTAL EXPENSE			
Jan-17	0	\$0	\$0	\$0	\$0	\$0	\$0	\$0	\$0.00	0.0%
Feb-17	0	\$0	\$0	\$0	\$0	\$0	\$0	\$0	\$0.00	0.0%
Mar-17	0	\$0	\$0	\$0	\$0	\$0	\$0	\$0	\$0.00	0.0%
Apr-17	0	\$0	\$0	\$0	\$0	\$0	\$0	\$0	\$0.00	0.0%
May-17	0	\$0	\$0	\$0	\$0	\$0	\$0	\$0	\$0.00	0.0%
Jun-17	0	\$0	\$0	\$0	\$0	\$0	\$0	\$0	\$0.00	0.0%
Jul-17	0	\$0	\$0	\$0	\$0	\$0	\$0	\$0	\$0.00	0.0%
Aug-17	0	\$0	\$0	\$0	\$0	\$0	\$0	\$0	\$0.00	0.0%
Sep-17	0	\$0	\$0	\$0	\$0	\$0	\$0	\$0	\$0.00	0.0%
Oct-17	0	\$0	\$0	\$0	\$0	\$0	\$0	\$0	\$0.00	0.0%
Nov-17	0	\$0	\$0	\$0	\$0	\$0	\$0	\$0	\$0.00	0.0%
Dec-17	3,048	\$1,471,887	\$68,189	\$251,226	\$307,056	\$0	\$626,470	\$845,417	\$104.79	42.6%
Jan-18	3,121	\$3,460,514	\$743,187	\$867,858	\$314,410	\$0	\$1,925,455	\$1,535,059	\$516.20	55.6%
Feb-18	3,122	\$3,463,479	\$1,542,101	\$789,699	\$314,510	\$0	\$2,646,310	\$817,168	\$746.89	76.4%
Mar-18	3,112	\$3,451,850	\$3,301,710	\$924,970	\$313,503	\$0	\$4,540,183	-\$1,088,333	\$1,358.19	131.5%
Apr-18	3,087	\$3,423,792	\$2,596,335	\$801,696	\$310,984	\$0	\$3,709,015	-\$285,223	\$1,100.76	108.3%
May-18	3,074	\$3,408,456	\$2,670,046	\$883,943	\$309,675	\$0	\$3,863,664	-\$455,207	\$1,156.14	113.4%
Jun-18	3,098	\$3,429,672	\$2,361,578	\$767,589	\$312,093	\$0	\$3,441,259	-\$11,587	\$1,010.06	100.3%
Jul-18	3,101	\$3,429,177	\$2,413,373	\$911,839	\$312,395	-\$29,545	\$3,608,061	-\$178,884	\$1,062.78	105.2%
Aug-18	3,080	\$3,407,283	\$2,623,941	\$946,096	\$310,279	-\$64,707	\$3,815,609	-\$408,326	\$1,138.09	112.0%
2017	3,048	\$1,471,887	\$68,189	\$251,226	\$307,056	\$0	\$626,470	\$845,417	\$104.79	42.6%
2018 YTD	3,099	\$27,474,223	\$18,252,271	\$6,893,689	\$2,497,848	-\$94,252	\$27,549,556	-\$75,333	\$1,010.35	100.3%
Current 12 Months	2,320	\$28,946,110	\$18,320,460	\$7,144,915	\$2,804,904	-\$94,252	\$28,176,027	\$770,084	\$911.22	97.3%

Data Sources: Enrollment & Premium: Hourglass; Medical Claims & Capitation: Anthem CLR, Anthem MDP; Rx Claims: Envolve, EmpiRx, Anthem MDP; Fixed Cost Schedule: Appendix

Notes:

1. Fixed Cost Schedule: Appendix
2. Pooling Points: HMO = \$400,000 and EPO/PPO/HDHP = \$450,000.
3. EmpiRx PBM replaced Envolve PBM effective 1/1/2018
4. Fresno converted HMO to EPO plan effective 12/18/2017
5. Waterford and Ceres terminated from SJVIA effective 1/1/2018
6. All Others Claims include runout for Ceres and Waterford

**San Joaquin Valley Insurance Authority (SJVIA)
Anthem Blue Cross Premium and Claims Report as of August 2018
All Districts Combined - EPO**





**San Joaquin Valley Insurance Authority (SJVIA)
Anthem Blue Cross Premium and Claims Report as of August 2018
All Districts Combined - PPO**

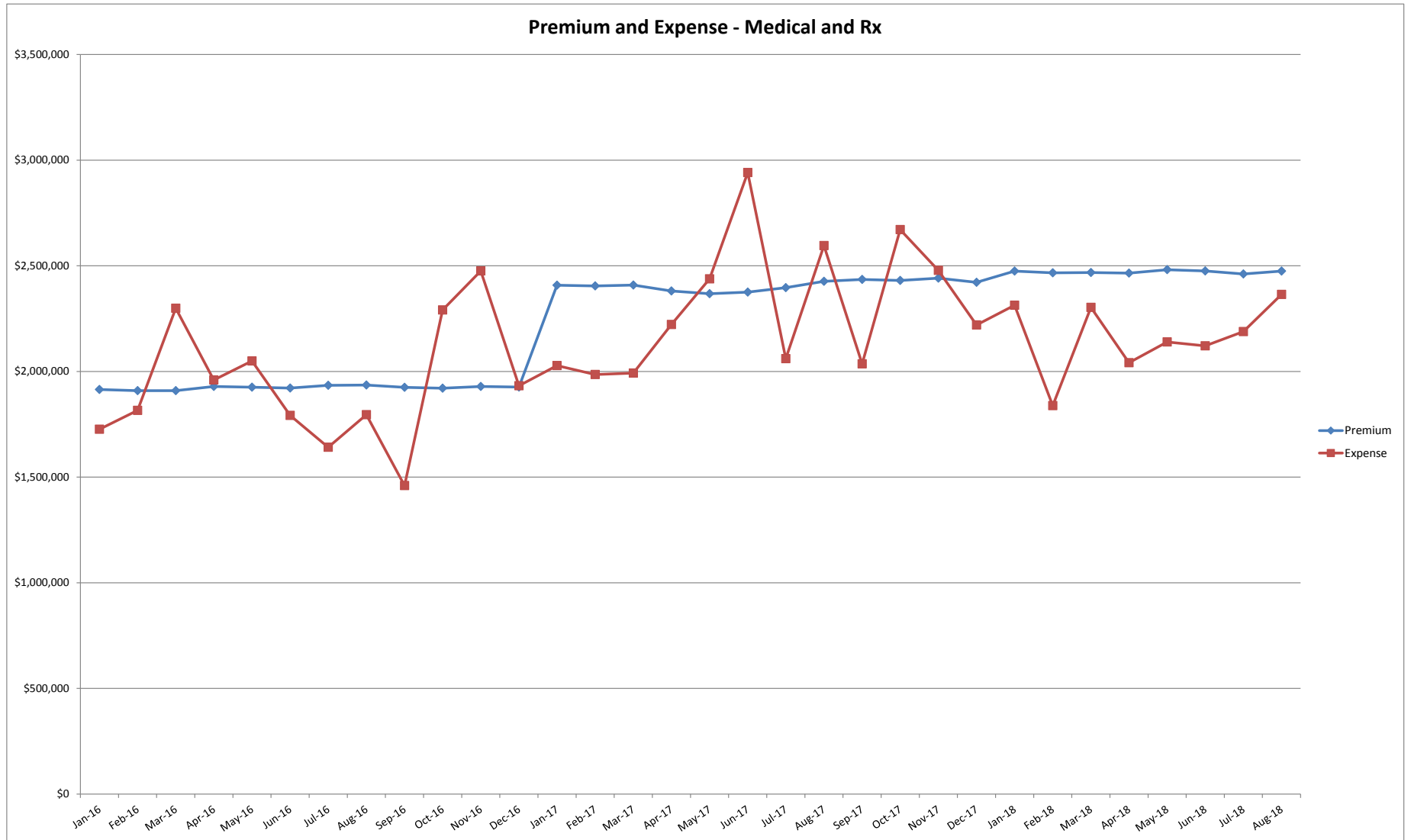
MONTH-YEAR	ENROLLED	FUNDING / PREMIUM	CLAIMS EXPENSE				SURPLUS / (DEFICIT)	AVERAGE CLAIM COST PEPM	TOTAL EXPENSE LOSS RATIO	
			MEDICAL	RX	FIXED	POOLED CLAIMS				TOTAL EXPENSE
Jan-16	2,690	\$1,914,485	\$1,062,073	\$490,627	\$173,742	\$0	\$1,726,442	\$188,043	\$577.21	90.2%
Feb-16	2,692	\$1,909,087	\$1,028,097	\$613,643	\$173,869	\$0	\$1,815,609	\$93,478	\$609.86	95.1%
Mar-16	2,693	\$1,909,124	\$1,529,475	\$595,644	\$173,931	\$0	\$2,299,050	-\$389,926	\$789.13	120.4%
Apr-16	2,730	\$1,928,979	\$1,278,956	\$504,600	\$176,320	\$0	\$1,959,875	-\$30,896	\$653.32	101.6%
May-16	2,720	\$1,925,282	\$1,293,399	\$580,692	\$175,674	\$0	\$2,049,765	-\$124,482	\$689.00	106.5%
Jun-16	2,720	\$1,921,491	\$1,096,943	\$519,503	\$175,672	\$0	\$1,792,118	\$129,373	\$594.28	93.3%
Jul-16	2,735	\$1,934,082	\$957,986	\$506,558	\$176,644	\$0	\$1,641,188	\$292,893	\$535.48	84.9%
Aug-16	2,735	\$1,935,714	\$981,781	\$637,094	\$176,646	\$0	\$1,795,522	\$140,192	\$591.91	92.8%
Sep-16	2,728	\$1,925,079	\$782,238	\$501,415	\$176,196	\$0	\$1,459,850	\$465,229	\$470.55	75.8%
Oct-16	2,721	\$1,920,538	\$1,571,744	\$543,160	\$175,747	\$0	\$2,290,650	-\$370,112	\$777.25	119.3%
Nov-16	2,738	\$1,929,212	\$1,781,402	\$517,132	\$176,844	\$0	\$2,475,378	-\$546,165	\$839.49	128.3%
Dec-16	2,737	\$1,926,358	\$1,239,352	\$535,650	\$176,777	-\$19,394	\$1,932,386	-\$6,027	\$641.44	100.3%
Jan-17	3,049	\$2,408,045	\$1,167,779	\$658,355	\$201,852	\$0	\$2,027,986	\$380,059	\$598.93	84.2%
Feb-17	3,040	\$2,404,910	\$1,173,087	\$611,471	\$201,257	\$0	\$1,985,815	\$419,096	\$587.03	82.6%
Mar-17	3,051	\$2,409,004	\$1,139,347	\$651,192	\$201,977	\$0	\$1,992,516	\$416,488	\$586.87	82.7%
Apr-17	3,024	\$2,381,103	\$1,441,495	\$580,274	\$200,190	\$0	\$2,221,959	\$159,144	\$668.57	93.3%
May-17	3,011	\$2,368,076	\$1,628,318	\$610,381	\$199,332	\$0	\$2,438,031	-\$69,955	\$743.51	103.0%
Jun-17	3,016	\$2,375,163	\$2,038,616	\$702,737	\$199,665	\$0	\$2,941,018	-\$565,855	\$908.94	123.8%
Jul-17	3,046	\$2,396,547	\$1,230,206	\$628,628	\$201,654	\$0	\$2,060,488	\$336,059	\$610.25	86.0%
Aug-17	3,083	\$2,426,551	\$1,596,397	\$794,992	\$204,102	\$0	\$2,595,491	-\$168,940	\$775.67	107.0%
Sep-17	3,099	\$2,435,486	\$1,049,152	\$781,883	\$205,163	\$0	\$2,036,198	\$399,288	\$590.85	83.6%
Oct-17	3,092	\$2,430,771	\$1,715,373	\$751,177	\$204,696	\$0	\$2,671,246	-\$240,475	\$797.72	109.9%
Nov-17	3,105	\$2,441,299	\$1,617,686	\$655,311	\$205,556	\$0	\$2,478,553	-\$37,254	\$732.04	101.5%
Dec-17	3,070	\$2,421,402	\$1,249,063	\$767,492	\$203,238	\$0	\$2,219,793	\$201,609	\$656.86	91.7%
Jan-18	3,056	\$2,474,747	\$1,416,549	\$653,413	\$243,086	\$0	\$2,313,048	\$161,700	\$677.34	93.5%
Feb-18	3,050	\$2,466,814	\$932,401	\$663,106	\$242,546	\$0	\$1,838,053	\$628,761	\$523.12	74.5%
Mar-18	3,054	\$2,468,391	\$1,362,590	\$697,817	\$242,871	\$0	\$2,303,278	\$165,113	\$674.66	93.3%
Apr-18	3,058	\$2,465,659	\$1,106,965	\$691,104	\$243,169	\$0	\$2,041,239	\$424,420	\$587.99	82.8%
May-18	3,092	\$2,481,385	\$1,182,191	\$711,644	\$245,894	\$0	\$2,139,730	\$341,656	\$612.50	86.2%
Jun-18	3,090	\$2,475,265	\$1,183,141	\$692,047	\$245,721	\$0	\$2,120,909	\$354,356	\$606.86	85.7%
Jul-18	3,076	\$2,461,369	\$1,210,462	\$733,450	\$244,589	\$0	\$2,188,501	\$272,868	\$631.96	88.9%
Aug-18	3,092	\$2,475,036	\$1,345,548	\$773,067	\$245,855	\$0	\$2,364,470	\$110,566	\$685.19	95.5%
2015	2,634	\$21,395,949	\$13,739,706	\$6,143,677	\$2,222,984	\$0	\$22,106,367	-\$710,418	\$629.06	103.3%
2016	2,720	\$23,079,432	\$14,603,446	\$6,545,718	\$2,108,061	-\$19,394	\$23,237,832	-\$158,400	\$647.38	100.7%
2017	3,057	\$28,898,357	\$17,046,519	\$8,193,894	\$2,428,681	\$0	\$27,669,093	\$1,229,264	\$688.01	95.7%
2018 YTD	3,071	\$19,768,666	\$9,739,847	\$5,615,648	\$1,953,731	\$0	\$17,309,226	\$2,459,440	\$625.02	87.6%
Current 12 Months	3,078	\$29,497,623	\$15,371,121	\$8,571,511	\$2,772,383	\$0	\$26,715,016	\$2,782,608	\$648.25	90.6%

Data Sources: Enrollment & Premium: Hourglass; Medical Claims & Capitation: Anthem CLR, Anthem MDP; Rx Claims: Envolve, EmpiRx, Anthem MDP; Fixed Cost Schedule: Appendix

Notes:

1. Fixed Cost Schedule: Appendix
2. Pooling Points: HMO = \$400,000 and EPO/PPO/HDHP = \$450,000.
3. EmpiRx PBM replaced Envolve PBM effective 1/1/2018
4. Fresno converted HMO to EPO plan effective 12/18/2017
5. Waterford and Ceres terminated from SJVIA effective 1/1/2018
6. All Others Claims include runout for Ceres and Waterford

**San Joaquin Valley Insurance Authority (SJVIA)
Anthem Blue Cross Premium and Claims Report as of August 2018
All Districts Combined - PPO**





**San Joaquin Valley Insurance Authority (SJVIA)
Anthem Blue Cross Premium and Claims Report as of August 2018
All Districts Combined - HDHP**

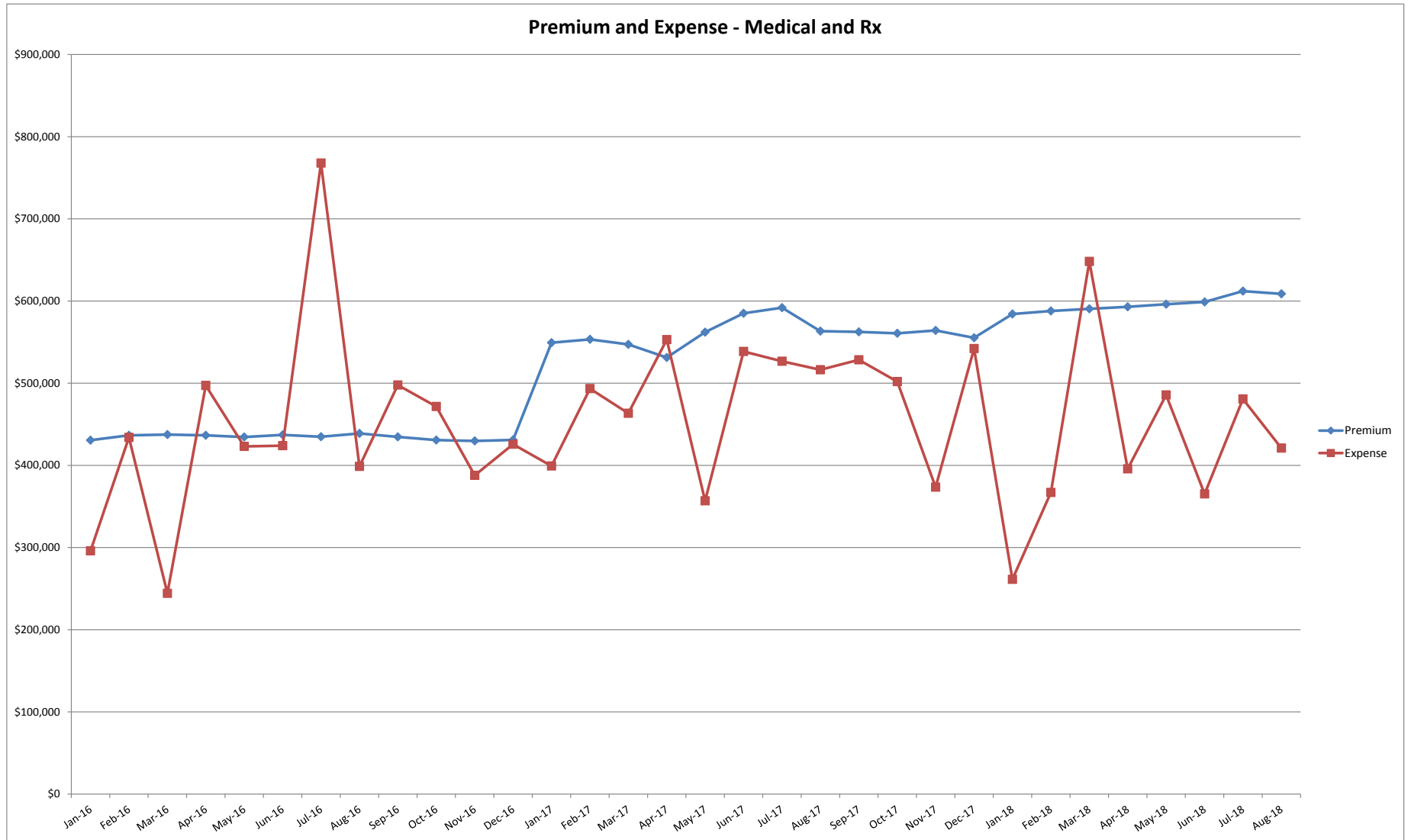
MONTH-YEAR	ENROLLED	FUNDING / PREMIUM	CLAIMS EXPENSE				SURPLUS / (DEFICIT)	AVERAGE CLAIM COST PEPM	TOTAL EXPENSE LOSS RATIO	
			MEDICAL	RX	FIXED	POOLED CLAIMS				TOTAL EXPENSE
Jan-16	676	\$430,642	\$190,383	\$61,983	\$43,644	\$0	\$296,010	\$134,632	\$373.32	68.7%
Feb-16	683	\$436,510	\$349,360	\$40,463	\$44,094	\$0	\$433,917	\$2,594	\$570.75	99.4%
Mar-16	688	\$437,498	\$135,438	\$64,474	\$44,418	\$0	\$244,330	\$193,167	\$290.57	55.8%
Apr-16	691	\$436,654	\$354,707	\$97,956	\$44,612	\$0	\$497,275	-\$60,621	\$655.08	113.9%
May-16	690	\$434,484	\$287,038	\$91,436	\$44,548	\$0	\$423,022	\$11,463	\$548.51	97.4%
Jun-16	696	\$437,103	\$267,019	\$112,039	\$44,935	\$0	\$423,993	\$13,110	\$544.62	97.0%
Jul-16	695	\$434,872	\$589,834	\$133,113	\$44,870	\$0	\$767,817	-\$332,945	\$1,040.21	176.6%
Aug-16	701	\$438,774	\$268,305	\$85,119	\$45,258	\$0	\$398,682	\$40,093	\$504.17	90.9%
Sep-16	693	\$434,676	\$305,698	\$147,318	\$44,741	\$0	\$497,757	-\$63,081	\$653.70	114.5%
Oct-16	689	\$430,769	\$319,235	\$107,873	\$44,483	\$0	\$471,591	-\$40,821	\$619.90	109.5%
Nov-16	684	\$429,706	\$241,053	\$102,655	\$44,160	\$0	\$387,868	\$41,838	\$502.50	90.3%
Dec-16	687	\$430,916	\$232,661	\$148,781	\$44,354	\$0	\$425,796	\$5,120	\$555.23	98.8%
Jan-17	784	\$549,235	\$301,349	\$46,039	\$51,885	\$0	\$399,273	\$149,962	\$443.10	72.7%
Feb-17	789	\$553,287	\$390,105	\$50,974	\$52,216	\$0	\$493,295	\$59,992	\$559.04	89.2%
Mar-17	780	\$547,213	\$291,483	\$120,354	\$51,623	\$0	\$463,460	\$83,754	\$528.00	84.7%
Apr-17	757	\$531,254	\$418,163	\$84,758	\$50,101	\$0	\$553,022	-\$21,768	\$664.36	104.1%
May-17	804	\$562,043	\$185,635	\$118,011	\$53,211	\$0	\$356,857	\$205,187	\$377.67	63.5%
Jun-17	838	\$585,036	\$341,389	\$141,811	\$55,460	\$0	\$538,660	\$46,376	\$576.61	92.1%
Jul-17	853	\$591,868	\$340,803	\$129,489	\$56,453	\$0	\$526,745	\$65,123	\$551.34	89.0%
Aug-17	814	\$563,390	\$317,389	\$145,106	\$53,872	\$0	\$516,367	\$47,023	\$568.18	91.7%
Sep-17	816	\$562,473	\$292,926	\$181,459	\$54,005	\$0	\$528,390	\$34,083	\$581.35	93.9%
Oct-17	813	\$560,698	\$293,972	\$154,133	\$53,808	\$0	\$501,913	\$58,784	\$551.17	89.5%
Nov-17	823	\$564,103	\$175,378	\$143,619	\$54,470	\$0	\$373,467	\$190,636	\$387.60	66.2%
Dec-17	762	\$555,223	\$335,833	\$155,859	\$50,434	\$0	\$542,126	\$13,098	\$645.27	97.6%
Jan-18	780	\$584,165	\$123,436	\$70,685	\$67,197	\$0	\$261,318	\$322,847	\$248.87	44.7%
Feb-18	782	\$587,933	\$232,354	\$67,174	\$67,384	\$0	\$366,912	\$221,020	\$383.03	62.4%
Mar-18	786	\$590,458	\$467,327	\$113,171	\$67,730	\$0	\$648,228	-\$57,770	\$738.55	109.8%
Apr-18	789	\$592,894	\$231,956	\$95,884	\$67,990	\$0	\$395,830	\$197,064	\$415.51	66.8%
May-18	796	\$596,128	\$299,227	\$117,883	\$68,595	\$0	\$485,705	\$110,422	\$524.01	81.5%
Jun-18	803	\$598,883	\$151,272	\$144,709	\$69,201	\$0	\$365,182	\$233,702	\$368.59	61.0%
Jul-18	825	\$612,055	\$287,858	\$121,752	\$71,096	\$0	\$480,706	\$131,349	\$496.50	78.5%
Aug-18	823	\$608,785	\$216,991	\$133,079	\$70,930	\$0	\$421,000	\$187,785	\$425.36	69.2%
2015	618	\$4,586,543	\$2,454,268	\$942,919	\$521,272	\$0	\$3,918,459	\$668,084	\$458.27	85.4%
2016	689	\$5,212,607	\$3,540,731	\$1,193,210	\$534,116	\$0	\$5,268,057	-\$55,451	\$572.22	101.1%
2017	803	\$6,725,823	\$3,684,425	\$1,471,612	\$637,538	\$0	\$5,793,575	\$932,249	\$535.25	86.1%
2018 YTD	798	\$4,771,301	\$2,010,421	\$864,337	\$550,123	\$0	\$3,424,881	\$1,346,419	\$450.31	71.8%
Current 12 Months	800	\$7,013,797	\$3,108,530	\$1,499,407	\$762,839	\$0	\$5,370,776	\$1,643,021	\$480.09	76.6%

Data Sources: Enrollment & Premium: Hourglass; Medical Claims & Capitation: Anthem CLR, Anthem MDP; Rx Claims: Envolve, EmpiRx, Anthem MDP; Fixed Cost Schedule: Appendix

Notes:

1. Fixed Cost Schedule: Appendix
2. Pooling Points: HMO = \$400,000 and EPO/PPO/HDHP = \$450,000.
3. EmpiRx PBM replaced Envolve PBM effective 1/1/2018
4. Fresno converted HMO to EPO plan effective 12/18/2017
5. Waterford and Ceres terminated from SJVIA effective 1/1/2018
6. All Others Claims include runout for Ceres and Waterford

**San Joaquin Valley Insurance Authority (SJVIA)
Anthem Blue Cross Premium and Claims Report as of August 2018
All Districts Combined - HDHP**





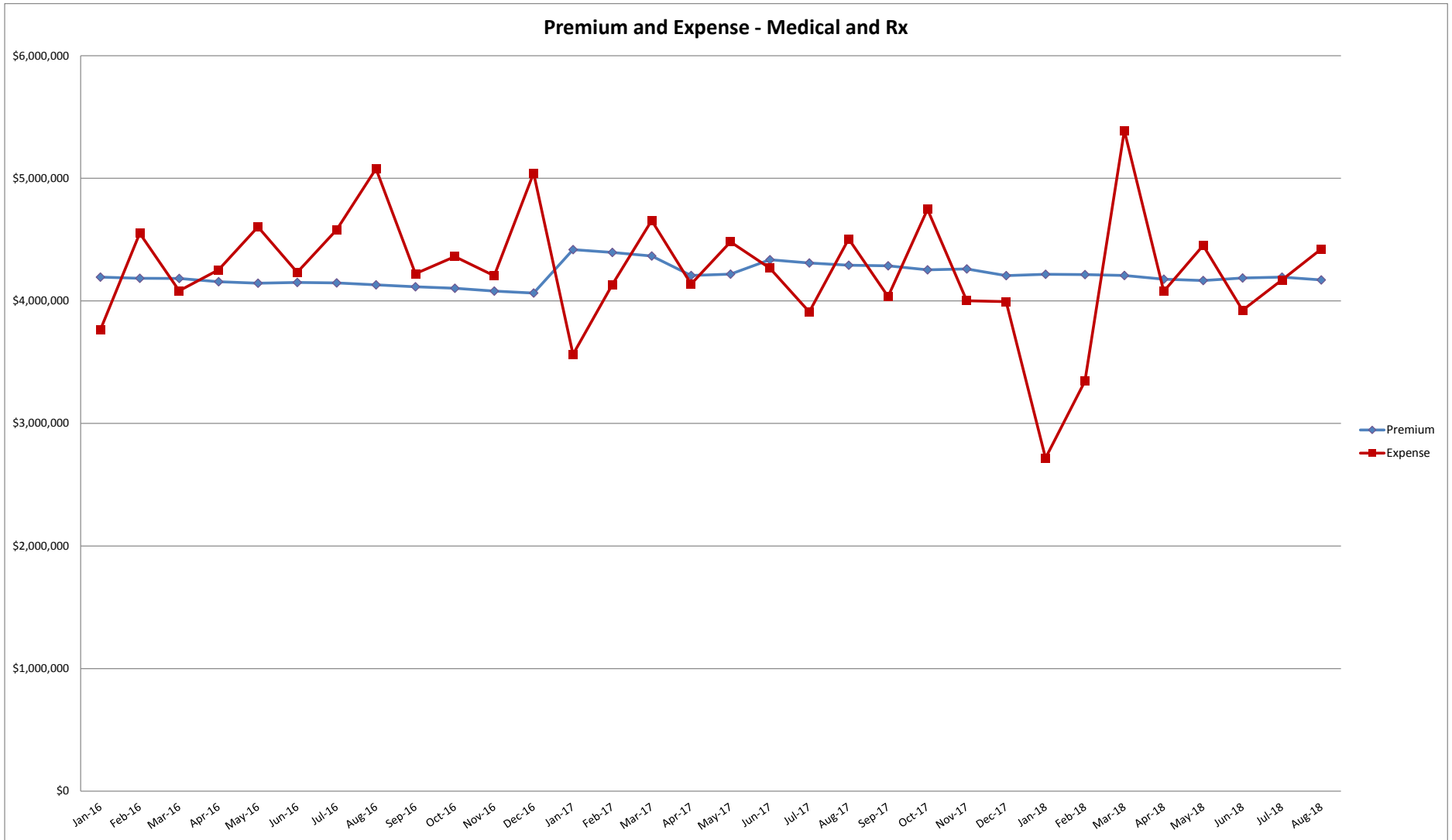
**San Joaquin Valley Insurance Authority (SJVIA)
Anthem Blue Cross Premium and Claims Report as of August 2018
County of Fresno - All Medical**

MONTH-YEAR	ENROLLED	FUNDING / PREMIUM	CLAIMS EXPENSE					SURPLUS / (DEFICIT)	AVERAGE CLAIM COST PEPM	TOTAL EXPENSE LOSS RATIO	
			MEDICAL	CAPITATION	RX	FIXED	POOLED CLAIMS				TOTAL EXPENSE
Jan-16	4,504	\$4,194,043	\$1,446,667	\$1,021,945	\$926,517	\$368,464	\$0	\$3,763,592	\$430,451	\$753.80	89.7%
Feb-16	4,508	\$4,184,176	\$2,221,051	\$1,017,540	\$944,596	\$368,637	\$0	\$4,551,824	-\$367,648	\$927.95	108.8%
Mar-16	4,512	\$4,182,489	\$1,648,255	\$1,015,312	\$1,049,494	\$368,874	\$0	\$4,081,935	\$100,553	\$822.93	97.6%
Apr-16	4,483	\$4,156,205	\$1,917,726	\$1,010,602	\$958,515	\$366,494	\$0	\$4,253,338	-\$97,133	\$867.02	102.3%
May-16	4,472	\$4,144,419	\$2,268,740	\$1,009,640	\$960,052	\$365,615	\$0	\$4,604,047	-\$459,628	\$947.77	111.1%
Jun-16	4,485	\$4,149,744	\$2,849,109	\$1,018,022	\$998,545	\$366,687	\$0	\$4,232,363	-\$82,619	\$861.91	102.0%
Jul-16	4,491	\$4,146,170	\$2,142,910	\$1,045,525	\$1,024,403	\$367,010	\$0	\$4,579,848	-\$433,678	\$938.06	110.5%
Aug-16	4,477	\$4,130,508	\$2,731,921	\$1,044,181	\$1,011,610	\$365,725	-\$75,525	\$5,077,914	-\$947,405	\$1,052.53	122.9%
Sep-16	4,463	\$4,115,418	\$1,911,978	\$1,039,134	\$905,528	\$364,779	\$0	\$4,221,419	-\$106,001	\$864.14	102.6%
Oct-16	4,447	\$4,102,476	\$2,053,161	\$1,037,260	\$907,234	\$363,429	\$0	\$4,361,085	-\$258,609	\$898.96	106.3%
Nov-16	4,416	\$4,079,856	\$1,919,180	\$1,034,489	\$935,145	\$360,898	-\$45,491	\$4,204,221	-\$124,365	\$870.32	103.0%
Dec-16	4,403	\$4,063,662	\$3,472,761	\$995,672	\$941,679	\$359,742	-\$727,077	\$5,042,776	-\$979,114	\$1,064	124.1%
Jan-17	4,217	\$4,418,172	\$1,323,742	\$943,781	\$947,744	\$348,074	\$0	\$3,563,341	\$854,830	\$762.45	80.7%
Feb-17	4,204	\$4,395,734	\$1,975,135	\$939,983	\$869,746	\$346,812	\$0	\$4,131,676	\$264,057	\$900.30	94.0%
Mar-17	4,176	\$4,366,453	\$2,266,845	\$935,255	\$1,109,568	\$344,493	\$0	\$4,656,161	-\$289,708	\$1,032.49	106.6%
Apr-17	4,022	\$4,207,039	\$1,938,565	\$926,167	\$939,788	\$331,911	\$0	\$4,136,430	\$70,609	\$945.93	98.3%
May-17	4,046	\$4,218,545	\$2,134,703	\$925,137	\$1,087,642	\$333,584	\$0	\$4,481,065	-\$262,520	\$1,025.08	106.2%
Jun-17	4,169	\$4,336,268	\$1,841,158	\$920,448	\$1,162,113	\$343,374	\$0	\$4,267,092	\$69,175	\$941.17	98.4%
Jul-17	4,161	\$4,309,129	\$1,657,044	\$939,122	\$971,215	\$342,379	\$0	\$3,909,759	\$399,369	\$857.34	90.7%
Aug-17	4,151	\$4,291,222	\$2,105,120	\$936,084	\$1,122,204	\$341,590	\$0	\$4,504,998	-\$213,776	\$1,002.99	105.0%
Sep-17	4,148	\$4,286,191	\$1,702,653	\$932,821	\$1,058,635	\$341,243	\$0	\$4,035,352	\$250,839	\$890.58	94.1%
Oct-17	4,115	\$4,252,762	\$2,450,589	\$927,014	\$1,106,328	\$338,446	-\$75,682	\$4,746,695	-\$493,933	\$1,071.26	111.6%
Nov-17	4,134	\$4,260,644	\$1,660,657	\$922,220	\$1,080,003	\$339,894	-\$1,520	\$4,001,254	\$259,391	\$885.67	93.9%
Dec-17	4,037	\$4,205,988	\$1,518,938	\$923,518	\$910,669	\$640,827	\$0	\$3,993,952	\$212,036	\$830.60	95.0%
Jan-18	4,014	\$4,216,453	\$1,343,582	\$1,303	\$981,088	\$391,645	\$0	\$2,717,618	\$1,498,835	\$579.47	64.5%
Feb-18	4,013	\$4,214,950	\$2,067,824	\$392	\$885,589	\$391,573	\$0	\$3,345,378	\$869,572	\$736.06	79.4%
Mar-18	4,008	\$4,206,695	\$3,917,235	\$0	\$1,081,214	\$390,998	\$0	\$5,389,447	-\$1,182,753	\$1,247.12	128.1%
Apr-18	3,982	\$4,176,812	\$2,742,323	\$0	\$946,806	\$388,393	\$0	\$4,077,522	\$99,289	\$926.45	97.6%
May-18	3,977	\$4,165,557	\$3,014,792	\$0	\$1,049,876	\$387,775	\$0	\$4,452,443	-\$286,886	\$1,022.04	106.9%
Jun-18	4,006	\$4,186,011	\$2,584,783	\$0	\$948,297	\$390,625	\$0	\$3,923,706	\$262,305	\$881.95	93.7%
Jul-18	4,027	\$4,193,847	\$2,719,596	\$0	\$1,087,767	\$392,484	-\$29,545	\$4,170,303	\$23,545	\$938.12	99.4%
Aug-18	4,006	\$4,170,389	\$2,976,059	\$0	\$1,121,455	\$390,369	-\$64,707	\$4,423,176	-\$252,786	\$1,006.69	106.1%
2015	4,960	\$49,524,371	\$26,241,999	\$13,681,568	\$11,812,227	\$5,199,036	-\$65,205	\$56,869,626	-\$7,345,255	\$868.06	114.8%
2016	4,472	\$49,649,165	\$25,583,459	\$12,289,322	\$11,563,318	\$4,386,355	-\$848,093	\$52,974,360	-\$3,325,196	\$905.46	106.7%
2017	4,132	\$51,548,146	\$22,575,148	\$11,171,550	\$12,365,655	\$4,392,626	-\$77,202	\$50,427,777	\$1,120,369	\$928.50	97.8%
2018 YTD	4,004	\$33,530,714	\$21,366,194	\$1,695	\$8,102,093	\$3,123,863	-\$94,252	\$32,499,593	\$1,031,122	\$917.05	96.9%
Current 12 Months	4,039	\$50,536,300	\$28,699,031	\$3,707,268	\$12,257,728	\$4,784,273	-\$171,454	\$49,276,846	\$1,259,454	\$918.00	97.5%

Data Sources: Enrollment & Premium: Hourglass; Medical Claims & Capitation: Anthem CLR, Anthem MDP; Rx Claims: Envolve, EmpiRx, Anthem MDP; Fixed Cost Schedule: Appendix

- Notes:
1. Fixed Cost Schedule: Appendix
 2. Pooling Points: HMO = \$400,000 and EPO/PPO/HDHP = \$450,000.
 3. EmpiRx PBM replaced Envolve PBM effective 1/1/2018
 4. Fresno converted HMO to EPO plan effective 12/18/2017

**San Joaquin Valley Insurance Authority (SJVIA)
Anthem Blue Cross Premium and Claims Report as of August 2018
County of Fresno - All Medical**





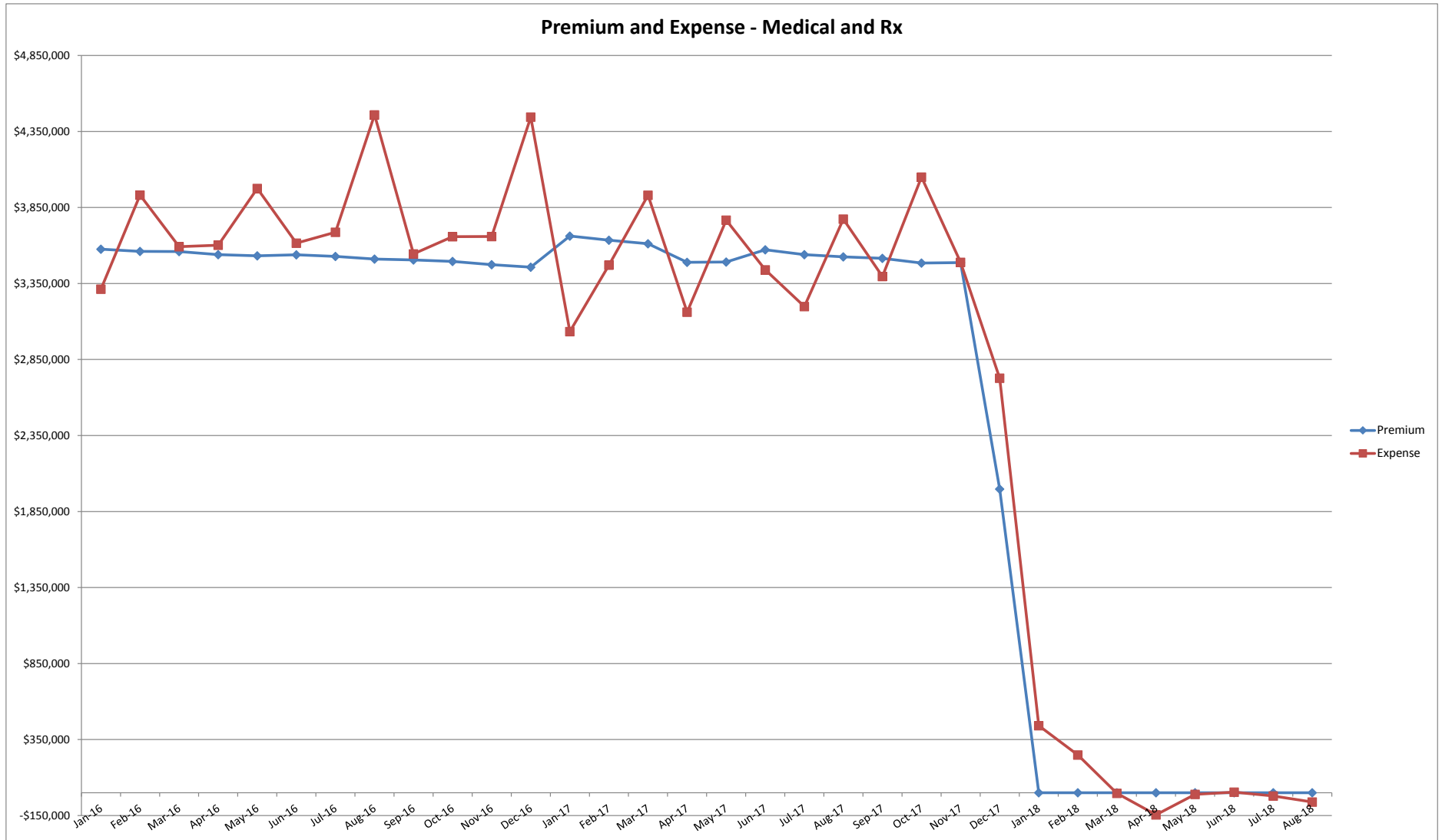
**San Joaquin Valley Insurance Authority (SJVIA)
Anthem Blue Cross Premium and Claims Report as of August 2018
County of Fresno - HMO**

MONTH-YEAR	ENROLLED	FUNDING / PREMIUM	CLAIMS EXPENSE						SURPLUS / (DEFICIT)	AVERAGE CLAIM COST PEPM	TOTAL EXPENSE LOSS RATIO
			MEDICAL	CAPITATION	RX	FIXED	POOLED CLAIMS	TOTAL EXPENSE			
Jan-16	3,670	\$3,576,244	\$1,162,022	\$1,021,945	\$813,948	\$314,629	\$0	\$3,312,544	\$263,700	\$816.87	92.6%
Feb-16	3,666	\$3,561,693	\$1,769,284	\$1,017,540	\$830,366	\$314,286	\$0	\$3,931,476	-\$369,784	\$986.69	110.4%
Mar-16	3,665	\$3,559,805	\$1,336,202	\$1,015,312	\$926,710	\$314,200	\$0	\$3,592,424	-\$32,620	\$894.47	100.9%
Apr-16	3,641	\$3,540,178	\$1,479,458	\$1,010,602	\$799,967	\$312,143	\$0	\$3,602,170	-\$61,993	\$903.61	101.8%
May-16	3,633	\$3,531,764	\$1,853,559	\$1,009,640	\$800,884	\$311,457	\$0	\$3,975,540	-\$443,776	\$1,008.56	112.6%
Jun-16	3,644	\$3,538,657	\$1,459,858	\$1,018,022	\$825,450	\$312,400	\$0	\$3,615,730	-\$77,073	\$928.70	102.2%
Jul-16	3,641	\$3,528,478	\$1,493,340	\$1,045,525	\$836,246	\$312,143	\$0	\$3,687,254	-\$158,776	\$926.97	104.5%
Aug-16	3,623	\$3,510,818	\$2,327,662	\$1,044,181	\$852,765	\$310,600	-\$75,525	\$4,459,684	-\$948,866	\$1,145.21	127.0%
Sep-16	3,621	\$3,505,311	\$1,485,167	\$1,039,134	\$709,564	\$310,428	\$0	\$3,544,294	-\$38,982	\$893.09	101.1%
Oct-16	3,606	\$3,494,850	\$1,557,642	\$1,037,260	\$753,983	\$309,142	\$0	\$3,658,027	-\$163,178	\$928.70	104.7%
Nov-16	3,581	\$3,473,820	\$1,595,231	\$1,034,489	\$767,925	\$306,999	-\$45,491	\$3,659,153	-\$185,333	\$936.09	105.3%
Dec-16	3,566	\$3,457,726	\$3,122,906	\$995,672	\$747,347	\$305,713	-\$727,077	\$4,444,560	-\$986,834	\$1,160.64	128.5%
Jan-17	3,261	\$3,662,440	\$953,124	\$943,781	\$852,019	\$284,816	\$0	\$3,033,740	\$628,700	\$842.97	82.8%
Feb-17	3,242	\$3,634,968	\$1,495,166	\$939,983	\$752,976	\$283,156	\$0	\$3,471,281	\$163,687	\$983.38	95.5%
Mar-17	3,220	\$3,611,288	\$1,793,588	\$935,255	\$920,529	\$281,235	\$0	\$3,930,607	-\$319,318	\$1,133.35	108.8%
Apr-17	3,107	\$3,489,598	\$1,152,900	\$926,167	\$811,501	\$271,365	\$0	\$3,161,933	\$327,664	\$930.34	90.6%
May-17	3,111	\$3,491,293	\$1,670,467	\$925,137	\$899,619	\$271,715	\$0	\$3,766,937	-\$275,644	\$1,123.50	107.9%
Jun-17	3,189	\$3,571,890	\$1,276,006	\$920,448	\$965,026	\$278,527	\$0	\$3,440,007	\$131,884	\$991.37	96.3%
Jul-17	3,167	\$3,539,921	\$1,188,689	\$939,122	\$793,647	\$276,606	\$0	\$3,198,064	\$341,857	\$922.47	90.3%
Aug-17	3,161	\$3,525,402	\$1,659,111	\$936,084	\$902,562	\$276,082	\$0	\$3,773,839	-\$248,437	\$1,106.54	107.0%
Sep-17	3,154	\$3,516,103	\$1,359,765	\$932,821	\$828,090	\$275,470	\$0	\$3,396,146	\$119,957	\$989.43	96.6%
Oct-17	3,125	\$3,485,050	\$2,043,211	\$927,014	\$882,280	\$272,938	-\$75,682	\$4,049,761	-\$564,710	\$1,208.58	116.2%
Nov-17	3,134	\$3,487,125	\$1,426,707	\$922,220	\$867,911	\$273,724	-\$1,520	\$3,489,042	-\$1,917	\$1,025.95	100.1%
Dec-17	3,148	\$1,997,542	\$1,087,503	\$923,518	\$440,918	\$274,946	\$0	\$2,726,885	-\$729,343	\$778.89	136.5%
Jan-18	0	\$0	\$439,750	\$1,303	\$804	\$0	\$0	\$441,857	-\$441,857	\$0.00	0.0%
Feb-18	0	\$0	\$247,831	\$392	\$0	\$0	\$0	\$248,223	-\$248,223	\$0.00	0.0%
Mar-18	0	\$0	-\$3,860	\$0	\$0	\$0	\$0	-\$3,860	\$3,860	\$0.00	0.0%
Apr-18	0	\$0	-\$145,069	\$0	\$0	\$0	\$0	-\$145,069	\$145,069	\$0.00	0.0%
May-18	0	\$0	-\$10,273	\$0	\$0	\$0	\$0	-\$10,273	\$10,273	\$0.00	0.0%
Jun-18	0	\$0	\$4,325	\$0	\$0	\$0	\$0	\$4,325	-\$4,325	\$0.00	0.0%
Jul-18	0	\$0	-\$21,403	\$0	\$0	\$0	\$0	-\$21,403	\$21,403	\$0.00	0.0%
Aug-18	0	\$0	-\$60,627	\$0	\$0	\$0	\$0	-\$60,627	\$60,627	\$0.00	0.0%
2015	4,187	\$42,875,569	\$22,258,882	\$13,681,568	\$10,102,432	\$4,546,489	-\$65,205	\$50,524,166	-\$7,648,597	\$915.11	117.8%
2016	3,630	\$42,279,343	\$20,642,331	\$12,289,322	\$9,665,156	\$3,734,142	-\$848,093	\$45,482,858	-\$3,203,514	\$958.48	107.6%
2017	3,168	\$41,012,620	\$17,106,236	\$11,171,550	\$9,917,078	\$3,320,579	-\$77,202	\$41,438,241	-\$425,621	\$1,002.60	101.0%
2018 YTD	0	\$0	\$450,674	\$1,695	\$804	\$0	\$0	\$453,173	-\$453,173	#DIV/0!	0.0%
Current 12 Months	1,047	\$12,485,820	\$6,367,860	\$3,707,268	\$3,020,003	\$1,097,078	-\$77,202	\$14,115,006	-\$1,629,186	\$1,036.38	113.0%

Data Sources: Enrollment & Premium: Hourglass; Medical Claims & Capitation: Anthem CLR, Anthem MDP; Rx Claims: Envolve, EmpiRx, Anthem MDP; Fixed Cost Schedule: Appendix

- Notes:
1. Fixed Cost Schedule: Appendix
 2. Pooling Points: HMO = \$400,000 and EPO/PPO/HDHP = \$450,000.
 3. EmpiRx PBM replaced Envolve PBM effective 1/1/2018
 4. Fresno converted HMO to EPO plan effective 12/18/2017

**San Joaquin Valley Insurance Authority (SJVIA)
Anthem Blue Cross Premium and Claims Report as of August 2018
County of Fresno - HMO**





**San Joaquin Valley Insurance Authority (SJVIA)
Anthem Blue Cross Premium and Claims Report as of August 2018
County of Fresno - EPO**

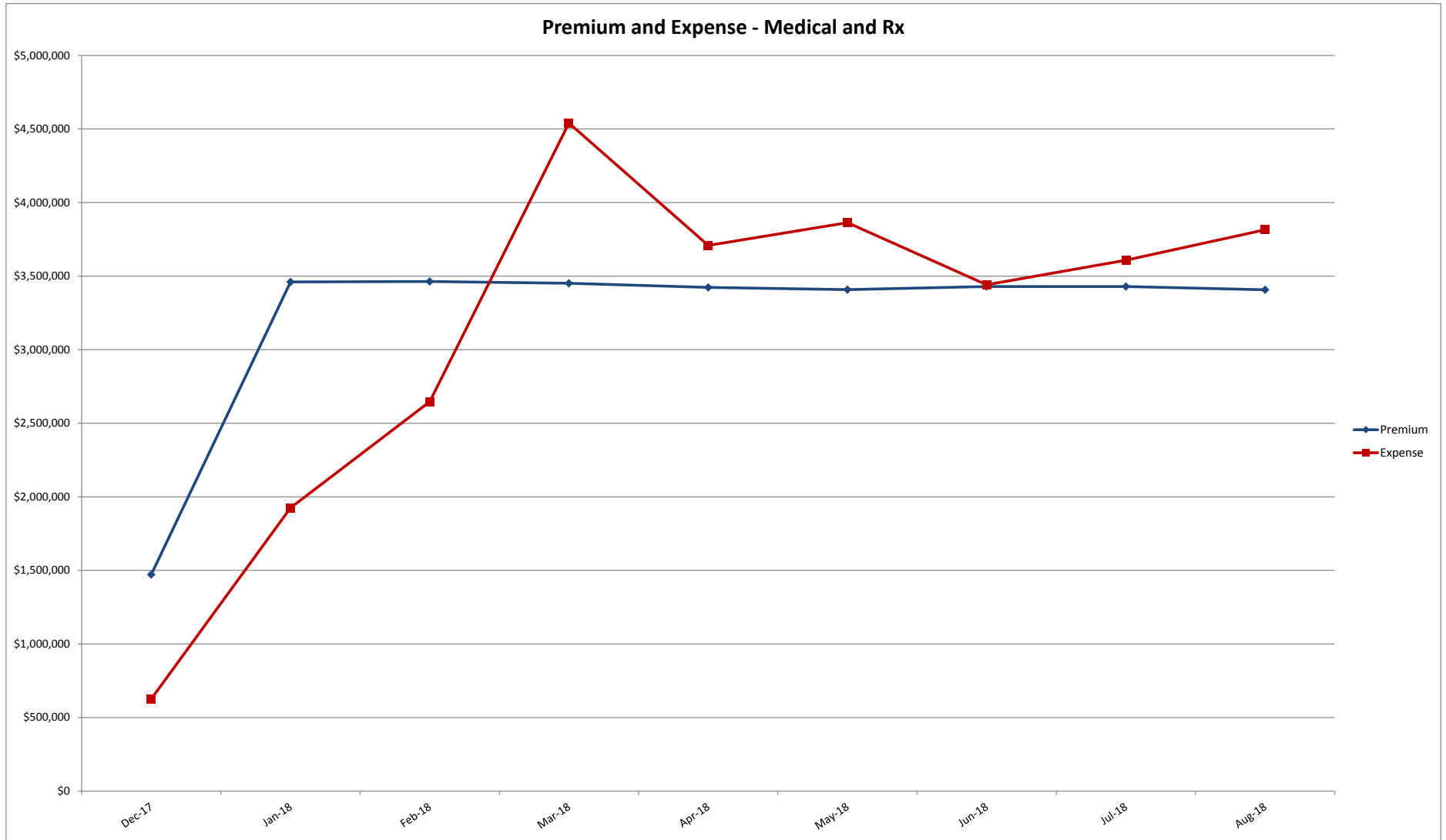
MONTH-YEAR	ENROLLED	FUNDING / PREMIUM	CLAIMS EXPENSE					SURPLUS / (DEFICIT)	AVERAGE CLAIM COST PEPM	TOTAL EXPENSE LOSS RATIO
			MEDICAL	RX	FIXED	POOLED CLAIMS	TOTAL EXPENSE			
Jan-16	0	\$0	\$0	\$0	\$0	\$0	\$0	\$0	\$0.00	0.0%
Feb-16	0	\$0	\$0	\$0	\$0	\$0	\$0	\$0	\$0.00	0.0%
Mar-16	0	\$0	\$0	\$0	\$0	\$0	\$0	\$0	\$0.00	0.0%
Apr-16	0	\$0	\$0	\$0	\$0	\$0	\$0	\$0	\$0.00	0.0%
May-16	0	\$0	\$0	\$0	\$0	\$0	\$0	\$0	\$0.00	0.0%
Jun-16	0	\$0	\$0	\$0	\$0	\$0	\$0	\$0	\$0.00	0.0%
Jul-16	0	\$0	\$0	\$0	\$0	\$0	\$0	\$0	\$0.00	0.0%
Aug-16	0	\$0	\$0	\$0	\$0	\$0	\$0	\$0	\$0.00	0.0%
Sep-16	0	\$0	\$0	\$0	\$0	\$0	\$0	\$0	\$0.00	0.0%
Oct-16	0	\$0	\$0	\$0	\$0	\$0	\$0	\$0	\$0.00	0.0%
Nov-16	0	\$0	\$0	\$0	\$0	\$0	\$0	\$0	\$0.00	0.0%
Dec-16	0	\$0	\$0	\$0	\$0	\$0	\$0	\$0	\$0.00	0.0%
Jan-17	0	\$0	\$0	\$0	\$0	\$0	\$0	\$0	\$0.00	0.0%
Feb-17	0	\$0	\$0	\$0	\$0	\$0	\$0	\$0	\$0.00	0.0%
Mar-17	0	\$0	\$0	\$0	\$0	\$0	\$0	\$0	\$0.00	0.0%
Apr-17	0	\$0	\$0	\$0	\$0	\$0	\$0	\$0	\$0.00	0.0%
May-17	0	\$0	\$0	\$0	\$0	\$0	\$0	\$0	\$0.00	0.0%
Jun-17	0	\$0	\$0	\$0	\$0	\$0	\$0	\$0	\$0.00	0.0%
Jul-17	0	\$0	\$0	\$0	\$0	\$0	\$0	\$0	\$0.00	0.0%
Aug-17	0	\$0	\$0	\$0	\$0	\$0	\$0	\$0	\$0.00	0.0%
Sep-17	0	\$0	\$0	\$0	\$0	\$0	\$0	\$0	\$0.00	0.0%
Oct-17	0	\$0	\$0	\$0	\$0	\$0	\$0	\$0	\$0.00	0.0%
Nov-17	0	\$0	\$0	\$0	\$0	\$0	\$0	\$0	\$0.00	0.0%
Dec-17	3,048	\$1,471,887	\$68,189	\$251,226	\$307,056	\$0	\$626,470	\$845,417	\$104.79	42.6%
Jan-18	3,121	\$3,460,514	\$743,187	\$867,858	\$314,410	\$0	\$1,925,455	\$1,535,059	\$516.20	55.6%
Feb-18	3,122	\$3,463,479	\$1,542,101	\$789,699	\$314,510	\$0	\$2,646,310	\$817,168	\$746.89	76.4%
Mar-18	3112	\$3,451,850	\$3,301,710	\$924,970	\$313,503	\$0	\$4,540,183	-\$1,088,333	\$1,358.19	131.5%
Apr-18	3087	\$3,423,792	\$2,596,335	\$801,696	\$310,984	\$0	\$3,709,015	-\$285,223	\$1,100.76	108.3%
May-18	3074	\$3,408,456	\$2,670,046	\$883,943	\$309,675	\$0	\$3,863,664	-\$455,207	\$1,156.14	113.4%
Jun-18	3098	\$3,429,672	\$2,361,578	\$767,589	\$312,093	\$0	\$3,441,259	-\$11,587	\$1,010.06	100.3%
Jul-18	3101	\$3,429,177	\$2,413,373	\$911,839	\$312,395	-\$29,545	\$3,608,061	-\$178,884	\$1,062.78	105.2%
Aug-18	3080	\$3,407,283	\$2,623,941	\$946,096	\$310,279	-\$64,707	\$3,815,609	-\$408,326	\$1,138.09	112.0%
2015	0	\$0	\$0	\$0	\$0	\$0	\$0	\$0	\$0.00	0.0%
2016	0	\$0	\$0	\$0	\$0	\$0	\$0	\$0	\$0.00	0.0%
2017	3,048	\$1,471,887	\$68,189	\$251,226	\$307,056	\$0	\$626,470	\$845,417	\$104.79	42.6%
2018 YTD	3,099	\$27,474,223	\$18,252,271	\$6,893,689	\$2,497,848	-\$94,252	\$27,549,556	-\$75,333	\$1,010.35	100.3%
Current 12 Months	2,320	\$28,946,110	\$18,320,460	\$7,144,915	\$2,804,904	-\$94,252	\$28,176,027	\$770,084	\$911.22	97.3%

Data Sources: Enrollment & Premium: Hourglass; Medical Claims & Capitation: Anthem CLR, Anthem MDP; Rx Claims: Envolve, EmpiRx, Anthem MDP; Fixed Cost Schedule: Appendix

Notes:

1. Fixed Cost Schedule: Appendix
2. Pooling Points: HMO = \$400,000 and EPO/PPO/HDHP = \$450,000.
3. EmpiRx PBM replaced Envolve PBM effective 1/1/2018
4. Fresno converted HMO to EPO plan effective 12/18/2017

**San Joaquin Valley Insurance Authority (SJVIA)
Anthem Blue Cross Premium and Claims Report as of August 2018
County of Fresno - EPO**





**San Joaquin Valley Insurance Authority (SJVIA)
Anthem Blue Cross Premium and Claims Report as of August 2018
County of Fresno - PPO**

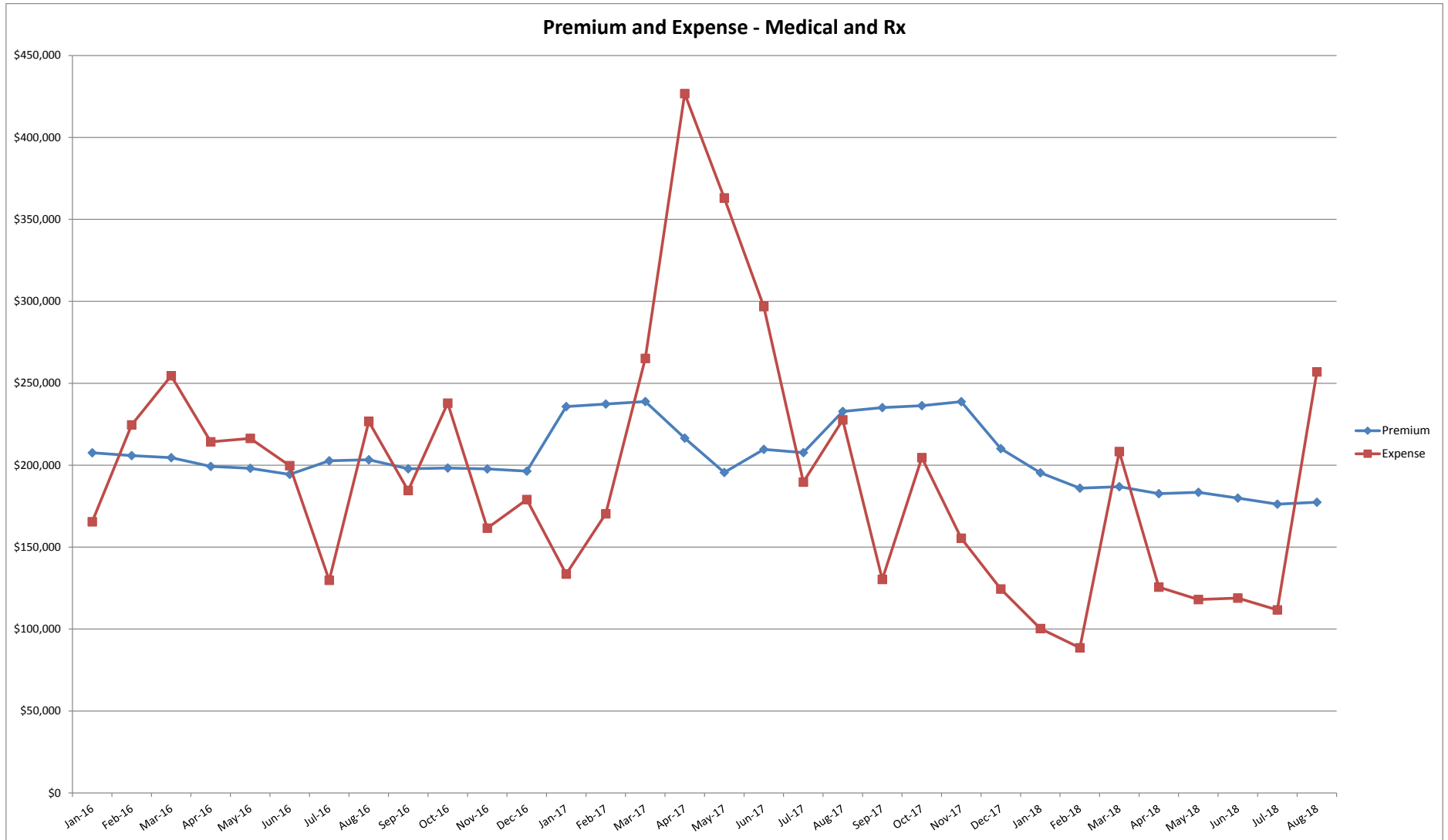
MONTH-YEAR	ENROLLED	FUNDING / PREMIUM	CLAIMS EXPENSE					SURPLUS / (DEFICIT)	AVERAGE CLAIM COST PEPM	TOTAL EXPENSE LOSS RATIO
			MEDICAL	RX	FIXED	POOLED CLAIMS	TOTAL EXPENSE			
Jan-16	194	\$207,541	\$101,618	\$51,295	\$12,523	\$0	\$165,436	\$42,105	\$788.21	79.7%
Feb-16	194	\$205,894	\$138,259	\$73,767	\$12,523	\$0	\$224,548	-\$18,654	\$1,092.92	109.1%
Mar-16	193	\$204,586	\$183,848	\$58,310	\$12,458	\$0	\$254,616	-\$50,031	\$1,254.70	124.5%
Apr-16	186	\$199,265	\$140,415	\$61,828	\$12,006	\$0	\$214,250	-\$14,984	\$1,087.33	107.5%
May-16	184	\$198,062	\$135,367	\$69,140	\$11,877	\$0	\$216,384	-\$18,322	\$1,111.45	109.3%
Jun-16	181	\$194,369	\$126,150	\$61,863	\$11,684	\$0	\$199,696	-\$5,328	\$1,038.74	102.7%
Jul-16	190	\$202,712	\$60,724	\$56,757	\$12,265	\$0	\$129,746	\$72,966	\$618.32	64.0%
Aug-16	191	\$203,294	\$139,063	\$75,277	\$12,329	\$0	\$226,669	-\$23,375	\$1,122.20	111.5%
Sep-16	187	\$197,808	\$122,052	\$50,396	\$12,071	\$0	\$184,519	\$13,289	\$922.18	93.3%
Oct-16	189	\$198,250	\$178,663	\$47,042	\$12,200	\$0	\$237,904	-\$39,654	\$1,194.20	120.0%
Nov-16	188	\$197,723	\$83,197	\$66,277	\$12,135	\$0	\$161,609	\$36,114	\$795.07	81.7%
Dec-16	187	\$196,414	\$119,597	\$47,371	\$12,071	\$0	\$179,038	\$17,375	\$892.87	91.2%
Jan-17	214	\$235,804	\$69,640	\$49,735	\$14,160	\$0	\$133,535	\$102,268	\$557.83	56.6%
Feb-17	216	\$237,336	\$90,222	\$65,802	\$14,293	\$0	\$170,316	\$67,019	\$722.33	71.8%
Mar-17	220	\$238,848	\$181,844	\$68,720	\$14,557	\$0	\$265,121	-\$26,274	\$1,138.93	111.0%
Apr-17	201	\$216,533	\$368,860	\$44,582	\$13,300	\$0	\$426,742	-\$210,210	\$2,056.93	197.1%
May-17	174	\$195,554	\$280,427	\$71,203	\$11,514	\$0	\$363,144	-\$167,590	\$2,020.86	185.7%
Jun-17	185	\$209,687	\$228,069	\$56,514	\$12,241	\$0	\$296,825	-\$87,138	\$1,538.29	141.6%
Jul-17	184	\$207,686	\$128,962	\$48,594	\$12,175	\$0	\$189,731	\$17,955	\$964.98	91.4%
Aug-17	219	\$232,775	\$137,094	\$76,042	\$14,491	\$0	\$227,627	\$5,148	\$973.22	97.8%
Sep-17	219	\$235,182	\$65,554	\$50,263	\$14,491	\$0	\$130,309	\$104,873	\$528.85	55.4%
Oct-17	219	\$236,370	\$118,638	\$71,444	\$14,491	\$0	\$204,573	\$31,796	\$867.95	86.5%
Nov-17	219	\$238,773	\$70,677	\$70,234	\$14,491	\$0	\$155,402	\$83,371	\$643.43	65.1%
Dec-17	168	\$210,141	\$48,983	\$64,385	\$11,117	\$0	\$124,485	\$85,656	\$674.81	59.2%
Jan-18	150	\$195,387	\$45,533	\$41,798	\$12,974	\$0	\$100,304	\$95,082	\$582.20	51.3%
Feb-18	144	\$186,014	\$47,407	\$28,716	\$12,455	\$0	\$88,578	\$97,436	\$528.63	47.6%
Mar-18	145	\$186,862	\$152,687	\$43,074	\$12,541	\$0	\$208,302	-\$21,440	\$1,350.07	111.5%
Apr-18	141	\$182,600	\$64,231	\$49,226	\$12,195	\$0	\$125,653	\$56,947	\$804.66	68.8%
May-18	142	\$183,448	\$57,573	\$48,168	\$12,282	\$0	\$118,023	\$65,425	\$744.66	64.3%
Jun-18	140	\$179,930	\$69,671	\$37,164	\$12,109	\$0	\$118,943	\$60,987	\$763.10	66.1%
Jul-18	137	\$176,227	\$44,881	\$54,967	\$11,849	\$0	\$111,697	\$64,530	\$728.81	63.4%
Aug-18	138	\$177,364	\$201,540	\$43,465	\$11,936	\$0	\$256,941	-\$79,576	\$1,775.40	144.9%
2015	190	\$2,293,437	\$1,703,479	\$775,586	\$160,307	\$0	\$2,639,372	-\$345,935	\$1,087.31	115.1%
2016	189	\$2,405,918	\$1,528,953	\$719,323	\$146,141	\$0	\$2,394,417	\$11,501	\$993.05	99.5%
2017	203	\$2,694,687	\$1,788,970	\$737,518	\$161,322	\$0	\$2,687,811	\$6,876	\$1,036.30	99.7%
2018 YTD	142	\$1,467,832	\$683,523	\$346,577	\$98,339	\$0	\$1,128,439	\$339,392	\$905.98	76.9%
Current 12 Months	164	\$2,388,296	\$987,375	\$602,904	\$152,929	\$0	\$1,743,208	\$645,088	\$810.54	73.0%

Data Sources: Enrollment & Premium: Hourglass; Medical Claims & Capitation: Anthem CLR, Anthem MDP; Rx Claims: Envolve, EmpiRx, Anthem MDP; Fixed Cost Schedule: Appendix

Notes:

1. Fixed Cost Schedule: Appendix
2. Pooling Points: HMO = \$400,000 and EPO/PPO/HDHP = \$450,000.
3. EmpiRx PBM replaced Envolve PBM effective 1/1/2018
4. Fresno converted HMO to EPO plan effective 12/18/2017

**San Joaquin Valley Insurance Authority (SJVIA)
Anthem Blue Cross Premium and Claims Report as of August 2018
County of Fresno - PPO**





**San Joaquin Valley Insurance Authority (SJVIA)
Anthem Blue Cross Premium and Claims Report as of August 2018
County of Fresno - HDHP**

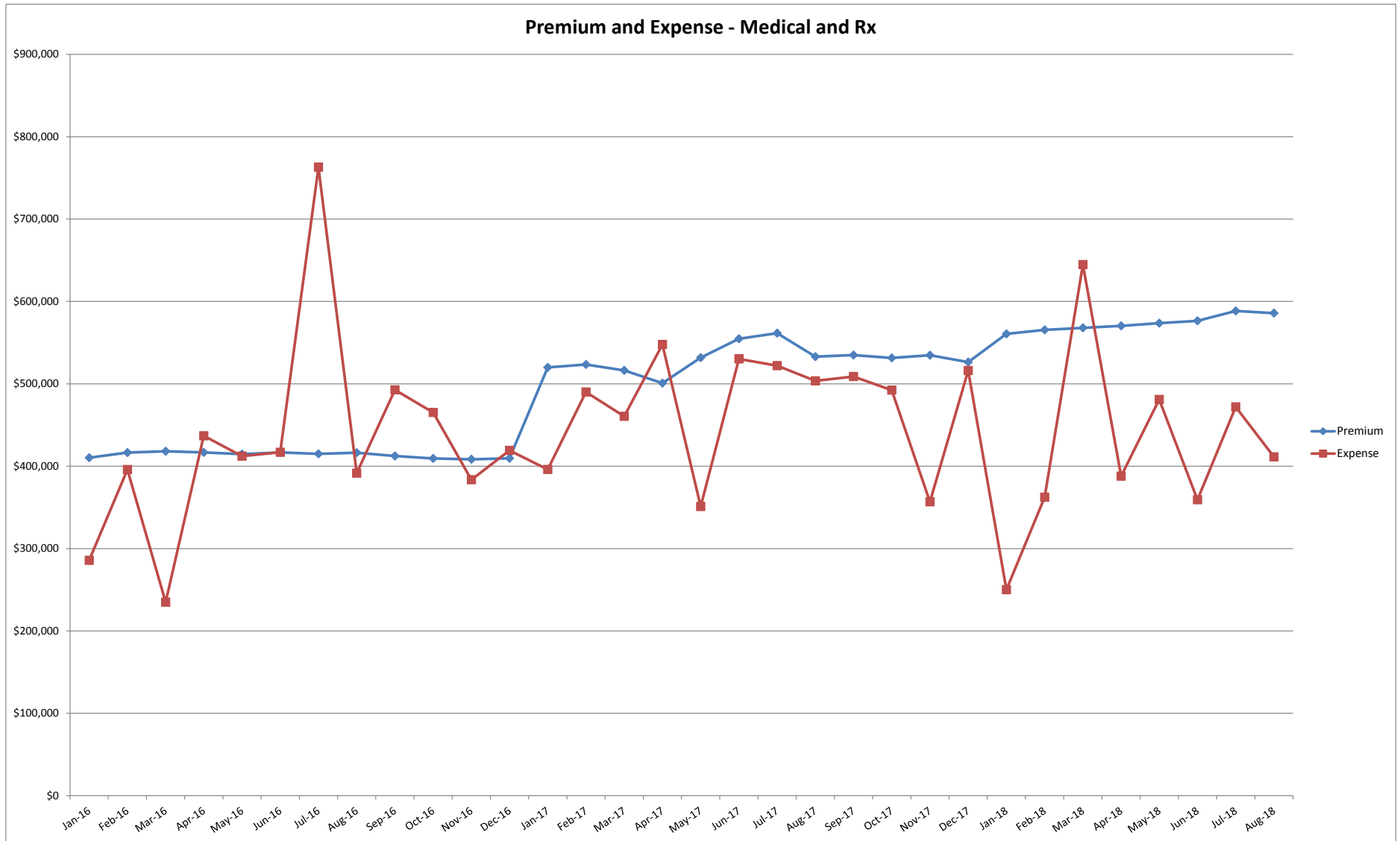
MONTH-YEAR	ENROLLED	FUNDING / PREMIUM	CLAIMS EXPENSE				SURPLUS / (DEFICIT)	AVERAGE CLAIM COST PEPM	TOTAL EXPENSE LOSS RATIO	
			MEDICAL	RX	FIXED	POOLED CLAIMS				TOTAL EXPENSE
Jan-16	640	\$410,258	\$183,027	\$61,273	\$41,312	\$0	\$285,612	\$124,646	\$381.72	69.6%
Feb-16	648	\$416,589	\$313,508	\$40,463	\$41,828	\$0	\$395,799	\$20,790	\$546.25	95.0%
Mar-16	654	\$418,099	\$128,205	\$64,474	\$42,216	\$0	\$234,895	\$183,204	\$294.62	56.2%
Apr-16	656	\$416,762	\$297,853	\$96,720	\$42,345	\$0	\$436,918	-\$20,155	\$601.48	104.8%
May-16	655	\$414,592	\$279,814	\$90,028	\$42,280	\$0	\$412,122	\$2,470	\$564.64	99.4%
Jun-16	660	\$416,718	\$263,101	\$111,232	\$42,603	\$0	\$416,936	-\$218	\$567.17	100.1%
Jul-16	660	\$414,980	\$588,846	\$131,399	\$42,603	\$0	\$762,848	-\$347,868	\$1,091.28	183.8%
Aug-16	663	\$416,396	\$265,196	\$83,568	\$42,797	\$0	\$391,561	\$24,836	\$526.04	94.0%
Sep-16	655	\$412,298	\$304,759	\$145,567	\$42,280	\$0	\$492,606	-\$80,308	\$687.52	119.5%
Oct-16	652	\$409,376	\$316,856	\$106,210	\$42,087	\$0	\$465,153	-\$55,777	\$648.87	113.6%
Nov-16	647	\$408,313	\$240,752	\$100,943	\$41,764	\$0	\$383,459	\$24,854	\$528.12	93.9%
Dec-16	650	\$409,523	\$230,258	\$146,962	\$41,958	\$0	\$419,178	-\$9,655	\$580.34	102.4%
Jan-17	742	\$519,928	\$300,978	\$45,990	\$49,098	\$0	\$396,066	\$123,862	\$467.61	76.2%
Feb-17	746	\$523,429	\$389,747	\$50,969	\$49,363	\$0	\$490,079	\$33,351	\$590.77	93.6%
Mar-17	736	\$516,317	\$291,413	\$120,319	\$48,701	\$0	\$460,433	\$55,884	\$559.42	89.2%
Apr-17	714	\$500,909	\$416,805	\$83,704	\$47,245	\$0	\$547,754	-\$46,846	\$700.99	109.4%
May-17	761	\$531,698	\$183,809	\$116,820	\$50,355	\$0	\$350,984	\$180,714	\$395.04	66.0%
Jun-17	795	\$554,691	\$337,083	\$140,573	\$52,605	\$0	\$530,261	\$24,430	\$600.83	95.6%
Jul-17	810	\$561,522	\$339,393	\$128,974	\$53,598	\$0	\$521,965	\$39,558	\$578.23	93.0%
Aug-17	771	\$533,044	\$308,915	\$143,600	\$51,017	\$0	\$503,532	\$29,512	\$586.92	94.5%
Sep-17	775	\$534,906	\$277,334	\$180,282	\$51,282	\$0	\$508,898	\$26,008	\$590.47	95.1%
Oct-17	771	\$531,342	\$288,740	\$152,604	\$51,017	\$0	\$492,361	\$38,981	\$572.43	92.7%
Nov-17	781	\$534,747	\$163,273	\$141,858	\$51,679	\$0	\$356,810	\$177,937	\$390.69	66.7%
Dec-17	721	\$526,419	\$314,263	\$154,140	\$47,709	\$0	\$516,112	\$10,307	\$649.66	98.0%
Jan-18	743	\$560,552	\$115,112	\$70,628	\$64,262	\$0	\$250,002	\$310,550	\$249.99	44.6%
Feb-18	747	\$565,458	\$230,485	\$67,174	\$64,608	\$0	\$362,267	\$203,191	\$398.47	64.1%
Mar-18	751	\$567,983	\$466,698	\$113,171	\$64,954	\$0	\$644,823	-\$76,840	\$772.13	113.5%
Apr-18	754	\$570,419	\$226,826	\$95,884	\$65,213	\$0	\$387,923	\$182,496	\$428.00	68.0%
May-18	761	\$573,653	\$297,446	\$117,765	\$65,819	\$0	\$481,030	\$92,623	\$545.61	83.9%
Jun-18	768	\$576,408	\$149,209	\$143,545	\$66,424	\$0	\$359,178	\$217,230	\$381.19	62.3%
Jul-18	789	\$588,444	\$282,745	\$120,962	\$68,241	\$0	\$471,948	\$116,496	\$511.67	80.2%
Aug-18	788	\$585,742	\$211,205	\$131,894	\$68,154	\$0	\$411,253	\$174,489	\$435.40	70.2%
2015	583	\$4,355,365	\$2,279,638	\$934,209	\$492,240	\$0	\$3,706,087	\$649,277	\$459.06	85.1%
2016	653	\$4,963,904	\$3,412,175	\$1,178,839	\$513,858	\$0	\$5,104,872	-\$133,182	\$585.59	102.8%
2017	760	\$6,368,952	\$3,611,753	\$1,459,833	\$603,669	\$0	\$5,675,255	\$693,697	\$555.91	89.1%
2018 YTD	763	\$4,588,660	\$1,979,726	\$861,023	\$527,675	\$0	\$3,368,424	\$1,220,235	\$465.62	73.4%
Current 12 Months	762	\$6,716,073	\$3,023,336	\$1,489,907	\$729,362	\$0	\$5,242,605	\$1,473,468	\$493.30	78.1%

Data Sources: Enrollment & Premium: Hourglass; Medical Claims & Capitation: Anthem CLR, Anthem MDP; Rx Claims: Envolve, EmpiRx, Anthem MDP; Fixed Cost Schedule: Appendix

Notes:

1. Fixed Cost Schedule: Appendix
2. Pooling Points: HMO = \$400,000 and EPO/PPO/HDHP = \$450,000.
3. EmpiRx PBM replaced Envolve PBM effective 1/1/2018
4. Fresno converted HMO to EPO plan effective 12/18/2017

San Joaquin Valley Insurance Authority (SJVIA)
Anthem Blue Cross Premium and Claims Report as of August 2018
County of Fresno - HDHP





**San Joaquin Valley Insurance Authority (SJVIA)
Anthem Blue Cross Premium and Claims Report as of August 2018
County of Tulare - All Medical**

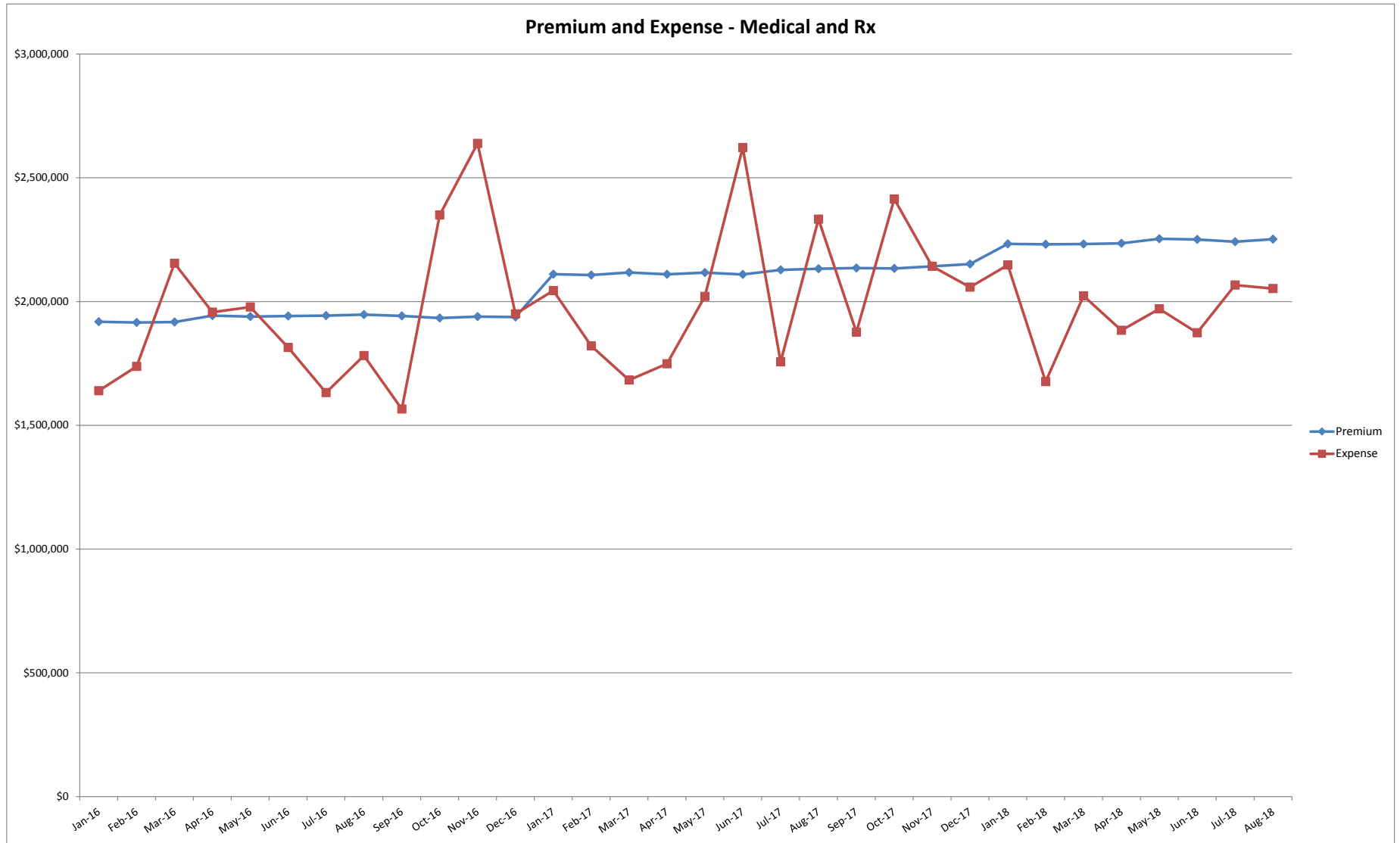
MONTH-YEAR	ENROLLED	FUNDING / PREMIUM	CLAIMS EXPENSE						SURPLUS / (DEFICIT)	AVERAGE CLAIM COST PEPM	TOTAL EXPENSE LOSS RATIO
			MEDICAL	CAPITATION	RX	FIXED	POOLED CLAIMS	TOTAL EXPENSE			
Jan-16	2,766	\$1,918,242	\$920,343	\$74,569	\$460,100	\$184,666	\$0	\$1,639,678	\$278,565	\$526.03	85.5%
Feb-16	2,769	\$1,915,349	\$909,422	\$75,036	\$568,546	\$184,860	\$0	\$1,737,864	\$177,485	\$560.85	90.7%
Mar-16	2,770	\$1,917,509	\$1,323,065	\$72,539	\$573,783	\$184,925	\$0	\$2,154,311	-\$236,802	\$710.97	112.3%
Apr-16	2,817	\$1,943,502	\$1,210,456	\$74,400	\$484,179	\$188,001	\$0	\$1,957,036	-\$13,534	\$627.99	100.7%
May-16	2,806	\$1,938,954	\$1,175,116	\$74,867	\$540,390	\$187,227	\$0	\$1,977,600	-\$38,646	\$638.05	102.0%
Jun-16	2,812	\$1,941,450	\$1,052,925	\$71,450	\$502,785	\$187,636	\$0	\$1,814,795	\$126,654	\$578.65	93.5%
Jul-16	2,817	\$1,943,391	\$884,484	\$74,195	\$485,586	\$188,001	\$0	\$1,632,266	\$311,125	\$512.70	84.0%
Aug-16	2,822	\$1,947,517	\$925,254	\$68,299	\$599,698	\$188,408	\$0	\$1,781,659	\$165,858	\$564.58	91.5%
Sep-16	2,820	\$1,941,858	\$738,393	\$74,239	\$564,819	\$188,321	\$0	\$1,565,772	\$376,086	\$488.46	80.6%
Oct-16	2,812	\$1,933,637	\$1,478,516	\$72,068	\$611,072	\$187,869	\$0	\$2,349,525	-\$415,888	\$768.73	121.5%
Nov-16	2,825	\$1,939,416	\$1,811,697	\$70,350	\$567,997	\$188,602	\$0	\$2,638,646	-\$699,229	\$867.27	136.1%
Dec-16	2,823	\$1,937,203	\$1,083,307	\$71,670	\$606,495	\$188,409	\$0	\$1,949,882	-\$12,679	\$623.97	100.7%
Jan-17	2,824	\$2,110,561	\$1,261,565	\$0	\$595,840	\$186,885	\$0	\$2,044,291	\$66,271	\$657.72	96.9%
Feb-17	2,814	\$2,107,318	\$1,097,844	\$0	\$536,533	\$186,224	\$0	\$1,820,600	\$286,718	\$580.80	86.4%
Mar-17	2,825	\$2,117,411	\$924,126	\$0	\$571,707	\$186,951	\$0	\$1,682,784	\$434,626	\$529.50	79.5%
Apr-17	2,816	\$2,110,125	\$1,032,065	\$0	\$530,547	\$186,356	\$0	\$1,748,968	\$361,157	\$554.90	82.9%
May-17	2,829	\$2,117,202	\$1,311,089	\$0	\$522,523	\$187,216	\$0	\$2,020,829	\$96,374	\$648.15	95.4%
Jun-17	2,822	\$2,109,284	\$1,799,781	\$0	\$635,657	\$186,753	\$0	\$2,622,191	-\$512,907	\$863.02	124.3%
Jul-17	2,851	\$2,128,126	\$1,001,046	\$0	\$566,630	\$188,672	\$0	\$1,756,347	\$371,779	\$549.87	82.5%
Aug-17	2,853	\$2,132,516	\$1,440,700	\$0	\$703,354	\$188,804	\$0	\$2,332,858	-\$200,342	\$751.51	109.4%
Sep-17	2,866	\$2,135,392	\$967,631	\$0	\$718,838	\$189,664	\$0	\$1,876,134	\$259,259	\$588.44	87.9%
Oct-17	2,861	\$2,133,836	\$1,558,013	\$0	\$666,865	\$189,334	\$0	\$2,414,211	-\$280,375	\$777.66	113.1%
Nov-17	2,874	\$2,142,485	\$1,378,838	\$0	\$573,506	\$190,194	\$0	\$2,142,538	-\$53	\$679.31	100.0%
Dec-17	2,890	\$2,151,414	\$1,175,436	\$0	\$691,203	\$191,252	\$0	\$2,057,892	\$93,522	\$645.90	95.7%
Jan-18	2,906	\$2,233,054	\$1,310,194	\$0	\$606,636	\$230,518	\$0	\$2,147,349	\$85,706	\$659.61	96.2%
Feb-18	2,902	\$2,231,530	\$819,668	\$0	\$626,710	\$230,201	\$0	\$1,676,579	\$554,951	\$498.41	75.1%
Mar-18	2,905	\$2,232,260	\$1,146,872	\$0	\$645,723	\$230,439	\$0	\$2,023,034	\$209,226	\$617.07	90.6%
Apr-18	2,914	\$2,235,436	\$1,016,951	\$0	\$635,692	\$231,153	\$0	\$1,883,795	\$351,641	\$567.14	84.3%
May-18	2,949	\$2,253,600	\$1,079,799	\$0	\$656,547	\$233,929	\$0	\$1,970,275	\$283,325	\$588.79	87.4%
Jun-18	2,949	\$2,250,990	\$992,192	\$0	\$648,064	\$233,929	\$0	\$1,874,185	\$376,805	\$556.21	83.3%
Jul-18	2,938	\$2,241,803	\$1,160,748	\$0	\$672,851	\$233,042	\$0	\$2,066,641	\$175,161	\$624.10	92.2%
Aug-18	2,951	\$2,251,754	\$1,124,526	\$0	\$693,695	\$234,073	\$0	\$2,052,294	\$199,460	\$616.14	91.1%
2015	2,774	\$21,998,530	\$14,444,032	\$947,923	\$5,874,825	\$2,418,678	-\$219,668	\$23,465,790	-\$1,467,260	\$632.35	106.7%
2016	2,805	\$23,218,029	\$13,512,978	\$873,682	\$6,565,449	\$2,246,924	\$0	\$23,199,033	\$18,996	\$622.48	99.9%
2017	2,844	\$25,495,670	\$14,948,135	\$0	\$7,313,202	\$2,258,305	\$0	\$24,519,642	\$976,028	\$652.35	96.2%
2018 YTD	2,927	\$17,930,428	\$8,650,950	\$0	\$5,185,919	\$1,857,284	\$0	\$15,694,153	\$2,236,275	\$590.97	87.5%
Current 12 Months	2,909	\$26,493,554	\$13,730,868	\$0	\$7,836,331	\$2,617,728	\$0	\$24,184,927	\$2,308,628	\$617.88	91.3%

Data Sources: Enrollment & Premium: Hourglass; Medical Claims & Capitation: Anthem CLR, Anthem MDP; Rx Claims: Envolve, EmpiRx, Anthem MDP; Fixed Cost Schedule: Appendix

Notes:

1. Fixed Cost Schedule: Appendix
2. Pooling Points: HMO = \$400,000 and EPO/PPO/HDHP = \$450,000.
3. EmpiRx PBM replaced Envolve PBM effective 1/1/2018

San Joaquin Valley Insurance Authority (SJVIA)
Anthem Blue Cross Premium and Claims Report as of August 2018
County of Tulare - All Medical





**San Joaquin Valley Insurance Authority (SJVIA)
Anthem Blue Cross Premium and Claims Report as of August 2018
County of Tulare - HMO**

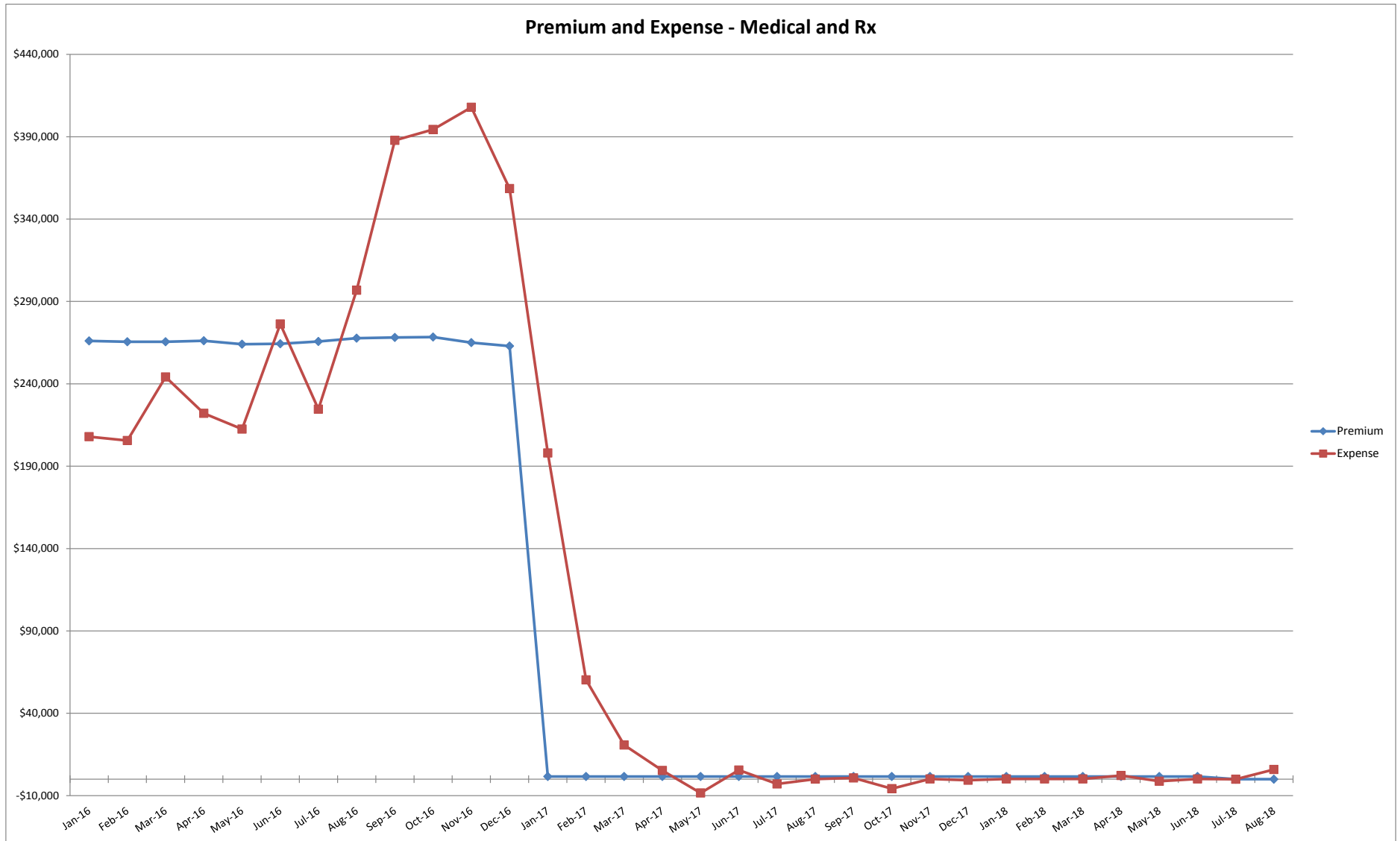
MONTH-YEAR	ENROLLED	FUNDING / PREMIUM	CLAIMS EXPENSE					SURPLUS / (DEFICIT)	AVERAGE CLAIM COST PEPM	TOTAL EXPENSE LOSS RATIO	
			MEDICAL	CAPITATION	RX	FIXED	POOLED CLAIMS				TOTAL EXPENSE
Jan-16	289	\$266,033	\$68,339	\$74,569	\$40,188	\$24,776	\$0	\$207,872	\$58,161	\$633.55	78.1%
Feb-16	289	\$265,507	\$59,035	\$75,036	\$46,727	\$24,776	\$0	\$205,574	\$59,933	\$625.60	77.4%
Mar-16	289	\$265,507	\$90,215	\$72,539	\$56,647	\$24,776	\$0	\$244,176	\$21,330	\$759.17	92.0%
Apr-16	291	\$266,108	\$71,342	\$74,400	\$51,369	\$24,947	\$0	\$222,059	\$44,049	\$677.36	83.4%
May-16	288	\$264,055	\$72,036	\$74,867	\$40,911	\$24,690	\$0	\$212,505	\$51,550	\$652.13	80.5%
Jun-16	289	\$264,355	\$124,170	\$71,450	\$55,944	\$24,776	\$0	\$276,339	-\$11,984	\$870.46	104.5%
Jul-16	291	\$265,726	\$77,567	\$74,195	\$47,881	\$24,947	\$0	\$224,590	\$41,135	\$686.06	84.5%
Aug-16	295	\$267,698	\$153,032	\$68,299	\$50,196	\$25,290	\$0	\$296,817	-\$29,119	\$920.43	110.9%
Sep-16	297	\$268,158	\$163,002	\$74,239	\$125,064	\$25,462	\$0	\$387,766	-\$119,609	\$1,219.88	144.6%
Oct-16	300	\$268,395	\$171,644	\$72,068	\$124,997	\$25,719	\$0	\$394,429	-\$126,033	\$1,229.03	147.0%
Nov-16	295	\$264,973	\$185,862	\$70,350	\$126,345	\$25,290	\$0	\$407,848	-\$142,874	\$1,296.81	153.9%
Dec-16	292	\$262,920	\$133,580	\$71,670	\$128,271	\$25,033	\$0	\$358,555	-\$95,635	\$1,142.20	136.4%
Jan-17	1	\$1,593	\$197,867	\$0	\$19	\$87	\$0	\$197,973	-\$196,381	\$197,885.93	12429.6%
Feb-17	1	\$1,593	\$60,175	\$0	\$0	\$87	\$0	\$60,262	-\$58,669	\$60,174.67	3783.5%
Mar-17	1	\$1,593	\$20,631	\$0	\$0	\$87	\$0	\$20,719	-\$19,126	\$20,631.20	1300.8%
Apr-17	1	\$1,593	\$5,165	\$0	\$0	\$87	\$0	\$5,252	-\$3,660	\$5,165.00	329.8%
May-17	1	\$1,593	-\$8,486	\$0	\$0	\$87	\$0	-\$8,398	\$9,991	-\$8,485.61	-527.3%
Jun-17	1	\$1,593	\$5,438	\$0	\$0	\$87	\$0	\$5,526	-\$3,933	\$5,438.37	346.9%
Jul-17	1	\$1,593	-\$2,965	\$0	\$0	\$87	\$0	-\$2,878	\$4,471	-\$2,965.34	-180.7%
Aug-17	1	\$1,593	\$0	\$0	\$0	\$87	\$0	\$87	\$1,505	\$0.00	5.5%
Sep-17	1	\$1,593	\$696	\$0	\$0	\$87	\$0	\$783	\$809	\$696.00	49.2%
Oct-17	1	\$1,593	-\$5,875	\$0	\$0	\$87	\$0	-\$5,788	\$7,380	-\$5,875.00	-363.4%
Nov-17	1	\$1,593	\$39	\$0	\$0	\$87	\$0	\$126	\$1,466	\$39.00	7.9%
Dec-17	1	\$1,593	-\$754	\$0	\$0	\$87	\$0	-\$667	\$2,259	-\$754.00	-41.9%
Jan-18	1	\$1,593	\$0	\$0	\$0	\$94	\$0	\$94	\$1,499	\$0.00	0.0%
Feb-18	1	\$1,593	\$0	\$0	\$0	\$94	\$0	\$94	\$1,499	\$0.00	0.0%
Mar-18	1	\$1,593	\$0	\$0	\$0	\$94	\$0	\$94	\$1,499	\$0.00	0.0%
Apr-18	1	\$1,593	\$2,160	\$0	\$0	\$94	\$0	\$2,254	-\$661	\$2,160.00	141.5%
May-18	1	\$1,593	-\$1,326	\$0	\$0	\$94	\$0	-\$1,232	\$2,825	-\$1,326.00	-77.4%
Jun-18	1	\$1,593	\$0	\$0	\$0	\$94	\$0	\$94	\$1,499	\$0.00	5.9%
Jul-18	0	\$0	-\$20	\$0	\$0	\$0	\$0	-\$20	\$20	#DIV/0!	#DIV/0!
Aug-18	0	\$0	\$5,911	\$0	\$0	\$0	\$0	\$5,911	-\$5,911	#DIV/0!	#DIV/0!
2015	324	\$3,113,449	\$2,576,592	\$947,923	\$596,111	\$351,916	-\$219,668	\$4,252,873	-\$1,139,424	\$1,003.07	136.6%
2016	292	\$3,189,435	\$1,369,824	\$873,682	\$894,540	\$300,484	\$0	\$3,438,530	-\$249,094	\$895.31	107.8%
2017	1	\$19,113	\$271,932	\$0	\$19	\$1,048	\$0	\$272,998	-\$253,885	\$22,662.52	1428.3%
2018 YTD	1	\$9,557	\$6,725	\$0	\$0	\$561	\$0	\$7,286	\$2,270	\$1,120.83	76.2%
Current 12 Months	1	\$15,928	\$831	\$0	\$0	\$911	\$0	\$1,742	\$14,186	\$83.10	10.9%

Data Sources: Enrollment & Premium: Hourglass; Medical Claims & Capitation: Anthem CLR, Anthem MDP; Rx Claims: Envolve, EmpiRx, Anthem MDP; Fixed Cost Schedule: Appendix

Notes:

1. Fixed Cost Schedule: Appendix
2. Pooling Points: HMO = \$400,000 and EPO/PPO/HDHP = \$450,000.
3. EmpiRx PBM replaced Envolve PBM effective 1/1/2018

San Joaquin Valley Insurance Authority (SJVIA)
Anthem Blue Cross Premium and Claims Report as of August 2018
County of Tulare - HMO





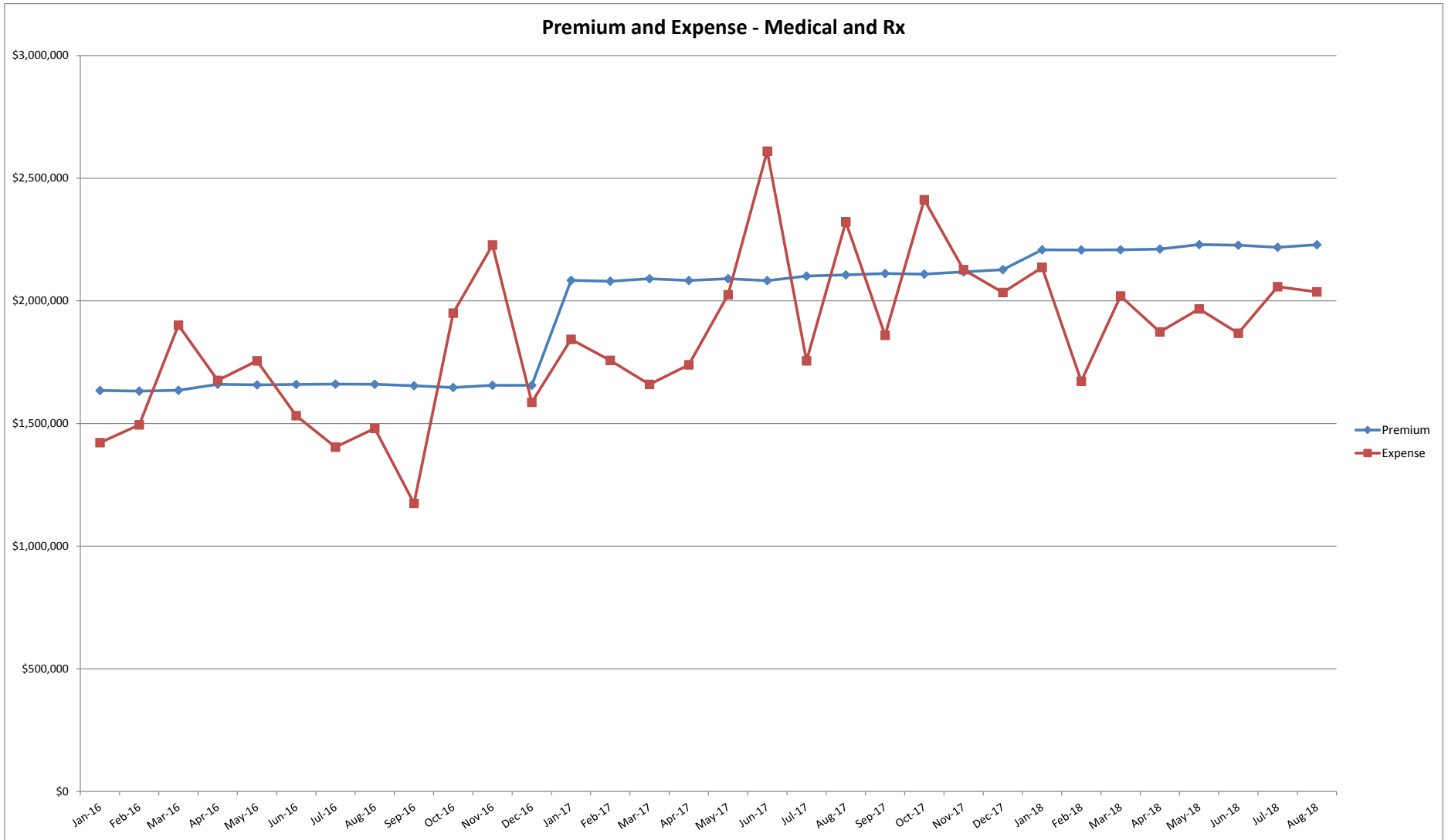
**San Joaquin Valley Insurance Authority (SJVIA)
Anthem Blue Cross Premium and Claims Report as of August 2018
County of Tulare - PPO**

MONTH-YEAR	ENROLLED	FUNDING / PREMIUM	CLAIMS EXPENSE				SURPLUS / (DEFICIT)	AVERAGE CLAIM COST PEPM	TOTAL EXPENSE LOSS RATIO	
			MEDICAL	RX	FIXED	POOLED CLAIMS				TOTAL EXPENSE
Jan-16	2,445	\$1,634,557	\$844,648	\$419,202	\$157,825	\$0	\$1,421,675	\$212,882	\$516.91	87.0%
Feb-16	2,448	\$1,632,189	\$814,535	\$521,819	\$158,018	\$0	\$1,494,373	\$137,817	\$545.90	91.6%
Mar-16	2,451	\$1,635,335	\$1,225,617	\$517,136	\$158,212	\$0	\$1,900,965	-\$265,630	\$711.04	116.2%
Apr-16	2,495	\$1,660,234	\$1,082,260	\$432,397	\$161,052	\$0	\$1,675,709	-\$15,475	\$607.08	100.9%
May-16	2,487	\$1,657,740	\$1,095,985	\$499,089	\$160,536	\$0	\$1,755,610	-\$97,870	\$641.36	105.9%
Jun-16	2,491	\$1,659,442	\$925,363	\$446,034	\$160,794	\$0	\$1,532,191	\$127,250	\$550.54	92.3%
Jul-16	2,495	\$1,660,506	\$805,929	\$437,009	\$161,052	\$0	\$1,403,991	\$256,515	\$498.17	84.6%
Aug-16	2,493	\$1,660,172	\$769,888	\$549,001	\$160,923	\$0	\$1,479,812	\$180,360	\$529.04	89.1%
Sep-16	2,489	\$1,654,054	\$574,578	\$439,054	\$160,665	\$0	\$1,174,297	\$479,758	\$407.24	71.0%
Oct-16	2,479	\$1,646,580	\$1,304,493	\$485,461	\$160,019	\$0	\$1,949,973	-\$303,393	\$722.05	118.4%
Nov-16	2,497	\$1,655,781	\$1,625,534	\$440,989	\$161,181	\$0	\$2,227,704	-\$571,923	\$827.60	134.5%
Dec-16	2,498	\$1,655,621	\$947,450	\$477,450	\$161,246	\$0	\$1,586,146	\$69,475	\$570.42	95.8%
Jan-17	2,785	\$2,083,764	\$1,063,327	\$595,773	\$184,283	\$0	\$1,843,383	\$240,381	\$595.73	88.5%
Feb-17	2,774	\$2,079,970	\$1,037,311	\$536,528	\$183,556	\$0	\$1,757,394	\$322,576	\$567.35	84.5%
Mar-17	2,785	\$2,090,062	\$903,425	\$571,682	\$184,283	\$0	\$1,659,390	\$430,672	\$529.66	79.4%
Apr-17	2,777	\$2,083,327	\$1,025,542	\$529,915	\$183,754	\$0	\$1,739,211	\$344,117	\$560.12	83.5%
May-17	2,790	\$2,090,405	\$1,317,845	\$522,476	\$184,614	\$0	\$2,024,935	\$65,470	\$659.91	96.9%
Jun-17	2,783	\$2,082,487	\$1,790,162	\$635,565	\$184,151	\$0	\$2,609,878	-\$527,391	\$871.62	125.3%
Jul-17	2,812	\$2,101,329	\$1,002,601	\$566,607	\$186,070	\$0	\$1,755,278	\$346,051	\$558.04	83.5%
Aug-17	2,814	\$2,105,719	\$1,432,300	\$702,997	\$186,202	\$0	\$2,321,499	-\$215,780	\$758.81	110.2%
Sep-17	2,829	\$2,111,374	\$953,510	\$718,810	\$187,195	\$0	\$1,859,515	\$251,859	\$591.13	88.1%
Oct-17	2,824	\$2,109,268	\$1,558,844	\$666,488	\$186,864	\$0	\$2,412,196	-\$302,928	\$788.01	114.4%
Nov-17	2,837	\$2,117,916	\$1,366,694	\$572,930	\$187,724	\$0	\$2,127,348	-\$9,432	\$683.69	100.4%
Dec-17	2,854	\$2,127,396	\$1,154,716	\$690,647	\$188,849	\$0	\$2,034,212	\$93,184	\$646.59	95.6%
Jan-18	2,868	\$2,207,849	\$1,301,870	\$606,579	\$227,490	\$0	\$2,135,939	\$71,910	\$665.43	96.7%
Feb-18	2866	\$2,207,463	\$817,799	\$626,710	\$227,331	\$0	\$1,671,840	\$535,623	\$504.02	75.7%
Mar-18	2869	\$2,208,192	\$1,146,243	\$645,723	\$227,569	\$0	\$2,019,535	\$188,657	\$624.60	91.5%
Apr-18	2878	\$2,211,369	\$1,009,661	\$635,692	\$228,283	\$0	\$1,873,636	\$337,733	\$571.70	84.7%
May-18	2913	\$2,229,533	\$1,079,344	\$656,429	\$231,059	\$0	\$1,966,832	\$262,701	\$595.87	88.2%
Jun-18	2913	\$2,226,922	\$990,129	\$646,900	\$231,059	\$0	\$1,868,088	\$358,834	\$561.97	83.9%
Jul-18	2902	\$2,218,191	\$1,155,655	\$672,061	\$230,187	\$0	\$2,057,903	\$160,288	\$629.81	92.8%
Aug-18	2916	\$2,228,711	\$1,112,829	\$692,510	\$231,297	\$0	\$2,036,636	\$192,075	\$619.11	91.4%
2015	2,418	\$18,669,716	\$11,692,885	\$5,270,004	\$2,040,045	\$0	\$19,002,934	-\$333,218	\$584.62	101.8%
2016	2,481	\$19,812,211	\$12,016,280	\$5,664,640	\$1,921,524	\$0	\$19,602,444	\$209,767	\$593.96	98.9%
2017	2,805	\$25,183,018	\$14,606,277	\$7,310,416	\$2,227,547	\$0	\$24,144,240	\$1,038,777	\$651.04	95.9%
2018 YTD	2,891	\$17,738,230	\$8,613,530	\$5,182,605	\$1,834,275	\$0	\$15,630,410	\$2,107,821	\$596.59	88.1%
Current 12 Months	2,872	\$26,204,184	\$13,647,294	\$7,831,480	\$2,584,907	\$0	\$24,063,681	\$2,140,503	\$623.13	91.8%

Data Sources: Enrollment & Premium: Hourglass; Medical Claims & Capitation: Anthem CLR, Anthem MDP; Rx Claims: Envolve, EmpiRx, Anthem MDP; Fixed Cost Schedule: Appendix

- Notes:
1. Fixed Cost Schedule: Appendix
 2. Pooling Points: HMO = \$400,000 and EPO/PPO/HDHP = \$450,000.
 3. EmpiRx PBM replaced Envolve PBM effective 1/1/2018

**San Joaquin Valley Insurance Authority (SJVIA)
Anthem Blue Cross Premium and Claims Report as of August 2018
County of Tulare - PPO**





**San Joaquin Valley Insurance Authority (SJVIA)
Anthem Blue Cross Premium and Claims Report as of August 2018
County of Tulare - HDHP**

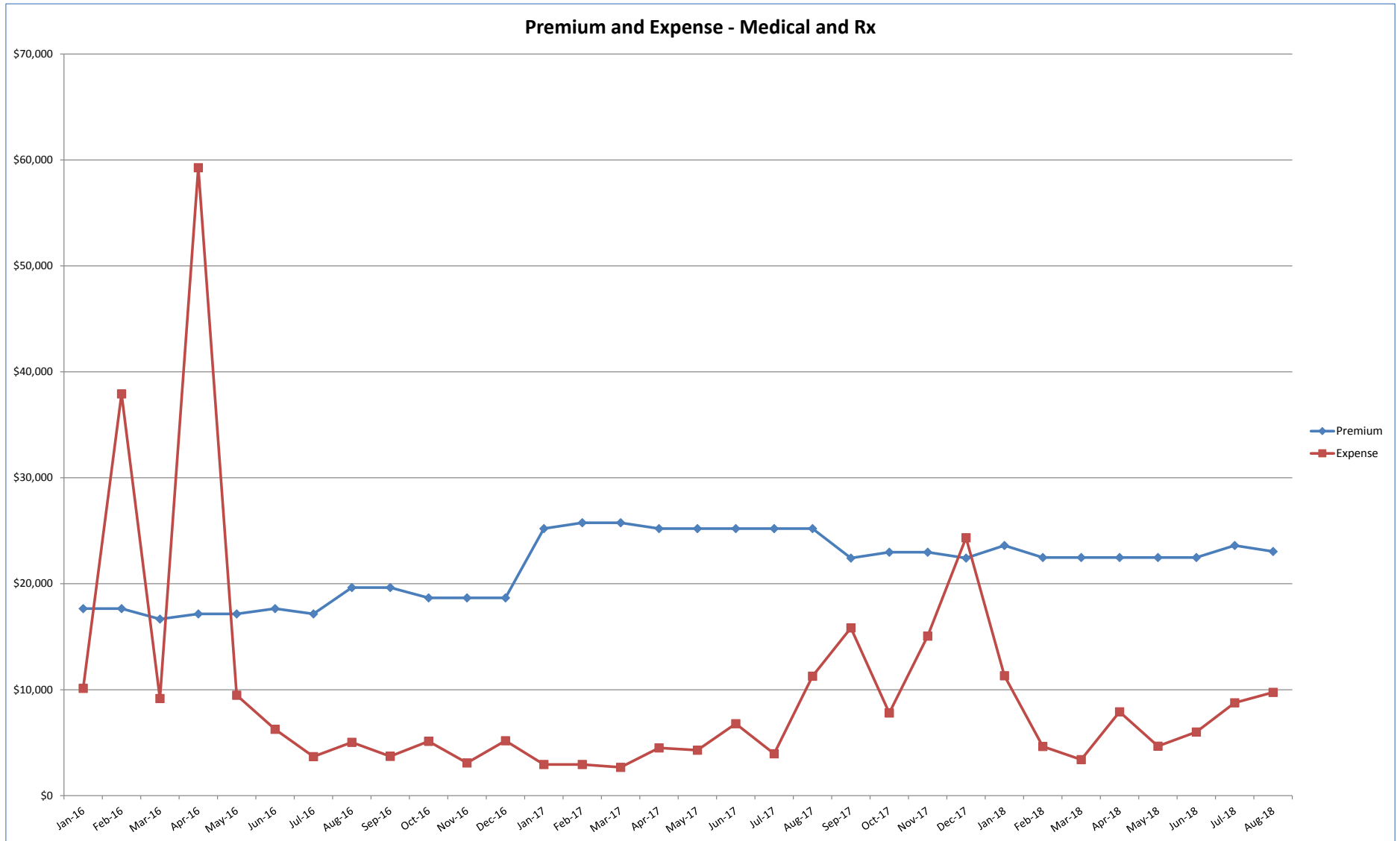
MONTH-YEAR	ENROLLED	FUNDING / PREMIUM	CLAIMS EXPENSE					SURPLUS / (DEFICIT)	AVERAGE CLAIM COST PEPM	TOTAL EXPENSE LOSS RATIO
			MEDICAL	RX	FIXED	POOLED CLAIMS	TOTAL EXPENSE			
Jan-16	32	\$17,653	\$7,356	\$710	\$2,066	\$0	\$10,132	\$7,521	\$252.06	57.4%
Feb-16	32	\$17,653	\$35,852	\$0	\$2,066	\$0	\$37,918	-\$20,265	\$1,120.38	214.8%
Mar-16	30	\$16,667	\$7,233	\$0	\$1,937	\$0	\$9,170	\$7,498	\$241.10	55.0%
Apr-16	31	\$17,160	\$56,854	\$413	\$2,001	\$0	\$59,268	-\$42,108	\$1,847.32	345.4%
May-16	31	\$17,160	\$7,095	\$390	\$2,001	\$0	\$9,486	\$7,674	\$241.45	55.3%
Jun-16	32	\$17,653	\$3,392	\$807	\$2,066	\$0	\$6,265	\$11,388	\$131.22	35.5%
Jul-16	31	\$17,160	\$988	\$696	\$2,001	\$0	\$3,685	\$13,475	\$54.32	21.5%
Aug-16	34	\$19,646	\$2,334	\$501	\$2,195	\$0	\$5,030	\$14,617	\$83.38	25.6%
Sep-16	34	\$19,646	\$813	\$701	\$2,195	\$0	\$3,709	\$15,938	\$44.53	18.9%
Oct-16	33	\$18,662	\$2,379	\$614	\$2,130	\$0	\$5,123	\$13,539	\$90.70	27.5%
Nov-16	33	\$18,662	\$301	\$663	\$2,130	\$0	\$3,094	\$15,568	\$29.21	16.6%
Dec-16	33	\$18,662	\$2,277	\$774	\$2,130	\$0	\$5,181	\$13,481	\$92.45	27.8%
Jan-17	38	\$25,205	\$371	\$49	\$2,514	\$0	\$2,934	\$22,270	\$11.05	11.6%
Feb-17	39	\$25,755	\$358	\$5	\$2,581	\$0	\$2,944	\$22,812	\$9.31	11.4%
Mar-17	39	\$25,755	\$70	\$25	\$2,581	\$0	\$2,676	\$23,080	\$2.44	10.4%
Apr-17	38	\$25,205	\$1,358	\$632	\$2,514	\$0	\$4,504	\$20,700	\$52.37	17.9%
May-17	38	\$25,205	\$1,730	\$47	\$2,514	\$0	\$4,291	\$20,913	\$46.76	17.0%
Jun-17	38	\$25,205	\$4,181	\$92	\$2,514	\$0	\$6,787	\$18,417	\$112.45	26.9%
Jul-17	38	\$25,205	\$1,410	\$23	\$2,514	\$0	\$3,947	\$21,257	\$37.71	15.7%
Aug-17	38	\$25,205	\$8,400	\$357	\$2,514	\$0	\$11,271	\$13,933	\$230.45	44.7%
Sep-17	36	\$22,426	\$13,425	\$28	\$2,382	\$0	\$15,835	\$6,590	\$373.69	70.6%
Oct-17	36	\$22,976	\$5,044	\$377	\$2,382	\$0	\$7,803	\$15,172	\$150.58	34.0%
Nov-17	36	\$22,976	\$12,105	\$576	\$2,382	\$0	\$15,063	\$7,912	\$352.25	65.6%
Dec-17	35	\$22,425	\$21,474	\$556	\$2,316	\$0	\$24,346	-\$1,921	\$629.43	108.6%
Jan-18	37	\$23,613	\$8,324	\$57	\$2,935	\$0	\$11,316	\$12,297	\$226.51	47.9%
Feb-18	35	\$22,475	\$1,869	\$0	\$2,776	\$0	\$4,645	\$17,830	\$53.40	20.7%
Mar-18	35	\$22,475	\$629	\$0	\$2,776	\$0	\$3,405	\$19,070	\$17.97	15.2%
Apr-18	35	\$22,475	\$5,130	\$0	\$2,776	\$0	\$7,906	\$14,569	\$146.57	35.2%
May-18	35	\$22,475	\$1,781	\$118	\$2,776	\$0	\$4,675	\$17,800	\$54.26	20.8%
Jun-18	35	\$22,475	\$2,063	\$1,164	\$2,776	\$0	\$6,003	\$16,472	\$92.20	26.7%
Jul-18	36	\$23,612	\$5,113	\$790	\$2,856	\$0	\$8,759	\$14,853	\$163.97	37.1%
Aug-18	35	\$23,043	\$5,786	\$1,185	\$2,776	\$0	\$9,747	\$13,296	\$199.17	42.3%
2015	32	\$215,364	\$174,555	\$8,710	\$26,718	\$0	\$209,983	\$5,381	\$482.28	97.5%
2016	32	\$216,382	\$126,874	\$6,269	\$24,916	\$0	\$158,059	\$58,323	\$344.93	73.0%
2017	37	\$293,539	\$69,926	\$2,767	\$29,710	\$0	\$102,403	\$191,136	\$161.90	34.9%
2018 YTD	35	\$182,641	\$30,695	\$3,314	\$22,448	\$0	\$56,457	\$126,184	\$120.17	30.9%
Current 12 Months	36	\$273,442	\$82,743	\$4,851	\$31,910	\$0	\$119,504	\$153,938	\$205.62	43.7%

Data Sources: Enrollment & Premium: Hourglass; Medical Claims & Capitation: Anthem CLR, Anthem MDP; Rx Claims: Envolve, EmpiRx, Anthem MDP; Fixed Cost Schedule: Appendix

Notes:

1. Fixed Cost Schedule: Appendix
2. Pooling Points: HMO = \$400,000 and EPO/PPO/HDHP = \$450,000.
3. EmpiRx PBM replaced Envolve PBM effective 1/1/2018

**San Joaquin Valley Insurance Authority (SJVIA)
Anthem Blue Cross Premium and Claims Report as of August 2018
County of Tulare - HDHP**





**San Joaquin Valley Insurance Authority (SJVIA)
Anthem Blue Cross Premium and Claims Report as of August 2018
All Others - All Medical**

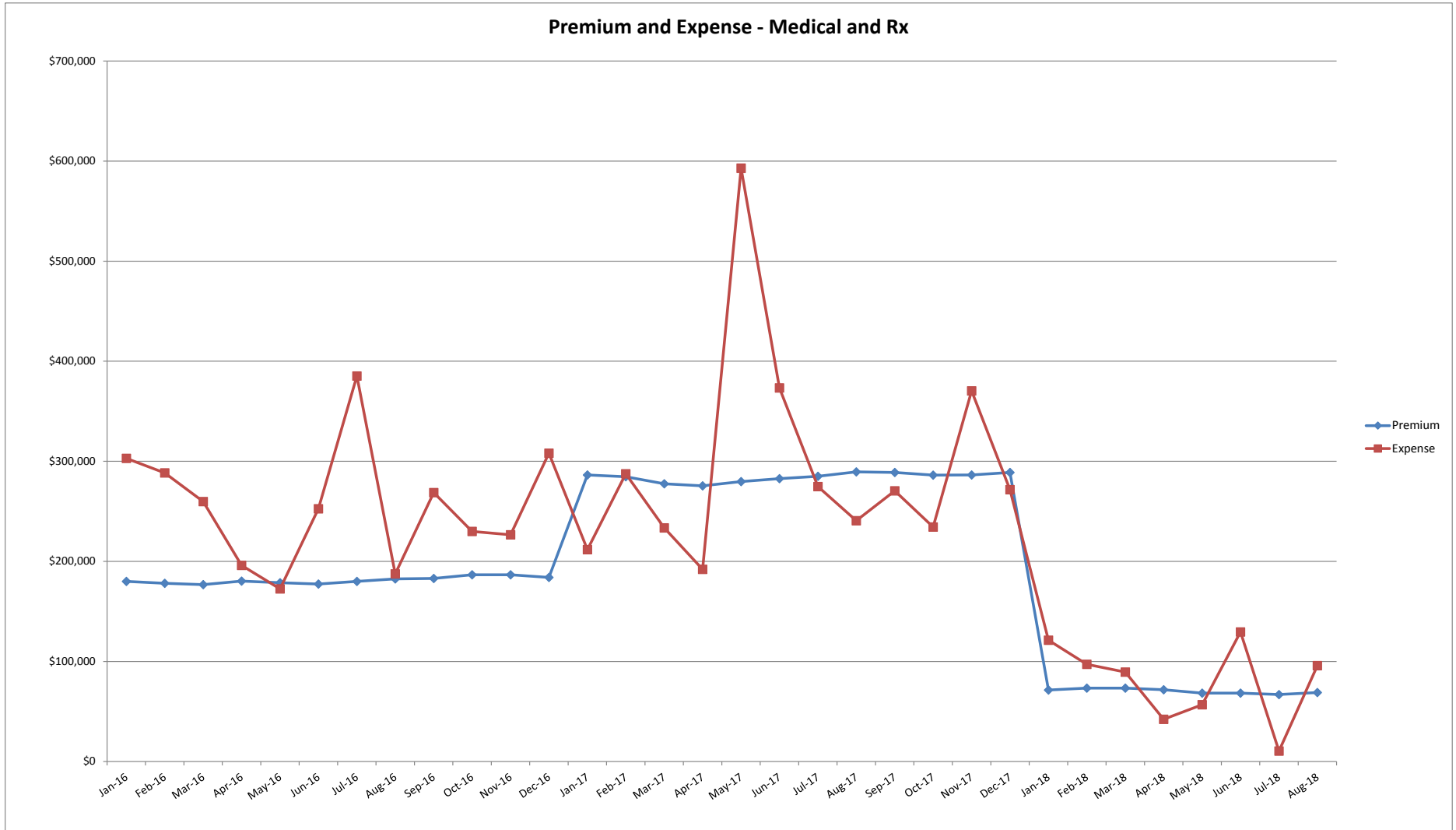
MONTH-YEAR	ENROLLED	FUNDING / PREMIUM	CLAIMS EXPENSE						SURPLUS / (DEFICIT)	AVERAGE CLAIM COST PEPM	TOTAL EXPENSE LOSS RATIO
			MEDICAL	CAPITATION	RX	FIXED	POOLED CLAIMS	TOTAL EXPENSE			
Jan-16	145	\$180,011	\$220,054	\$35,132	\$36,153	\$11,556	\$0	\$302,894	-\$122,883	\$2,009.23	168.3%
Feb-16	143	\$178,054	\$206,162	\$35,364	\$35,494	\$11,423	\$0	\$288,443	-\$110,390	\$1,937.21	162.0%
Mar-16	143	\$176,718	\$174,903	\$35,402	\$38,029	\$11,423	\$0	\$259,756	-\$83,038	\$1,736.60	147.0%
Apr-16	149	\$180,284	\$117,706	\$36,047	\$30,344	\$11,949	\$0	\$196,046	-\$15,763	\$1,235.55	108.7%
May-16	148	\$178,628	\$94,077	\$35,855	\$30,754	\$11,862	\$0	\$172,548	\$6,080	\$1,085.72	96.6%
Jun-16	148	\$177,377	\$171,526	\$36,680	\$32,529	\$11,883	\$0	\$252,617	-\$75,240	\$1,626.59	142.4%
Jul-16	150	\$180,061	\$303,039	\$36,470	\$33,753	\$12,016	\$0	\$385,278	-\$205,217	\$2,488.41	214.0%
Aug-16	151	\$182,553	\$110,676	\$36,688	\$28,093	\$12,082	\$0	\$187,539	-\$4,987	\$1,161.97	102.7%
Sep-16	151	\$182,973	\$185,744	\$36,618	\$34,329	\$12,061	\$0	\$268,752	-\$85,779	\$1,699.94	146.9%
Oct-16	153	\$186,621	\$149,400	\$36,954	\$31,430	\$12,215	\$0	\$229,999	-\$43,378	\$1,423.42	123.2%
Nov-16	153	\$186,621	\$149,042	\$37,283	\$28,006	\$12,215	\$0	\$226,546	-\$39,926	\$1,400.86	121.4%
Dec-16	151	\$183,961	\$250,282	\$36,371	\$28,776	\$12,061	-\$19,394	\$308,097	-\$124,135	\$1,960.50	167.5%
Jan-17	183	\$286,401	\$115,526	\$52,154	\$28,813	\$15,206	\$0	\$211,699	\$74,701	\$1,073.73	73.9%
Feb-17	182	\$284,629	\$185,571	\$51,965	\$34,881	\$15,117	\$0	\$287,534	-\$2,905	\$1,496.80	101.0%
Mar-17	178	\$277,523	\$131,952	\$52,088	\$34,651	\$14,823	\$0	\$233,514	\$44,009	\$1,228.60	84.1%
Apr-17	175	\$275,490	\$93,321	\$50,866	\$33,243	\$14,555	\$0	\$191,985	\$83,505	\$1,013.89	69.7%
May-17	178	\$279,753	\$485,586	\$51,944	\$40,593	\$14,802	\$0	\$592,925	-\$313,172	\$3,247.88	211.9%
Jun-17	181	\$282,736	\$272,269	\$52,026	\$34,035	\$15,049	\$0	\$373,378	-\$90,642	\$1,979.72	132.1%
Jul-17	182	\$285,099	\$170,028	\$52,051	\$37,524	\$15,096	\$0	\$274,698	\$10,401	\$1,426.39	96.4%
Aug-17	184	\$289,453	\$133,904	\$52,825	\$38,615	\$15,274	\$0	\$240,619	\$48,835	\$1,224.70	83.1%
Sep-17	184	\$288,851	\$162,496	\$52,763	\$40,000	\$15,253	\$0	\$270,512	\$18,339	\$1,387.28	93.7%
Oct-17	184	\$286,225	\$129,356	\$52,396	\$37,398	\$15,274	\$0	\$234,424	\$51,801	\$1,191.03	81.9%
Nov-17	185	\$286,335	\$263,222	\$52,701	\$39,078	\$15,364	\$0	\$370,365	-\$84,030	\$1,918.92	129.3%
Dec-17	185	\$288,923	\$162,065	\$53,304	\$40,948	\$15,385	\$0	\$271,702	\$17,221	\$1,385.50	94.0%
Jan-18	38	\$71,512	\$113,536	\$0	\$5,036	\$2,622	\$0	\$121,194	-\$49,683	\$3,120.32	169.5%
Feb-18	40	\$73,337	\$86,671	\$0	\$7,680	\$2,760	\$0	\$97,111	-\$23,774	\$2,358.76	132.4%
Mar-18	40	\$73,337	\$77,603	\$0	\$9,021	\$2,760	\$0	\$89,384	-\$16,047	\$2,165.59	121.9%
Apr-18	39	\$71,690	\$33,297	\$0	\$6,186	\$2,691	\$0	\$42,175	\$29,516	\$1,012.39	58.8%
May-18	37	\$68,404	\$47,159	\$0	\$7,047	\$2,553	\$0	\$56,759	\$11,645	\$1,465.03	83.0%
Jun-18	37	\$68,412	\$118,930	\$0	\$7,983	\$2,553	\$0	\$129,467	-\$61,054	\$3,430.09	189.2%
Jul-18	37	\$66,952	\$1,487	\$0	\$6,422	\$2,553	\$0	\$10,463	\$56,489	\$213.76	15.6%
Aug-18	38	\$68,960	\$56,140	\$0	\$37,091	\$2,622	\$0	\$95,854	-\$26,894	\$2,453.46	139.0%
2015	123	\$1,660,403	\$2,594,309	\$428,402	\$355,693	\$129,738	-\$50,695	\$3,457,448	-\$1,797,044	\$2,251.49	208.2%
2016	149	\$2,173,860	\$2,132,611	\$434,864	\$387,689	\$142,746	-\$19,394	\$3,078,516	-\$904,656	\$1,644.69	141.6%
2017	182	\$3,411,417	\$2,305,296	\$627,083	\$439,781	\$181,196	\$0	\$3,553,356	-\$141,938	\$1,546.15	104.2%
2018 YTD	38	\$562,604	\$534,823	\$0	\$86,466	\$21,117	\$0	\$642,406	-\$79,802	\$2,030.36	114.2%
Current 12 Months	87	\$1,712,938	\$1,251,962	\$211,164	\$243,891	\$82,393	\$0	\$1,789,409	-\$76,472	\$1,635.07	104.5%

Data Sources: Enrollment & Premium: Hourglass; Medical Claims & Capitation: Anthem CLR, Anthem MDP; Rx Claims: Envolve, EmpiRx, Anthem MDP; Fixed Cost Schedule: Appendix

Notes:

1. Fixed Cost Schedule: Appendix
2. Pooling Points: HMO = \$400,000 and EPO/PPO/HDHP = \$450,000.
3. EmpiRx PBM replaced Envolve PBM effective 1/1/2018
4. Waterford and Ceres terminated from SJVIA effective 1/1/2018
5. All Others Claims include runout for Ceres and Waterford

**San Joaquin Valley Insurance Authority (SJVIA)
Anthem Blue Cross Premium and Claims Report as of August 2018
All Others - All Medical**





**San Joaquin Valley Insurance Authority (SJVIA)
Anthem Blue Cross Premium and Claims Report as of August 2018
All Others - HMO**

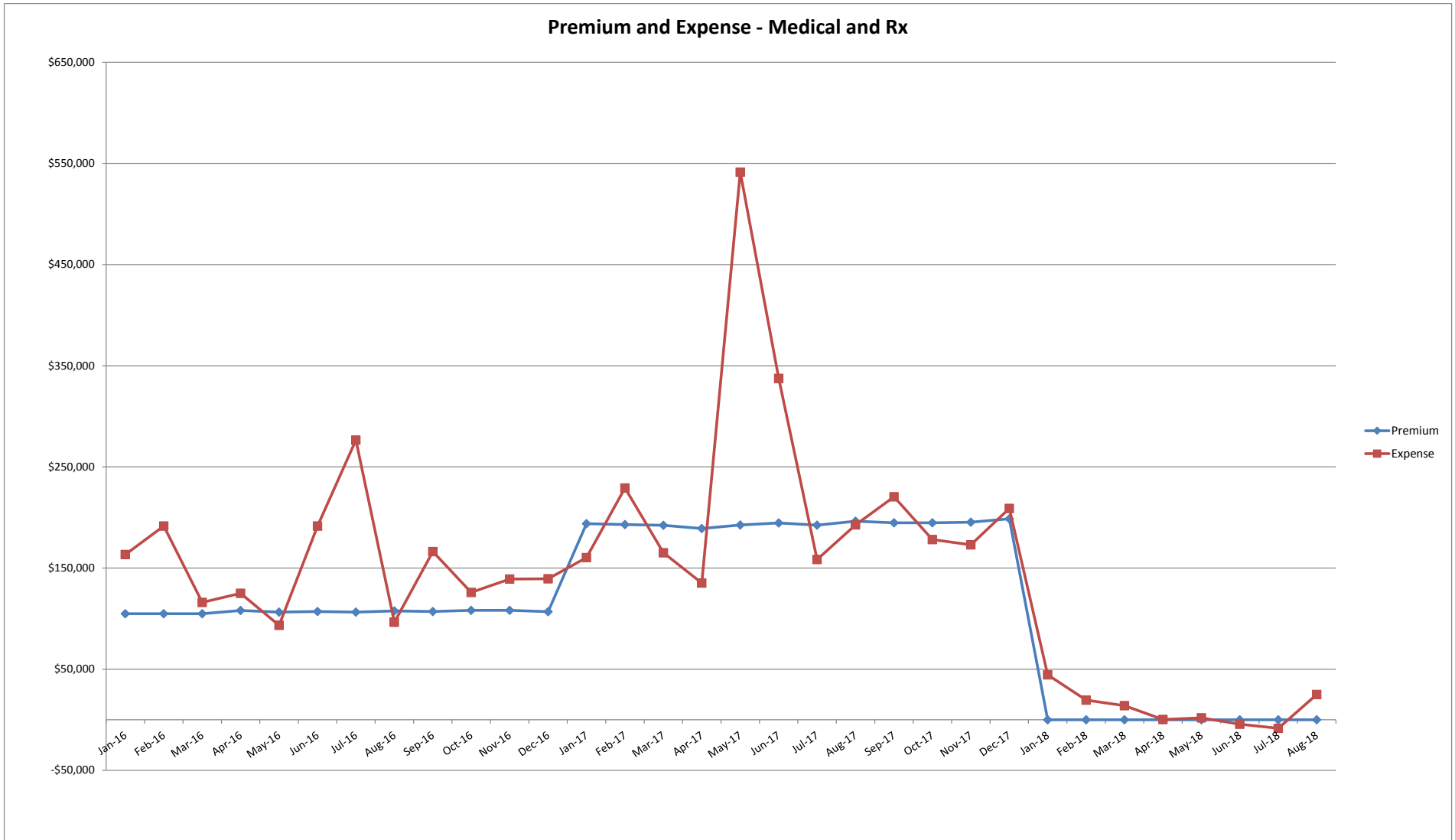
MONTH-YEAR	ENROLLED	FUNDING / PREMIUM	CLAIMS EXPENSE						SURPLUS / (DEFICIT)	AVERAGE CLAIM COST PEPM	TOTAL EXPENSE LOSS RATIO
			MEDICAL	CAPITATION	RX	FIXED	POOLED CLAIMS	TOTAL EXPENSE			
Jan-16	90	\$104,892	\$104,247	\$35,132	\$16,023	\$7,896	\$0	\$163,297	-\$58,405	\$1,726.68	155.7%
Feb-16	90	\$104,782	\$104,859	\$35,364	\$17,437	\$7,896	\$0	\$191,556	-\$86,774	\$2,040.67	182.8%
Mar-16	90	\$104,782	\$54,893	\$35,402	\$17,830	\$7,896	\$0	\$116,021	-\$11,239	\$1,201.39	110.7%
Apr-16	96	\$108,072	\$61,425	\$36,047	\$19,146	\$8,422	\$0	\$125,041	-\$16,969	\$1,214.78	115.7%
May-16	95	\$106,416	\$31,901	\$35,855	\$17,273	\$8,334	\$0	\$93,364	\$13,052	\$895.05	87.7%
Jun-16	96	\$106,964	\$125,570	\$36,680	\$20,923	\$8,422	\$0	\$191,595	-\$84,631	\$1,908.05	179.1%
Jul-16	96	\$106,465	\$211,706	\$36,470	\$19,944	\$8,422	\$0	\$276,542	-\$170,077	\$2,792.91	259.7%
Aug-16	96	\$107,573	\$37,071	\$36,688	\$14,226	\$8,422	\$0	\$96,407	\$11,166	\$916.51	89.6%
Sep-16	95	\$107,024	\$100,010	\$36,618	\$21,314	\$8,334	\$0	\$166,276	-\$59,252	\$1,662.55	155.4%
Oct-16	96	\$108,181	\$60,812	\$36,954	\$19,723	\$8,422	\$0	\$125,911	-\$17,730	\$1,223.85	116.4%
Nov-16	96	\$108,181	\$76,371	\$37,283	\$17,090	\$8,422	\$0	\$139,166	-\$30,985	\$1,361.92	128.6%
Dec-16	95	\$106,906	\$77,851	\$36,371	\$16,901	\$8,334	\$0	\$139,458	-\$32,552	\$1,380.24	130.4%
Jan-17	129	\$193,821	\$80,714	\$52,154	\$15,966	\$11,525	\$0	\$160,359	\$33,462	\$1,153.75	82.7%
Feb-17	128	\$192,923	\$140,017	\$51,965	\$25,740	\$11,436	\$0	\$229,157	-\$36,235	\$1,700.95	118.8%
Mar-17	127	\$192,288	\$77,874	\$52,088	\$23,850	\$11,346	\$0	\$165,158	\$27,130	\$1,211.12	85.9%
Apr-17	124	\$189,106	\$46,228	\$50,866	\$27,044	\$11,078	\$0	\$135,216	\$53,890	\$1,001.11	71.5%
May-17	126	\$192,496	\$455,444	\$51,944	\$22,748	\$11,257	\$0	\$541,393	-\$348,897	\$4,207.43	281.2%
Jun-17	128	\$194,605	\$251,759	\$52,026	\$22,230	\$11,436	\$0	\$337,451	-\$142,846	\$2,546.99	173.4%
Jul-17	127	\$192,426	\$71,385	\$52,051	\$23,604	\$11,346	\$0	\$158,386	\$34,040	\$1,157.79	82.3%
Aug-17	129	\$196,256	\$106,827	\$52,825	\$21,514	\$11,525	\$0	\$192,691	\$3,565	\$1,404.39	98.2%
Sep-17	128	\$194,780	\$130,241	\$52,763	\$26,042	\$11,436	\$0	\$220,481	-\$25,701	\$1,633.17	113.2%
Oct-17	129	\$194,711	\$91,277	\$52,396	\$23,000	\$11,525	\$0	\$178,198	\$16,512	\$1,292.04	91.5%
Nov-17	130	\$195,345	\$82,907	\$52,701	\$25,746	\$11,614	\$0	\$172,968	\$22,376	\$1,241.18	88.5%
Dec-17	131	\$198,678	\$116,605	\$53,304	\$27,326	\$11,704	\$0	\$208,939	-\$10,261	\$1,505.61	105.2%
Jan-18	0	\$0	\$44,390	\$0	\$0	\$0	\$0	\$44,390	-\$44,390	\$0.00	0.0%
Feb-18	0	\$0	\$19,476	\$0	\$0	\$0	\$0	\$19,476	-\$19,476	\$0.00	0.0%
Mar-18	0	\$0	\$13,943	\$0	\$0	\$0	\$0	\$13,943	-\$13,943	\$0.00	0.0%
Apr-18	0	\$0	\$224	\$0	\$0	\$0	\$0	\$224	-\$224	\$0.00	0.0%
May-18	0	\$0	\$1,885	\$0	\$0	\$0	\$0	\$1,885	-\$1,885	\$0.00	0.0%
Jun-18	0	\$0	-\$4,411	\$0	\$0	\$0	\$0	-\$4,411	\$4,411	\$0.00	0.0%
Jul-18	0	\$0	-\$8,439	\$0	\$0	\$0	\$0	-\$8,439	\$8,439	\$0.00	0.0%
Aug-18	0	\$0	\$24,961	\$0	\$0	\$0	\$0	\$24,961	-\$24,961	\$0.00	0.0%
2015	94	\$1,211,794	\$2,250,892	\$428,402	\$257,607	\$104,791	-\$50,695	\$2,990,998	-\$1,779,204	\$2,547.40	246.8%
2016	94	\$1,280,238	\$1,072,716	\$434,864	\$217,831	\$99,223	\$0	\$1,824,634	-\$544,396	\$1,525.56	142.5%
2017	128	\$2,327,432	\$1,651,278	\$627,083	\$284,809	\$137,226	\$0	\$2,700,397	-\$372,964	\$1,668.73	116.0%
2018 YTD	0	\$0	\$92,029	\$0	\$0	\$0	\$0	\$92,029	-\$92,029	#DIV/0!	#DIV/0!
Current 12 Months	43	\$783,513	\$513,059	\$211,164	\$102,114	\$46,278	\$0	\$872,615	-\$89,102	\$1,595.25	111.4%

Data Sources: Enrollment & Premium: Hourglass; Medical Claims & Capitation: Anthem CLR, Anthem MDP; Rx Claims: Envolve, EmpiRx, Anthem MDP; Fixed Cost Schedule: Appendix

- Notes:
1. Fixed Cost Schedule: Appendix
 2. Pooling Points: HMO = \$400,000 and EPO/PPO/HDHP = \$450,000.
 3. EmpiRx PBM replaced Envolve PBM effective 1/1/2018
 4. Waterford and Ceres terminated from SJVIA effective 1/1/2018
 5. All Others Claims include runout for Ceres and Waterford

**San Joaquin Valley Insurance Authority (SJVIA)
Anthem Blue Cross Premium and Claims Report as of August 2018
All Others - HMO**

Premium and Expense - Medical and Rx





**San Joaquin Valley Insurance Authority (SJVIA)
Anthem Blue Cross Premium and Claims Report as of August 2018
All Others - PPO**

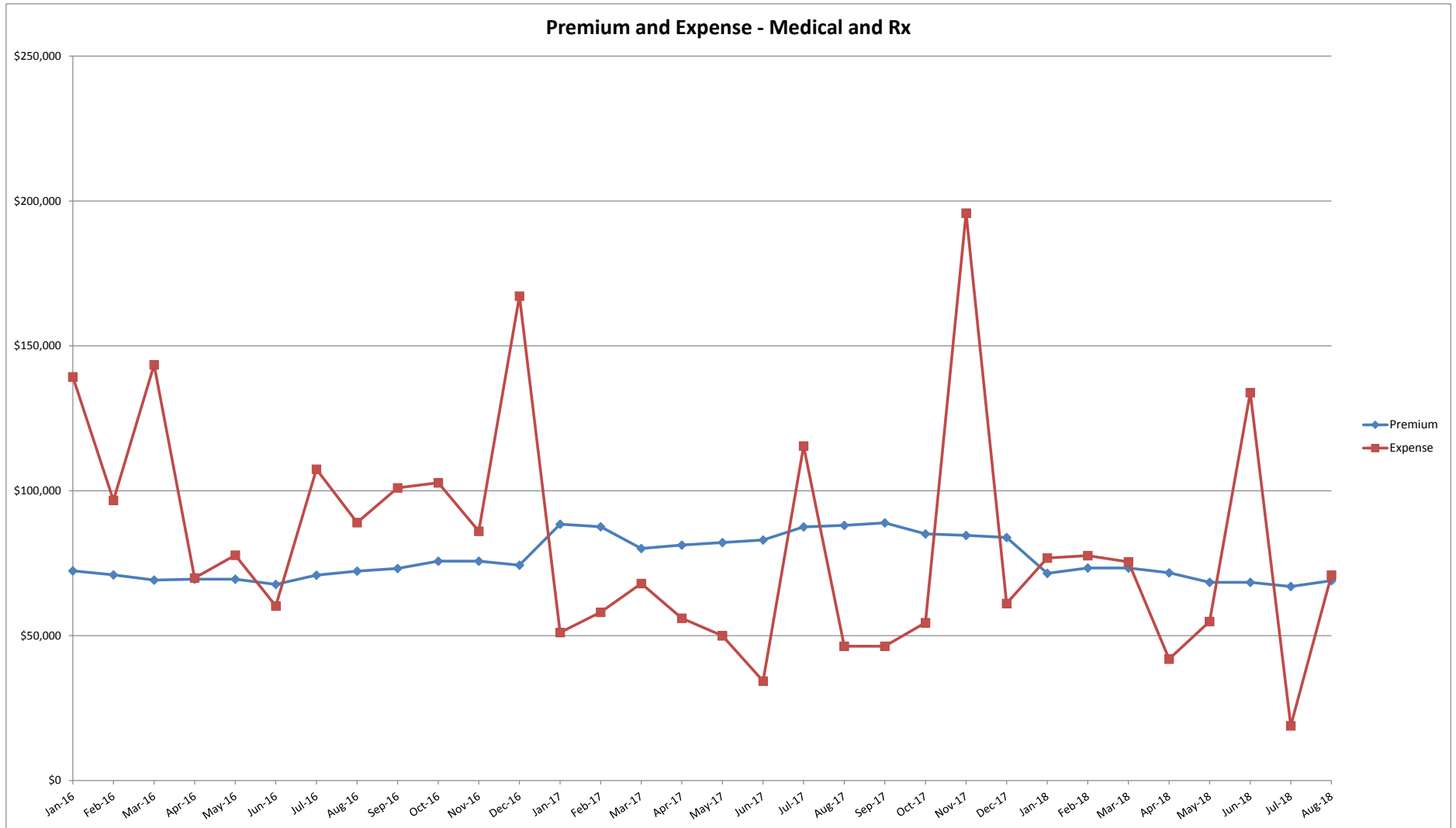
MONTH-YEAR	ENROLLED	FUNDING / PREMIUM	CLAIMS EXPENSE				SURPLUS / (DEFICIT)	AVERAGE CLAIM COST PEPM	TOTAL EXPENSE LOSS RATIO	
			MEDICAL	Rx	FIXED	POOLED CLAIMS				TOTAL EXPENSE
Jan-16	51	\$72,387	\$115,807	\$20,130	\$3,394	\$0	\$139,331	-\$66,944	\$2,665.43	192.5%
Feb-16	50	\$71,003	\$75,303	\$18,057	\$3,328	\$0	\$96,688	-\$25,684	\$1,867.20	136.2%
Mar-16	49	\$69,204	\$120,010	\$20,198	\$3,261	\$0	\$143,469	-\$74,265	\$2,861.39	207.3%
Apr-16	49	\$69,480	\$56,281	\$10,375	\$3,261	\$0	\$69,917	-\$436	\$1,360.32	100.6%
May-16	49	\$69,480	\$62,047	\$12,463	\$3,261	\$0	\$77,770	-\$8,290	\$1,520.60	111.9%
Jun-16	48	\$67,681	\$45,430	\$11,606	\$3,194	\$0	\$60,230	\$7,450	\$1,188.25	89.0%
Jul-16	50	\$70,864	\$91,333	\$12,791	\$3,328	\$0	\$107,452	-\$36,588	\$2,082.49	151.6%
Aug-16	51	\$72,248	\$72,830	\$12,817	\$3,394	\$0	\$89,041	-\$16,793	\$1,679.35	123.2%
Sep-16	52	\$73,216	\$85,608	\$11,965	\$3,461	\$0	\$101,034	-\$27,817	\$1,876.40	138.0%
Oct-16	53	\$75,708	\$88,588	\$10,657	\$3,527	\$0	\$102,772	-\$27,065	\$1,872.55	135.7%
Nov-16	53	\$75,708	\$72,671	\$9,867	\$3,527	\$0	\$86,065	-\$10,357	\$1,557.32	113.7%
Dec-16	52	\$74,324	\$172,305	\$10,830	\$3,461	-\$19,394	\$167,202	-\$92,878	\$3,148.87	225.0%
Jan-17	50	\$88,478	\$34,812	\$12,847	\$3,409	\$0	\$51,068	\$37,410	\$953.19	57.7%
Feb-17	50	\$87,604	\$45,554	\$9,141	\$3,409	\$0	\$58,104	\$29,500	\$1,093.91	66.3%
Mar-17	46	\$80,093	\$54,078	\$10,791	\$3,136	\$0	\$68,004	\$12,089	\$1,410.19	84.9%
Apr-17	46	\$81,243	\$47,093	\$5,778	\$3,136	\$0	\$56,006	\$25,237	\$1,149.36	68.9%
May-17	47	\$82,117	\$30,046	\$16,702	\$3,204	\$0	\$49,952	\$32,165	\$994.63	60.8%
Jun-17	48	\$82,990	\$20,385	\$10,659	\$3,272	\$0	\$34,316	\$48,674	\$646.74	41.3%
Jul-17	50	\$87,532	\$98,643	\$13,428	\$3,409	\$0	\$115,479	-\$27,947	\$2,241.42	131.9%
Aug-17	50	\$88,057	\$27,003	\$15,953	\$3,409	\$0	\$46,364	\$41,692	\$859.11	52.7%
Sep-17	51	\$88,930	\$30,088	\$12,809	\$3,477	\$0	\$46,374	\$42,556	\$841.13	52.1%
Oct-17	49	\$85,134	\$37,891	\$13,246	\$3,340	\$0	\$54,477	\$30,657	\$1,043.61	64.0%
Nov-17	49	\$84,610	\$180,315	\$12,147	\$3,340	\$0	\$195,802	-\$111,193	\$3,927.80	231.4%
Dec-17	48	\$83,865	\$45,364	\$12,459	\$3,272	\$0	\$61,095	\$22,770	\$1,204.65	72.8%
Jan-18	38	\$71,512	\$69,146	\$5,036	\$2,622	\$0	\$76,804	-\$5,293	\$1,952.16	107.4%
Feb-18	40	\$73,337	\$67,195	\$7,680	\$2,760	\$0	\$77,635	-\$4,298	\$1,871.86	105.9%
Mar-18	40	\$73,337	\$63,660	\$9,021	\$2,760	\$0	\$75,441	-\$2,104	\$1,817.01	102.9%
Apr-18	39	\$71,690	\$33,073	\$6,186	\$2,691	\$0	\$41,951	\$29,740	\$1,006.65	58.5%
May-18	37	\$68,404	\$45,274	\$7,047	\$2,553	\$0	\$54,874	\$13,530	\$1,414.08	80.2%
Jun-18	37	\$68,412	\$123,341	\$7,983	\$2,553	\$0	\$133,878	-\$65,465	\$3,549.30	195.7%
Jul-18	37	\$66,952	\$9,926	\$6,422	\$2,553	\$0	\$18,902	\$48,050	\$441.84	28.2%
Aug-18	38	\$68,960	\$31,179	\$37,091	\$2,622	\$0	\$70,893	-\$1,933	\$1,796.59	102.8%
2015	52	\$432,796	\$343,342	\$98,086	\$22,633	\$0	\$464,061	-\$31,265	\$1,410.31	107.2%
2016	51	\$861,303	\$1,058,213	\$161,756	\$40,396	-\$19,394	\$1,240,971	-\$379,668	\$1,977.88	144.1%
2017	49	\$1,020,653	\$651,272	\$145,959	\$39,811	\$0	\$837,042	\$183,611	\$1,365.12	82.0%
2018 YTD	38	\$562,604	\$442,794	\$86,466	\$21,117	\$0	\$550,377	\$12,227	\$1,729.61	97.8%
Current 12 Months	42	\$905,143	\$736,452	\$137,128	\$34,547	\$0	\$908,126	-\$2,983	\$1,736.74	100.3%

Data Sources: Enrollment & Premium: Hourglass; Medical Claims & Capitation: Anthem CLR, Anthem MDP; Rx Claims: Envolve, EmpiRx, Anthem MDP; Fixed Cost Schedule: Appendix

Notes:

1. Fixed Cost Schedule: Appendix
2. Pooling Points: HMO = \$400,000 and EPO/PPO/HDHP = \$450,000.
3. EmpiRx PBM replaced Envolve PBM effective 1/1/2018
4. Waterford and Ceres terminated from SJVIA effective 1/1/2018
5. All Others Claims include runoff for Ceres and Waterford

**San Joaquin Valley Insurance Authority (SJVIA)
Anthem Blue Cross Premium and Claims Report as of August 2018
All Others - PPO**





**San Joaquin Valley Insurance Authority (SJVIA)
Anthem Blue Cross Premium and Claims Report as of August 2018
All Others - HDHP**

MONTH-YEAR	ENROLLED	FUNDING / PREMIUM	CLAIMS EXPENSE					SURPLUS / (DEFICIT)	AVERAGE CLAIM COST PEPM	TOTAL EXPENSE LOSS RATIO
			MEDICAL	RX	FIXED	POOLED CLAIMS	TOTAL EXPENSE			
Jan-16	4	\$2,732	\$0	\$0	\$266	\$0	\$266	\$2,466	\$0.00	9.7%
Feb-16	3	\$2,268	\$0	\$0	\$200	\$0	\$200	\$2,069	\$0.00	8.8%
Mar-16	4	\$2,732	\$0	\$0	\$266	\$0	\$266	\$2,466	\$0.00	9.7%
Apr-16	4	\$2,732	\$0	\$823	\$266	\$0	\$1,089	\$1,643	\$205.75	39.9%
May-16	4	\$2,732	\$129	\$1,018	\$266	\$0	\$1,413	\$1,319	\$286.75	51.7%
Jun-16	4	\$2,732	\$526	\$0	\$266	\$0	\$792	\$1,940	\$131.50	29.0%
Jul-16	4	\$2,732	\$0	\$1,018	\$266	\$0	\$1,284	\$1,448	\$254.50	47.0%
Aug-16	4	\$2,732	\$775	\$1,050	\$266	\$0	\$2,091	\$641	\$456.25	76.5%
Sep-16	4	\$2,732	\$126	\$1,050	\$266	\$0	\$1,442	\$1,290	\$294.00	52.8%
Oct-16	4	\$2,732	\$0	\$1,049	\$266	\$0	\$1,315	\$1,417	\$262.25	48.1%
Nov-16	4	\$2,732	\$0	\$1,049	\$266	\$0	\$1,315	\$1,417	\$262.25	48.1%
Dec-16	4	\$2,732	\$126	\$1,045	\$266	\$0	\$1,437	\$1,295	\$292.75	52.6%
Jan-17	4	\$4,102	\$0	\$0	\$273	\$0	\$273	\$3,830	\$0.00	6.6%
Feb-17	4	\$4,102	\$0	\$0	\$273	\$0	\$273	\$3,830	\$0.00	6.6%
Mar-17	5	\$5,141	\$0	\$10	\$341	\$0	\$351	\$4,790	\$2.00	6.8%
Apr-17	5	\$5,141	\$0	\$422	\$341	\$0	\$763	\$4,378	\$84.40	14.8%
May-17	5	\$5,141	\$96	\$1,144	\$341	\$0	\$1,581	\$3,560	\$248.00	30.7%
Jun-17	5	\$5,141	\$125	\$1,146	\$341	\$0	\$1,612	\$3,529	\$254.20	31.4%
Jul-17	5	\$5,141	\$0	\$492	\$341	\$0	\$833	\$4,308	\$98.40	16.2%
Aug-17	5	\$5,141	\$74	\$1,149	\$341	\$0	\$1,564	\$3,577	\$244.60	30.4%
Sep-17	5	\$5,141	\$2,167	\$1,149	\$341	\$0	\$3,657	\$1,484	\$663.20	71.1%
Oct-17	6	\$6,380	\$188	\$1,152	\$409	\$0	\$1,749	\$4,631	\$223.33	27.4%
Nov-17	6	\$6,380	\$0	\$1,185	\$409	\$0	\$1,594	\$4,786	\$197.50	25.0%
Dec-17	6	\$6,380	\$96	\$1,163	\$409	\$0	\$1,668	\$4,712	\$209.83	26.1%
Jan-18	0	\$0	\$0	\$0	\$0	\$0	\$0	\$0	\$0.00	0.0%
Feb-18	0	\$0	\$0	\$0	\$0	\$0	\$0	\$0	\$0.00	0.0%
Mar-18	0	\$0	\$0	\$0	\$0	\$0	\$0	\$0	\$0.00	0.0%
Apr-18	0	\$0	\$0	\$0	\$0	\$0	\$0	\$0	\$0.00	0.0%
May-18	0	\$0	\$0	\$0	\$0	\$0	\$0	\$0	\$0.00	0.0%
Jun-18	0	\$0	\$0	\$0	\$0	\$0	\$0	\$0	\$0.00	0.0%
Jul-18	0	\$0	\$0	\$0	\$0	\$0	\$0	\$0	\$0.00	0.0%
Aug-18	0	\$0	\$0	\$0	\$0	\$0	\$0	\$0	\$0.00	0.0%
2015	3	\$15,814	\$75	\$0	\$2,314	\$0	\$2,389	\$13,425	\$2.34	15.1%
2016	4	\$32,320	\$1,682	\$8,102	\$3,128	\$0	\$12,912	\$19,409	\$208.17	39.9%
2017	5	\$63,332	\$2,746	\$9,012	\$4,158	\$0	\$15,916	\$47,416	\$192.75	25.1%
2018 YTD	0	\$0	\$0	\$0	\$0	\$0	\$0	\$0	\$0.00	0.0%
Current 12 Months	2	\$24,282	\$2,451	\$4,649	\$1,568	\$0	\$8,668	\$15,614	\$308.70	35.7%

Data Sources: Enrollment & Premium: Hourglass; Medical Claims & Capitation: Anthem CLR, Anthem MDP; Rx Claims: Envolve, EmpiRx, Anthem MDP; Fixed Cost Schedule: Appendix

Notes:

1. Fixed Cost Schedule: Appendix
2. Pooling Points: HMO = \$400,000 and EPO/PPO/HDHP = \$450,000.
3. EmpiRx PBM replaced Envolve PBM effective 1/1/2018
4. Waterford and Ceres terminated from SJVIA effective 1/1/2018
5. All Others Claims include runout for Ceres and Waterford

**San Joaquin Valley Insurance Authority (SJVIA)
Anthem Blue Cross Premium and Claims Report as of August 2018
All Others - HDHP**

