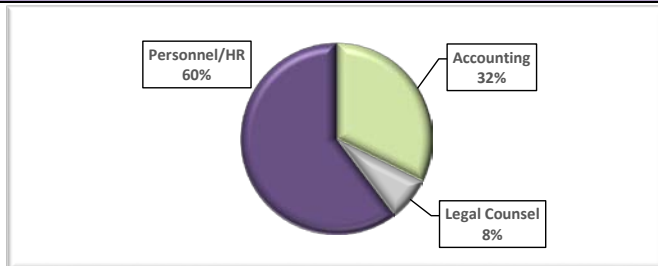


Administrative Cost Report

Invoice Dates July 1, 2015 through June 30, 2016

Payee	Description	Invoice Number	Invoice Date	Amount	Date Paid
ACTTC	Accounting Services, PPE 6/21, 7/5 & 7/19/15	916	8/17/2015	\$ 8,551.13	9/11/2015
ACTTC	Accounting Services, PPEs 8/2, 8/16 & 8/30/15	929	9/17/2015	\$ 12,342.46	4/1/2016
ACTTC	Accounting Services, PPEs 9/3 & 9/27/15	942	10/27/2015	\$ 9,852.28	4/1/2016
ACTTC	Accounting Services, PPEs 10/11 & 10/25/15	954	11/30/2015	\$ 15,576.53	4/15/2016
ACTTC	Accounting Services, PPEs 11/8 & 11/22/15	959	12/14/2015	\$ 10,911.52	4/15/2016
ACTTC	Accounting Services, PPEs 12/6 & 12/20/15	970	1/6/2016	\$ 10,794.14	4/15/2016
ACTTC	Accounting Services, PPEs 1/3, 1/17 & 1/31/16	989	2/25/2016	\$ 15,504.00	4/15/2016
ACTTC	Accounting Services, PPEs 2/14 & 2/28/16	999	3/28/2016	\$ 12,135.84	4/15/2016
ACTTC	Accounting Services, PPEs 3/13 & 3/27/16	1003	4/8/2016	\$ 11,555.45	4/15/2016
ACTTC	Accounting Services, PPEs 4/10 & 4/24/16	1022	5/23/2016	\$ 9,514.93	6/9/2016
Fresno County Counsel	Professional Services for 6/22-6/30/15, 7/6-7/19/15	24, 26	7/31/2015	\$ 546.97	8/4/2015
Fresno County Counsel	Professional Services for 7/20-8/16/15	1	8/25/2015	\$ 255.30	9/2/2015
Fresno County Counsel	Professional Services for 8/17-9/13/15	2	9/18/2015	\$ 778.47	1/20/2016
Fresno County Counsel	Professional Services for 9/14-10/11/15	3	10/22/2015	\$ 992.54	4/11/2016
Fresno County Counsel	Professional Services for 10/12-11/8/15	4	11/13/2015	\$ 4,936.99	4/11/2016
Fresno County Counsel	Professional Services for 11/9/15-12/6/15	5	12/14/2015	\$ 3,643.73	4/11/2016
Fresno County Counsel	Professional Services for 12/7/15-1/1/16	6	1/15/2016	\$ 1,525.00	4/11/2016
Fresno County Counsel	Professional Services for 1/4/16-1/31/16	7	2/12/2016	\$ 1,681.13	4/11/2016
Fresno County Counsel	Professional Services for PPEs 2/1/16-2/28/16	8	3/7/2016	\$ 1,817.34	4/11/2016
Fresno County Counsel	Professional Services for 2/29/16-3/27/16	9	4/7/2016	\$ 2,863.28	4/12/2016
Fresno County Counsel	Professional Services for 3/28/16-4/26/16	10	5/9/2016	\$ 1,329.80	5/18/2016
Fresno County Personnel	SJVIA Labor Billing PPEs 6/21/15 to 8/2/15	SJVIA-1601	8/13/2015	\$ 46,807.28	8/17/2015
Fresno County Personnel	SJVIA Labor Billing PPEs 8/16-9/13/15	SJVIA-1602	9/30/2015	\$ 18,212.75	2/16/2016
Fresno County Personnel	SJVIA Labor Billing PPEs 9/27-10/25/15	SJVIA-1603	11/3/2015	\$ 33,010.53	2/16/2016
Fresno County Personnel	SJVIA Labor Billing PPEs 11/8-12/6/15	SJVIA-1604	12/16/2015	\$ 21,403.93	2/16/2016
Fresno County Personnel	SJVIA Labor Billing PPEs 12/20/15-1/17/16	SJVIA-1605	1/26/2016	\$ 18,309.46	2/16/2016
Fresno County Personnel	SJVIA Labor Billing PPE 1/31/16	SJVIA-1606	2/9/2016	\$ 6,253.89	2/16/2016
Fresno County Personnel	SJVIA Labor Billing PPEs 2/14-3/13/16	SJVIA-1607	3/24/2016	\$ 23,181.02	4/5/2016
Fresno County Personnel	SJVIA Labor Billing PPEs 3/27/16-4/24/16	SJVIA-1608	5/3/2016	\$ 20,122.26	5/18/2016
Tulare County Counsel	Legal Services 4/13/15-6/25/15	SJVIA2015(e)	8/13/2015	\$ 834.10	8/17/2015
Tulare County Counsel	Legal Services 10/1/15-12/31/15	SJVIA-2016(b)	1/15/2016	\$ 2,691.80	4/11/2016
Tulare County Counsel	Legal Services 7/1/15-9/30/15	SJVIA2016(a)	11/13/2015	\$ 840.00	5/13/2016
Tulare County Counsel	Legal Services 1/1/16-3/31/16	SJVIA2016(c)	4/13/2016	\$ 2,007.80	5/13/2016
Tulare County Human Resources	SJVIA Billing 6/28/15-10/3/15	SJVIA007	10/5/2015	\$ 6,720.30	10/8/2015
Tulare County Human Resources	SJVIA Billing 10/4/15-12/26/15	SJVIA008	4/14/2016	\$ 11,389.81	4/22/2016
Tulare County Human Resources	SJVIA Billing 12/27/15-4/2/16	SJVIA009	4/19/2016	\$ 12,717.86	4/22/2016



Accounting	\$116,738.28
Legal Counsel	\$26,744.25
Personnel/HR	\$218,129.09
TOTAL:	\$ 361,611.62



Administrative Cost Report
Invoice Dates July 1, 2015 through June 30, 2016

<u>Payee</u>	<u>Description</u>	<u>Invoice Number</u>	<u>Invoice Date</u>	<u>Amount</u>	<u>Date Paid</u>
--------------	--------------------	-----------------------	---------------------	---------------	------------------