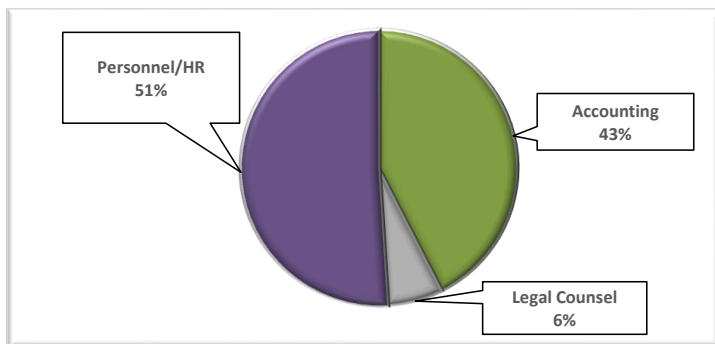




Administrative Cost Report

Invoice Dates June 1, 2014 through March 25, 2015

Payee	Description	Invoice Number	Invoice Date	Amount	Date Paid
ACTTC	Accounting Services for PPEs 5/11/14, 5/25/14 & 6/8/14	777	6/18/2014	\$ 11,592.23	7/18/2014
ACTTC	Accounting Services for PPEs 6/22/14, 7/6/14 & 7/20/14	794	8/11/2014	\$ 10,188.78	8/19/2014
ACTTC	Accounting Services for PPEs 8/3/14, 8/17/14 & 8/31/14	806	9/24/2014	\$ 11,006.71	9/29/2014
ACTTC	Accounting Services for PPEs 9/14/14 & 9/28/14	816	10/24/2014	\$ 8,755.47	11/25/2014
ACTTC	Accounting Services for PPEs 10/12/14 & 10/26/14	828	11/25/2014	\$ 7,037.98	12/15/2014
ACTTC	Accounting Services for PPEs 1/4/15 & 1/18/15	849	2/10/2015	\$ 6,379.37	2/17/2015
ACTTC	Accounting Services for PPEs 11/9/14, 11/23/14, 12/7/14, & 12/21/14	838	1/20/2015	\$ 13,550.07	2/17/2015
ACTTC	Accounting Services for PPEs 2/1/15 & 2/5/15	864	3/19/2015	\$ 7,824.81	
Fresno County Counsel	Professional Services from 6/9/14 - 6/22/14	0010	6/30/2014	\$ 169.50	7/18/2014
Fresno County Counsel	Professional Services from 6/23/14 - 7/20/14	0011	7/30/2014	\$ 339.00	8/5/2014
Fresno County Counsel	Professional Services from 7/21/14 - 8/17/14	0012	8/28/2014	\$ 858.80	9/4/2014
Fresno County Counsel	Professional Services from 8/18/14 - 9/14/14	0013	9/26/2014	\$ 531.10	10/1/2014
Fresno County Counsel	Professional Services from 9/15/14 - 10/12/14	0014	10/22/2014	\$ 226.00	10/28/2014
Fresno County Counsel	Professional Services from 10/13/14 - 11/9/14	0015	11/24/2014	\$ 3,740.30	12/10/2014
Fresno County Counsel	Professional Services from 11/10/14 - 12/7/14	0016	12/17/2014	\$ 666.70	1/9/2015
Fresno County Counsel	Professional Services from 1/5/15 - 2/1/15	0018	2/19/2015	\$ 350.30	2/23/2015
Fresno County Personnel	SJVIA Labor Billing PPEs 6/22-7/20/14 (includes SJVIA-1411)	SJVIA-1501 & SJVIA-1411	8/6/2014	\$ 15,620.86	8/28/2014
Fresno County Personnel	SJVIA Labor Billing PPEs 8/3-9/14/14	SJVIA-1502	9/23/2014	\$ 17,929.50	11/18/2014
Fresno County Personnel	SJVIA Labor Billing PPEs 9/28-11/9/14	1503	12/2/2014	\$ 13,687.14	12/16/2014
Fresno County Personnel	SJVIA Labor Billing PPEs 11/23-12/21	1504	12/30/2014	\$ 10,358.19	1/14/2015
Fresno County Personnel	SJVIA Labor Billing PPEs 1/4-2/15/15	SJVIA-1505	2/25/2015	\$ 14,735.92	2/27/2015
Fresno County Personnel	SJVIA Labor Billing PPEs 3/1-3/15/15	SJVIA-1506	3/25/2015	\$ 13,412.06	
Tulare County Counsel	Legal Services 1/1/14 - 6/30/14	SJVIA2014(a)	10/29/2014	\$ 3,202.80	11/17/2014
Tulare County Counsel	Legal Services 7/1/14 - 9/30/14	SJVIA2014(b)	10/29/2014	\$ 38.70	11/17/2014
Tulare County Counsel	Legal Services 10/1/14 - 12/31/14	SJVIA2014(c)	1/26/2015	\$ 1,482.80	1/30/2015
Tulare County Human Resources	SJVIA Services 7/1/14 - 12/31/14	SJVIA003	1/21/2015	\$ 5,837.04	1/30/2015



Accounting	\$76,335.42
Legal Counsel	\$11,606.00
Personnel/HR	\$91,580.71

TOTAL: \$ 179,522.13