

Financial and Utilization Dashboard (Paid Claims)

Membership Summary

Period	Med Subscribers	Med Members	Contract Size	Contract Size Commercial Benchmark	Member Trend
Current	5,438	11,933	2.2	2.0	5.4%
Prior	5,239	11,318	2.2	2.0	6.1%

Medical and Pharmacy Paid Amount Summary

	Current	Prior	Trend	Prior Trend
Medical				
Paid Amount	\$29,554,074	\$23,506,711		
Paid PMPM	\$206.38	\$173.07	19.2%	-2.4%
Paid PEPM	\$452.87	\$373.88	21.1%	-2.8%
Paid Amount In Network	\$28,374,387	\$22,626,520		
Discount Amount	\$73,588,207	\$62,101,409		
Payment Innovation				
Payment Innovation Paid Amount	\$7	\$33		
Payment Innovation PMPM	\$0.00	\$0.00	-78.7%	0.0%
Total Paid Amount with Payment Innovation	\$29,554,081	\$23,506,743		
Total PMPM with Payment Innovation	\$206.38	\$173.07	19.2%	-2.4%

* Results are not shown because the current period average pharmacy membership is 0, which is less than the threshold of 30

High Cost Claimants with Paid Amounts > \$50,000

High Cost Claimant (HCC) Summary	Current	Prior	Trend	Commercial Benchmark	Percent Paid In Network
Total Paid Amount	\$29,554,074	\$23,506,711			96.0%
Total HCC Paid Amount Med	\$12,521,992	\$8,349,276			97.5%
HCC Paid Amount as % of Total Paid Amount	42.4%	35.5%	19.3%	38.1%	
Number of HCC Members > \$50K	97	67			
HCC Members as Percent of Total Members	0.8%	0.6%	37.3%	1.1%	

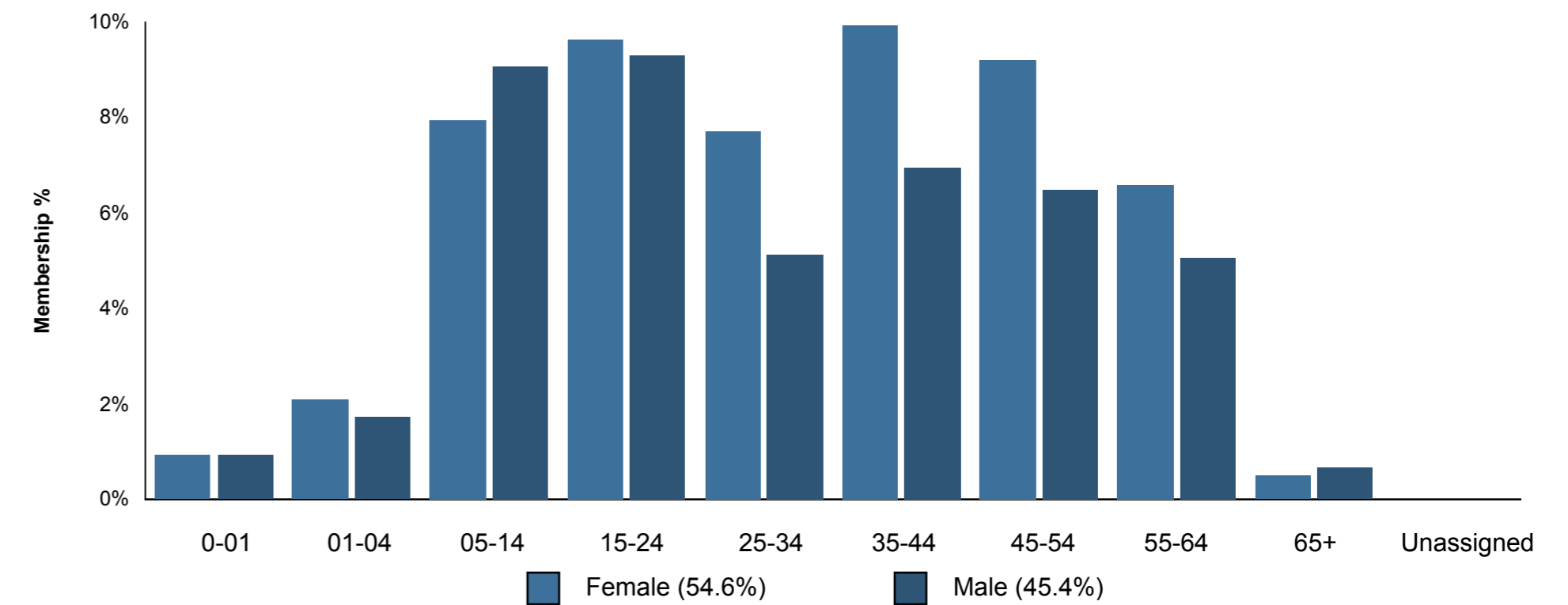
High Cost Claimant (HCC) Detail	Current	Prior	Trend	Commercial Benchmark
HCC PMPM	\$87.44	\$61.47	42.2%	\$110.51
HCC PEPM	\$191.88	\$132.80	44.5%	\$231.98
Non-HCC PMPM	\$118.94	\$111.60	6.6%	\$191.02
Non-HCC PEPM	\$260.99	\$241.08	8.3%	\$401.00

Note: High Cost Claimants are defined as those claimants with more than \$50,000 in paid amount during the reporting period.

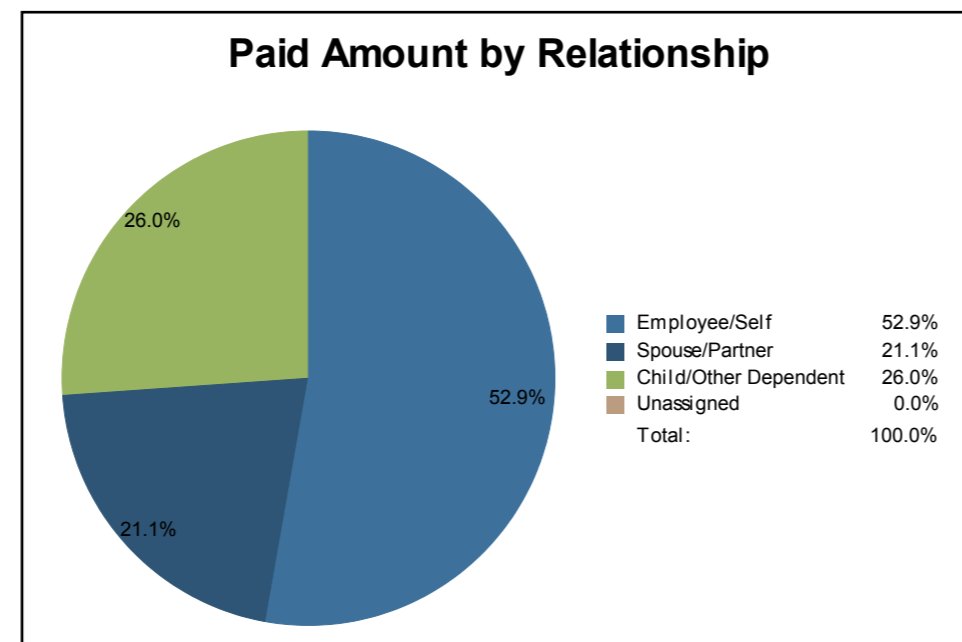
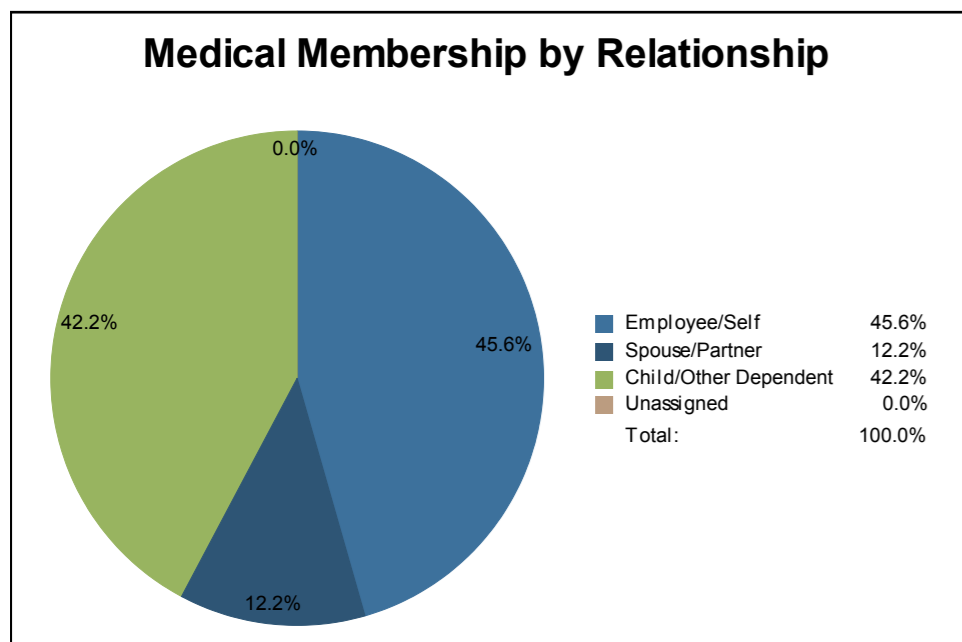
* Results are not shown because the current period average pharmacy membership is 0, which is less than the threshold of 30

Medical Membership Summary by Age Band and Gender

Average Age: Subscriber = 44, Member = 31



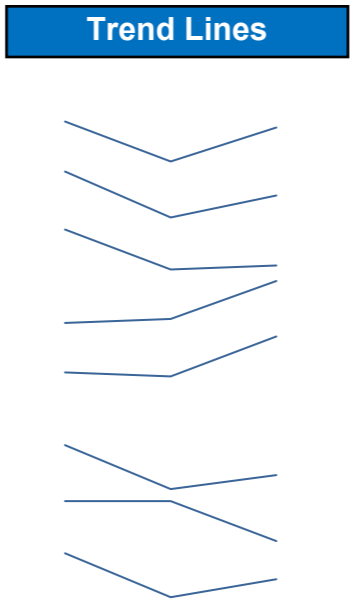
NOTE: Anthem Book of Business Average Age is 35



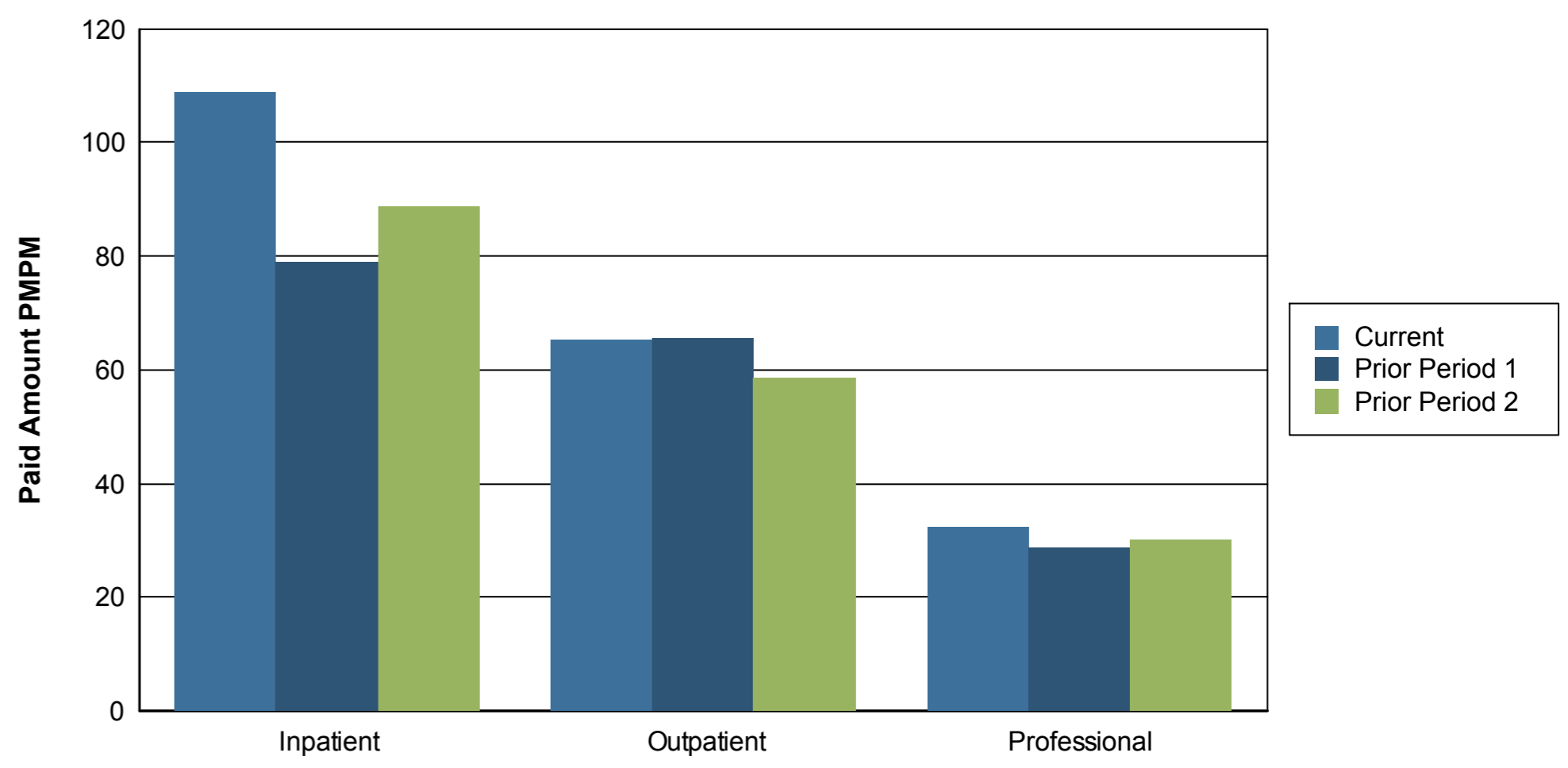
Financial and Utilization Dashboard (Paid Claims)

Utilization Breakdown

Metrics	Current Period	Prior Period 1	Prior Period 2
Utilization			
IP Facility Acute Admissions per 1000	62.8	51.4	61.1
IP Facility Acute Days per 1000	258.7	183.6	221.1
IP Facility Acute Avg LOS	4.12	3.57	3.62
OP Facility Visits per 1000	857.8	864.9	926.5
Professional Services per 1000	19,117.1	17,175.1	30,545.8
Paid Amount PMPM by Setting			
IP Facility Acute Admit	\$106.43	\$77.24	\$86.80
OP Facility Visits	\$65.24	\$65.40	\$58.59
Professional Service	\$32.31	\$28.75	\$30.15



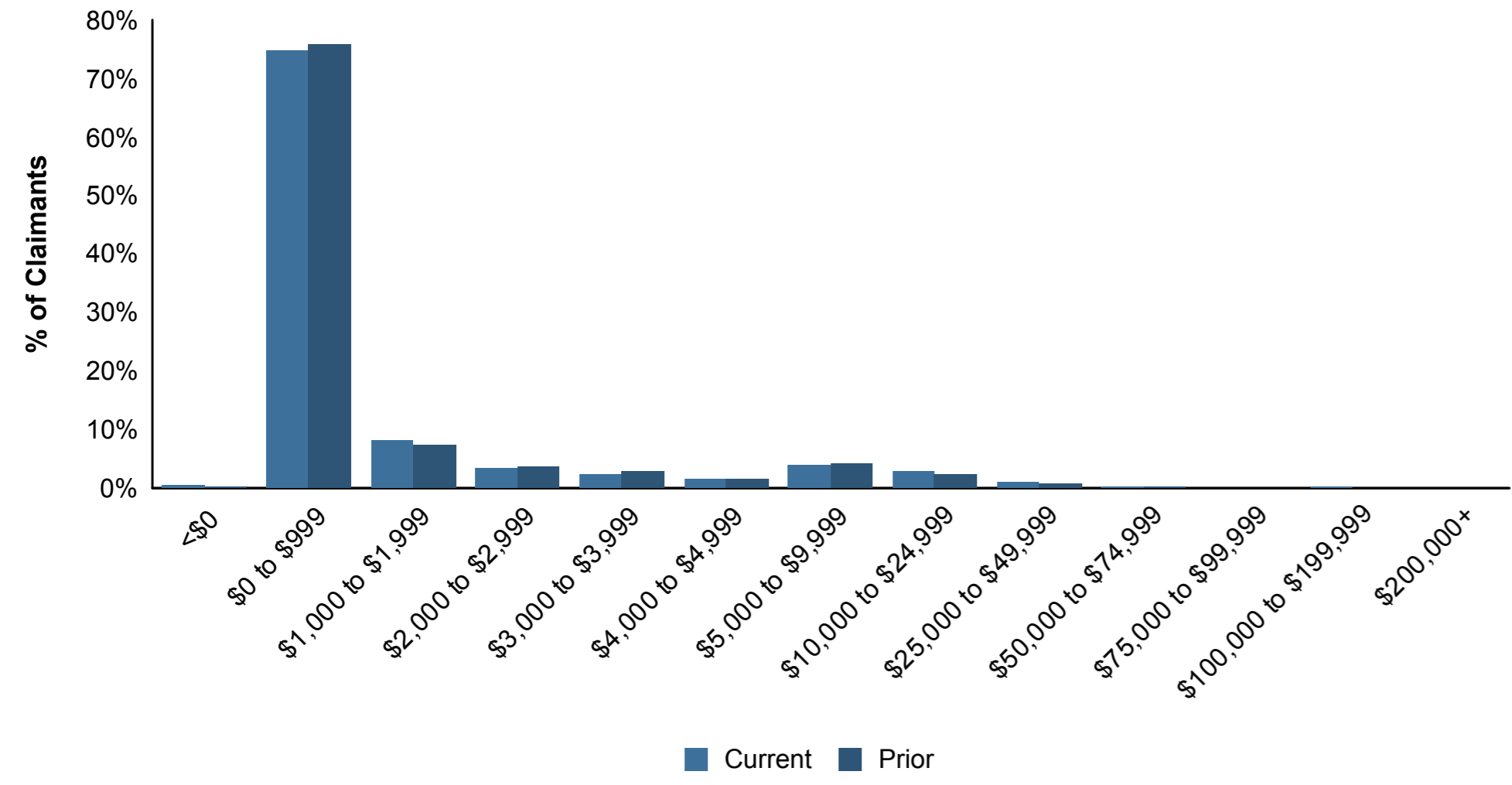
Paid Amount by Setting



* Results are not shown because the current period average pharmacy membership is 0, which is less than the threshold of 30

* Results are not shown because the current period average pharmacy membership is 0, which is less than the threshold of 30

Paid Claims Distribution



Note: Based on medical and pharmacy where applicable