

COUNTY OF FRESNO
ADDENDUM NUMBER: THREE (3)
RFQ NUMBER: 926-5231
PEST CONTROL

February 19, 2014

PURCHASING USE

ssi

G:\PUBLIC\RFQ\926-5231 ADD 3.DOC

IMPORTANT: SUBMIT QUOTATION IN SEALED PACKAGE WITH QUOTATION NUMBER, CLOSING DATE AND BUYER'S NAME MARKED CLEARLY ON THE OUTSIDE TO:

COUNTY OF FRESNO, Purchasing
4525 EAST HAMILTON AVENUE, 2ND FLOOR
FRESNO, CA 93702-4599

CLOSING DATE OF BID WILL BE AT 2:00 P.M., ON MARCH 6, 2014.

QUOTES WILL BE CONSIDERED LATE WHEN THE OFFICIAL PURCHASING TIME CLOCK READS 2:00 P.M.

All quotation information will be available for review after contract award.

Clarifications of specifications is to be directed to: **Shannon W. Kirby, phone (559) 600-7116, e-mail CountyPurchasing@co.fresno.ca.us.**

NOTE THE FOLLOWING AND ATTACHED ADDITIONS, DELETIONS AND/OR CHANGES TO THE REQUIREMENTS OF REQUEST FOR QUOTATION NUMBER: 926-5231 AND INCLUDE THEM IN YOUR RESPONSE. PLEASE SIGN AND RETURN THIS ADDENDUM WITH YOUR QUOTATION.

- **Revised Exhibit 1 - Facility List**
- **Revised Exhibit 2 – Gopher and Squirrel Control Boundaries**
- **Add Exhibit 3 – Device Count for Fresno County**
- **Revised Quotation Summary**

ACKNOWLEDGMENT OF ADDENDUM NUMBER THREE (3) TO RFQ 926-5231

COMPANY NAME: _____
(PRINT)

SIGNATURE: _____

NAME & TITLE: _____
(PRINT)

QUESTIONS AND ANSWERS

Q1. On bid- price on inside work. Is it only monthly? It's not specified on the RFQ.

A1. *RFQ Page 15 –*

"The pest control service includes a combination of inspection, and mitigation efforts in the building interiors and exterior perimeters."

The Quotation Schedule documents the "Minimum Frequency" of visits to each facility.

Q2. Does this include spider web sweeping?

A2. *RFQ Page 15 –*

"The Contractor is to provide, for all buildings included in this RFQ, an environment free from, but not limited to the following pests:

Spiders, including the removal of all spider webs from outside of all buildings"

Q3. Are all county yards the same?

A3. *"They are generally small".*

Q4. It would be helpful to know what existing pest control equipment that may need to be included in service cost. List may include but not limited to rodent exterior bait stations, interior rodent equipment, and or interior fly devices.

A4. *See Exhibit 3.*

Q5. There are several sites where the square footage is not present or is a value of 1. Will those be updated?

A5. *Most of those have been updated. There are still a few road yard sites where the department did not provide square footage estimates. These are small buildings in yards where road equipment is stored.*

Q6. There are duplicate sites on your lists. Line 75 and 76 on Facility list, and line 158 and 159.

A6. *Corrected*

Q7. On page 14 under Default services you ask for environment free from, Lice, mites, bed bugs, fleas They are not standard Pests and normally never covered as Standard Pests, This line should be put under Extra Service's Also Mice, Rats and other rodents. The statement and other rodents is vague. It should read Mice and Rats.

A7. Page 14 of the RFQ

Default Service – All Locations

The Contractor is to provide, for all buildings included in this RFQ, an environment free from, but not limited to, the following pests:

- Spiders, including the removal of all spider webs from outside of all buildings
- Cockroaches and beetles
- Crickets and other hoppers
- Ants (all species), earwigs, sow bugs, silverfish and other crawling insects
- ~~Lice, mites, bed bugs, fleas and other biting insects~~ (moved to Extra Services)
- Flies, moths and other flying insects
- Weevils and other food pests
- Mice and rats (corrected)**

The pest control service includes a combination of inspection, and mitigation efforts in the building interiors and exterior perimeters.

Extra Services - These are considered “extra” unless declared as a standard requested service by a department in the Quotation Schedule:

- Gophers,
- Lice, mites, bed bugs, fleas and other biting insects (moved to Extra Services from Default Services)**
- Squirrels
- Snakes and other reptiles
- Termite inspection and eradication
- Wasps, hornets and other stinging insects nesting in the interior or exterior, up to a maximum height of two (2) stories

Point of clarification:

“Monthly” on the schedule does not mean monthly application of pest control chemicals. Chemicals are utilized only as needed.

Exhibit - 1 Facility List								
Revised 2/18/2014								
Asset No	Asset Name	Department	Lease?	ASSETLOCN	Est. Sq Ft	Contact Person	Phone	E-Mail
Group 1 - Agriculture								
403	Detection Trapping Trailer	Agriculture		4555 E. HAMILTON, FRESNO	720	Brian Cochran	559-600-1906	bcochran@co.fresno.ca.us
404	Agriculture Commissioner	Agriculture		1730 S. MAPLE, FRESNO	6220	Brian Cochran		
406	Ag Warehouse	Agriculture		1730 S. MAPLE, FRESNO	6000	Brian Cochran		
415	Weights and Measures - Calibration Station	Agriculture		4535 E. HAMILTON, FRESNO	6750	Brian Cochran		
417	Weights and Measures - Meter Testing	Agriculture		4535 E. HAMILTON, FRESNO	1472	Brian Cochran		
419	Training Trailer	Agriculture		4535 E. HAMILTON, FRESNO	1620	Brian Cochran		
438	Agriculture Commissioner Annex	Agriculture		1730 S. MAPLE, FRESNO	6200	Brian Cochran		
825	Selma District Office	Agriculture	x	3400 McCall Ave, STE 100, Selma	730	Brian Cochran		
826	Sanger Ag Office - Ag Department	Agriculture	x	1705 O STREET, SANGER	528	Brian Cochran		
897	Huron District Ag Office - Ag	Agriculture	x	17353 OAKLAND AVE, FIVE POINTS	442	Brian Cochran		
Group 2 - Behavioral Health								
317	Main Mental Health - Behavioral Health	Behavioral Health		4441 E. KINGS CANYON, FRESNO	25265	Brandon Hill	600-9187	bhill@co.fresno.ca.us
319	Psychiatric Health Facility - Behavioral Health	Behavioral Health		4411 E. KINGS CANYON, FRESNO	44064	Brandon Hill		
320	Health Facility - Behavioral Health - Paths	Behavioral Health		515 S CEDAR, FRESNO	18589	Brandon Hill		
332	Modular Unit A - Behavioral Health	Behavioral Health		4409 E INYO AVENUE, FRESNO	5040	Brandon Hill		
333	Modular Unit B - Behavioral Health	Behavioral Health		4417 E INYO AVENUE, FRESNO	4979	Brandon Hill		
335	Modular Unit E - Behavioral Health	Behavioral Health		4447 E KINGS CANYON, FRESNO	7100	Brandon Hill		
336	Modular Unit F - DSS	Behavioral Health		4463 E KINGS CANYON, FRESNO	1420	Brandon Hill		
Group 3 - Coroner								
716	Coroners Office-Morgue-Public Admin-Coroners	Coroner		3150 E. JEFFERSON	14330	Rodney Walker	559-600-7268	RAWalker@co.fresno.ca.us
Group 4 - Social Services								
311	Main Welfare - DSS	Department of Social Services		4455 E. KINGS CANYON, FRESNO	33300	Sandy Huerta	559-600-1969	shuerta@co.fresno.ca.us
313	Commissary Building - DSS	Department of Social Services		4449 E. KINGS CANYON, FRESNO	31280	Sandy Huerta		
315	Barton Building - DSS	Department of Social Services		4499 E. KINGS CANYON, FRESNO	28050	Sandy Huerta		
318	Huntington Hall - DSS	Department of Social Services		435 S. BOYD, FRESNO	28350	Sandy Huerta		
326	Modular Building - DSS	Department of Social Services		445 S. CEDAR	1920	Sandy Huerta		
334	Modular Unit C	Department of Social Services		4445 E INYO AVENUE, FRESNO	4268	Sandy Huerta		
340	Intake Building - DSS	Department of Social Services		4468 E. KINGS CANYON, FRESNO	13361	Sandy Huerta		
341	Intake Annex Building - DSS	Department of Social Services		4468 E. KINGS CANYON, FRESNO	1750	Sandy Huerta		
343	Modular Unit D - DSS	Department of Social Services		4452 E KINGS CANYON, FRESNO	6370	Sandy Huerta		
622	DSS Fulton Annex	Department of Social Services	x	1821 FULTON, FRESNO	20560	Sandy Huerta		
628	Airport Office - DSS	Department of Social Services	x	4944 E CLINTON AVE, FRESNO	8000	Sandy Huerta		
834	E Street Department of Social Services	Department of Social Services	x	1219 E STREET, FRESNO	10500	Sandy Huerta		
836	Veteran Services	Department of Social Services	x	3845 N. Clark #103	2137	Sandy Huerta		
864	Crocker Building	Department of Social Services		2135 FRESNO STREET, FRESNO	85803	Sandy Huerta		
870	Coalinga Regional Center - HSS - DSS	Department of Social Services	x	311 COALINGA PLAZA, COALINGA	24000	Sandy Huerta		
884	Child Protective Services - Child & Family Services	Department of Social Services	x	1404 L STREET, FRESNO	28823	Sandy Huerta		
898	Center Mall Court	Department of Social Services	x	2011 FRESNO ST, FRESNO	36644	Sandy Huerta		
Group 5 - Fleet Services								
420	Office & Parts - GSA - Fleet Services	Fleet Services		4551 E. HAMILTON, FRESNO	7498	Allen Moore	559-600-7511	amoores@co.fresno.ca.us
421	Truck & Tractor Shop - GSA - Fleet Services	Fleet Services		4551 E. HAMILTON, FRESNO	19032	Allen Moore		
422	Automobile Repair Shop - GSA - Fleet Services	Fleet Services		4551 E. HAMILTON, FRESNO	12922	Allen Moore		
423	Service Station - GSA - Fleet Services	Fleet Services		4551 E. HAMILTON, FRESNO	80	Allen Moore		
424	Welding Shop - GSA - Fleet Services	Fleet Services		4551 E. HAMILTON, FRESNO	6300	Allen Moore		
434	Fleet Services - Storage	Fleet Services		4551 E. HAMILTON, FRESNO	3125	Allen Moore		
Group 6 - Graphic Communications								
621	Graphic Communication - GS	Graphic Communication Services		844 VAN NESS AVENUE, FRESNO	11250	Richard Rose	559-600-3175	rrose@co.fresno.ca.us
Group 7 - ISD								
509	ITSD - Information Tech Services	Information Technology Services		1020 S. 10TH STREET, FRESNO	20872	Rick Colen	559-600-5802	rcolen@co.fresno.ca.us

Asset No	Asset Name	Department	Lease?	ASSETLOCN	Est. Sq Ft	Contact Person	Phone	E-Mail
511	Emergency Generator Building - Computer Services	Information Technology Services		1020 S. 10TH STREET, FRESNO	300	Rick Colen		
648	ITSD - Fine	Information Technology Services	x	2048 N. FINE, FRESNO	19000	Rick Colen		
Group 8 - ISD - Radio								
154	Meadow Lakes	ITSD Radio		42480 RADIO LANE, MEADOW LAKES	262	Jim Wickham	559-600-5883	jwickham@co.fresno.ca.us
426	Manager's Office	ITSD Radio		4551 E. HAMILTON, FRESNO	468	Jim Wickham		
427	Service Dispatch	ITSD Radio		4551 E. HAMILTON, FRESNO	120	Jim Wickham		
431	Radio Tower	ITSD Radio		4551 E. HAMILTON, FRESNO	400	Jim Wickham		
433	Radio Shop Communications	ITSD Radio		4551 E. HAMILTON, FRESNO	4494	Jim Wickham		
829	Bear Mountain Radio Site	ITSD Radio	x	30787 BEAR MOUNTAIN RD	14300	Jim Wickham		
829	Radio Facility Bear Mountain	ITSD Radio	x	30787 BEAR MOUNTAIN RD	14300	Jim Wickham		
831	Musick Peak Radio Facility	ITSD Radio	x	SHAVER LAKE, SHAVER	25	Jim Wickham		
895	North Central Fire Station	ITSD Radio	x	15850 W KEARNEY, KERMAN	100	Jim Wickham		
9952	Joaquin Ridge	ITSD Radio	x	GPS 36-18-16.8 N 120-24-11.5 W	19	Jim Wickham		
9957	Radio Tower Lease	ITSD Radio	x	740 W NORTH, REEDLEY	200	Jim Wickham		
9975	Joaquin Ridge Radio Site	ITSD Radio	x	JOAQUIN RDG	19	Jim Wickham		
Group 9 - Libraries								
657	West Fresno Library	Library - Measure B	x	188 E CALIFORNIA AVE	8431	Gabriel Mata	559-600-6279	Gabriel.Mata@co.fresno.ca.us
800	Central Library	Library - Measure B		2420 MARIPOSA, FRESNO	82716	Gabriel Mata		
802	Woodward Park Branch - Library	Library - Measure B		944 E PERRIN AVE, FRESNO	22200	Gabriel Mata		
803	Sanger Branch - Library	Library - Measure B		1812 SEVENTH STREET, SANGER	8994	Gabriel Mata		
804	Selma Branch - Library	Library - Measure B		2200 SELMA STREET, SELMA	7272	Gabriel Mata		
805	Easton Branch - Library	Library - Measure B		25 E. FANTZ, EASTON	3120	Gabriel Mata		
806	San Joaquin Branch - Library	Library - Measure B		8781 MAIN STREET, SAN JOAQUIN	2996	Gabriel Mata		
807	Firebaugh Branch - Library	Library - Measure B		1315 O STREET, FIREBAUGH	1581	Gabriel Mata		
808	Parlier Branch - Library	Library - Measure B		1130 E PARLIER, PARLIER	3778	Gabriel Mata		
809	Bear Mountain Branch - Library	Library - Measure B		30733 E KINGS CANYON, SQUAW VALLEY	7150	Gabriel Mata		
810	Riverdale Branch - Library	Library - Measure B	x	20975 S MALSARY, RIVERDALE	2190	Gabriel Mata		
811	Reedley Branch - Library	Library - Measure B	x	1027 E STREET, REEDLEY	5000	Gabriel Mata		
812	Orange Cove Branch - Library	Library - Measure B		815 Park Blvd., ORANGE COVE	10072	Gabriel Mata		
813	Kingsburg Branch - Library	Library - Measure B	x	1399 DRAPER, KINGSBURG	4550	Gabriel Mata		
814	Fowler Branch - Library	Library - Measure B	x	306 S. 7th Street, FOWLER	8660	Gabriel Mata		
815	Laton Branch - Library	Library - Measure B	x	6313 DeWOODY, LATON	1563	Gabriel Mata		
817	Cedar-Clinton Branch - Library	Library - Measure B	x	4150 E CLINTON, FRESNO	7500	Gabriel Mata		
819	Politi Branch - Library	Library - Measure B	x	5771 N FIRST, FRESNO	5000	Gabriel Mata		
820	Fig Garden Branch - Library	Library - Measure B	x	3071 W BULLARD, FRESNO	10218	Gabriel Mata		
821	Sunnyside Branch - Library	Library - Measure B	x	5566 E KINGS CANYON, FRESNO	18033	Gabriel Mata		
822	Gillis Branch - Library	Library - Measure B	x	629 W DAKOTA, FRESNO	6263	Gabriel Mata		
824	Mendota Branch Library	Library - Measure B	x	1246 Belmont, MENDOTA	12575	Gabriel Mata		
876	Auberry Branch - Library	Library - Measure B	x	33049 AUBERRY ROAD, AUBERRY	5024	Gabriel Mata		
878	Shaver Lake Branch - Library	Library - Measure B	x	41344 TOLLHOUSE ROAD, SHAVER LAKE	1000	Gabriel Mata		
879	Piedra Branch - Library	Library - Measure B	x	25385 TRIMMER SPRINGS ROAD,PIEDRA	1800	Gabriel Mata		
880	Big Creek Branch - Library	Library - Measure B	x	55190 POINT ROAD, BIG CREEK	375	Gabriel Mata		
887	Tranquillity Branch - Library	Library - Measure B	x	25561 Williams, TRANQUILLITY	3484	Gabriel Mata		
889	Kerman Branch - Library	Library - Measure B	x	15081 WEST KEARNEY PLAZA, KERMAN	4370	Gabriel Mata		
899	Caruthers Branch - Library	Library - Measure B	x	13382 S HENDERSON AVE, CARUTHERS	13382	Gabriel Mata		
Group 10 - Probation								
514	Domestic Violence	Probation		748 S. 10TH STREET, FRESNO	2890	Gerald Shiebelhut	559-600-5092	GSchiebelhut@co.fresno.ca.us
515	Adult Administration	Probation		890 S. 10TH STREET, FRESNO	19032	Gerald Shiebelhut		
704	JJC Commitment Administration 1	Probation		3333 E. AMERICAN AVENUE, FRESNO	23098	Gerald Shiebelhut		
705	JJC Court Schools	Probation		3333 E. AMERICAN AVENUE, FRESNO	34536	Gerald Shiebelhut		
706	JJC Commitment Housing	Probation		3333 E. AMERICAN AVENUE, FRESNO	562	Gerald Shiebelhut		
707	JJC Commitment Housing	Probation		3333 E. AMERICAN AVENUE, FRESNO	14628	Gerald Shiebelhut		
709	Commitment Housing	Probation		3333 E. AMERICAN AVENUE, FRESNO	21918	Gerald Shiebelhut		
709	Commitment Housing	Probation		3333 E. AMERICAN AVENUE, FRESNO	180	Gerald Shiebelhut		
Group 11 - PW - American Avenue								
446	Kerman Maintenance & Operations Building - Public Works - Resources	Public Works - American Avenue		18950 W. AMERICAN, KERMAN	2990	John Thompson	559-600-4313	jothompson@co.fresno.ca.us
447	Kerman Self-Hauler Recycling - Public Works - Resources	Public Works - American Avenue		18950 W. AMERICAN, KERMAN	18900	John Thompson		

Asset No	Asset Name	Department	Lease?	ASSETLOCN	Est. Sq Ft	Contact Person	Phone	E-Mail
449	Mobile Trailers - Public Works - Construction	Public Works - American Avenue		18950 W. AMERICAN, KERMAN	500	John Thompson		
494	Equipment Building - Public Works - Resources	Public Works - American Avenue		18950 W. AMERICAN, KERMAN	100	John Thompson		
495	Chem - American Avenue Disposal	Public Works - American Avenue		18950 W. AMERICAN, KERMAN	7740	John Thompson		
496	Weigh Station - Public Works - Resources	Public Works - American Avenue		18950 W. AMERICAN, KERMAN	720	John Thompson		
Group 12 - PW - Parks								
200	Kearney Park	Public Works - Parks	x	6725 W. KEARNEY BLVD., FRESNO	2400	John Thompson		
201	Kearney Park - Employee Day Room & Storage	Public Works - Parks		6725 W. KEARNEY BLVD., FRESNO	1200	John Thompson		
202	Kearney Park - Carpenter Shop - Public Works - Parks	Public Works - Parks		6725 W. KEARNEY BLVD., FRESNO	1200	John Thompson		
203	Kearney Park - Welding Shop - Public Works - Parks	Public Works - Parks		6725 W. KEARNEY BLVD., FRESNO	2200	John Thompson		
204	Kearney Park - Lath House	Public Works - Parks		6725 W. KEARNEY BLVD., FRESNO	1800	John Thompson		
205	Storage Building #1 - Public Works - Parks	Public Works - Parks		6725 W. KEARNEY BLVD., FRESNO	2400	John Thompson		
206	Storage Building #2 - Public Works - Parks	Public Works - Parks		6725 W. KEARNEY BLVD., FRESNO	2400	John Thompson		
210	Storage Building #6 - Parks & Recreation	Public Works - Parks		6725 W. KEARNEY BLVD., FRESNO	660	John Thompson		
229	Kearney Warehouse - Public Works - Parks	Public Works - Parks		6725 W. KEARNEY BLVD., FRESNO	5160	John Thompson		
915	Liberty Cemetery - Parks	Public Works - Parks		1831 W BELMONT, FRESNO	800	John Thompson		
916	Liberty Cemetery Warehouse - Parks	Public Works - Parks		1831 W BELMONT, FRESNO	800	John Thompson		
923	Avocado Warehouse 2 - Parks	Public Works - Parks		3625 N PIEDRA RD, PIEDRA	1592	John Thompson		
925	Avocado Restroom - Parks	Public Works - Parks		3625 N PIEDRA RD, PIEDRA	384	John Thompson		
983	Skaggs Ticket Booth - Parks	Public Works - Parks		5901 N MADERA AVE, KERMAN	25	John Thompson		
Group 13 - PW - Special Districts								
710	JJC Water Treatment Plant	Public Works - Special Districts		3333 E. AMERICAN AVENUE, FRESNO	2016	John Thompson		
711	JJC Wastewater Treatment Plant	Public Works - Special Districts		3333 E. AMERICAN AVENUE, FRESNO	2000	John Thompson		
Group 14 - PW Roads								
409	Traffic Sign Shop - Public Works - Roads	Public Works and Planning - Roads		4551 E. HAMILTON, FRESNO	1175	Bob Palacios	559-600-4267	RPalacios@co.fresno.ca.us
410	Traffic Sign Shop - Public Works - Roads	Public Works and Planning - Roads		4551 E. HAMILTON, FRESNO	1764	Bob Palacios		
411	Traffic Sign Shop - Public Works - Roads	Public Works and Planning - Roads		4551 E. HAMILTON, FRESNO	1175	Bob Palacios		
412	Traffic Sign Shop - Public Works - Roads	Public Works and Planning - Roads		4551 E. HAMILTON, FRESNO	1175	Bob Palacios		
451	Area 1 Equipment Shed	Public Works and Planning - Roads		38835 W. NEES, FIREBAUGH	3500	Bob Palacios		
452	Area 1 Equipment Building & Office - Public Works - Roads	Public Works and Planning - Roads		38835 W. NEES AVE., FIREBAUGH	5270	Bob Palacios		
453	Area 1 Pump Shed - Public Works - Roads	Public Works and Planning - Roads		38835 W. NEES AVE., FIREBAUGH	1	Bob Palacios		
455	Area 2 Office & Storage - Public Works - Roads	Public Works and Planning - Roads		25411 W. SILVERIA AVE., TRANQUILLITY	1276	Bob Palacios		
456	Area 2 Equipment Building - Public Works - roads	Public Works and Planning - Roads		25411 W. SILVERIA AVE., TRANQUILLITY	450	Bob Palacios		
457	Area 2 Fuel Shed - Public Works - Roads	Public Works and Planning - Roads		25411 W. SILVERIA AVE., TRANQUILLITY	4620	Bob Palacios		
460	Area 3 Office & Storage - Public Works - Roads	Public Works and Planning - Roads		779 E. POLK AVE., COALINGA	800	Bob Palacios		
461	Area 3 Equipment Shed - Public Works - Roads	Public Works and Planning - Roads		779 E. POLK AVE., COALINGA	6125	Bob Palacios		
463	Area 4 Office & Storage Building - Public Works - Roads	Public Works and Planning - Roads		12855 W. G STREET, BIOLA	516	Bob Palacios		
464	Area 4 Equipment Shed - Public Works - Roads	Public Works and Planning - Roads		12855 W. G STREET, BIOLA	7290	Bob Palacios		
465	Area 4 Fuel Shed - Public Works - Roads	Public Works and Planning - Roads		12855 W. G STREET, BIOLA	144	Bob Palacios		
466	Area 4 Restroom - Public Works - Roads	Public Works and Planning - Roads		12855 W. G STREET, BIOLA	258	Bob Palacios		
469	Area 5&6 - Office - Storage - Public Works - Roads	Public Works and Planning - Roads		2544 W. MT. VIEW, CARUTHERS	6230	Bob Palacios		
470	Area 5&6 Fuel Shed & Equipment - Public Works - Roads	Public Works and Planning - Roads		2544 W. Mt. VIEW, CARUTHERS	9599	Bob Palacios		
471	Area 5&6 - Workshop - Public Works - Roads	Public Works and Planning - Roads		2544 W. Mt. VIEW, CARUTHERS	2835	Bob Palacios		
473	Area 7 - Office & Equipment Building - Public Works - Roads	Public Works and Planning - Roads		9400 MATUS, CLOVIS	7000	Bob Palacios		
474	Area 7 - Fuel Shed - Public Works - Roads	Public Works and Planning - Roads		9400 MATUS, CLOVIS	90	Bob Palacios		
475	Area 8 - Office & Equipment Building - Public Works - Roads	Public Works and Planning - Roads		9525 E. OLIVE AVE., SANGER	6562	Bob Palacios		
476	Area 8 - Fuel Shed - Public Works - Roads	Public Works and Planning - Roads		9525 E. OLIVE AVE., SANGER	130	Bob Palacios		
477	Area 9 - Residence - Public Works - Roads	Public Works and Planning - Roads		3633 S. DEL REY AVE., SANGER	1	Bob Palacios		
478	Area 9 - Office - Public Works - Roads	Public Works and Planning - Roads		3633 S. DEL REY AVE., SANGER	714	Bob Palacios		
479	Area 9 - Equipment Building - Public Works - Roads	Public Works and Planning - Roads		3633 S. DEL REY AVE., SANGER	5712	Bob Palacios		
480	Area 9 - Fuel Shed - Public Works - Roads	Public Works and Planning - Roads		3633 S. DEL REY AVE., SANGER	96	Bob Palacios		
484	Dunlap Storage Shed - Public Works - Roads	Public Works and Planning - Roads		40315 DUNLAP ROAD, DUNLAP	1848	Bob Palacios		
485	Dunlap Restroom - Public Works - Roads	Public Works and Planning - Roads		40315 DUNLAP ROAD, DUNLAP	77	Bob Palacios		
486	Area 11 - Office & Shop - Public Works - Roads	Public Works and Planning - Roads		33148 AUBERRY ROAD, AUBERRY	3498	Bob Palacios		
487	Area 11 - Equipment Shed - Public Works - Roads	Public Works and Planning - Roads		33148 AUBERRY ROAD, AUBERRY	3000	Bob Palacios		
488	Area 11 - Fuel Shed - Public Works - Roads	Public Works and Planning - Roads		33148 AUBERRY ROAD, AUBERRY	96	Bob Palacios		
489	Area 11 - Storage Dock - Public Works - Roads	Public Works and Planning - Roads		33148 AUBERRY ROAD, AUBERRY	1	Bob Palacios		
490	Area 11 - Shed & Storage - Public Works - Roads	Public Works and Planning - Roads		33148 AUBERRY ROAD, AUBERRY	1840	Bob Palacios		

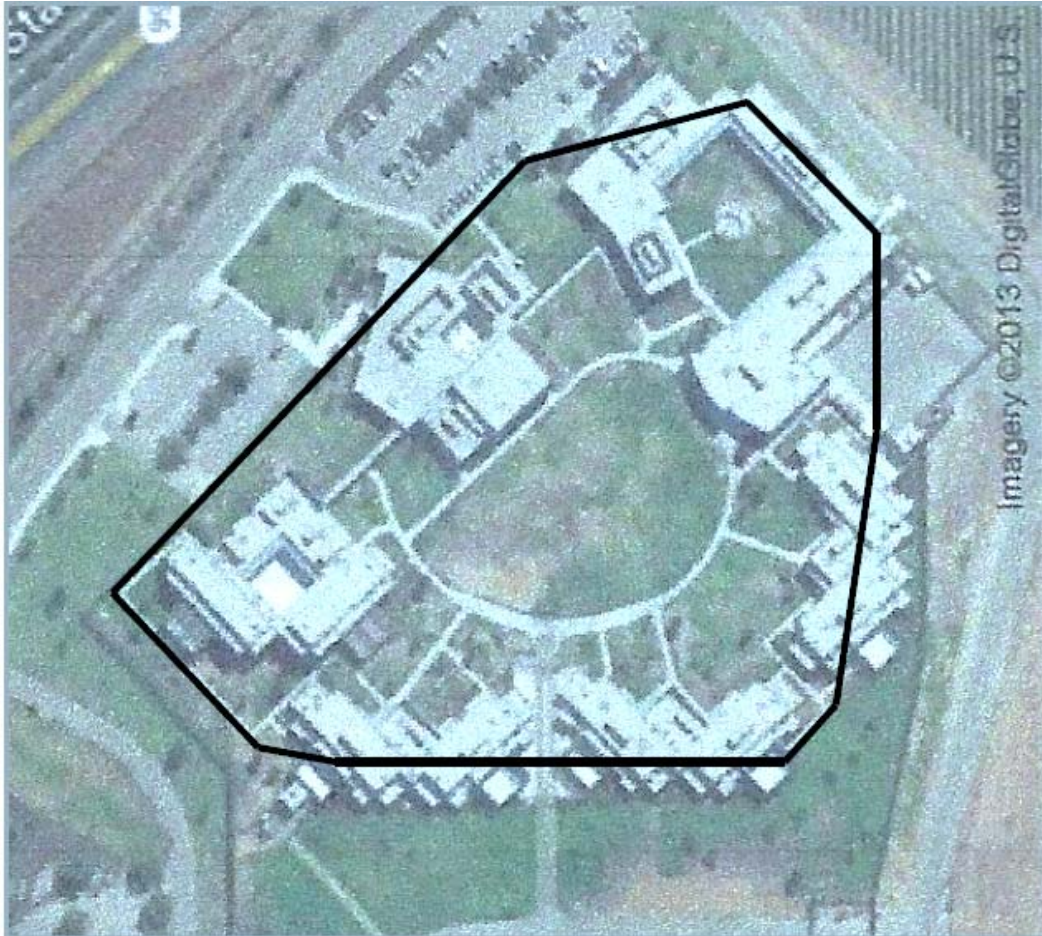
Asset No	Asset Name	Department	Lease?	ASSETLOCN	Est. Sq Ft	Contact Person	Phone	E-Mail
492	Area 11 - Office & Equipment Building - Public Works - Roads	Public Works and Planning - Roads	x	41686 Dinkey Creek Rd.	1	Bob Palacios		
Group 15 - Sheriff								
150	Sheriff 's Telen Substation	Sheriff		30691 E. KINGS CANYON RD, SQUAW VALLEY	2155	Toune Syharath/Ron Wallace		
155	Auberry Sheriff Substation	Sheriff		33155 AUBERRY ROAD, AUBERRY, CA.	1241	Toune Syharath/Ron Wallace		
426	Alternate Dispatch - Sheriff	Sheriff		4551 E. HAMILTON, FRESNO	468	Jan Stevens/Ron Wallace		
604	Sheriff's Administration Building	Sheriff		2200 FRESNO STREET, FRESNO	64613	Jan Stevens/Ron Wallace		
605	South Annex Jail	SHARED (Sheriff and Public Health)		2204 FRESNO STREET, FRESNO	91962	Sgt. Javier Vital		
607	Main Jail	SHARED (Sheriff and Public Health)		1225 M STREET, FRESNO	220167	Sgt. Javier Vital		
608	North Annex Jail	SHARED (Sheriff and Public Health)		1265 M STREET, FRESNO	195661	Sgt. Javier Vital		
619	Satellite Jail	Sheriff		110 M STREET, FRESNO	72066	Ron Wallace/Toune Syharath		
631	Sheriff's Forensic Lab	Sheriff	x	1256 DIVISADERO, FRESNO	10800	Jan Stevens/Ron Wallace		
651	Sheriff Mendota Office	Sheriff		101 STRAW, MENDOTA	1064	Toune Syharath/Ron Wallace		
652	Air Support Unit - Sheriff	Sheriff	x	5029 ANDERSON AVE, FRESNO	6750	Jan Stevens/Ron Wallace		
858	Area 3 Sheriff Substation	Sheriff	x	1055 GOLDEN STATE BLVD, SELMA	9770	Lieutenant Greg Gularte #1009, Area 3 Commander /Toune Syharath		
858a	Sheriff Boating Unit (86100A)	Sheriff		1053 South Golden State, Selma, CA 93626	4198	Toune Syharath/Ron Wallace		
858b	Ag Task Force - Sheriff Area 3 Substation	Sheriff		1057 Golden State Blvd. Selma, CA 93626	802	Lieutenant Greg Gularte #1009, Area 3 Commander /Toune Syharath		
859	Orange Cove Substation - Sheriff	Sheriff		550 Center Street, Orange Cove	8000	Toune Syharath/Ron Wallace		
891	Area 2 Sheriff Substation	Sheriff	x	5717 E SHIELDS, CLOVIS	8480	Toune Syharath/Ron Wallace		
893	Area 1 San Joaquin Sheriff Substation	Sheriff		21925 W MANNING, SAN JOAQUIN	4900	Toune Syharath/Ron Wallace		
896	Helicopter Headquarters - Sheriff	Sheriff	x	5029 ANDERSON AVE, FRESNO	3016	Jan Stevens/Ron Wallace		
1869	Sheriff's SID - Sheriff	Sheriff	x	2590 N. Grove Industrial Dr., FRESNO	10933	Jan Stevens/Ron Wallace		
9953	Sheriff Cottage - Sheriff	Sheriff	x	HUNTINGTON LAKE	900	Toune Syharath/Ron Wallace		
						see below		
						Wallace, Ron	559-600-8582	ronald.wallace@fresnosheriff.org
						Toune Syharath	559-600-8596	toune.syharath@fresnosheriff.org
						Jan Stevens	559-600-8579	janice.stevens@fresnosheriff.org
						Lt. Greg Gularte	559-896-4954	greg.gularte@fresnosheriff.org
						Sgt. Javier Vital	559-500-8534	javier.vital@fresnosheriff.org
Group 16 - Shared								
308	UMC Laundry - DSS	SHARED (DSS and Facility Services)		445 S. CEDAR, FRESNO	6197	Sandy Huerta	559-600-1969	shuerta@co.fresno.ca.us
348	Facility Services	Facility Services		4590 E. KINGS CANYON, FRESNO	23460	Denise Redmond	559-600-7242	DRedmond@co.fresno.ca.us
349	Carpenter Shop - Building Maintenance	Facility Services		4590 E. KINGS CANYON, FRESNO	7636	Denise Redmond	559-600-7242	DRedmond@co.fresno.ca.us
437	Purchasing - Warehouse - Elections	SHARED (Purchasing, County Clerk-Elections)		4525 E. HAMILTON, FRESNO	8076	Gary Cornuelle	559-600-7114	gcornuelle@co.fresno.ca.us
603	Hall of Records	SHARED (CAO, Auditor, Controller, Tax Collector, Assessor)		2281 TULARE STREET, FRESNO	81334	Denise Redmond	559-600-7242	DRedmond@co.fresno.ca.us
611	Brix Building - Community Health	SHARED (Public Health and DSS)		1221 FULTON MALL, FRESNO	81274	Emma Mejia	559- 600-6409	emmejia@co.fresno.ca.us
612	Mercer Building - Community Health	DPH and DSS (785 sf)		1221 FULTON MALL, FRESNO	59726	Emma Mejia	559-600-6409	emmejia@co.fresno.ca.us
610	Fresno County Plaza	SHARED (Public Works, Child Support, Probation, Personnel, County Clerk-Elections, Vacant Bldg)		2220 TULARE, FRESNO	259878	Denise Redmond	559-600-7242	DRedmond@co.fresno.ca.us
712	JJC Central Plant/Warehouse	SHARED (Facility Services, Probation)		3333 E. AMERICAN AVENUE, FRESNO	17916	Rodney Walker	559-600-7268	RAWalker@co.fresno.ca.us
702	JJC Admin; Finance Office, Automation, Booking	SHARED (Probation, Coroner, Behavioral Health, Public Health, Vacant Bldg)		3333 E. AMERICAN AVENUE, FRESNO	34369	Gerald Shiebelhut	559-600-5092	GSchiebelhut@co.fresno.ca.us
701	JJC Courthouse - Probation, DA, PD	SHARED (Probation, DA, Public Defender)		3333 E. AMERICAN AVENUE, FRESNO	121008	Gerald Shiebelhut	559-600-5092	GSchiebelhut@co.fresno.ca.us
703	Detention Administration	SHARED (Probation, Public Health, Behavioral Health)		3333 E. AMERICAN AVENUE, FRESNO	126462	Gerald Shiebelhut	559-600-5092	GSchiebelhut@co.fresno.ca.us
708	JJC Commitment Housing	SHARED (Probation, Public Health, Behavioral Health)		3333 E. AMERICAN AVENUE, FRESNO	15190	Gerald Shiebelhut	559-600-5092	GSchiebelhut@co.fresno.ca.us
882	Selma Regional Center - DSS	SHARED (Behavioral Health, Child Support Services)	x	3800 McCALL & DINUBA, SELMA	34477	Sandy Huerta	559-600-1969	shuerta@co.fresno.ca.us

EXHIBIT 2 – REVISED 2/4/2014

Juvenile Justice Center

All personnel working within the institution must pass background checks prior to beginning work.

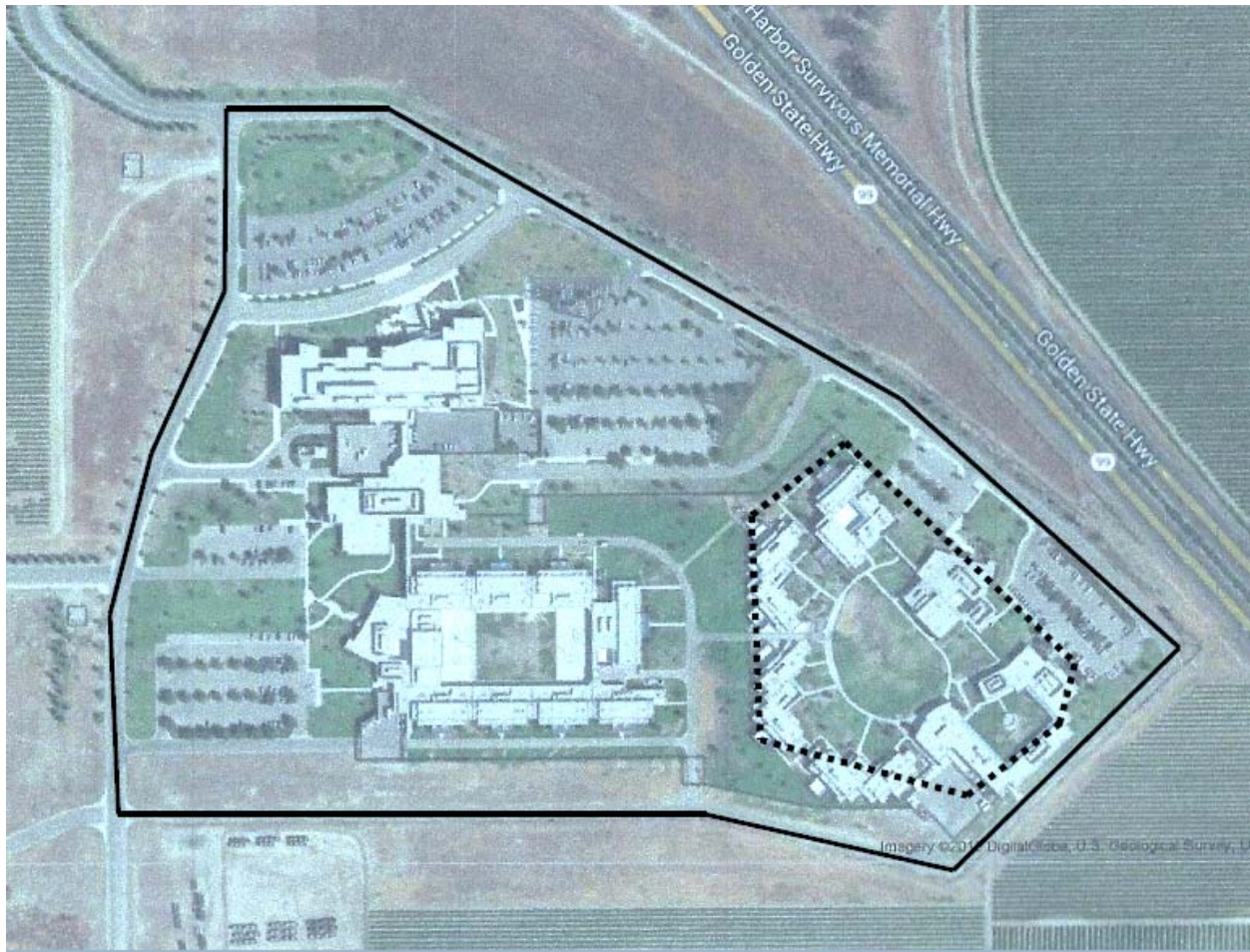
Gopher Control



Gopher Control

1. Quote the cost of initial gopher removal and **annual** maintenance of gopher control inside the black line. This is **not** to include flower bed areas behind the residential pods.
2. Include with your quote:
 - The initial method of control you would employ and any restrictions on access to treated areas
 - Maintenance method, schedule, and restrictions on access, and
 - MSDS sheets
3. Establishing a line of defense for on-going gopher control is challenging. The front lawn area has been included to reduce the possibility of gophers re-entering by tunneling under the walls. Buildings and paving should reduce access from outside the facility in most areas.

Squirrel Control



Squirrel Control Boundaries - 2/4/2014

On the Quotation Schedule, provide quotes for initial and annual maintenance of squirrel control for the following two areas:

1. The JJC Commitment facility only (inside the dotted line)
2. The JJC Campus (inside the solid line).

For both **Gopher** and **Squirrel** mitigation, describe how your mitigation efforts may impact minors' access to treated areas and how long such restriction would be required.

Any questions regarding this exhibit should be directed to Janet Stutzman at 559 600-1245.

EXHIBIT 3

**Device count for Fresno County
Provided by Current Pest Control Vendor
2/5/2014**

Location's	Device	Qty
Fresno #4/ Yard area #4 12855 W. "G" Street. Fresno, CA.	Exterior Rodent Bait Station	2
Fresno #6 / Fig Garden Branch 3071 W. Bullard Avenue Fresno, CA	Multi Catch Device	1
Fresno #4/ Waste Disposal Site 18950 W. American Avenue Fresno, CA	Exterior Rodent Bait Station Automatic Timed Aerosol Flying Insect Device	9 3
Fresno #4/ Yard area #2 18950 W American Avenue Kerman, CA	Interior Monitors (Rodent)	8
Fresno #4/ Yard area #7 9400 N Matus Drive Fresno, CA	Exterior Rodent Bait Station	1
Fresno#4/ Yard area #11 Shaver 41686 Dinkey Creek Road Fresno, CA	Exterior Rodent Bait Station	2
Fresno #2/ Juvenile Campus 3333 E American Avenue Fresno, CA	Exterior Rodent Bait Station Exterior Squirrel Bait Station	85 27
Fresno #12 / Employment Retirement 1111 "H" Street Fresno, CA	Interior Monitors (Rodent)	8
Fresno #14/ Selma Regional Center 3800 McCall Avenue Fresno, CA	Interior Monitors (Rodent)	8
Fresno #4/ Yard Dunlap 40315 Dunlap Dunlap, CA	Exterior Squirrel Bait Station	3
Fresno #2/ Elections 2221 Kern Street Fresno, CA	Interior Multi Catch Device	3

926-5231
REVISED QUOTATION SUMMARY